

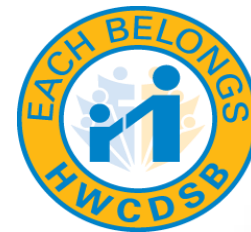
PARENT/GUARDIAN INFORMATION NIGHT

School Entry Process for Students with Special Needs

**HAMILTON-WENTWORTH
CATHOLIC DISTRICT SCHOOL BOARD**
January 25, 2023



Hamilton-Wentworth Catholic District School Board
Believing. Achieving. Serving



Prayer

Lord, we ask your blessing on those gathered here today.

As our children prepare to begin school,

May confidence be their foundation,

May grace be their guide and

May hope be their compass toward a bright future.

May they face each day knowing God is with them.

May tonight be a time to listen, support and encourage
each other in joyful anticipation of new opportunities.

We ask for God's guidance on our journey,

That we may work together to serve God and one another.

We ask this through Christ our Lord.

Amen

Parent Information Night Agenda

- **Welcome and Prayer:** T. Ferrie, Superintendent of Education
- **Agenda:** J. Curto, Project Lead for Special Education Services
- **Each Belongs Philosophy** J. Curto, Project Lead for Special Education Services
- **Video - A Parent's Perspective to School Entry**
- **Welcome to Kindergarten**
- **Transition Process:**
 - Registration Process
 - School Intake Meeting
 - Information Shared
- **Services**
 - Community Communication Support Services
 - Home and Care Support Services (formerly the LHIN)
 - School-Based Rehabilitation Services, Ron Joyce Children's Health Centre
- **Before and After School Program, Hamilton-Wentworth Catholic Child Care Centres**
- **Welcoming Children with Special Needs to the Sacraments, The Roman Catholic Diocese of Hamilton**
- **Ontario Autism Program**
- **Autism Ontario**
- **Frequently Asked Questions**
- **Question and Answer Session**
 - *Please type any general questions into the chat box*
 - *Any specific questions regarding your child should be directed to your home school*

Each Belongs

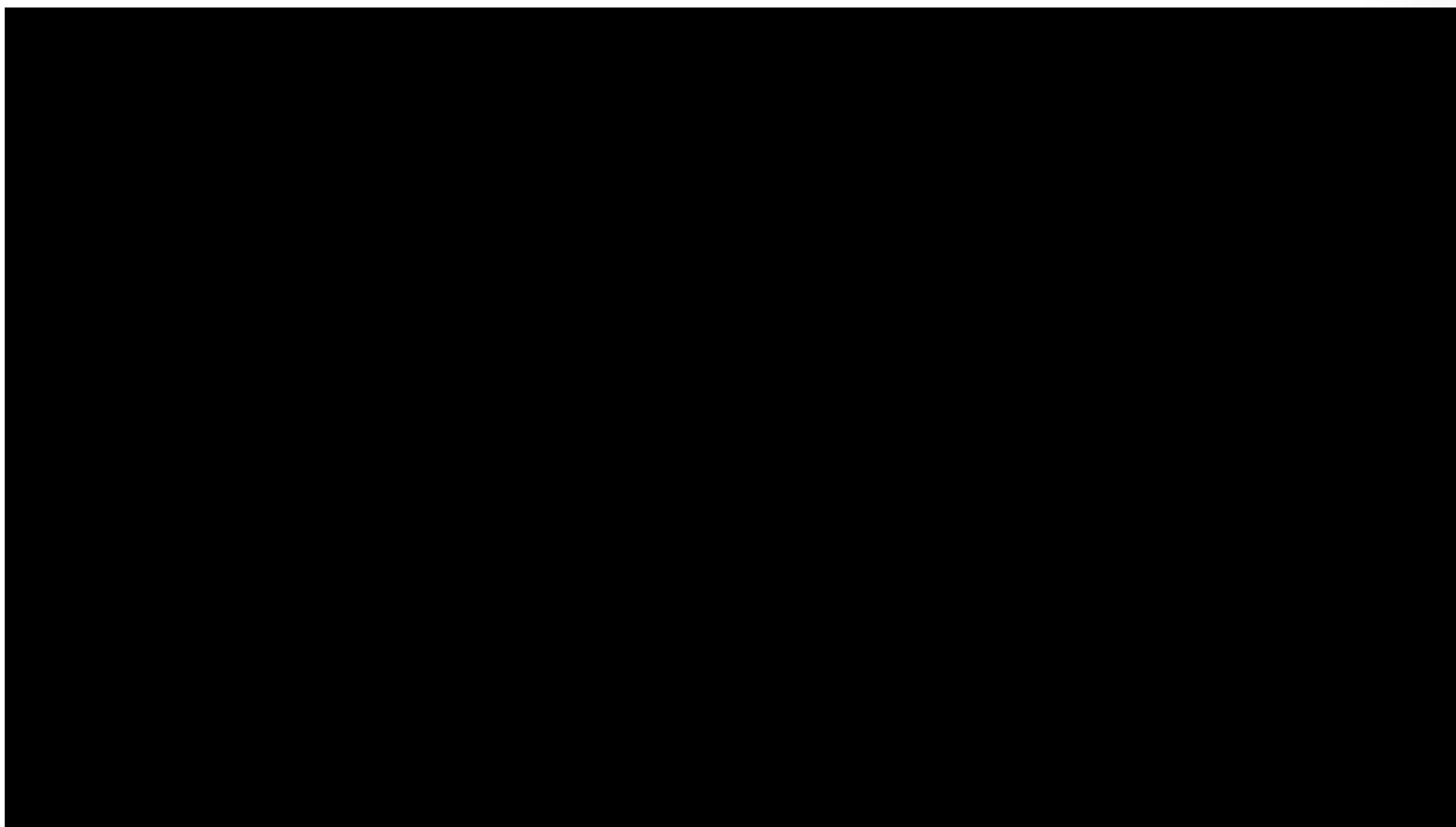
The Philosophy of the Hamilton-Wentworth Catholic District School Board is to **meet the needs of all children** and to develop the fullness of humanity in a Catholic Community.

All students, **regardless of special talents or challenging needs can grow and they can grow best by attending their neighbourhood schools, along with their brothers and sisters.**

Every child with challenging needs requires a **sense of belonging**; every child needs reasonable and realistic success and every child requires concern for his or her dignity as a person.

Exceptional pupils share with their fellow pupils the responsibility to demonstrate acceptable behaviour and to strive for total growth and development.





Welcome to Kindergarten



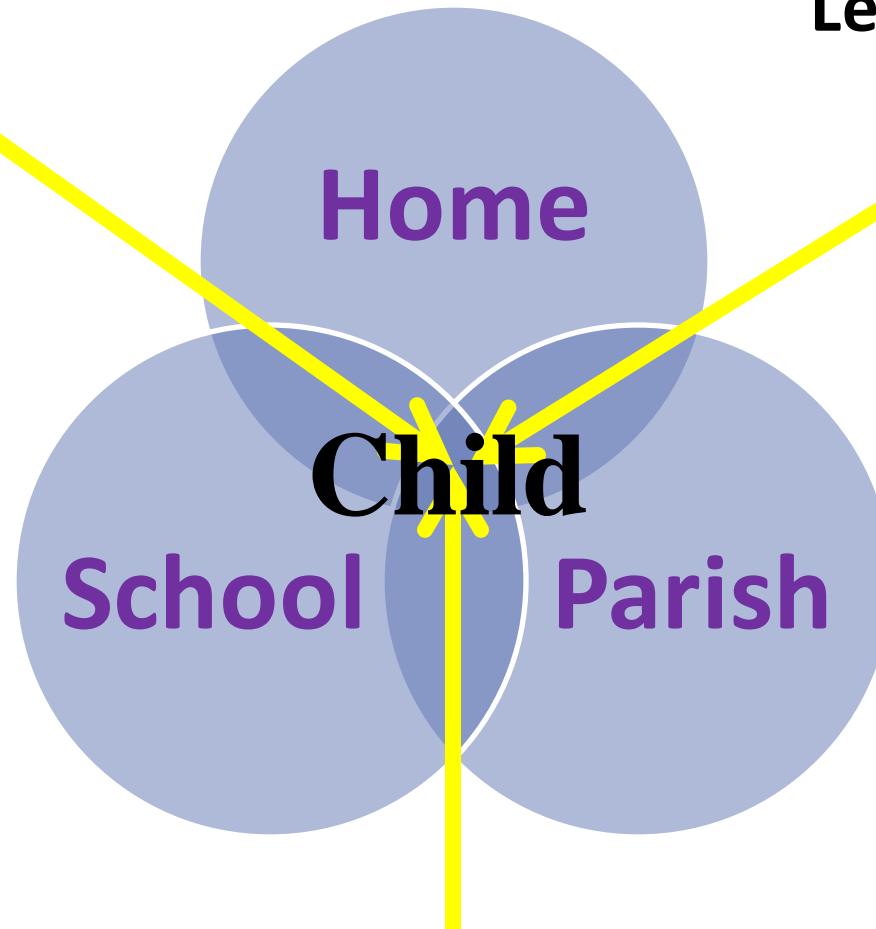
Hamilton-Wentworth Catholic District School Board
Believing, Achieving, Serving

Natalie Crisante
Early Years Co- Lead/K-3 Student Achievement
Consultant



**Ground in Catholic
Faith**

**Inquiry-Based
Learning**



Differentiation: Learning For All





A Time To Grow





For Information visit:

www.hwcdsb.ca/learn/kindergarten/



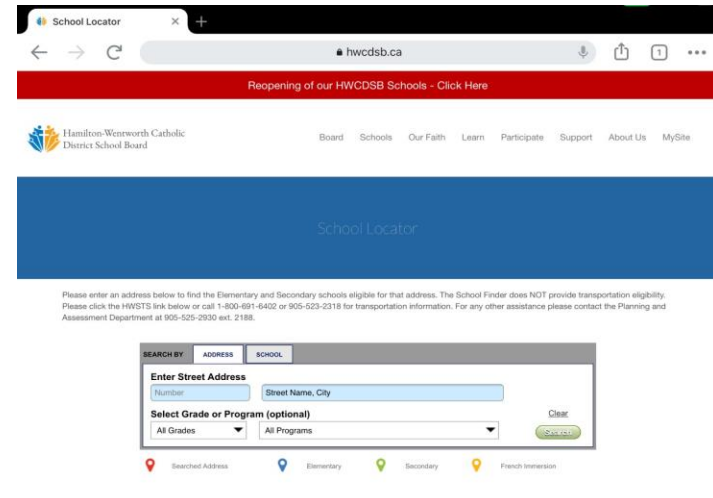
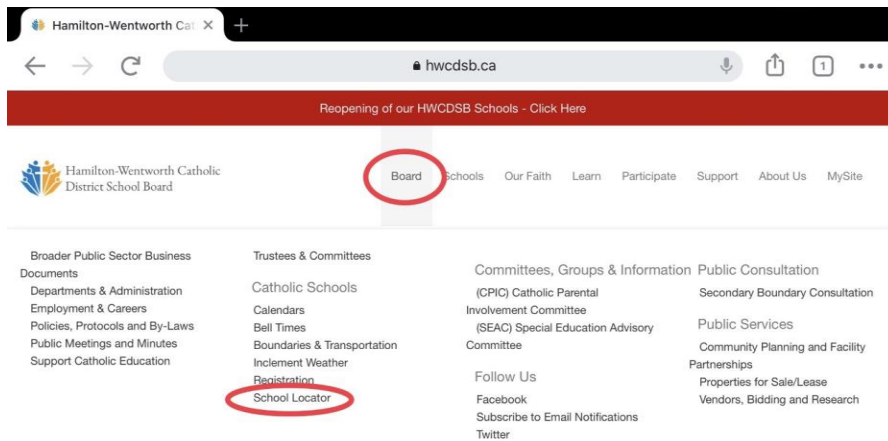
What to expect...

- **February:** Online Registration
- **Spring:** The school will notify you of the 'Welcome To Kindergarten' night
- **September:** School begins



Locating Your Child's Home School

- Determine your **home school**:
 - Visit www.hwcdsb.ca
 - Choose: Board ➔ School Locator
 - Enter address



Child Information

Tell Us About Your Child form due:
Tuesday, February 1, 2023

Follow instructions outlined on "*Getting Ready for Your Child to Start School*" parent letter

- Option #1 – submit forms online
- Option #2 – submit forms through regular post mail



Submitting Information: Online Process

Navigate To: <https://www.hwcdsb.ca/> => Support => Special Education



Board Schools Our Faith Learn Participate **Support** About Us MySite

HWCDSD Parent
Website

COVID-19
Advisory

COVID-19 Vaccination
Attestation Summary

Screening:
Students

Screening:
Contractors/Visitors

Frequent School
Vaccination A

- Active Transportation
- Anonymous Bullying Reporting Tool
- Child & Youth Health
- Child & Youth Mental Health
- Child Care & Development
- Special Education**

Catholic Schools & Principals
Catholic School Council

Public Services
Community Use of Schools

Accessibility
AODA Feedback
Health & Wellness

Have you screened today?

[Learn More](#)



Submitting Information: Online Process

Navigate To: <https://www.hwcdsb.ca/> => Support => Special Education

Students with Special Education Needs Entering School For The First Time

Welcome to school! Starting school for the first time is an exciting time.

This site is used to help parents and caregivers share information about their child with the school board staff. Sharing of information before school entry helps to ensure a smooth transition for students with special education needs entering school for the first time.

To request a link to upload the “Tell Us About Your Child” form, and any other documentation that should be shared with HWCDSB staff, click the request link below.

Once the information in the survey has been received, you will receive a link via email where the ‘Tell Us About Your Child’ form and other documentation can be uploaded.

This portal does not replace student registration. Please visit the school website to learn about how to register your child for school if you have not already done so. Registration must take place prior to arrangement of intake meeting.

[Request link to upload ‘Tell Us About Your Child’ form and Other Documentation](#)



Submitting Information: Online Process



Hamilton-Wentworth Catholic
District School Board
Believing, Achieving, Serving

Request Link to Upload 'Tell Us About Your Child' Form and Other Documentation

...

* Required

Parent/Guardian Information

1. First Name *

Enter your answer

2. Last Name *

Enter your answer



Registration Process

- Kindergarten registration can be completed online <https://www.hwcdsb.ca/kindergartenregistration/>
- Contact your home school to schedule a registration appointment.
- Register by **March 1, 2023** so that an intake meeting can be scheduled.



Registration Process

DOCUMENTS AND INFORMATION REQUIRED FOR IN-PERSON AND ONLINE REGISTRATION:

- Proof of Age (i.e., birth certificate, passport, immigration document)
- Proof of Address (i.e., rental or purchase agreement, utility bill, credit card statement)
- Roman Catholic Baptismal Certificate

****ADVISE PRINCIPAL OF YOUR CHILD'S SPECIAL
NEEDS****




City of Hamilton Public Health

Parents/Guardians are responsible for notifying Public Health each time their childcare or school-aged child receives a vaccine.

Parents/Guardians can report this information to Public Health via internet, fax, or phone:

<https://hph.icon.ehealthontario.ca/#!/welcome>

- **By phone:** 905-540-5250
- **By fax:** 905-546-4841



The image shows a yellow form titled "Personal Immunization Record" and "Fiche d'immunisation". It contains fields for Name/Nom, Date of Birth/Date de naissance (with a date format guide: yyyy/mm/dd), and Ontario Health Card Number/Numéro de carte Santé de l'Ontario. At the bottom, it states "This is a permanent record. Please keep in a safe place." and "Fiche d'immunisation permanente à conserver en lieu sûr." The Ontario logo is in the bottom right corner.


Personal Immunization Record
Fiche d'immunisation

Name/Nom _____

____/____/____ mm dd/yy
Date of Birth/Date de naissance _____

Ontario Health Card Number
Numéro de carte Santé de l'Ontario _____

This is a permanent record. Please keep in a safe place.
Fiche d'immunisation permanente à conserver en lieu sûr.

 Ontario



Registration Process



After your child is registered at his/her home school:

- A childcare visit may be arranged
- A virtual school entry intake meeting will be scheduled using Microsoft Teams



School Intake Meetings

- Virtual format using Microsoft Teams
- Opportunity to share information about your child including his/her strengths and needs.
- Scheduled between the end of March to beginning of May
- 1 hour in duration



What information can I share?

- Documentation to support your child's medical diagnosis
- Reports/assessments from professionals working with your child. These may include:
 - Speech and Language Assessment Reports
 - Occupational Therapy Reports
 - Physiotherapy Reports
 - School Entry Report (provided by your child's Resource Teacher)
 - Audiology Reports
 - Vision Reports



Who can I invite to the Intake Meeting?

You are welcome to invite:

- Childcare Staff (Resource Teacher, Teacher, Supervisor, or Support Facilitator)
- Other professionals working with your child



Who else will be attending the Intake Meeting?

- Principal
- School Special Education Resource Teacher
- Central Resource Teacher, Student Support Services
- Board Speech-Language Pathologist
- Board Audiologist (if applicable)
- Home and Community Care Support Services (if applicable))



Information Shared

Parents are encouraged to share:

- Medical diagnosis/conditions
- Assessments, therapy reports, etc.
- Preschool experiences
- Safety concerns



Information Shared

School and Support Staff are encouraged to share:

- School procedures and practices
- Description of services available
- Referral procedures



HWCDSB Speech, Language and Hearing Services

- Speech-Language Pathologist
- Resource Teacher, Deaf and Hard of Hearing Specialist
- Educational Audiologist



SLP Services at School

SLPs support communication skills within the natural context of the classroom setting through:

- Assessment/consultation to identify IEP goals
- Recommendation of strategies/programming
- Coaching and modelling of strategies
- SLP may recommend assistive technology



HOME AND COMMUNITY CARE SUPPORT SERVICES

Hamilton Niagara Haldimand Brant

formerly the Local Health Integration Network (LHIN)

- School Health Support Services available (e.g., nursing)
- Referral procedures and required documents

Marta Wagner

**Manager of Patient Care – Children's Health
Services**



School Based Rehabilitation Services

- Physiotherapy
- Occupational Therapy
- Speech Therapy

Lillian Ciona
Clinical Leader

Ron Joyce Children's Health Centre, Developmental Pediatrics & Rehabilitation

Brooke Wardrope

Occupational Therapist & Intake Clinician

Ron Joyce Children's Health Centre, School Based Rehabilitation Services





HAMILTON • WENTWORTH

Catholic Child Care Centres

Where play is wondrous work.

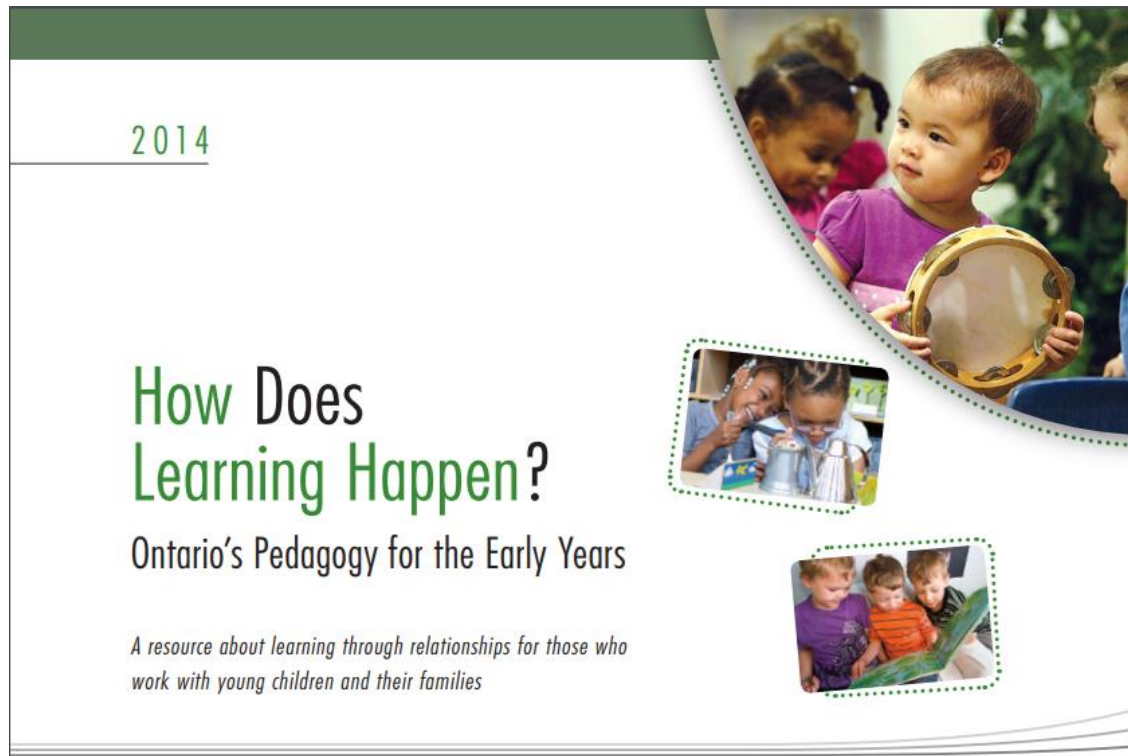


Carrie Horn
Executive Director, Hamilton-Wentworth Catholic Child Care Centres





HAMILTON • WENTWORTH
Catholic Child Care Centres



For information call (905) 523-2349 or
visit www.hwccccc.ca



Welcoming Children with Special Needs to the Sacraments

- Sacramental preparation
- Resource and support to families, parishes and schools
- Accompanying families in these most sacred and special times



We work together as a team



Family

Parish

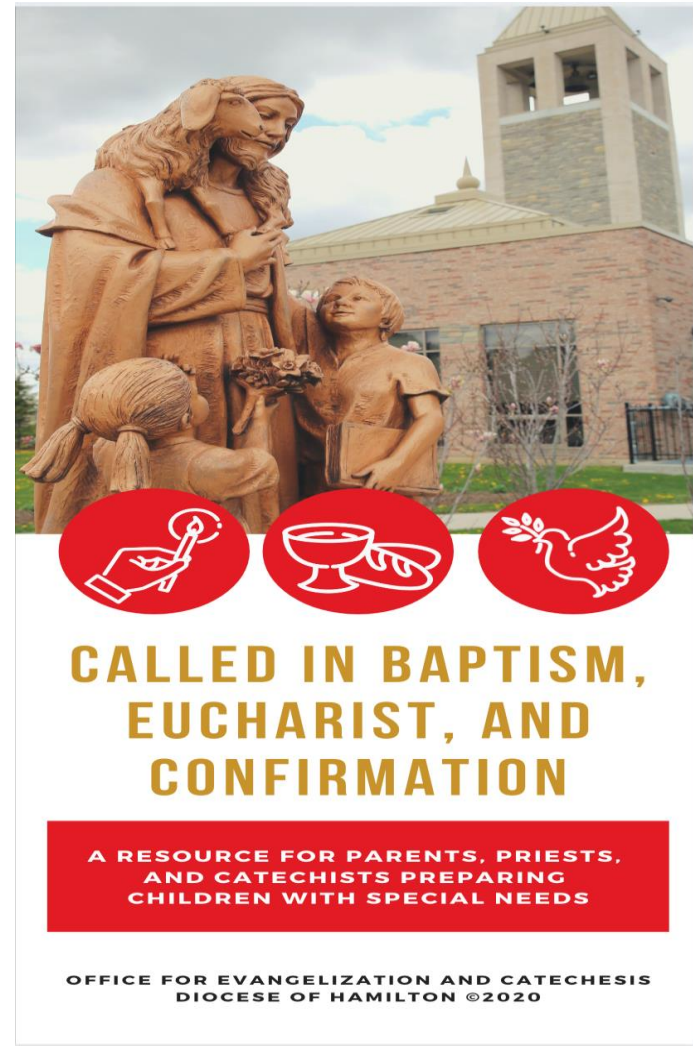
Catholic School



Called in Baptism, Confirmation and Eucharist

A resource for parents
and parishes to
prepare children with
special needs for the
sacraments

Christina Mines
Director of Evangelization and
Catechesis
CMINES@HAMILTONDIOCESE.COM
905 528 7988 X 2239





- **AccessOAP** (an independent intake organization funded by the Ministry of Children, Community and Social Services) manages the intake and registration of children diagnosed with autism and eligible for the Ontario Autism Program.
- Children/ youth must have a written diagnosis of autism child is be under 18, and living in Ontario to register with the Ontario Autism Program.
- Families register for the Ontario Autism Program through AccessOAP.
- AccessOAP also helps families access the supports and services of the Ontario Autism Program.
- Contact information:
 - Website: <https://accessoap.ca/>
 - Phone Number: 1-833-425-2445
 - Email: info@AccessOAP.ca



Ontario Autism Program- Entry to School Program

PROGRAM COMPONENTS	ELIGIBILITY
A six-month curriculum-based program to prepare your child to begin school, with a focus on key readiness skills.	<ul style="list-style-type: none">✓ Be registered with the Ontario Autism Program and received an invitation letter for this service.✓ Children with Autism, who will be entering school for the first time (Kindergarten or Grade 1).
Individualized programming with virtual, in-person, and group-based service elements.	
Individualized transition supports and consultation for the first six months of school.	



Autism Ontario –Contact

If families have a child who is newly diagnosed with Autism, and have *general questions about other funding in addition to OAP, therapy options, or programs near them*, send families the contact information below:



Allyesa Stewart (she/her)
Regional Program & Volunteer Coordinator
Autism Ontario South Region
Serving Hamilton, Niagara, Haldimand, Norfolk & Brant
autismontario.com/region/south
[7150 Montrose Road, Suite 7 | Niagara Falls, ON | L2H 3N3](#)
T: 1-800-472-7789 ext. 267 | E: allyesa@autismontario.com





FREQUENTLY

QUESTIONS

ASKED



Frequently Asked Questions

Does my child have to be Catholic in order to attend a Catholic school?

- Children attending Catholic Schools are baptized Roman Catholic
- Non-Catholic admission process
- Contact the school principal for further information



Frequently Asked Questions

Will my child receive EA support?

- Programs for students with special needs are delivered in the HWCDSB by Kindergarten Classroom Teachers and Designated Early Childhood Educators, supported by Special Education Resource Teachers, and the consultative services of central support staff. Educational Assistant support is assigned to schools based on the needs of each school. In some cases, Classroom Teachers and Designated Early Childhood Educators receive the support of an Educational Assistant in delivering the special education program to groups of students in the classroom.



Frequently Asked Questions

When will my child's Identification, Placement and Review Committee (IPRC) meeting take place?

- Must meet the criteria to be identified as an exceptional student within our board
- Principal will schedule an IPRC meeting after your child has been in school for a period of time



Frequently Asked Questions

When will my child receive an Individual Education Plan (IEP)?

- Identified as exceptional through an IPRC meeting
- IEP must be completed within 30 school days from the date of the IPRC



Frequently Asked Questions

How many students will be in my child's class?

- The educator team in a Kindergarten classes typically consists of a
 - Certified Ontario Teacher
 - Designated Early Childhood Educator (DECE)
- Class sizes can typically enroll up to 29 students
- A Kindergarten class with a teacher and no DECE can enroll up to 15 students



Frequently Asked Questions

What will my child wear to school?

- All students attending the HWCDSB wear school uniforms
- School personnel will provide you with ordering information at registration



Frequently Asked Questions

Will specialized transportation be provided?

- The Board may provide specialized transportation to and from the home school within the catchment area.



Frequently Asked Questions

Are private therapists for ABA and speech allowed to come in the schools?

The HWCDSB works closely with community partners who support students outside of the school. There are essentially four different ways in which the collaborative relationship between the staff of the board and community professionals are operationalized:

- Consultation
- Observation
- Demonstration
- Direct therapy



Frequently Asked Questions

Will the school SLP provide direct therapy?

- The school SLP will connect with you before and after assessing your child to determine speech, language and communication goals for your child.
- Individual therapy is not provided, however, the SLP will work with the classroom team to encourage the use of strategies to support the development of your child's communication skills every day within the natural setting of the play-based classroom.



Frequently Asked Questions

Will someone change my child's diaper while at school?

- Children arrive at school with a wide variety of skills. The intake meeting is the place where parent(s)/guardian(s) are able to share their child's current skills with the school team, including the need for personal care support for students who have such needs.

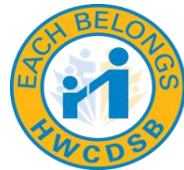


Frequently Asked Questions

May I visit the school with my child prior to school entry?

- School visits in the spring are generally encouraged
- Virtual school tours may be available





EACH BELONGS



Send questions to:

intake@hwcdsb.ca