



Asbestos Reassessment

Thomas J Mahony
57 Stuart Street, Hamilton,
Ontario

Prepared for:

**Hamilton-Wentworth Catholic
District School Board**

90 Mulberry Street
Hamilton, Ontario, L8N 3R9

August 26, 2022

Pinchin File: 303992.004



Asbestos Reassessment

Thomas J Mahony, 57 Stuart Street, Hamilton, Ontario
Hamilton-Wentworth Catholic District School Board

August 26, 2022
Pinchin File: 303992.004

Issued to: Hamilton-Wentworth Catholic District
School Board

Issued on: August 26, 2022

Pinchin File: 303992.004

Issuing Office: Hamilton, ON

Pinchin Contact: Emily Balfour, Project Manager
365.889.5147
ebalfour@pinchin.com



Hamilton-Wentworth
Catholic District School Board
Believing, Achieving, Serving

Author: _____
Emily Balfour
Project Manager
365.889.5147
ebalfour@pinchin.com

Reviewer: _____
Damian Palus, C.E.T.
Operations Manager
289.678.0694
dpalus@pinchin.com



EXECUTIVE SUMMARY

Hamilton-Wentworth Catholic District School Board (Client) retained Pinchin Ltd. (Pinchin) to conduct an asbestos building materials reassessment at the subject building.

The objective of the reassessment was to evaluate the condition and quantity of previously reported asbestos-containing materials (ACM), and develop corrective action plans as required for the purposes of long-term management. The results of this reassessment are not intended for construction, renovation, demolition or project tendering purposes.

Summary of Recommendations

The following is a summary of significant recommendations; refer to the body of the report for detailed recommendations:

- Perform a reassessment of asbestos materials on an annual basis.
- Perform a pre-construction assessment and remove all asbestos-containing materials (ACM) prior to alteration or maintenance work if ACM may be disturbed by the work.
- Follow appropriate safe work procedures when handling or disturbing asbestos.
- Sample any presumed ACM prior to alteration or maintenance work if presumed ACM may be disturbed by the work.

This Executive Summary is subject to the same standard limitations as contained in the report and must be read in conjunction with the entire report.



Asbestos Reassessment

Thomas J Mahony, 57 Stuart Street, Hamilton, Ontario
Hamilton-Wentworth Catholic District School Board

August 26, 2022
Pinchin File: 303992.004

TABLE OF CONTENTS

1.0	INTRODUCTION AND SCOPE	1
1.1	Scope of Assessment	1
2.0	BACKGROUND INFORMATION	1
2.1	Building Year of Construction	1
2.2	Existing Reports.....	1
3.0	FINDINGS	2
3.1	Excluded Asbestos Materials	2
3.2	Confirmed/Presumed Asbestos-Containing Materials and Confirmed Non-Asbestos Materials	3
4.0	RECOMMENDATIONS.....	5
4.1	General	5
4.2	Remedial Work	5
4.3	On-going Management and Maintenance	5
5.0	TERMS AND LIMITATIONS	5
6.0	REFERENCES.....	6

APPENDICES

APPENDIX I	Asbestos Analytical Certificates
APPENDIX II	Location List
APPENDIX III	Hazardous Materials Summary / Sample Log Report
APPENDIX IV	All Data Report
APPENDIX V	Drawings



Asbestos Reassessment

Thomas J Mahony, 57 Stuart Street, Hamilton, Ontario
Hamilton-Wentworth Catholic District School Board

August 26, 2022
Pinchin File: 303992.004

1.0 INTRODUCTION AND SCOPE

Hamilton-Wentworth Catholic District School Board (Client) retained Pinchin Ltd. (Pinchin) to conduct an asbestos building materials reassessment at Thomas J Mahony, located at 57 Stuart Street, Hamilton, Ontario.

The reassessment was performed by Matthew Pitman, Project Technologist on May 24, 2022.

The objectives of the reassessment were to document the locations, quantities and conditions of previously identified asbestos-containing building materials, and develop corrective action plans as required. This reassessment is only to be used for the purposes of long-term management and routine maintenance. The results of this reassessment are not to be used for construction, renovation, demolition or project tendering purposes.

1.1 Scope of Assessment

The objective of the reassessment was to evaluate the condition and quantity of previously reported asbestos-containing materials (ACM's), and develop corrective action plans as required.

Refer to the Asbestos Building Materials Reassessment Methodology report and Annex A dated 2022, Pinchin File 303992.004, for the methodology used during the reassessment.

2.0 BACKGROUND INFORMATION

2.1 Building Year of Construction

Item	Details
Year of Construction	1970

2.2 Existing Reports

2.2.1 Review of Previous Reports

Pinchin previously prepared the following reports, which have been reviewed and relied upon as part of this assessment:

- Asbestos Assessment, Thomas J Mahoney, 57 Stuart Street, Hamilton, Ontario, September 2018, Prepared by Pinchin Ltd., Pinchin File: 224334.
- Asbestos Reassessment, Thomas J Mahoney, 57 Stuart Street, Hamilton, Ontario, September 2019, Prepared by Pinchin Ltd., Pinchin File: 243241.
- Asbestos Reassessment, Thomas J Mahoney, 57 Stuart Street, Hamilton, Ontario, June 2020, Prepared by Pinchin Ltd., Pinchin File: 272113.



Asbestos Reassessment

Thomas J Mahony, 57 Stuart Street, Hamilton, Ontario
Hamilton-Wentworth Catholic District School Board

August 26, 2022
Pinchin File: 303992.004

- Asbestos Reassessment, Thomas J Mahoney, 57 Stuart Street, Hamilton, Ontario, July 2021, Prepared by Pinchin Ltd., Pinchin File: 286533.001.

3.0 FINDINGS

The following section summarizes the findings of the reassessment and provides a general description of the asbestos materials identified. For details on quantities, assessment, sample numbers, friability, condition, and locations of asbestos materials; refer to the Hazardous Materials Summary / Sample Log Report and All Data Report in Appendices III and IV, respectively.

Previous analytical sample results have been relied upon and were included in the original asbestos assessment report completed by MTE Consultants Inc. Additional sample results where collected by Pinchin have been included in Appendix I.

3.1 Excluded Asbestos Materials

A number of materials which might contain asbestos were not sampled during this reassessment due to limitations in scope and methodology. Where present, these materials are assumed to contain asbestos until otherwise proven by sampling and analysis. These materials are not shown on the drawings in Appendix V. Excluded materials presumed to contain asbestos include:

Material	Friability
Roofing, felts and tar	Non-friable
Concrete floor levelling compound	Non-friable
Electrical components or wiring within control centers, breakers, motors or lights, insulation on wiring	Non-friable
Vermiculite in concrete block wall cavities	Friable
Adhesives and duct mastics	Non-friable
Caulking and butyl seals	Non-friable
Fibre reinforced paints and coatings	Non-friable
Paper products	Non-friable
Soffit and fascia boards	Non-friable
Mechanical packing, ropes and gaskets	Non-friable
Vinyl baseboards	Non-friable



Asbestos Reassessment

Thomas J Mahony, 57 Stuart Street, Hamilton, Ontario
Hamilton-Wentworth Catholic District School Board


August 26, 2022
Pinchin File: 303992.004

Material	Friability
Fire resistant doors or metal clad finishes	Non-friable
Vibration dampers on HVAC equipment	Non-friable
Ceramic tile thin-set	Non-friable

3.2 Confirmed/Presumed Asbestos-Containing Materials and Confirmed Non-Asbestos Materials

This section includes materials that have been confirmed asbestos-containing by sample analysis or presumed asbestos-containing by visual identification. Refer to the drawings in Appendix V for the locations of confirmed and presumed ACMs indicated via hatching or symbols. The locations of samples from the historical assessments, performed by Pinchin, have been included on the drawings.

Material and Application	Asbestos Type/Friability	Photo
Pipes are either uninsulated or insulated with non-asbestos fibreglass or elastomeric insulation (Armaflex).	None	
Ducts are either uninsulated or insulated with non-asbestos fibreglass.	None	
Mechanical equipment is either uninsulated or insulated with non-asbestos fibreglass.	None	
All ceiling tiles are presumed to be non-asbestos based on the date of manufacture determined from the date stamp applied to the top of the tiles or the age of the materials determined from the age of the building renovation.	None	

Material and Application	Asbestos Type/Friability	Photo
Drywall joint compound is present on wall and ceiling finishes.	Chrysotile/Non-friable	
Asbestos in drywall joint compound was banned in Canada in 1980. Drywall joint compound in the 2012 and 2018 renovation areas was installed after 1986 (1980 plus a reasonable non-compliance period based on our experience) and is assumed to contain no asbestos.	None	
All vinyl floor tiles and mastic are presumed to be non-asbestos based on historical knowledge of the date of installation.	None (tile) None (mastic)	

Additional notes on the asbestos-containing drywall joint compound discussed above:

- Drywall (gypsum board) and drywall joint compound is present as a wall and ceiling finish throughout the building. As per the methodology, drywall joint compound is sampled at exterior walls, columns or other locations that are unlikely to have been renovated in an attempt to determine the presence of asbestos in the original drywall compound. A total of 9 samples of drywall joint compound were collected (samples S0001A-C, S0002A-C, S0003A-C, lab reference no. 71921701) and it was found that 3 samples contain chrysotile asbestos. The asbestos-positive results indicate that at minimum, the original drywall joint compound application contains asbestos and all drywall joint compound should be presumed to contain asbestos. Further sampling may be considered in an attempt to delineate asbestos-containing drywall compound from newer, non-asbestos drywall compound.



4.0 RECOMMENDATIONS

4.1 General

Perform a detailed intrusive assessment prior to building renovation or demolition operations. The assessment should include; destructive testing (i.e. coring and/or removal of building finishes and components), sampling of other hazardous materials (lead, mercury, PCBs, mould, etc.), and materials not tested in this study (i.e. excluded asbestos materials).

4.2 Remedial Work

There is no remedial work recommended.

4.3 On-going Management and Maintenance

The following recommendations are made regarding on-going management and maintenance work involving the asbestos materials identified.

4.3.1 Asbestos

Maintain the Asbestos Management Program (AMP).

Perform a reassessment of asbestos materials on an annual basis.

Remove asbestos-containing materials (ACM) prior to alteration or maintenance work if ACM may be disturbed by the work. Follow appropriate asbestos precautions for the classification of work being performed.

Sample presumed ACM prior to alteration or maintenance work if the presumed ACM may be disturbed by the work.

Update the asbestos inventory report upon completion of any abatement and removal of asbestos-containing materials.

5.0 TERMS AND LIMITATIONS

This work was performed subject to the Terms and Limitations presented or referenced in the proposal for this project.

Information provided by Pinchin is intended for Client use only. Pinchin will not provide results or information to any party unless disclosure by Pinchin is required by law. Any use by a third party of reports or documents authored by Pinchin or any reliance by a third party on or decisions made by a third party based on the findings described in said documents, is the sole responsibility of such third parties.



Asbestos Reassessment

Thomas J Mahony, 57 Stuart Street, Hamilton, Ontario
Hamilton-Wentworth Catholic District School Board

August 26, 2022
Pinchin File: 303992.004

Pinchin accepts no responsibility for damages suffered by any third party as a result of decisions made or actions conducted. No other warranties are implied or expressed.

6.0 REFERENCES

The following legislation and documents were referenced in completing the assessment and this report:

1. Asbestos on Construction Projects and in Buildings and Repair Operations, Ontario Regulation 278/05.
2. Designated Substances, Ontario Regulation 490/09.

\\pinchin.com\ham\Job\303000s\0303992.000 HWCDSB,Various2022Projects,ASB,CONS\0303992.004
HWCDSB,AllFacilities,2022,ASB,REASSMT\Deliverables\Admin\Thomas J Mahoney\Report\303992.004 Thomas J M ACM Reassessment Report HWCDSB Aug 26 2022.docx

Template: Master Report for Asbestos Reassessment, HAZ, April 23, 2019

APPENDIX I
Asbestos Analytical Certificates



Bulk Asbestos Analysis

By Polarized Light Microscopy
EPA Method: 600/R-93/116 and 40 CFR, Part 763, Subpart E,
App.E



Customer: Pinchin Ltd.
6-875 Main St West
Suite 200
Hamilton, Ontario L8S 4P9

Project: 230748,57 Stuart Street, Hamilton, Ontario,Hamilton-Wentworth Catholic School Board,Thomas J Mahoney

Attn: Emily Balfour
Michael Maiorana

Lab Order ID: 71921701
Analysis ID: 71921701_PLM
Date Received: 8/19/2019
Date Reported: 8/23/2019

Sample ID	Description	Asbestos	Fibrous Components	Non-Fibrous Components	Attributes
Lab Sample ID	Lab Notes				Treatment
S0001A	Drywall joint compound on wall, Lunch/Conference Room, Location 1009	3% Chrysotile		97% Other	Tan Non Fibrous Homogeneous
71921701PLM_1					Dissolved
S0001B	Drywall joint compound on wall, Lunch/Conference Room, Location 1009	Not Analyzed			
71921701PLM_2					
S0001C	Drywall joint compound on wall, Men's Washroom, Location 1010	Not Analyzed			
71921701PLM_3					
S0002A	Drywall joint compound on ceiling, Unknown, Location 1006	3% Chrysotile		97% Other	Tan Non Fibrous Homogeneous
71921701PLM_4					Dissolved
S0002B	Drywall joint compound on ceiling, Womens Washroom, Location 1011	Not Analyzed			
71921701PLM_5					
S0002C	Drywall joint compound on ceiling, Foyer, Location 1002	Not Analyzed			
71921701PLM_6					
S0003A	Drywall joint compound on wall, Warehouse, Location 1015	3% Chrysotile		97% Other	Tan Non Fibrous Homogeneous
71921701PLM_7					Dissolved
S0003B	Drywall joint compound on wall, Warehouse, Location 1015	Not Analyzed			
71921701PLM_8					

Disclaimer: Due to the nature of the EPA 600 method, asbestos may not be detected in samples containing low levels of asbestos. We strongly recommend that analysis of floor tiles, vermiculite, and/or heterogeneous soil samples be conducted by TEM for confirmation of "None Detected" by PLM. This report relates only to the samples tested and may not be reproduced, except in full, without the written approval of SAI. This report may not be used by the client to claim product endorsement by NVLAP or any other agency of the U.S. government. Analytical uncertainty available upon request. Scientific Analytical Institute participates in the NVLAP Proficiency Testing program. Unless otherwise noted blank sample correction was not performed. Estimated MDL is 0.1%.

Philip Szabo (9)

Analyst

Approved Signatory



Bulk Asbestos Analysis

By Polarized Light Microscopy
EPA Method: 600/R-93/116 and 40 CFR, Part 763, Subpart E,
App.E



Customer: Pinchin Ltd.
6-875 Main St West
Suite 200
Hamilton, Ontario L8S 4P9

Attn: Emily Balfour
Michael Maiorana

Project: 230748,57 Stuart Street, Hamilton, Ontario,Hamilton-Wentworth Catholic School
Board,Thomas J Mahoney

Lab Order ID: 71921701
Analysis ID: 71921701_PLM
Date Received: 8/19/2019
Date Reported: 8/23/2019

Sample ID	Description	Asbestos	Fibrous Components	Non-Fibrous Components	Attributes
Lab Sample ID	Lab Notes				Treatment
S0003C	Drywall joint compound on wall, Warehouse, Location 1015	Not Analyzed			
71921701PLM_9					

Disclaimer: Due to the nature of the EPA 600 method, asbestos may not be detected in samples containing low levels of asbestos. We strongly recommend that analysis of floor tiles, vermiculite, and/or heterogeneous soil samples be conducted by TEM for confirmation of "None Detected" by PLM. This report relates only to the samples tested and may not be reproduced, except in full, without the written approval of SAI. This report may not be used by the client to claim product endorsement by NVLAP or any other agency of the U.S. government. Analytical uncertainty available upon request. Scientific Analytical Institute participates in the NVLAP Proficiency Testing program. Unless otherwise noted blank sample correction was not performed. Estimated MDL is 0.1%.


Philip Szabo (9)

Analyst

Approved Signatory

7/92/701

Version 1-15-2012

Client:	Pinchin Ltd.	*Instructions: Use Column "B" for your contact info To See an Example Click the bottom Example Tab. Enter samples between "<<" and ">>" Begin Samples with a "<<" above the first sample and end with a ">>" below the last sample. Only Enter your data on the first sheet "Sheet1" Note: Data 1 and Data 2 are optional fields that do not show up on the official report, however they will be included in the electronic data returned to you to facilitate your reintegration of the report data.	Invoice to: ap@pinchin.com  Scientific Analytical Institute 4604 Dundas Dr. Greensboro, NC 27407 Phone: 336.292.3888 Fax: 336.292.3313 Email: lab@sailab.com
Contact:	Emily Balfour		
Address:	6-875 Main Street West, Suite 200, Hamilton ON L8S 4P9		
Phone:	905-577-6206		
Fax:	905-577-6207		
Email:	ebalfour@pinchin.com mmalorana@pinchin.com 230748, 57 Stuart Street, Hamilton, Ontario, Hamilton-Wentworth Catholic School Board, Thomas J Mahoney		
Project:			
Client Notes:			
P.O. #:		230748	
Date Submitted:	August 16, 2019		
Analysis:	PLM - Stop Positive		
TurnAroundTime:	4days		

Sample Number	Data 1 (Lab use only)	Sample Description	Data 2 (Lab use only)
<<			
S0001A		Drywall joint compound on wall, Lunch/Conference Room, Location 1009	
S0001B		Drywall joint compound on wall, Lunch/Conference Room, Location 1009	
S0001C		Drywall joint compound on wall, Men's Washroom, Location 1010	
S0002A		Drywall joint compound on ceiling, Unknown, Location 1006	
S0002B		Drywall joint compound on ceiling, Womens Washroom, Location 1011	
S0002C		Drywall joint compound on ceiling, Foyer, Location 1002	
S0003A		Drywall joint compound on wall, Warehouse, Location 1015	
S0003B		Drywall joint compound on wall, Warehouse, Location 1015	
S0003C		Drywall joint compound on wall, Warehouse, Location 1015	
>>			

By Bulley
8/19 10:30 AM

Accepted ☒

Rejected ☐

APPENDIX II
Location List

Client: Hamilton-Wentworth Catholic District Sch

Site: 57 Stuart Street, Hamilton, ON

Building Name: Thomas J. Mahony Administration Building

Survey Date:

Last Re-Assessment: 2022-05-24

Location No.	Name or Description	Area ft ²	Floor No.	Bldg. Phase	Notes
1	General	0		A	
1001	Front Office	0		A	
1002	Foyer	0		A	
1003	Controller Office	0		A	
1004	Accounting Office	0		A	
1005	Washroom	0		A	
1006	Unknown	0		A	
1007	Systems Room	0		A	
1008	Office	0		A	amalgamated into 1009
1009	Lunch/Conference Room	0		A	
1010	Mens Washroom	0		A	
1011	Womens Washroom	0		A	
1012	Staff Washroom	0		A	
1013	Trades Room	0		A	
1014	Financial Resources	0		A	
1015	Warehouse	0		A	
1016	Warehouse Storage	0		A	
1017	Paint Storage	0		A	
1018	Storage	0		A	
2001	Drawing Storage	0		A	
2002	Open Area	0		A	
2003	Mechanical Room	0		A	
2004	Office	0		A	

APPENDIX III

Hazardous Materials Summary / Sample Log Report

Client: Hamilton-Wentworth Catholic District Sch

Site: 57 Stuart Street, Hamilton, ON

Building Name: Thomas J. Mahony Administration Building

Survey Date:

HAZMAT	Sample No	System/Component/Material/Sample Description	Locations	Bldg. Phase	LF	SF	EA	%	Type	Positive	Friability
Asbestos	S0001 ABC	Wall Drywall And Joint Compound	1001,1002,1003,1004,1005,1006,1009,1010,1011	A	0	0	0	100	Chrysotile	Yes	NF
Asbestos	S0002 ABC	Ceiling Drywall And Joint Compound	1001,1002,1003,1004,1005,1006,1007,1009,1010,1011	A	0	0	0	100	Chrysotile	Yes	NF
Asbestos	S0003 ABC	Wall Drywall And Joint Compound	1015	A	0	0	0	100	Chrysotile	Yes	NF
Asbestos	V9500	Floor Adhesive/mastic Vinyl Baseboards	1	A	0	0	0	100	Presumed Asbestos	Yes	NF
Asbestos	V9500	Floor Floor Levelling Compound	1	A	0	0	0	100	Presumed Asbestos	Yes	F
Asbestos	V9500	Other Door, Window Caulking	1	A	0	0	0	100	Presumed Asbestos	Yes	NF
Asbestos	V9500	Other Electrical Equipment Cement Product Transite Components Electrical And Switchgear Equipment	1	A	0	0	0	100	Presumed Asbestos	Yes	NF
Asbestos	V9500	Other Electrical Wire Textile Woven Jacketing And Insulation On Older Wiring	1	A	0	0	0	100	Presumed Asbestos	Yes	NF
Asbestos	V9500	Structure Roof Roofing Material	1	A	0	0	0	100	Presumed Asbestos	Yes	NF
Asbestos	V9500	Wall Interior Vermiculite/concrete Block Walls	1	A	0	0	0	100	Presumed Asbestos	Yes	F
Asbestos	V0000	Ceiling Acoustic Tile Ceiling Tiles (lay-in) 2x4 Long Fissure Random Pinhole (installed 2012)	2001	A	0	0	0	0	Non Asbestos	No	
Asbestos	V0000	Ceiling Acoustic Tile Ceiling Tiles (lay-in) 2x4 Short Fissure Random Pinhole (installed 2012)	2004	A	0	0	0	0	Non Asbestos	No	
Asbestos	V0000	Ceiling Acoustic Tile Ceiling Tiles (lay-in) Date 06/13/18	1013,1014	A	0	0	0	100	Non Asbestos	No	
Asbestos	V0000	Ceiling Drywall And Joint Compound Installed 2018	1012	A	0	0	0	0	Non Asbestos	No	
Asbestos	V0000	Floor Carpet	1003,1004,1006,1007,2004	A	0	0	0	0	Non Asbestos	No	
Asbestos	V0000	Floor Ceramic Tiles	1001,1002	A	0	0	0	0	Non Asbestos	No	
Asbestos	V0000	Floor Ceramic Tiles Stone Look	1005,1010,1011	A	0	0	0	0	Non Asbestos	No	
Asbestos	V0000	Floor Concrete (poured)	1015,1016,1017,1018	A	0	0	0	0	Non Asbestos	No	
Asbestos	V0000	Floor Laminate	1009	A	0	0	0	0	Non Asbestos	No	
Asbestos	V0000	Floor Mastic Installed 2012	2001	A	0	0	0	0	Non Asbestos	No	

HAZMAT	Sample No	System/Component/Material/Sample Description	Locations	Bldg. Phase	LF	SF	EA	%	Type	Positive	Friability
Asbestos	V0000	Floor Mastic Installed 2018	1005,1009,1012,1013,1014	A	0	0	0	100	Non Asbestos	No	
Asbestos	V0000	Floor Vinyl Floor Tile (no Mastic) 12x12 Light Grey Marble (installed 2012)	2001	A	0	0	0	0	Non Asbestos	No	
Asbestos	V0000	Floor Vinyl Floor Tile (no Mastic) 12x12 White W Brown Fleck (installed 2018)	1013	A	0	0	0	100	Non Asbestos	No	
Asbestos	V0000	Floor Vinyl Floor Tile (no Mastic) 12x12 White W Light Fleck (installed 2018)	1014	A	0	0	0	0	Non Asbestos	No	
Asbestos	V0000	Floor Vinyl Floor Tile (no Mastic) 12x12 White With Light Fleck (installed 2018)	1012	A	0	0	0	0	Non Asbestos	No	
Asbestos	V0000	Floor Wood	2002,2003	A	0	0	0	0	Non Asbestos	No	
Asbestos	V0000	Other Masonry	1	A	0	0	0	0	Non Asbestos	No	
Asbestos	V0000	Piping Roof Hopper (drain) Polyvinyl Chloride (pvc)	1015,2003	A	0	0	0	100	Non Asbestos	No	
Asbestos	V0000	Structure Beam Deck Joist Steel Open Web Steel Joist Support	1015,1016,1017,1018,2002,2003	A	0	0	0	0	Non Asbestos	No	
Asbestos	V0000	Wall Drywall (no Compound) Unfinished	1016,1017,1018	A	0	0	0	0	Non Asbestos	No	
Asbestos	V0000	Wall Drywall And Joint Compound Installed 2012	2001,2002,2003,2004	A	0	0	0	0	Non Asbestos	No	
Asbestos	V0000	Wall Drywall And Joint Compound Installed 2018	1012,1014	A	0	0	0	0	Non Asbestos	No	
Asbestos	V0000	Wall Masonry	1005,1015,2003	A	0	0	0	0	Non Asbestos	No	
Asbestos	V0000	Wall Wood	1007,1013	A	0	0	0	0	Non Asbestos	No	

Legend:

Sample number		Units			
S####	Asbestos sample collected	SF	Square feet	NF	Non Friable material.
L####	Paint sample collected	LF	Linear feet	F	Friable material
P####	PCB sample collected	EA	Each	PF	Potentially Friable material
M####	Mould sample collected	%	Percentage		
V####	Material visually similar to numbered sample collected				
V0000	Known non Hazardous Material				
V9000	Material is visually identified as Hazardous Material				
V9500	Material is presumed to be Hazardous Material				
[Loc. No.]	Abated Material				

APPENDIX IV
All Data Report

ALL DATA REPORT

Client: Hamilton-Wentworth Catholic District Sch **Site:** Admin

Building Name: Thomas J. Mahony
Administration Building
Room #:
Last Re-Assessment: 2022-05-24

Location: #1 : General
Survey Date: 2020-04-14

Floor:

Area (sqft): 0

ASBESTOS																
System	Component	Material	Item	Covering	A*	V*	AP*	Good	Fair	Poor	Unit	Sample	Asbestos Type	Amount	Hazard	Friable
Floor		Adhesive/mastic, vinyl baseboards			D	N		100			%	V9500	Presumed Asbestos		Presumed Asbestos	NF
Floor		Floor Levelling Compound			D	N		100			%	V9500	Presumed Asbestos		Presumed Asbestos	F
Other		Masonry			A	Y						V0000	Non-Asbestos		None	
Other	Door	Caulking			A	Y		100			%	V9500	Presumed Asbestos		Presumed Asbestos	NF
Other	Electrical Equipment	Cement Product, Transite components electrical and switchgear equipment			D	N		100			%	V9500	Presumed Asbestos		Presumed Asbestos	NF
Other	Electrical Wire	Textile, Woven jacketing and insulation on older wiring			D	N		100			%	V9500	Presumed Asbestos		Presumed Asbestos	NF
Other	Window	Caulking			A	Y		100			%	V9500	Presumed Asbestos		Presumed Asbestos	NF
Structure	Roof	Roofing material			C	Y		100			%	V9500	Presumed Asbestos		Presumed Asbestos	NF
Wall	Interior	Vermiculite/concrete block walls			D	N		100			%	V9500	Presumed Asbestos		Presumed Asbestos	F

ALL DATA REPORT

Client: Hamilton-Wentworth Catholic District Sch **Site:** Admin
Location: #1001 : Front Office **Floor:**
Survey Date: 2020-04-14

Building Name: Thomas J. Mahony
Administration Building
Room #:
Last Re-Assessment: 2022-05-24

Area (sqft): 0

ASBESTOS																
System	Component	Material	Item	Covering	A*	V*	AP*	Good	Fair	Poor	Unit	Sample	Asbestos Type	Amount	Hazard	Friable
Ceiling		Drywall and joint compound			C	Y		100			%	V0002	Chrysotile	0.5-5%	Confirmed Asbestos	NF
Floor		Ceramic Tiles			A	Y						V0000	Non-Asbestos		None	
Wall		Drywall and joint compound			A	Y		100			%	V0001	Chrysotile	0.5-5%	Confirmed Asbestos	NF

Client: Hamilton-Wentworth Catholic District Sch **Site:** Admin
Location: #1002 : Foyer **Floor:**
Survey Date: 2020-04-14

Building Name: Thomas J. Mahony
Administration Building
Room #:
Last Re-Assessment: 2022-05-24

Area (sqft): 0

ASBESTOS																
System	Component	Material	Item	Covering	A*	V*	AP*	Good	Fair	Poor	Unit	Sample	Asbestos Type	Amount	Hazard	Friable
Ceiling		Drywall and joint compound			C	Y		100			%	S0002C	Chrysotile	0.5-5%	Confirmed Asbestos	NF
Floor		Ceramic Tiles			A	Y						V0000	Non-Asbestos		None	
Wall		Drywall and joint compound			A	Y		100			%	V0001	Chrysotile	0.5-5%	Confirmed Asbestos	NF

ALL DATA REPORT

Client: Hamilton-Wentworth Catholic District Sch **Site:** Admin
Location: #1003 : Controller Office **Floor:**
Survey Date: 2020-04-14

Building Name: Thomas J. Mahony
Administration Building
Room #:
Last Re-Assessment: 2022-05-24

Area (sqft): 0

ASBESTOS																
System	Component	Material	Item	Covering	A*	V*	AP*	Good	Fair	Poor	Unit	Sample	Asbestos Type	Amount	Hazard	Friable
Ceiling		Drywall and joint compound			C	Y		100			%	V0002	Chrysotile	0.5-5%	Confirmed Asbestos	NF
Floor		Carpet			A	Y						V0000	Non-Asbestos		None	
Wall		Drywall and joint compound			A	Y		100			%	V0001	Chrysotile	0.5-5%	Confirmed Asbestos	NF

Client: Hamilton-Wentworth Catholic District Sch **Site:** Admin
Location: #1004 : Accounting Office **Floor:**
Survey Date: 2020-04-14

Building Name: Thomas J. Mahony
Administration Building
Room #:
Last Re-Assessment: 2022-05-24

Area (sqft): 0

ASBESTOS																
System	Component	Material	Item	Covering	A*	V*	AP*	Good	Fair	Poor	Unit	Sample	Asbestos Type	Amount	Hazard	Friable
Ceiling		Drywall and joint compound			C	Y		100			%	V0002	Chrysotile	0.5-5%	Confirmed Asbestos	NF
Floor		Carpet			A	Y						V0000	Non-Asbestos		None	
Wall		Drywall and joint compound			A	Y		100			%	V0001	Chrysotile	0.5-5%	Confirmed Asbestos	NF

ALL DATA REPORT

Client: Hamilton-Wentworth Catholic District Sch **Site:** Admin
Location: #1005 : Washroom **Floor:**
Survey Date: 2020-04-14

Building Name: Thomas J. Mahony
Administration Building
Room #:
Last Re-Assessment: 2022-05-24

Area (sqft): 0

ASBESTOS																
System	Component	Material	Item	Covering	A*	V*	AP*	Good	Fair	Poor	Unit	Sample	Asbestos Type	Amount	Hazard	Friable
Ceiling		Drywall and joint compound			C	Y		100			%	V0002	Chrysotile	0.5-5%	Confirmed Asbestos	NF
Floor		Ceramic Tiles, Stone Look			A	Y						V0000	Non-Asbestos		None	
Floor		Mastic, Installed 2018			D	N						V0000	Non-Asbestos		None	
Wall		Drywall and joint compound			A	Y		100			%	V0001	Chrysotile	0.5-5%	Confirmed Asbestos	NF
Wall		Masonry			A	Y						V0000	Non-Asbestos		None	

Client: Hamilton-Wentworth Catholic District Sch **Site:** Admin
Location: #1006 : Unknown **Floor:**
Survey Date: 2020-04-14

Building Name: Thomas J. Mahony
Administration Building
Room #:
Last Re-Assessment: 2022-05-24

Area (sqft): 0

ASBESTOS																
System	Component	Material	Item	Covering	A*	V*	AP*	Good	Fair	Poor	Unit	Sample	Asbestos Type	Amount	Hazard	Friable
Ceiling		Drywall and joint compound			C	Y		100			%	S0002A	Chrysotile	0.5-5%	Confirmed Asbestos	NF
Floor		Carpet			A	Y						V0000	Non-Asbestos		None	
Wall		Drywall and joint compound			A	Y		100			%	V0001	Chrysotile	0.5-5%	Confirmed Asbestos	NF

ALL DATA REPORT

Client: Hamilton-Wentworth Catholic District Sch **Site:** Admin
Location: #1007 : Systems Room **Floor:**
Survey Date: 2020-04-14

Building Name: Thomas J. Mahony
Administration Building
Room #:
Last Re-Assessment: 2022-05-24

Area (sqft): 0

ASBESTOS																
System	Component	Material	Item	Covering	A*	V*	AP*	Good	Fair	Poor	Unit	Sample	Asbestos Type	Amount	Hazard	Friable
Ceiling		Drywall and joint compound			C	Y		100			%	V0002	Chrysotile	0.5-5%	Confirmed Asbestos	NF
Floor		Carpet			A	Y						V0000	Non-Asbestos		None	
Wall		Wood			A	Y						V0000	Non-Asbestos		None	

Client: Hamilton-Wentworth Catholic District Sch **Site:** Admin
Location: #1009 : Lunch/Conference Room **Floor:**
Survey Date: 2020-04-14

Building Name: Thomas J. Mahony
Administration Building
Room #:
Last Re-Assessment: 2022-05-24

Area (sqft): 0

ASBESTOS																
System	Component	Material	Item	Covering	A*	V*	AP*	Good	Fair	Poor	Unit	Sample	Asbestos Type	Amount	Hazard	Friable
Ceiling		Drywall and joint compound			C	Y		100			%	V0002	Chrysotile	0.5-5%	Confirmed Asbestos	NF
Floor		Laminate			A	Y						V0000	Non-Asbestos		None	
Floor		Mastic, Installed 2018			D	N						V0000	Non-Asbestos		None	
Wall		Drywall and joint compound			A	Y		50			%	S0001AC	Chrysotile	0.5-5%	Confirmed Asbestos	NF

ALL DATA REPORT

Client: Hamilton-Wentworth Catholic District Sch **Site:** Admin
Location: #1010 : Mens Washroom **Floor:**
Survey Date: 2020-04-14

Building Name: Thomas J. Mahony
Administration Building
Room #:
Last Re-Assessment: 2022-05-24

Area (sqft): 0

ASBESTOS																
System	Component	Material	Item	Covering	A*	V*	AP*	Good	Fair	Poor	Unit	Sample	Asbestos Type	Amount	Hazard	Friable
Ceiling		Drywall and joint compound			C	Y		100			%	V0002	Chrysotile	0.5-5%	Confirmed Asbestos	NF
Floor		Ceramic Tiles, Stone Look			A	Y						V0000	Non-Asbestos		None	
Wall		Drywall and joint compound			A	Y		100			%	S0001B	Chrysotile	0.5-5%	Confirmed Asbestos	NF

Client: Hamilton-Wentworth Catholic District Sch **Site:** Admin
Location: #1011 : Womens Washroom **Floor:**
Survey Date: 2020-04-14

Building Name: Thomas J. Mahony
Administration Building
Room #:
Last Re-Assessment: 2022-05-24

Area (sqft): 0

ASBESTOS																
System	Component	Material	Item	Covering	A*	V*	AP*	Good	Fair	Poor	Unit	Sample	Asbestos Type	Amount	Hazard	Friable
Ceiling		Drywall and joint compound			C	Y		100			%	S0002B	Chrysotile	0.5-5%	Confirmed Asbestos	NF
Floor		Ceramic Tiles, Stone Look			A	Y						V0000	Non-Asbestos		None	
Wall		Drywall and joint compound			A	Y		100			%	V0001	Chrysotile	0.5-5%	Confirmed Asbestos	NF

ALL DATA REPORT

Client: Hamilton-Wentworth Catholic District Sch **Site:** Admin

Location: #1012 : Staff Washroom

Survey Date: 2020-04-14

Floor:

Building Name: Thomas J. Mahony

Administration Building

Room #:

Last Re-Assessment: 2022-05-24

Area (sqft): 0

ASBESTOS																
System	Component	Material	Item	Covering	A*	V*	AP*	Good	Fair	Poor	Unit	Sample	Asbestos Type	Amount	Hazard	Friable
Ceiling		Drywall and joint compound, Installed 2018			C	Y						V0000	Non-Asbestos		None	
Floor		Mastic, Installed 2018			D	N						V0000	Non-Asbestos		None	
Floor		Vinyl Floor Tile (No Mastic), 12x12 White with Light Fleck (Installed 2018)			A	Y						V0000	Non-Asbestos		None	
Wall		Drywall and joint compound, Installed 2018			A	Y						V0000	Non-Asbestos		None	

Client: Hamilton-Wentworth Catholic District Sch **Site:** Admin

Location: #1013 : Trades Room

Survey Date: 2020-04-14

Floor:

Building Name: Thomas J. Mahony

Administration Building

Room #:

Last Re-Assessment: 2022-05-24

Area (sqft): 0

ASBESTOS																
System	Component	Material	Item	Covering	A*	V*	AP*	Good	Fair	Poor	Unit	Sample	Asbestos Type	Amount	Hazard	Friable
Ceiling	Acoustic Tile	Ceiling Tiles (lay-in), date 06/13/18			C	Y		100			%	V0000	Non-Asbestos		None	
Floor		Mastic, Installed 2018			D	N		100			%	V0000	Non-Asbestos		None	
Floor		Vinyl Floor Tile (No Mastic), 12x12 White w Brown Fleck (Installed 2018)			A	Y		100			%	V0000	Non-Asbestos		None	
Wall		Wood			A	Y						V0000	Non-Asbestos		None	

ALL DATA REPORT

Client: Hamilton-Wentworth Catholic District Sch **Site:** Admin

Location: #1014 : Financial Resources

Survey Date: 2020-04-14

Floor:

Building Name: Thomas J. Mahony

Administration Building

Room #:

Last Re-Assessment: 2022-05-24

Area (sqft): 0

ASBESTOS																
System	Component	Material	Item	Covering	A*	V*	AP*	Good	Fair	Poor	Unit	Sample	Asbestos Type	Amount	Hazard	Friable
Ceiling	Acoustic Tile	Ceiling Tiles (lay-in), date 06/13/18			C	Y						V0000	Non-Asbestos		None	
Floor		Mastic, Installed 2018			D	N						V0000	Non-Asbestos		None	
Floor		Vinyl Floor Tile (No Mastic), 12x12 White w Light Fleck (Installed 2018)			A	Y						V0000	Non-Asbestos		None	
Wall		Drywall and joint compound, Installed 2018			A	Y						V0000	Non-Asbestos		None	

Client: Hamilton-Wentworth Catholic District Sch **Site:** Admin

Location: #1015 : Warehouse

Survey Date: 2020-04-14

Floor:

Building Name: Thomas J. Mahony

Administration Building

Room #:

Last Re-Assessment: 2022-05-24

Area (sqft): 0

ASBESTOS																
System	Component	Material	Item	Covering	A*	V*	AP*	Good	Fair	Poor	Unit	Sample	Asbestos Type	Amount	Hazard	Friable
Floor		Concrete (poured)			A	Y						V0000	Non-Asbestos		None	
Piping	Roof Hopper (drain)	Polyvinyl chloride (PVC)			C	N		100			%	V0000	Non-Asbestos		None	
Structure	Beam Deck Joist	Steel, Open Web Steel Joist Support			C	Y						V0000	Non-Asbestos		None	
Wall		Drywall and joint compound			A	Y		100			%	S0003ABC	Chrysotile	0.5-5%	Confirmed Asbestos	NF
Wall		Masonry			A	Y						V0000	Non-Asbestos		None	

ALL DATA REPORT

Client: Hamilton-Wentworth Catholic District Sch **Site:** Admin

Location: #1016 : Warehouse Storage

Survey Date: 2020-04-14

Floor:

Building Name: Thomas J. Mahony

Administration Building

Room #:

Last Re-Assessment: 2022-05-24

Area (sqft): 0

ASBESTOS																
System	Component	Material	Item	Covering	A*	V*	AP*	Good	Fair	Poor	Unit	Sample	Asbestos Type	Amount	Hazard	Friable
Floor		Concrete (poured)			A	Y						V0000	Non-Asbestos		None	
Structure	Beam Deck Joist	Steel, Open Web Steel Joist Support			C	Y						V0000	Non-Asbestos		None	
Wall		Drywall (no compound), Unfinished			A	Y						V0000	Non-Asbestos		None	

Client: Hamilton-Wentworth Catholic District Sch **Site:** Admin

Location: #1017 : Paint Storage

Survey Date: 2020-04-14

Floor:

Building Name: Thomas J. Mahony

Administration Building

Room #:

Last Re-Assessment: 2022-05-24

Area (sqft): 0

ASBESTOS																
System	Component	Material	Item	Covering	A*	V*	AP*	Good	Fair	Poor	Unit	Sample	Asbestos Type	Amount	Hazard	Friable
Floor		Concrete (poured)			A	Y						V0000	Non-Asbestos		None	
Structure	Beam Deck Joist	Steel, Open Web Steel Joist Support			C	Y						V0000	Non-Asbestos		None	
Wall		Drywall (no compound), Unfinished			A	Y						V0000	Non-Asbestos		None	

ALL DATA REPORT

Client: Hamilton-Wentworth Catholic District Sch **Site:** Admin

Building Name: Thomas J. Mahony
Administration Building

Location: #1018 : Storage

Floor:

Room #:

Area (sqft): 0

Survey Date: 2020-04-14

Last Re-Assessment: 2022-05-24

ASBESTOS																
System	Component	Material	Item	Covering	A*	V*	AP*	Good	Fair	Poor	Unit	Sample	Asbestos Type	Amount	Hazard	Friable
Floor		Concrete (poured)			A	Y						V0000	Non-Asbestos		None	
Structure	Beam Deck Joist	Steel, Open Web Steel Joist Support			C	Y						V0000	Non-Asbestos		None	
Wall		Drywall (no compound), Unfinished			A	Y						V0000	Non-Asbestos		None	

Client: Hamilton-Wentworth Catholic District Sch **Site:** Admin

Building Name: Thomas J. Mahony
Administration Building

Location: #2001 : Drawing Storage

Floor:

Room #:

Area (sqft): 0

Survey Date: 2020-04-14

Last Re-Assessment: 2022-05-24

ASBESTOS																
System	Component	Material	Item	Covering	A*	V*	AP*	Good	Fair	Poor	Unit	Sample	Asbestos Type	Amount	Hazard	Friable
Ceiling	Acoustic Tile	Ceiling Tiles (lay-in), 2x4 Long Fissure Random Pinhole (installed 2012)			C	Y						V0000	Non-Asbestos		None	
Floor		Mastic, Installed 2012			D	N						V0000	Non-Asbestos		None	
Floor		Vinyl Floor Tile (No Mastic), 12x12 Light Grey Marble (installed 2012)			A	Y						V0000	Non-Asbestos		None	
Wall		Drywall and joint compound, Installed 2012			A	Y						V0000	Non-Asbestos		None	

ALL DATA REPORT

Client: Hamilton-Wentworth Catholic District Sch **Site:** Admin

Location: #2002 : Open Area

Survey Date: 2020-04-14

Floor:

Building Name: Thomas J. Mahony

Administration Building

Room #:

Last Re-Assessment: 2022-05-24

Area (sqft): 0

ASBESTOS																
System	Component	Material	Item	Covering	A*	V*	AP*	Good	Fair	Poor	Unit	Sample	Asbestos Type	Amount	Hazard	Friable
Floor		Wood			A	Y						V0000	Non-Asbestos		None	
Structure	Beam Deck Joist	Steel, Open Web Steel Joist Support			C	Y						V0000	Non-Asbestos		None	
Wall		Drywall and joint compound, Installed 2012			A	Y						V0000	Non-Asbestos		None	

Client: Hamilton-Wentworth Catholic District Sch **Site:** Admin

Location: #2003 : Mechanical Room

Survey Date: 2020-04-14

Floor:

Building Name: Thomas J. Mahony

Administration Building

Room #:

Last Re-Assessment: 2022-05-24

Area (sqft): 0

ASBESTOS																
System	Component	Material	Item	Covering	A*	V*	AP*	Good	Fair	Poor	Unit	Sample	Asbestos Type	Amount	Hazard	Friable
Floor		Wood			A	Y						V0000	Non-Asbestos		None	
Piping		Polyvinyl chloride (PVC)			C	Y						V0000	Non-Asbestos		None	
Structure	Beam Deck Joist	Steel, Open Web Steel Joist Support			C	Y						V0000	Non-Asbestos		None	
Wall		Drywall and joint compound, Installed 2012			A	Y						V0000	Non-Asbestos		None	
Wall		Masonry			A	Y						V0000	Non-Asbestos		None	

ALL DATA REPORT

Client: Hamilton-Wentworth Catholic District Sch **Site:** Admin

Location: #2004 : Office

Survey Date: 2020-04-14

Floor:

Building Name: Thomas J. Mahony

Administration Building

Room #:

Last Re-Assessment: 2022-05-24

Area (sqft): 0

ASBESTOS																
System	Component	Material	Item	Covering	A*	V*	AP*	Good	Fair	Poor	Unit	Sample	Asbestos Type	Amount	Hazard	Friable
Ceiling	Acoustic Tile	Ceiling Tiles (lay-in), 2x4 Short Fissure Random Pinhole (installed 2012)			C	Y						V0000	Non-Asbestos		None	
Floor		Carpet			A	Y						V0000	Non-Asbestos		None	
Wall		Drywall and joint compound, Installed 2012			A	Y						V0000	Non-Asbestos		None	

Legend:

Sample number		Units		Other	
S####	Asbestos sample collected	SF	Square feet	A	Access
V####	Material visually similar to numbered sample collected	LF	Linear feet	V	Visible
V0000	Known non-asbestos material	EA	Each	AP	Air Plenum
V9000	Visually identified as an asbestos material	%	Percentage	F	Friable material
V9500	Material is presumed to be an asbestos material			NF	Non Friable material
				PF	Potentially Friable material

Access

A	Accessible to all building occupants
B	Accessible to maintenance and operations staff without a ladder
C	Accessible to maintenance and operations staff with a ladder. Also rarely entered, locked areas
D	Not normally accessible

Condition

Good	No visible damage or deterioration
Fair	Minor, repairable damage, cracking, delamination or deterioration
Poor	Irreparable damage or deterioration with exposed and missing material

Visible

Y	The material is visible when standing on the floor of the room, without the removal or opening of other building components (e.g. ceiling tiles or access panels).
N	The material is not visible to view when standing on the floor of the room and requires the removal of a building component (e.g. ceilings tiles or access panels) to view and access. Includes rarely entered crawlspaces, attic spaces, etc. Observations will be limited to the extent visible from the access points.

Air Plenum

Yes or No	The material is in a return air plenum or in a direct airstream or there is evidence of air erosion (e.g. duct for heating or cooling blowing directly on or across an ACM). This field is only completed where Air Plenum consideration is required by regulation.
-----------	---

Colour Coding

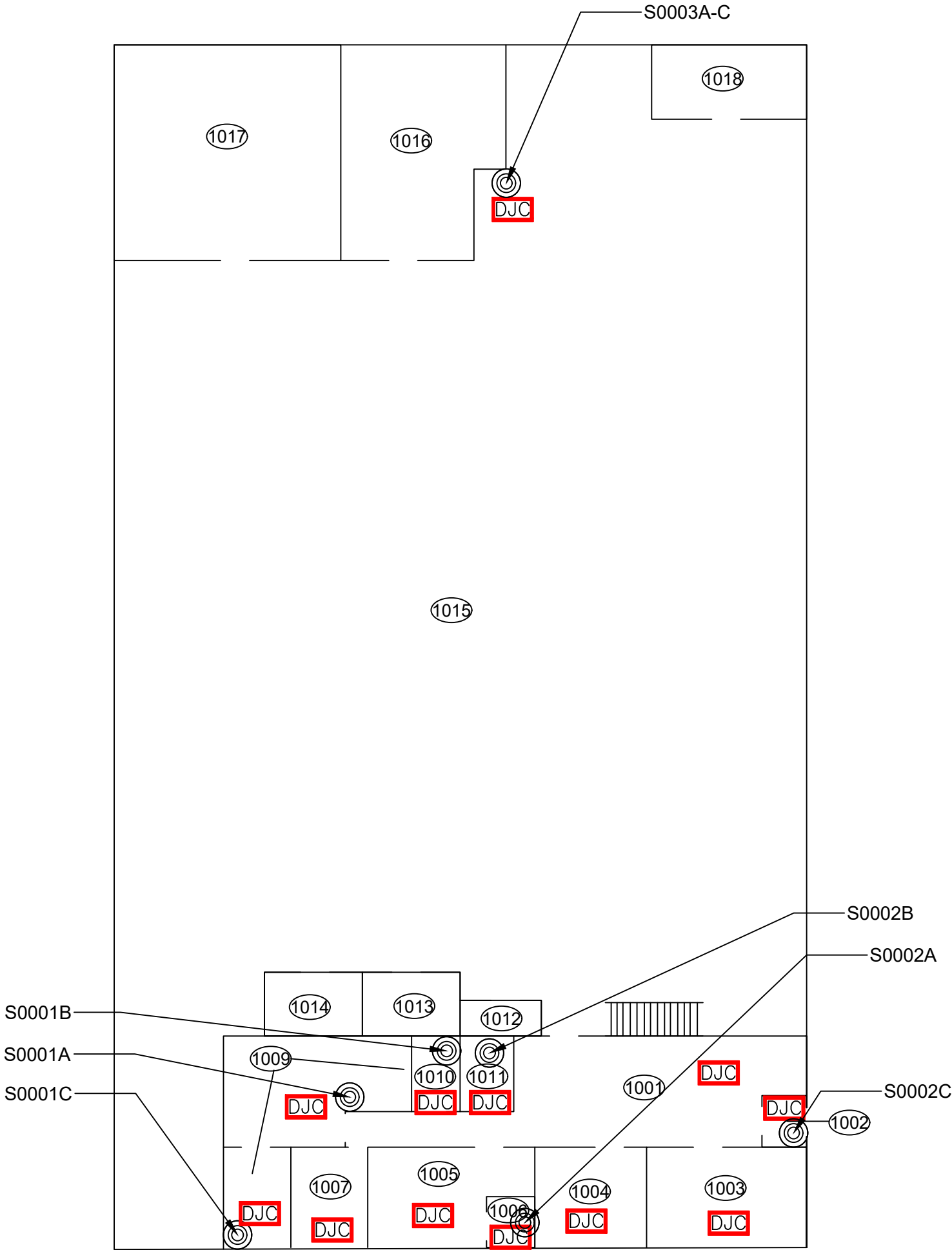
	The material is known to contain regulated concentrations of asbestos; either by analytical results or visible identification (use of the V9000 code).
	The material is presumed to contain asbestos; based on visual appearances; typically a material known to historically contain asbestos; however, not sampled due to limited access or the destructive nature of the sampling.

APPENDIX V
Drawings

NOT ALL KNOWN OR SUSPECTED ASBESTOS BUILDING MATERIALS MAY BE DEPICTED ON THE DRAWING. REFER TO THE ASBESTOS REASSESSMENT REPORT FOR A COMPLETE LIST OF KNOWN AND SUSPECTED ASBESTOS BUILDING MATERIALS.

LEGEND IS COLOUR DEPENDENT. NON-COLOUR COPIES MAY ALTER INTERPRETATION.

BASE PLAN PROVIDED BY CLIENT.



905-577-6206 www.pinchin.com

LEGEND:

- (X) LOCATION NUMBER
- ◎ ASBESTOS BULK SAMPLE

ASBESTOS-CONTAINING MATERIALS:

- DJC DRYWALL JOINT COMPOUND

CLIENT:



LOCATION:

THOMAS J. MAHONY
57 STUART STREET
HAMILTON, ONTARIO

TITLE:

ASBESTOS REASSESSMENT
FLOOR LEVEL 1

DATE:

AUGUST 2022

PROJECT # :

303992.004

DRAWN BY:

EB

CHECKED BY:

EB

SCALE:

NTS

DRAWING:

1 OF 2




NOT ALL KNOWN OR SUSPECTED ASBESTOS BUILDING MATERIALS MAY BE DEPICTED ON THE DRAWING. REFER TO THE ASBESTOS REASSESSMENT REPORT FOR A COMPLETE LIST OF KNOWN AND SUSPECTED ASBESTOS BUILDING MATERIALS.

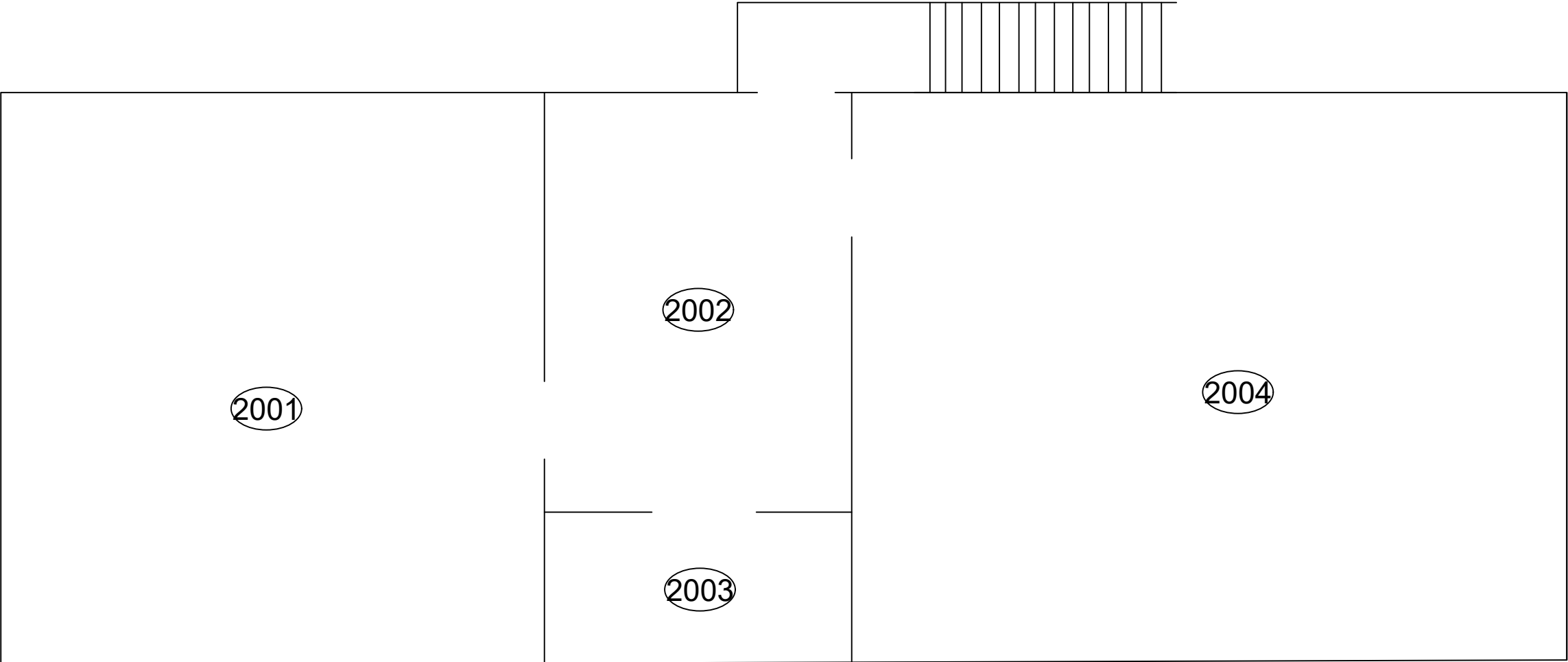
LEGEND IS COLOUR DEPENDENT. NON-COLOUR COPIES MAY ALTER INTERPRETATION.

BASE PLAN PROVIDED BY CLIENT.



905-577-6206 www.pinchin.com

- LEGEND:
-  LOCATION NUMBER
 -  ASBESTOS BULK SAMPLE
- ASBESTOS-CONTAINING MATERIALS:
-  DRYWALL JOINT COMPOUND



CLIENT:



Hamilton-Wentworth
Catholic District School Board
Believing. Achieving. Serving

LOCATION:
THOMAS J. MAHONY
57 STUART STREET
HAMILTON, ONTARIO

TITLE:

ASBESTOS REASSESSMENT
FLOOR LEVEL 2

DATE: AUGUST 2022	PROJECT # : 303992.004
DRAWN BY: EB	2 OF 2
CHECKED BY: EB	
SCALE: NTS	