



Asbestos Reassessment

St. Vincent de Paul
295 Greencedar Drive, Hamilton,
Ontario

Prepared for:

**Hamilton-Wentworth Catholic
District School Board**

90 Mulberry Street
Hamilton, Ontario, L8N 3R9

August 29, 2022

Pinchin File: 303992.004



Asbestos Reassessment

St. Vincent de Paul, 295 Greencedar Drive, Hamilton, Ontario
Hamilton-Wentworth Catholic District School Board

August 29, 2022
Pinchin File: 303992.004

Issued to: Hamilton-Wentworth Catholic District
School Board
Issued on: August 29, 2022
Pinchin File: 303992.004
Issuing Office: Hamilton, ON
Pinchin Contact: Emily Balfour, Project Manager
365.889.5147
ebalfour@pinchin.com



Hamilton-Wentworth
Catholic District School Board
Believing, Achieving, Serving

Author: Luke Thompson, ADipT.(Arch)
Project Technologist
289.922.8960
lthompson@pinchin.com

Reviewer: Damian Palus, C.E.T.
Operations Manager
289.678.0694
dpalus@pinchin.com



EXECUTIVE SUMMARY

Hamilton-Wentworth Catholic District School Board (Client) retained Pinchin Ltd. (Pinchin) to conduct an asbestos building materials reassessment at the subject building.

The objective of the reassessment was to evaluate the condition and quantity of previously reported asbestos-containing materials (ACM), and develop corrective action plans as required for the purposes of long-term management. The results of this reassessment are not intended for construction, renovation, demolition or project tendering purposes.

Summary of Recommendations

The following is a summary of significant recommendations; refer to the body of the report for detailed recommendations:

- Perform a reassessment of asbestos materials on an annual basis.
- Perform a pre-construction assessment and remove all asbestos-containing materials (ACM) prior to alteration or maintenance work if ACM may be disturbed by the work.
- Follow appropriate safe work procedures when handling or disturbing asbestos.
- Sample any presumed ACM prior to alteration or maintenance work if presumed ACM may be disturbed by the work.

This Executive Summary is subject to the same standard limitations as contained in the report and must be read in conjunction with the entire report.



Asbestos Reassessment

St. Vincent de Paul, 295 Greencedar Drive, Hamilton, Ontario
Hamilton-Wentworth Catholic District School Board

August 29, 2022
Pinchin File: 303992.004

TABLE OF CONTENTS

1.0	INTRODUCTION AND SCOPE	1
1.1	Scope of Assessment	1
2.0	BACKGROUND INFORMATION	1
2.1	Building Year of Construction	1
2.2	Existing Reports	1
3.0	FINDINGS	2
3.1	Excluded Asbestos Materials	2
3.2	Confirmed/Presumed Asbestos-Containing Materials and Confirmed Non-Asbestos Materials	3
4.0	RECOMMENDATIONS	4
4.1	General	4
4.2	Remedial Work	4
4.3	On-going Management and Maintenance	4
5.0	TERMS AND LIMITATIONS	5
6.0	REFERENCES	5

APPENDICES

APPENDIX I	Asbestos Analytical Certificates
APPENDIX II	Location List
APPENDIX III	Hazardous Materials Summary / Sample Log Report
APPENDIX IV	All Data Report
APPENDIX V	Drawings



Asbestos Reassessment

St. Vincent de Paul, 295 Greencedar Drive, Hamilton, Ontario
Hamilton-Wentworth Catholic District School Board

August 29, 2022
Pinchin File: 303992.004

1.0 INTRODUCTION AND SCOPE

Hamilton-Wentworth Catholic District School Board (Client) retained Pinchin Ltd. (Pinchin) to conduct an asbestos building materials reassessment at St. Vincent de Paul, located at 295 Greencedar Drive, Hamilton, Ontario.

The reassessment was performed by Luke Thompson, Project Technologist on May 19, 2021.

The objectives of the reassessment were to document the locations, quantities and conditions of previously identified asbestos-containing building materials and develop corrective action plans as required. This reassessment is only to be used for the purposes of long-term management and routine maintenance. The results of this reassessment are not to be used for construction, renovation, demolition or project tendering purposes.

1.1 Scope of Assessment

The objective of the reassessment was to evaluate the condition and quantity of previously reported asbestos-containing materials (ACM's), and develop corrective action plans as required.

Refer to the Asbestos Building Materials Reassessment Methodology report and Annex A dated 2022, Pinchin File 303992.004, for the methodology used during the reassessment.

2.0 BACKGROUND INFORMATION

2.1 Building Year of Construction

Item	Details
Year of Construction	1990

2.2 Existing Reports

2.2.1 Review of Previous Reports

Pinchin previously prepared the following report, which has been reviewed and relied upon as part of this assessment:

- Asbestos Assessment, St. Vincent de Paul, 295 Greencedar Drive, Hamilton, Ontario, July 2018, Prepared by Pinchin Ltd., Pinchin File: 224334.
- Asbestos Assessment, St. Vincent de Paul, 295 Greencedar Drive, Hamilton, Ontario, July 2019, Prepared by Pinchin Ltd., Pinchin File: 243241.
- Asbestos Assessment, St. Vincent de Paul, 295 Greencedar Drive, Hamilton, Ontario, May 2020 Prepared by Pinchin Ltd., Pinchin File: 272113.



Asbestos Reassessment

St. Vincent de Paul, 295 Greencedar Drive, Hamilton, Ontario
Hamilton-Wentworth Catholic District School Board

August 29, 2022
Pinchin File: 303992.004

- Asbestos Assessment, St. Vincent de Paul, 295 Greencedar Drive, Hamilton, Ontario,
June 2021 Prepared by Pinchin Ltd., Pinchin File: 286533.001

3.0 FINDINGS

The following section summarizes the findings of the reassessment and provides a general description of the asbestos materials identified. For details on quantities, assessment, sample numbers, friability, condition, and locations of asbestos materials; refer to the Hazardous Materials Summary / Sample Log Report and All Data Report in Appendices III and IV, respectively.

Previous analytical sample results have been relied upon and were included in the original asbestos assessment report completed by MTE Consultants Inc. Additional samples results where collected by Pinchin have been included in Appendix I.

3.1 Excluded Asbestos Materials

A number of materials which might contain asbestos were not sampled during this reassessment due to limitations in scope and methodology. Where present, these materials are assumed to contain asbestos until otherwise proven by sampling and analysis. These materials are not shown on the drawings in Appendix V. Excluded materials presumed to contain asbestos include:

Material	Friability
Electrical components or wiring within control centers, breakers, motors or lights, insulation on wiring	Non-friable
Vermiculite in concrete block wall cavities	Friable
Adhesives	Non-friable
Caulking and butyl seals	Non-friable
Mechanical packing, ropes and gaskets	Non-friable
Vinyl baseboards	Non-friable
Exterior cladding	Non-friable
Fire resistant doors or metal clad finishes	Non-friable
Vibration dampers on HVAC equipment	Non-friable
Ceramic tile thin-set	Non-friable



Asbestos Reassessment



St. Vincent de Paul, 295 Greencedar Drive, Hamilton, Ontario
Hamilton-Wentworth Catholic District School Board

August 29, 2022
Pinchin File: 303992.004

3.2 Confirmed/Presumed Asbestos-Containing Materials and Confirmed Non-Asbestos Materials

This section includes materials that have been confirmed asbestos-containing by sample analysis or presumed asbestos-containing by visual identification. The locations of samples from the historical assessment, performed by Pinchin, have been included on the drawings.

Material and Application	Asbestos Type/Friability	Photo
Pipes are either uninsulated or insulated with non-asbestos fibreglass or elastomeric insulation (Armaflex).	None	
Ducts are either uninsulated or insulated with non-asbestos fibreglass (foil-faced or canvas).	None	
Brown duct mastic does not contain asbestos.	None	
Mechanical equipment is either uninsulated or insulated with non-asbestos fibreglass.	None	
All ceiling tiles are presumed to be non-asbestos based on the date of manufacture determined from the age of the building (1990).	None	
Asbestos in drywall joint compound was banned in Canada in 1980. Drywall joint compound in the building was installed after 1986 (1980 plus a reasonable non-compliance period based on our experience) and is assumed to contain no asbestos.	None	
Vinyl floor tiles were determined to be non-asbestos based on previous sampling.	None (tile) None (mastic)	

Material and Application	Asbestos Type/Friability	Photo
Gold mastic is present as a sink undercoating.	Chrysotile/Non-friable	
White sink undercoating does not contain asbestos.	None	

4.0 RECOMMENDATIONS

4.1 General

Perform a detailed intrusive assessment prior to building renovation or demolition operations. The assessment should include; destructive testing (i.e. coring and/or removal of building finishes and components), sampling of other hazardous materials (lead, mercury, PCBs, mould, etc.), and materials not tested in this study (i.e. excluded asbestos materials).

4.2 Remedial Work

There is no remedial work recommended.

4.3 On-going Management and Maintenance

The following recommendations are made regarding on-going management and maintenance work involving the asbestos materials identified.



Asbestos Reassessment

St. Vincent de Paul, 295 Greencedar Drive, Hamilton, Ontario
Hamilton-Wentworth Catholic District School Board

August 29, 2022
Pinchin File: 303992.004

4.3.1 Asbestos

Maintain the Asbestos Management Program (AMP).

Perform a reassessment of asbestos materials on an annual basis.

Remove asbestos-containing materials (ACM) prior to alteration or maintenance work if ACM may be disturbed by the work. Follow appropriate asbestos precautions for the classification of work being performed.

Sample presumed ACM prior to alteration or maintenance work if the presumed ACM may be disturbed by the work.

Update the asbestos inventory report upon completion of any abatement and removal of asbestos-containing materials.

5.0 TERMS AND LIMITATIONS

This work was performed subject to the Terms and Limitations presented or referenced in the proposal for this project.

Information provided by Pinchin is intended for Client use only. Pinchin will not provide results or information to any party unless disclosure by Pinchin is required by law. Any use by a third party of reports or documents authored by Pinchin or any reliance by a third party on or decisions made by a third party based on the findings described in said documents, is the sole responsibility of such third parties. Pinchin accepts no responsibility for damages suffered by any third party as a result of decisions made or actions conducted. No other warranties are implied or expressed.

6.0 REFERENCES

The following legislation and documents were referenced in completing the assessment and this report:

1. Asbestos on Construction Projects and in Buildings and Repair Operations, Ontario Regulation 278/05.
2. Designated Substances, Ontario Regulation 490/09.

J:\303000s\0303992.000 HWCDSB,Various2022Projects,ASB,CONS\0303992.004 HWCDSB,AllFacilities,2022,ASB,REASSMT\Deliverables\Elementary\St. Vincent de Paul\Report\303992.004 St. Vincent de Paul ACM Reassessment Report HWCDSB Aug 29 2022.docx

Template: Master Report for Asbestos Reassessment, HAZ, April 23, 2019

APPENDIX I
Asbestos Analytical Certificates



Bulk Asbestos Analysis

By Polarized Light Microscopy
EPA Method: 600/R-93/116 and 600/M4-82-020



Customer: Pinchin Ltd.
6-875 Main St West
Suite 200
Hamilton, Ontario L8S 4P9
Project: St Vincent de Paul

Attn: Leslie Cantar
Emily Balfour

Lab Order ID: 51817043
Analysis ID: 51817043_PLM
Date Received: 7/6/2018
Date Reported: 7/14/2018

Sample ID	Description	Asbestos	Fibrous Components	Non-Fibrous Components	Attributes
Lab Sample ID	Lab Notes				Treatment
S0001A	Mastic, Gold,Sink Undercoating,Loc:1001, Classroom 12	3% Chrysotile		97% Other	Gold Non Fibrous Homogeneous
51817043PLM_1					Dissolved
S0001B	Mastic, Gold,Sink Undercoating,Loc:1001, Classroom 12	Not Analyzed			
51817043PLM_2					
S0001C	Mastic, Gold,Sink Undercoating,Loc:1001, Classroom 12	Not Analyzed			
51817043PLM_3					
S0002A	Mastic, White,Sink Undercoating,Loc:1001,Classroom 13	None Detected	10% Cellulose	90% Other	White Non Fibrous Homogeneous
51817043PLM_4					Dissolved
S0002B	Mastic, White,Sink Undercoating,Loc:1001,Classroom 13	None Detected	10% Cellulose	90% Other	White Non Fibrous Homogeneous
51817043PLM_5					Dissolved
S0002C	Mastic, White,Sink Undercoating,Loc:1001,Classroom 13	None Detected	10% Cellulose	90% Other	White Non Fibrous Homogeneous
51817043PLM_6					Dissolved
S0003A	Mastic,Brown,Loc:1001,Supply Room at Staff Room and Library	None Detected		100% Other	Brown Non Fibrous Homogeneous
51817043PLM_7					Dissolved
S0003B	Mastic,Brown,Loc:1001,Supply Room at Staff Room and Library	None Detected		100% Other	Brown Non Fibrous Homogeneous
51817043PLM_8					Dissolved

Disclaimer: Due to the nature of the EPA 600 method, asbestos may not be detected in samples containing low levels of asbestos. We strongly recommend that analysis of floor tiles, vermiculite, and/or heterogeneous soil samples be conducted by TEM for confirmation of "None Detected" by PLM. This report relates only to the samples tested and may not be reproduced, except in full, without the written approval of SAL. This report may not be used by the client to claim product endorsement by NVLAP or any other agency of the U.S. government. Analytical uncertainty available upon request. Scientific Analytical Institute participates in the NVLAP Proficiency Testing program. Unless otherwise noted blank sample correction was not performed. Estimated MDL is 0.1%.

Philip Szabo (21)

Analyst

Approved Signatory



Bulk Asbestos Analysis

By Polarized Light Microscopy
EPA Method: 600/R-93/116 and 600/M4-82-020



Customer: Pinchin Ltd.
6-875 Main St West
Suite 200
Hamilton, Ontario L8S 4P9

Project: St Vincent de Paul

Attn: Leslie Cantar
Emily Balfour

Lab Order ID: 51817043
Analysis ID: 51817043_PLM
Date Received: 7/6/2018
Date Reported: 7/14/2018

Sample ID	Description	Asbestos	Fibrous Components	Non-Fibrous Components	Attributes
Lab Sample ID	Lab Notes				Treatment
S0003C	Mastic, Brown, Loc: 1001, Supply Room at Staff Room and Library	None Detected		100% Other	Brown Non Fibrous Homogeneous
51817043PLM_9					Dissolved
S0004A - A	Vinyl Floor Tile And Mastic, 12"x12" Light Grey Flecks, Classroom 12	None Detected		100% Other	Gray Non Fibrous Homogeneous
51817043PLM_10	tile - ashed				Ashed, Dissolved
S0004A - B	Vinyl Floor Tile And Mastic, 12"x12" Light Grey Flecks, Classroom 12	None Detected		100% Other	Black Non Fibrous Homogeneous
51817043PLM_16	mastic				Dissolved
S0004B - A	Vinyl Floor Tile And Mastic, 12"x12" Green Flecks, Loc: 1001, Classroom 1	None Detected		100% Other	Green Non Fibrous Homogeneous
51817043PLM_11	tile - ashed				Ashed, Dissolved
S0004B - B	Vinyl Floor Tile And Mastic, 12"x12" Green Flecks, Loc: 1001, Classroom 1	None Detected		100% Other	Black Non Fibrous Homogeneous
51817043PLM_17	mastic				Dissolved
S0004C - A	Vinyl Floor Tile And Mastic, 12"x12" Taupe And Pink Flecks, Loc: 1001, Stage	None Detected		100% Other	Beige Non Fibrous Homogeneous
51817043PLM_12	tile - ashed				Ashed, Dissolved
S0004C - B	Vinyl Floor Tile And Mastic, 12"x12" Taupe And Pink Flecks, Loc: 1001, Stage	None Detected		100% Other	Yellow Non Fibrous Homogeneous
51817043PLM_18	mastic				Dissolved
S0005A - A	Vinyl Floor Tile And Mastic, 12" X 12" Purple Flecks, Loc: 1001, Computer Lab	None Detected		100% Other	Purple Non Fibrous Homogeneous
51817043PLM_13	tile - ashed				Ashed, Dissolved

Disclaimer: Due to the nature of the EPA 600 method, asbestos may not be detected in samples containing low levels of asbestos. We strongly recommend that analysis of floor tiles, vermiculite, and/or heterogeneous soil samples be conducted by TEM for confirmation of "None Detected" by PLM. This report relates only to the samples tested and may not be reproduced, except in full, without the written approval of SAL. This report may not be used by the client to claim product endorsement by NVLAP or any other agency of the U.S. government. Analytical uncertainty available upon request. Scientific Analytical Institute participates in the NVLAP Proficiency Testing program. Unless otherwise noted blank sample correction was not performed. Estimated MDL is 0.1%.

Philip Szabo (21)

Analyst

Approved Signatory



Bulk Asbestos Analysis

By Polarized Light Microscopy
EPA Method: 600/R-93/116 and 600/M4-82-020



Customer: Pinchin Ltd.
6-875 Main St West
Suite 200
Hamilton, Ontario L8S 4P9
Project: St Vincent de Paul

Attn: Leslie Cantar
Emily Balfour

Lab Order ID: 51817043
Analysis ID: 51817043_PLM
Date Received: 7/6/2018
Date Reported: 7/14/2018


Sample ID	Description	Asbestos	Fibrous Components	Non-Fibrous Components	Attributes
Lab Sample ID	Lab Notes				Treatment
S0005A - B	Vinyl Floor Tile And Mastic, 12" X 12" Purple Flecks, Loc: 1001, Computer La	None Detected		100% Other	Black Non Fibrous Homogeneous
51817043PLM_19	mastic				Dissolved
S0005B - A	Vinyl Floor Tile And Mastic, 12"x12" Pink Flecks, Loc: 1001, Classroom 1	None Detected		100% Other	Pink Non Fibrous Homogeneous
51817043PLM_14	tile - ashed				Ashed, Dissolved
S0005B - B	Vinyl Floor Tile And Mastic, 12"x12" Pink Flecks, Loc: 1001, Classroom 1	None Detected		100% Other	Black Non Fibrous Homogeneous
51817043PLM_20	mastic				Dissolved
S0005C - A	Vinyl Floor Tile And Mastic, 12"x12" Dark Grey Flecks, Loc: 1001, Principal's O	None Detected		100% Other	Gray Non Fibrous Homogeneous
51817043PLM_15	tile - ashed				Ashed, Dissolved
S0005C - B	Vinyl Floor Tile And Mastic, 12"x12" Dark Grey Flecks, Loc: 1001, Principal's O	None Detected		100% Other	Yellow Non Fibrous Homogeneous
51817043PLM_21	mastic				Dissolved

Disclaimer: Due to the nature of the EPA 600 method, asbestos may not be detected in samples containing low levels of asbestos. We strongly recommend that analysis of floor tiles, vermiculite, and/or heterogeneous soil samples be conducted by TEM for confirmation of "None Detected" by PLM. This report relates only to the samples tested and may not be reproduced, except in full, without the written approval of SAI. This report may not be used by the client to claim product endorsement by NVLAP or any other agency of the U.S. government. Analytical uncertainty available upon request. Scientific Analytical Institute participates in the NVLAP Proficiency Testing program. Unless otherwise noted blank sample correction was not performed. Estimated MDL is 0.1%.

Philip Szabo (21)

Analyst

Approved Signatory

Client: Contact: Address: Phone: Fax: Email:	Pinchin Ltd. Leslie Cantar 6-875 Main St W, Hamilton, ON 289.237.4294 905.577.6207 lcantar@pinchin.com ; ebalfour@pinchin.com	*Instructions: Use Column "B" for your contact info To See an Example Click the bottom Example Tab.	51817043 revised 
Project: Client Notes: P.O. #: Date Submitted: Analysis: TurnAroundTime:	St Vincent de Paul Stop positive on all samples. Perform gravimetric reduction on third vinyl floor tile if first two are ND. 224334 224334 St. Vincent 07-04-2018 PLM BULK EPA 600 6+ Days	12 Begin Samples with a "<<" above the first sample and end with a ">>" below the last sample. Only Enter your data on the first sheet "Sheet1" Note: Data 1 and Data 2 are optional fields that do not show up on the official report, however they will be included in the electronic data returned to you to facilitate your reintegration of the report data.	

Scientific
Analytical

Institute

 4604 Dundas Dr.
 Greensboro, NC 27407
 Phone: 336.292.3888
 Fax: 336.292.3313
 Email: lab@sailab.com

Sample Number	Data 1 (Lab use only)	Sample Description	Data 2 (Lab use only)
<<			
S0001A		Mastic, Gold, Sink Undercoating, Loc: 1001, Classroom 12	
S0001B		Mastic, Gold, Sink Undercoating, Loc: 1001, Classroom 12	
S0001C		Mastic, Gold, Sink Undercoating, Loc: 1001, Classroom 12	
S0002A		Mastic, White, Sink Undercoating, Loc: 1001, Classroom 13	
S0002B		Mastic, White, Sink Undercoating, Loc: 1001, Classroom 13	
S0002C		Mastic, White, Sink Undercoating, Loc: 1001, Classroom 13	
S0003A		Mastic, Brown, Loc: 1001, Supply Room at Staff Room and Library	
S0003B		Mastic, Brown, Loc: 1001, Supply Room at Staff Room and Library	
S0003C		Mastic, Brown, Loc: 1001, Supply Room at Staff Room and Library	
S0004A		Vinyl Floor Tile And Mastic, 12"x12" Light Grey Flecks, Classroom 12	
S0004B		Vinyl Floor Tile And Mastic, 12"x12" Green Flecks, Loc: 1001, Classroom 13	
S0004C		Vinyl Floor Tile And Mastic, 12"x12" Taupe And Pink Flecks, Loc: 1001, Stage	
S0005A		Vinyl Floor Tile And Mastic, 12" X 12" Purple Flecks, Loc: 1001, Computer Lab	
S0005B		Vinyl Floor Tile And Mastic, 12"x12" Pink Flecks, Loc: 1001, Classroom 14	
S0005C		Vinyl Floor Tile And Mastic, 12"x12" Dark Grey Flecks, Loc: 1001, Principal's Office	
>>			

Accepted ☒Rejected ☐
 Mrs. F. Lee
 17:10 3:00 P

APPENDIX II
Location List

Client:Hamilton-Wentworth Catholic District Sch
Building Name: St. Vincent de Paul
Survey Date: 2018-07-04

Site: 295 Greencedar Drive, Hamilton, ON
Last Re-Assessment: 2022-05-19

Location No.	Name or Description	Area ft ²	Floor No.	Bldg. Phase	Notes
1001	Entire Building	0		A	

APPENDIX III

Hazardous Materials Summary / Sample Log Report

Client: Hamilton-Wentworth Catholic District Sch

Site: 295 Greencedar Drive, Hamilton, ON

Building Name: St. Vincent de Paul

Survey Date: 2018-07-04

HAZMAT	Sample No	System/Component/Material/Sample Description	Locations	Bldg. Phase	LF	SF	EA	%	Type	Positive	Friability
Asbestos	S0001	Other Sink Mastic, Gold Sink Undercoating	1001	A	0	0	0	100	Chrysotile	Yes	NF
Asbestos	S0002	Other Mastic, White Sink Undercoating	1001	A	0	0	0	100	None Detected	No	
Asbestos	S0003	Duct Mastic Brown	1001	A	0	0	0	100	None Detected	No	
Asbestos	S0004	Floor Vinyl Floor Tile And Mastic 12"x12" Light Grey Flecks, Green Flecks, Taupe And Pink Flecks	1001	A	0	0	0	100	None Detected	No	
Asbestos	S0005	Floor Vinyl Floor Tile And Mastic 12"x12" Purple Flecks, Pink Flecks, Dark Grey Flecks	1001	A	0	0	0	100	None Detected	No	
Asbestos	V9500	Floor Adhesive/mastic Vinyl Baseboards	1001	A	0	0	0	100	Presumed Asbestos	Yes	NF
Asbestos	V9500	Mechanical Equipment Gasket	1001	A	0	0	0	100	Presumed Asbestos	Yes	NF
Asbestos	V9500	Other Window, Door Caulking	1001	A	0	0	0	100	Presumed Asbestos	Yes	NF
Asbestos	V0000	Ceiling Acoustic Tile Ceiling Tiles (lay-in) All (1990 Construction)	1001	A	0	0	0	100	Non Asbestos	No	
Asbestos	V0000	Floor Vinyl Floor Tile And Mastic 12"x12" Dark Grey Flecks (sample S0005c)	1001	A	0	0	0	100	Non Asbestos	No	
Asbestos	V0000	Floor Vinyl Floor Tile And Mastic 12"x12" Green Flecks (sample S0004b)	1001	A	0	0	0	100	Non Asbestos	No	
Asbestos	V0000	Floor Vinyl Floor Tile And Mastic 12"x12" Pink Flecks (sample S0005b)	1001	A	0	0	0	100	Non Asbestos	No	
Asbestos	V0000	Floor Vinyl Floor Tile And Mastic 12"x12" Taupe And Pink Flecks (sample S0004c)	1001	A	0	0	0	100	Non Asbestos	No	
Asbestos	V0000	Wall Drywall And Joint Compound (1990 Construction)	1001	A	0	0	0	100	Non Asbestos	No	

Legend:

Sample number	
S####	Asbestos sample collected
L####	Paint sample collected
P####	PCB sample collected
M####	Mould sample collected
V####	Material visually similar to numbered sample collected
V0000	Known non Hazardous Material
V9000	Material is visually identified as Hazardous Material
V9500	Material is presumed to be Hazardous Material
[Loc. No.]	Abated Material

Units	
SF	Square feet
LF	Linear feet
EA	Each
%	Percentage

NF	Non Friable material.
F	Friable material
PF	Potentially Friable material

APPENDIX IV
All Data Report

ALL DATA REPORT

Client: Hamilton-Wentworth Catholic District Sch
Location: #1001 : Entire Building
Survey Date: 2018-07-04

Site: Elementary
Floor:

Building Name: St. Vincent de Paul
Room #:
Last Re-Assessment: 2022-05-19

Area (sqft): 0

ASBESTOS																
System	Component	Material	Item	Covering	A*	V*	AP*	Good	Fair	Poor	Unit	Sample	Asbestos Type	Amount	Hazard	Friable
Ceiling	Acoustic Tile	Ceiling Tiles (lay-in), All (1990 construction)			C	Y		100			%	V0000	Non-Asbestos		None	
Duct		Mastic, Brown			C	N		100			%	S0003	None Detected	N.D.	None	
Floor		Concrete (poured)			A	Y										
Floor		Vinyl Floor Tile and Mastic, 12"x12" light grey flecks			A	Y		100			%	S0004	None Detected	N.D.	None	
Floor		Vinyl Floor Tile and Mastic, 12"x12" pink flecks (sample S0005B)			A	Y		100			%	V0000	Non-Asbestos		None	
Floor		Vinyl Floor Tile and Mastic, 12"x12" taupe and pink flecks (sample S0004C)			A	Y		100			%	V0000	Non-Asbestos		None	
Floor		Vinyl Floor Tile and Mastic, 12"x12" green flecks (sample S0004B)			A	Y		100			%	V0000	Non-Asbestos		None	
Floor		Vinyl Floor Tile and Mastic, 12"x12" dark grey flecks (sample S0005C)			A	Y		100			%	V0000	Non-Asbestos		None	
Floor		Vinyl Floor Tile and Mastic, 12" x 12" purple flecks			A	Y		100			%	S0005	None Detected	N.D.	None	
Floor		Carpet			A	Y										
Floor		Terrazzo			A	Y										
Floor		Laminate			A	Y										
Floor		Adhesive/mastic, vinyl baseboards			D	N		100(7)			%	V9500	Presumed Asbestos		Presumed Asbestos	NF
Mechanical Equipment		Gasket			B	Y		100(7)			%	V9500	Presumed Asbestos		Presumed Asbestos	NF
Other		Mastic, White, Sink undercoating			A	Y		100			%	S0002	None Detected	N.D.	None	
Other	Door	Caulking			A	Y		100(7)			%	V9500	Presumed Asbestos		Presumed Asbestos	NF
Other	Sink	Mastic, Gold, Sink undercoating			A	Y		100(7)			%	S0001	Chrysotile	0.5-5%	Confirmed Asbestos	NF
Other	Window	Caulking			A	Y		100(7)			%	V9500	Presumed Asbestos		Presumed Asbestos	NF
Piping		Fibreglass			C	Y										
Piping	Rain Water Leader	Metal		Fibreglass	A	Y										
Piping	Rain Water Leader	Metal		Fibreglass	C	Y										
Structure		Steel			C	Y										
Wall		Drywall and joint compound, (1990 construction)			A	Y		100			%	V0000	Non-Asbestos		None	
Wall		Masonry		Paint	A	Y										
Wall		Ceramic Tiles			A	Y										
Wall		Glass			A	Y										

Legend:



Sample number		Units		Other	
S####	Asbestos sample collected	SF	Square feet	A	Access
V####	Material visually similar to numbered sample collected	LF	Linear feet	V	Visible
V0000	Known non-asbestos material	EA	Each	AP	Air Plenum
V9000	Visually identified as an asbestos material	%	Percentage	F	Friable material
V9500	Material is presumed to be an asbestos material			NF	Non Friable material
				PF	Potentially Friable material

Access	
A	Accessible to all building occupants
B	Accessible to maintenance and operations staff without a ladder
C	Accessible to maintenance and operations staff with a ladder. Also rarely entered, locked areas
D	Not normally accessible

Condition	
Good	No visible damage or deterioration
Fair	Minor, repairable damage, cracking, delamination or deterioration
Poor	Irreparable damage or deterioration with exposed and missing material

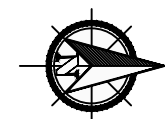
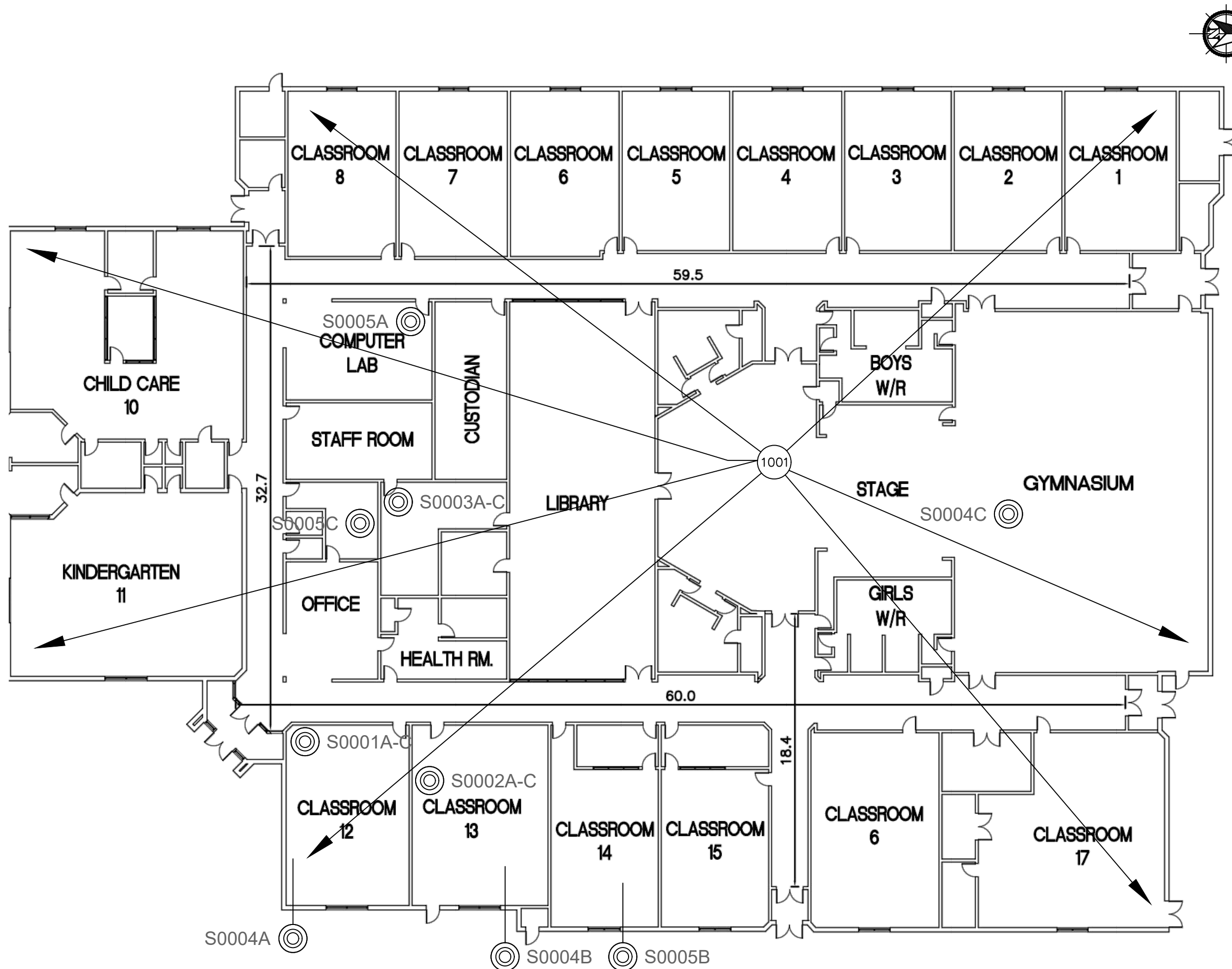
Visible	
Y	The material is visible when standing on the floor of the room, without the removal or opening of other building components (e.g. ceiling tiles or access panels).
N	The material is not visible to view when standing on the floor of the room and requires the removal of a building component (e.g. ceilings tiles or access panels) to view and access. Includes rarely entered crawlspaces, attic spaces, etc. Observations will be limited to the extent visible from the access points.

Air Plenum	
Yes or No	The material is in a return air plenum or in a direct airstream or there is evidence of air erosion (e.g. duct for heating or cooling blowing directly on or across an ACM). This field is only completed where Air Plenum consideration is required by regulation.

Colour Coding	
	The material is known to contain regulated concentrations of asbestos; either by analytical results or visible identification (use of the V9000 code).
	The material is presumed to contain asbestos; based on visual appearances; typically a material known to historically contain asbestos; however, not sampled due to limited access or the destructive nature of the sampling.

Action					
(1)	Clean up of ACM Debris	(2)	Precautions for Access Which may Disturb ACM Debris	(3)	ACM removal
(4)	Precautions for Work Which may Disturb ACM in Poor Condition	(5)	Proactive ACM removal (Minimum repair required for fair condition)	(6)	ACM repair
(7)	Management program and surveillance				

APPENDIX V
Drawings



905-577-6206 www.pinchin.com

LEGEND:

- (X) LOCATION NUMBER
- (C) ASBESTOS BULK SAMPLE

ASBESTOS-CONTAINING GOLD MASTIC UNDERCOATING IS PRESENT SPORADICALLY ON SINKS WITHIN THE BUILDING.

BASE PLAN PROVIDED BY CLIENT.

CLIENT:



Hamilton-Wentworth
Catholic District School Board
Believing. Achieving. Serving

LOCATION:

ST. VINCENT DE PAUL
295 GRENCEDAR DRIVE
HAMILTON, ONTARIO

TITLE:

ASBESTOS REASSESSMENT
FLOOR LEVEL 1

DATE:

AUGUST 2022

PROJECT #:

303992.004

DRAWN BY:

EB

CHECKED BY:

EB

SCALE:

NTS

DRAWING:

1 OF 1