



Asbestos Reassessment

St. Patrick
24 Smith Avenue, Hamilton,
Ontario

Prepared for:

**Hamilton-Wentworth Catholic
District School Board**

90 Mulberry Street
Hamilton, Ontario, L8N 3R9

August 30, 2022

Pinchin File: 303992.004



Asbestos Reassessment

St. Patrick, 24 Smith Avenue, Hamilton, Ontario
Hamilton-Wentworth Catholic District School Board

August 30, 2022
Pinchin File: 303992.004

Issued to: Hamilton-Wentworth Catholic District
School Board
Issued on: August 30, 2022
Pinchin File: 303992.004
Issuing Office: Hamilton, ON
Pinchin Contact: Emily Balfour, Project Manager
365.889.5147
ebalfour@pinchin.com



Author: Luke Thompson, ADip.T.(Arch)
Project Technologist
289.922.8960
lthompson@pinchin.com

Reviewer: Damian Palus, C.E.T.
Operations Manager
289.678.0694
dpalus@pinchin.com



EXECUTIVE SUMMARY

Hamilton-Wentworth Catholic District School Board (Client) retained Pinchin Ltd. (Pinchin) to conduct an asbestos building materials reassessment at the subject building.

The objective of the reassessment was to evaluate the condition and quantity of previously reported asbestos-containing materials (ACM), and develop corrective action plans as required for the purposes of long-term management. The results of this reassessment are not intended for construction, renovation, demolition or project tendering purposes.

Summary of Recommendations

The following is a summary of significant recommendations; refer to the body of the report for detailed recommendations:

- Perform a reassessment of asbestos materials on an annual basis.
- Perform a pre-construction assessment and remove all asbestos-containing materials (ACM) prior to alteration or maintenance work if ACM may be disturbed by the work.
- Follow appropriate safe work procedures when handling or disturbing asbestos.
- Sample any presumed ACM prior to alteration or maintenance work if presumed ACM may be disturbed by the work.

This Executive Summary is subject to the same standard limitations as contained in the report and must be read in conjunction with the entire report.



Asbestos Reassessment

St. Patrick, 24 Smith Avenue, Hamilton, Ontario
Hamilton-Wentworth Catholic District School Board

August 30, 2022
Pinchin File: 303992.004

TABLE OF CONTENTS

1.0	INTRODUCTION AND SCOPE	1
1.1	Scope of Assessment	1
2.0	BACKGROUND INFORMATION	1
2.1	Building Year of Construction and Additions	1
2.2	Existing Reports.....	1
2.3	Inaccessible Locations	2
3.0	FINDINGS	2
3.1	Excluded Asbestos Materials	2
3.2	Confirmed/Presumed Asbestos-Containing Materials and Confirmed Non-Asbestos Materials	3
4.0	RECOMMENDATIONS.....	8
4.1	General	8
4.2	Remedial Work	8
4.3	On-going Management and Maintenance	9
5.0	TERMS AND LIMITATIONS	9
6.0	REFERENCES.....	9

APPENDICES

APPENDIX I	Asbestos Analytical Certificates
APPENDIX II	Location List
APPENDIX III	Hazardous Materials Summary / Sample Log Report
APPENDIX IV	All Data Report
APPENDIX V	Drawings



Asbestos Reassessment

St. Patrick, 24 Smith Avenue, Hamilton, Ontario
Hamilton-Wentworth Catholic District School Board

August 30, 2022
Pinchin File: 303992.004

1.0 INTRODUCTION AND SCOPE

Hamilton-Wentworth Catholic District School Board (Client) retained Pinchin Ltd. (Pinchin) to conduct an asbestos building materials reassessment at St. Patrick (formerly St. Brigid) located at 24 Smith Avenue, Hamilton, Ontario.

The reassessment was performed by Luke Thompson, Project Technologist on May 30, 2022.

The objectives of the reassessment were to document the locations, quantities and conditions of previously identified asbestos-containing building materials and develop corrective action plans as required. This reassessment is only to be used for the purposes of long-term management and routine maintenance. The results of this reassessment are not to be used for construction, renovation, demolition or project tendering purposes.

1.1 Scope of Assessment

The objective of the reassessment was to evaluate the condition and quantity of previously reported asbestos-containing materials (ACM's), and develop corrective action plans as required.

Refer to the Asbestos Building Materials Reassessment Methodology report and Annex A dated 2022, Pinchin File 303992.004, for the methodology used during the reassessment.

2.0 BACKGROUND INFORMATION

2.1 Building Year of Construction and Additions

Item	Details
Year of Construction	1959
Year(s) of Additions	1951, 1965, 1967

2.2 Existing Reports

2.2.1 Review of Previous Reports

Pinchin previously prepared the following report, which has been reviewed and relied upon as part of this assessment:

- Asbestos Assessment, St. Brigid, 24 Smith Avenue, Hamilton, Ontario, September 2018, Prepared by Pinchin Ltd., Pinchin File: 224334.
- Asbestos Reassessment, St. Patrick, 24 Smith Avenue, Hamilton, Ontario, September 2019, Prepared by Pinchin Ltd., Pinchin File: 243241.



Asbestos Reassessment

St. Patrick, 24 Smith Avenue, Hamilton, Ontario
Hamilton-Wentworth Catholic District School Board

August 30, 2022
Pinchin File: 303992.004

- Asbestos Reassessment, St. Patrick, 24 Smith Avenue, Hamilton, Ontario, June 2020
Prepared by Pinchin Ltd., Pinchin File: 272113.
- Asbestos Reassessment, St. Patrick, 24 Smith Avenue, Hamilton, Ontario, July 2021
Prepared by Pinchin Ltd., Pinchin File: 286533.001

2.3 Inaccessible Locations

The following rooms or areas, were not accessible to the surveyor and are therefore not included in the report:

Location and Location #	Reason
Classroom 6 (Location 1011)	Locked

3.0 FINDINGS

The following section summarizes the findings of the reassessment and provides a general description of the asbestos materials identified. For details on quantities, assessment, sample numbers, friability, condition, and locations of asbestos materials; refer to the Hazardous Materials Summary / Sample Log Report and All Data Report in Appendices III and IV, respectively.

Previous analytical sample results have been relied upon and were included in the original asbestos assessment report completed by MTE Consultants Inc. Additional samples results where collected by Pinchin have been included in Appendix I.

3.1 Excluded Asbestos Materials


A number of materials which might contain asbestos were not sampled during this reassessment due to limitations in scope and methodology. Where present, these materials are assumed to contain asbestos until otherwise proven by sampling and analysis. These materials are not shown on the drawings in Appendix V. Excluded materials presumed to contain asbestos include:


Material	Friability
Roofing, felts and tar	Non-friable
Concrete floor levelling compound	Non-friable
Electrical components or wiring within control centers, breakers, motors or lights, insulation on wiring	Non-friable
Vermiculite in concrete block wall cavities	Friable




Material	Friability
Adhesives and duct mastics	Non-friable
Caulking and butyl seals	Non-friable
Fibre reinforced paints and coatings	Non-friable
Paper products	Non-friable
Soffit and fascia boards	Non-friable
Mechanical packing, ropes and gaskets	Non-friable
Vinyl baseboards	Non-friable
Exterior cladding	Non-friable
Fire resistant doors or metal clad finishes	Non-friable
Vibration dampers on HVAC equipment	Non-friable
Ceramic tile thin-set	Non-friable

3.2 Confirmed/Presumed Asbestos-Containing Materials and Confirmed Non-Asbestos Materials


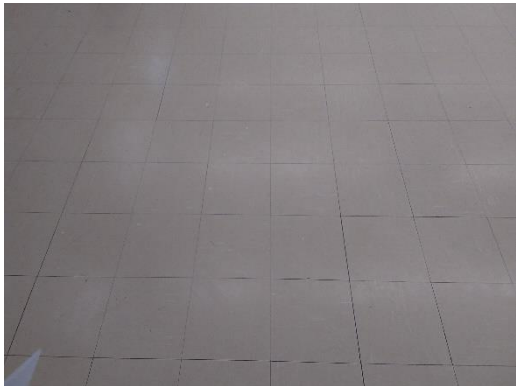

This section includes materials that have been confirmed asbestos-containing by sample analysis or presumed asbestos-containing by visual identification. Refer to the drawings in Appendix V for the locations of confirmed and presumed ACMs indicated via hatching or symbols. The locations of samples from the historical assessments, performed by Pinchin, have been included on the drawings.


Material and Application	Asbestos Type/Friability	Photo
Parging cement is present on pipe fittings (elbows, valves, tees, hangers etc.)	Chrysotile/Friable	

Material and Application	Asbestos Type/Friability	Photo
Remaining pipes are either uninsulated or insulated with non-asbestos fibreglass or elastomeric insulation (Armaflex).	None	
Ducts are either uninsulated or insulated with non-asbestos fibreglass (foil-faced or canvas).	None	
Mechanical equipment is either uninsulated or insulated with non-asbestos fibreglass.	None	
All ceiling tiles are determined to be non-asbestos based on sample analysis or presumed to be non-asbestos based on the date of manufacture determined from the date stamp applied to the top of the tiles or the age of the materials determined from the age of the building renovation.	None	
Non-asbestos texture finish is present on concrete.	None	
Smooth plaster present on walls ceilings does not contain asbestos.	None	
Non-asbestos drywall joint compound is present on wall and ceiling finishes.	None	
Transite board is present as a ceiling finish underneath stairs.	Presumed/Non-friable	

Material and Application	Asbestos Type/Friability	Photo
Vinyl floor tiles, 12"x12", grey multi-fleck, are present.	Presumed/Non-friable (tile) Presumed/Non-friable (mastic)	
Vinyl floor tiles, 12"x12", light grey multi-fleck, are present.	Presumed/Non-friable (tile) Presumed/Non-friable (mastic)	
Vinyl floor tiles, 12"x12", white with multi-coloured streaks, are present.	Presumed/Non-friable (tile) Presumed/Non-friable (mastic)	

Material and Application	Asbestos Type/Friability	Photo
Vinyl floor tiles, 12"x12", grey and white fleck, are present.	Presumed/Non-friable (tile) Presumed/Non-friable (mastic)	
Vinyl floor tiles, 12"x12", brown with beige fleck, are present.	Presumed/Non-friable (tile) Presumed/Non-friable (mastic)	
Vinyl floor tiles, 9"x9" grey and white are present.	Presumed/Non-friable (tile) Presumed/Non-friable (mastic)	
Vinyl floor tiles, 9"x9" brown with beige streaks are present.	Presumed/Non-friable (tile) Presumed/Non-friable (mastic)	

Material and Application	Asbestos Type/Friability	Photo
Vinyl floor tiles, 9"x9" beige with white streaks are present.	Presumed/Non-friable (tile) Presumed/Non-friable (mastic)	
Vinyl floor tiles, 9"x9" green with white are present.	Presumed/Non-friable (tile) Presumed/Non-friable (mastic)	
Vinyl floor tiles, 9"x9" brown with white brush are present.	Presumed/Non-friable (tile) Presumed/Non-friable (mastic)	

Material and Application	Asbestos Type/Friability	Photo
Vinyl floor tiles, 9"x9" green with white brush are present.	Presumed/Non-friable (tile) Presumed/Non-friable (mastic)	
Remaining vinyl floor tiles were presumed to be non-asbestos based on historical knowledge of the date of installation. Mastic underneath new floor tiles is presumed to contain asbestos until sampling proves otherwise.	None (tile) Presumed/Non-friable (mastic)	
A fire door is present in the Boiler Room (Location 1005). Interior components are presumed to contain asbestos.	Presumed/Friable	
Glazing putty is present in between glass and frames on exterior windows throughout the building.	Chrysotile/Non-friable	

4.0 RECOMMENDATIONS

4.1 General

Perform a detailed intrusive assessment prior to building renovation or demolition operations. The assessment should include; destructive testing (i.e. coring and/or removal of building finishes and components), sampling of other hazardous materials (lead, mercury, PCBs, mould, etc.), and materials not tested in this study (i.e. excluded asbestos materials).

4.2 Remedial Work

Remedial work is not recommended.



4.3 On-going Management and Maintenance

The following recommendations are made regarding on-going management and maintenance work involving the asbestos materials identified.

4.3.1 Asbestos

Maintain the Asbestos Management Program (AMP).

Perform a reassessment of asbestos materials on an annual basis.

Remove asbestos-containing materials (ACM) prior to alteration or maintenance work if ACM may be disturbed by the work. Follow appropriate asbestos precautions for the classification of work being performed.

Sample presumed ACM prior to alteration or maintenance work if the presumed ACM may be disturbed by the work.

Update the asbestos inventory report upon completion of any abatement and removal of asbestos-containing materials.

5.0 TERMS AND LIMITATIONS

This work was performed subject to the Terms and Limitations presented or referenced in the proposal for this project.

Information provided by Pinchin is intended for Client use only. Pinchin will not provide results or information to any party unless disclosure by Pinchin is required by law. Any use by a third party of reports or documents authored by Pinchin or any reliance by a third party on or decisions made by a third party based on the findings described in said documents, is the sole responsibility of such third parties. Pinchin accepts no responsibility for damages suffered by any third party as a result of decisions made or actions conducted. No other warranties are implied or expressed.

6.0 REFERENCES

The following legislation and documents were referenced in completing the assessment and this report:

1. Asbestos on Construction Projects and in Buildings and Repair Operations, Ontario Regulation 278/05.
2. Designated Substances, Ontario Regulation 490/09.

J:\303000s\0303992.000 HWCDSD,Various2022Projects,ASB,CONS\0303992.004 HWCDSD,AllFacilities,2022,ASB,REASSMT\Deliverables\Elementary\St. Patrick\Report\0303992.004 St. Patrick ACM Reassessment Report HWCDSD Aug 30 2022.docx

Template: Master Report for Asbestos Reassessment, HAZ, April 23, 2019

APPENDIX I
Asbestos Analytical Certificates



Bulk Asbestos Analysis

By Polarized Light Microscopy
EPA Method: 600/R-93/116 and 40 CFR, Part 763, Subpart E,
App.E



Customer: Pinchin Ltd.
6-875 Main St West
Suite 200
Hamilton, Ontario L8S 4P9

Attn: Emily Balfour
Michael Maiorana

Project: 230748, 24 Smith Ave, Hamilton, Ontario, Hamilton-Wentworth Catholic School
Board, St. Patrick

Lab Order ID: 71920494
Analysis ID: 71920494_PLM
Date Received: 8/5/2019
Date Reported: 8/13/2019

Sample ID	Description	Asbestos	Fibrous Components	Non-Fibrous Components	Attributes
Lab Sample ID	Lab Notes				Treatment
S0001A - A	Smooth plaster wall, Women's Washroom, Location 3011	None Detected		100% Other	White Non Fibrous Heterogeneous
71920494PLM_1	finish				Crushed
S0001A - B	Smooth plaster wall, Women's Washroom, Location 3011	None Detected		100% Other	Gray Non Fibrous Heterogeneous
71920494PLM_15	base				Crushed
S0001B - A	Smooth plaster wall, Storage, Location 3018	None Detected		100% Other	White Non Fibrous Heterogeneous
71920494PLM_2	finish				Crushed
S0001B - B	Smooth plaster wall, Storage, Location 3018	None Detected		100% Other	Gray Non Fibrous Heterogeneous
71920494PLM_16	base				Crushed
S0001C - A	Smooth plaster wall, Office, Location 3008	None Detected		100% Other	White Non Fibrous Heterogeneous
71920494PLM_3	finish				Crushed
S0001C - B	Smooth plaster wall, Office, Location 3008	None Detected		100% Other	Gray Non Fibrous Heterogeneous
71920494PLM_17	base				Crushed
S0001D - A	Smooth plaster wall, Office/Reception, Location 2008	None Detected		100% Other	White Non Fibrous Heterogeneous
71920494PLM_4	finish				Crushed
S0001D - B	Smooth plaster wall, Office/Reception, Location 2008	None Detected		100% Other	Gray Non Fibrous Heterogeneous
71920494PLM_18	base				Crushed

Disclaimer: Due to the nature of the EPA 600 method, asbestos may not be detected in samples containing low levels of asbestos. We strongly recommend that analysis of floor tiles, vermiculite, and/or heterogeneous soil samples be conducted by TEM for confirmation of "None Detected" by PLM. This report relates only to the samples tested and may not be reproduced, except in full, without the written approval of SAI. This report may not be used by the client to claim product endorsement by NVLAP or any other agency of the U.S. government. Analytical uncertainty available upon request. Scientific Analytical Institute participates in the NVLAP Proficiency Testing program. Unless otherwise noted blank sample correction was not performed. Estimated MDL is 0.1%.

Jalen Moore (22)

Analyst

Approved Signatory



Bulk Asbestos Analysis

By Polarized Light Microscopy
EPA Method: 600/R-93/116 and 40 CFR, Part 763, Subpart E,
App.E



Customer: Pinchin Ltd.
6-875 Main St West
Suite 200
Hamilton, Ontario L8S 4P9

Attn: Emily Balfour
Michael Maiorana

Project: 230748, 24 Smith Ave, Hamilton, Ontario, Hamilton-Wentworth Catholic School
Board, St. Patrick

Lab Order ID: 71920494
Analysis ID: 71920494_PLM
Date Received: 8/5/2019
Date Reported: 8/13/2019

Sample ID	Description	Asbestos	Fibrous Components	Non-Fibrous Components	Attributes
Lab Sample ID	Lab Notes				Treatment
S0001E - A	Smooth plaster wall, Book Room, Location 1008	None Detected		100% Other	White Non Fibrous Heterogeneous
71920494PLM_5	finish				Crushed
S0001E - B	Smooth plaster wall, Book Room, Location 1008	None Detected		100% Other	Gray Non Fibrous Heterogeneous
71920494PLM_19	base				Crushed
S0002A - A	Smooth plaster wall, Storage, Location 3027	None Detected		100% Other	White Non Fibrous Heterogeneous
71920494PLM_6	finish				Crushed
S0002A - B	Smooth plaster wall, Storage, Location 3027	None Detected		100% Other	Gray Non Fibrous Heterogeneous
71920494PLM_20	base				Crushed
S0002B - A	Smooth plaster column, Staff Room, Location 2004	None Detected		100% Other	White Non Fibrous Heterogeneous
71920494PLM_7	finish				Crushed
S0002B - B	Smooth plaster column, Staff Room, Location 2004	None Detected		97% Other 3% Vermiculite	Gray Non Fibrous Heterogeneous
71920494PLM_21	base				Crushed
S0002C - A	Smooth plaster wall, Classroom, Location 1015	None Detected		100% Other	White Non Fibrous Heterogeneous
71920494PLM_8	finish				Crushed
S0002C - B	Smooth plaster wall, Classroom, Location 1015	None Detected		100% Other	Gray Non Fibrous Heterogeneous
71920494PLM_22	base				Crushed

Disclaimer: Due to the nature of the EPA 600 method, asbestos may not be detected in samples containing low levels of asbestos. We strongly recommend that analysis of floor tiles, vermiculite, and/or heterogeneous soil samples be conducted by TEM for confirmation of "None Detected" by PLM. This report relates only to the samples tested and may not be reproduced, except in full, without the written approval of SAI. This report may not be used by the client to claim product endorsement by NVLAP or any other agency of the U.S. government. Analytical uncertainty available upon request. Scientific Analytical Institute participates in the NVLAP Proficiency Testing program. Unless otherwise noted blank sample correction was not performed. Estimated MDL is 0.1%.

Jalen Moore (22)

Analyst

Approved Signatory



Bulk Asbestos Analysis

By Polarized Light Microscopy
EPA Method: 600/R-93/116 and 40 CFR, Part 763, Subpart E,
App.E



Customer: Pinchin Ltd.
6-875 Main St West
Suite 200
Hamilton, Ontario L8S 4P9

Attn: Emily Balfour
Michael Maiorana

Project: 230748, 24 Smith Ave, Hamilton, Ontario, Hamilton-Wentworth Catholic School
Board, St. Patrick

Lab Order ID: 71920494
Analysis ID: 71920494_PLM
Date Received: 8/5/2019
Date Reported: 8/13/2019

Sample ID	Description	Asbestos	Fibrous Components	Non-Fibrous Components	Attributes
Lab Sample ID	Lab Notes				Treatment
S0003A	Drywall joint compound on wall, Staff Room, Location 2004	None Detected		100% Other	White Non Fibrous Heterogeneous
71920494PLM_9					Crushed
S0003B	Drywall joint compound on wall, Staff Room, Location 2004	None Detected		100% Other	White Non Fibrous Heterogeneous
71920494PLM_10					Crushed
S0003C	Drywall joint compound on wall, Staff Room, Location 2004	None Detected		100% Other	White Non Fibrous Heterogeneous
71920494PLM_11					Crushed
S0004A	Textured plaster ceiling, Corridor, Location 2018	None Detected		100% Other	White Non Fibrous Heterogeneous
71920494PLM_12					Crushed
S0004B	Textured plaster ceiling, Stairwell, Location 2017	None Detected		100% Other	White Non Fibrous Heterogeneous
71920494PLM_13					Crushed
S0004C	Textured plaster ceiling, Stairwell, Location 2017	None Detected		100% Other	White Non Fibrous Heterogeneous
71920494PLM_14					Crushed

Disclaimer: Due to the nature of the EPA 600 method, asbestos may not be detected in samples containing low levels of asbestos. We strongly recommend that analysis of floor tiles, vermiculite, and/or heterogeneous soil samples be conducted by TEM for confirmation of "None Detected" by PLM. This report relates only to the samples tested and may not be reproduced, except in full, without the written approval of SAI. This report may not be used by the client to claim product endorsement by NVLAP or any other agency of the U.S. government. Analytical uncertainty available upon request. Scientific Analytical Institute participates in the NVLAP Proficiency Testing program. Unless otherwise noted blank sample correction was not performed. Estimated MDL is 0.1%.

Jalen Moore (22)


Analyst



Approved Signatory

71920494

Version 1-15-2012

Client:	Pinchin Ltd.	*Instructions: Use Column "B" for your contact info To See an Example Click the bottom Example Tab. Enter samples between "<<" and ">>" Begin Samples with a "<<" above the first sample and end with a ">>" below the last sample. Only Enter your data on the first sheet "Sheet1"	Invoice to: ap@pinchin.com
Contact:	Emily Balfour		
Address:	6-875 Main Street West, Suite 200, Hamilton ON L8S 4P9		
Phone:	905-577-6206		
Fax:	905-577-6207		
Email:	ebalfour@pinchin.com mmaiorana@pinchin.com	 Scientific Analytical Institute 4604 Dundas Dr. Greensboro, NC 27407 Phone: 336.292.3888 Fax: 336.292.3313 Email: lab@sailab.com	
Project:	230748, 24 Smith Ave, Hamilton, Ontario, Hamilton-Wentworth Catholic School Board, St. Patrick		
Client Notes:			
P.O. #.	230748		
Date Submitted:	7/31/2019		
Analysis:	PLM - Stop Positive EXCEPT for S0001 & S0002		
TurnAroundTime:	5 Days	Note: Data 1 and Data 2 are optional fields that do not show up on the official report, however they will be included in the electronic data returned to you to facilitate your reintegration of the report data.	

Sample Number	Data 1 (Lab use only)	Sample Description	Data 2 (Lab use only)
<<			
S0001A		Smooth plaster wall, Women's Washroom, Location 3011	
S0001B		Smooth plaster wall, Storage, Location 3018	
S0001C		Smooth plaster wall, Office, Location 3008	
S0001D		Smooth plaster wall, Office/Reception, Location 2008	
S0001E		Smooth plaster wall, Book Room, Location 1008	
S0002A		Smooth plaster wall, Storage, Location 3027	
S0002B		Smooth plaster column, Staff Room, Location 2004	
S0002C		Smooth plaster wall, Classroom, Location 1015	
S0003A		Drywall joint compound on wall, Staff Room, Location 2004	
S0003B		Drywall joint compound on wall, Staff Room, Location 2004	
S0003C		Drywall joint compound on wall, Staff Room, Location 2004	
S0004A		Textured plaster ceiling, Corridor, Location 2018	

Accepted ☒Rejected ☐

Saunderson 8/5

10:30a

»

Textured plaster ceiling, Stairwell, Location 2017



Pinchin Ltd. Asbestos Laboratory *Certificate of Analysis*

Project Name:	Hamilton-Wentworth Catholic School Board, St. Patrick Elementary School, 24 Smith Avenue, Hamilton, Ontario		
Project No.:	0272113.000		
Prepared For:	E. Balfour / M. Maiorana		
Lab Reference No.:	b230660	Date Received:	May 21, 2020
Analyst(s):	K. Cockburn	Date Analyzed:	June 1, 2020
		# Samples submitted:	3
		# Phases analyzed:	1

Method of Analysis:

EPA 600/R-93/116 - Method for the Determination of Asbestos in Bulk Building Materials dated July, 1993

Bulk samples are checked visually and scanned under a stereomicroscope. Slides are prepared and observed under a Polarized Light Microscope (PLM) at magnifications of 40X, 100X or 400X as appropriate. Asbestos fibres are identified by a combination of morphology, colour, refractive index, extinction, sign of elongation, birefringence and dispersion staining colours. A visual estimate is made of the percentage of asbestos present. A reported concentration of less than (<) the regulatory threshold (see chart below) indicates the presence of confirmed asbestos in trace quantities, limited to only a few fibres or fibre bundles in an entire sample. This method complies with provincial regulatory requirements where applicable. Multiple phases within a sample are analyzed and reported separately.

All bulk samples submitted to this laboratory for asbestos analysis are retained for a minimum of three months. Samples may be retrieved, upon request, for re-examination at any time during that period.

The Pinchin Ltd. Mississauga asbestos laboratory is accredited by the National Institute of Standards and Technology, National Voluntary Laboratory Accreditation Program (NVLAP Lab Code 101270-0) for the 'EPA – 40 CFR Appendix E to Subpart E of Part 763, Interim Method of the Determination of Asbestos in Bulk Insulation Samples,' and the 'EPA 600/R-93/116: Method for the Determination of Asbestos in Bulk Building Materials'; and meets all requirements of ISO/IEC 17025:2005.

This report relates only to the items tested.

NOTE: *This test report may not be reproduced, except in full, without the written approval of the laboratory. The client may not use this report to claim product endorsement by NVLAP or any agency of the U.S. Government. This report is valid only when signed in blue ink by the analyst. Vinyl asbestos floor tiles contain very fine fibres of asbestos and may be missed by some laboratories using the PLM method. Internal verification studies performed by Pinchin indicate that the chance of missing asbestos in floor tiles is no higher than about 2%. The vinyl tile study and laboratory documentation on measurement uncertainty is available upon request. The analysis of dust samples by PLM cannot be used as an indicator of past or present airborne asbestos fibre levels.*



Pinchin Ltd. Asbestos Laboratory
Certificate of Analysis

Project Name: Hamilton-Wentworth Catholic School Board,
St. Patrick Elementary School, 24 Smith Avenue, Hamilton, Ontario
Project No.: 0272113.000
Prepared For: E. Balfour / M. Maiorana
Lab Reference No.: b230660
Date Analyzed: June 1, 2020

BULK SAMPLE ANALYSIS

SAMPLE IDENTIFICATION	SAMPLE DESCRIPTION	% COMPOSITION (VISUAL ESTIMATE)			
		ASBESTOS		OTHER	
S0005A Parging cement, Classroom 1, Location 1001	Homogeneous, grey, soft, parging cement.	Chrysotile	25-50%	Non-Fibrous Material	50-75%
Comments:	Cotton fabric reinforcement is present on the surface of this sample.				
S0005B Parging cement, Corridor, Location 1004				Not Analyzed	
Comments:	Analysis was stopped due to a previous positive result.				
S0005C Parging cement, Girl's Washroom, Location 2013				Not Analyzed	
Comments:	Analysis was stopped due to a previous positive result.				

Reviewed by:

Reporting Analyst:

Analyzed by: *Kc*Reviewed by: *HIB*Report Sent by: *ly***Instructions:****Pinchin Ltd. - Asbestos Laboratory
Internal Asbestos Bulk Sample Chain of Custody**

Client Name:	Hamilton-Wentworth Catholic School Board	Project Address:	24 Smith Avenue, Hamilton, Ontario
Portfolio/Building No:	St. Patrick Elementary School	Pinchin File:	272113
Submitted by:	Emily Balfour	Email:	ebalfour@pinchin.com
CC Results to:	Michael Maiorana	CC Email:	mmaiorana@pinchin.com
Invoice to:	Accounts Payable	Invoice Email:	ap@pinchin.com
Date Submitted:	May 19 2020	Required by:	May 26 2020
# of Samples:	3	Priority:	5 Day Turnaround
Year of Building Construction (Mandatory Field):	1959		
Do NOT Stop on Positive (Sample Numbers):			
Pinchin Group Company (Mandatory Field):	Pinchin		

To be Completed by Lab Personnel Only:					
Lab Reference #:	6230660 <i>CH</i>		Time:	24 hour clock	
Received by:	MAY 21 2020		Date:	Month	Day Year
Name(s) of Analyst(s):	<i>Kc</i> 2020/06/01				
Sample Prefix	Sample No.	Sample Suffix	Sample Description/Location (Mandatory)		
	S0005	A	Parging cement, Classroom 1, Location 1001 <i>CH 25-50%</i>		
	S0005	B	Parging cement, Corridor, Location 1004 <i>- NA -</i>		
	S0005	C	Parging cement, Girl's Washroom, Location 2013 <i>- NA -</i>		

APPENDIX II
Location List

Client: Hamilton-Wentworth Catholic District Sch
Building Name: St. Patrick
Survey Date: 2018-07-26

Site: 24 Smith Ave., Hamilton, ON
Last Re-Assessment: 2022-05-30

Location No.	Name or Description	Area ft ²	Floor No.	Bldg. Phase	Notes
1	Exterior / General	0	G	A	
1001	Classroom 1	0	1	A	
1002	Classroom 2	0	1	A	
1003	Washroom	0	1	A	
1004	Corridor	0	1	A	
1005	Boiler Room	0	1	A	
1006	Classroom 3	0	1	A	
1007	Custodian Room	0	1	A	
1008	Book Room	0	1	A	
1009	Classroom 4	0	1	A	
1010	Classroom 5	0	1	A	
1011	Classroom 6	0	1	A	
1012	Girls Washroom	0	1	A	
1013	Boys Washroom	0	1	A	
1014	Classroom 7	0	1	A	
1015	Classroom 8	0	1	A	
1016	Supply Room	0	1	A	
1017	Custodian Room	0	1	A	
1018	Classroom 9	0	1	A	
1019	Gymnasium	0	1	A	
2001	Stairwell	0	2	A	
2002	Classroom 10	0	2	A	
2003	Custodian Room	0	2	A	
2004	Staff Room	0	2	A	
2005	Classroom 12	0	2	A	
2006	Mens Washroom	0	2	A	
2007	Womens Washroom	0	2	A	
2008	Office / Reception	0	2	A	
2009	Stairwell / Entrance	0	2	A	
2010	Principals Office	0	2	A	
2011	Library	0	2	A	
2012	Special Ed Class	0	2	A	
2013	Girls Washroom	0	2	A	
2014	Boys Washroom	0	2	A	
2015	Photocopier Room	0	2	A	
2016	Classroom 14	0	2	A	
2017	Stairwell	0	2	A	
2018	Corridor	0	2	A	
2019	Corridor	0	2	A	
2020	Corridor	0	2	A	
2021	ESL Classroom	1	2	A	
2023	Special Ed Class	0	2	A	
3001	Stairwell	0	3	A	
3002	Classroom 19	0	3	A	
3003	Classroom 20	0	3	A	
3005	Classroom 21	0	3	A	
3006	Nurses Office	0	3	A	
3007	Storage	0	3	A	
3008	Office	0	3	A	
3009	Stairwell	0	3	A	
3010	Classroom 24	0	3	A	
3011	Womens Washroom	0	3	A	
3012	Boys Washroom	0	3	A	
3013	Classroom 25	0	3	A	
3014	Classroom 26	0	3	A	
3015	Sink Room	0	3	A	
3016	Classroom 27	0	3	A	
3017	Stairwell	0	3	A	
3018	Storage	0	3	A	
3019	Classroom 23	0	3	A	
3020	Classroom 22	0	3	A	
3021	Book Storage	0	3	A	
3022	Boys Washroom	0	3	A	

Location No.	Name or Description	Area ft ²	Floor No.	Bldg. Phase	Notes
3023	Girls Washroom	0	3	A	
3024	Corridor	0	3	A	
3025	Mid-Corridor	0	3	A	
3026	Corridor	0	3	A	
3027	Storage	0	3	A	

APPENDIX III

Hazardous Materials Summary / Sample Log Report

Client: Hamilton-Wentworth Catholic District Sch

Site: 24 Smith Ave., Hamilton, ON

Building Name: St. Patrick

Survey Date: 2018-07-26

HAZMAT	Sample No	System/Component/Material/Sample Description	Locations	Bldg. Phase	LF	SF	EA	%	Type	Positive	Friability
Asbestos	S0001 ABCDE	Wall, Ceiling, Wall Plaster	1008,1016,2001,2008,2009,3006,3007,3008,3011 3018	A	0	0	0	100	None Detected	No	
Asbestos	S0002 ABC	Wall Column Plaster	1015,2004,3012,3027	A	0	0	0	100	None Detected	No	
Asbestos	S0003 ABC	Wall Drywall And Joint Compound	2004	A	0	0	0	0	None Detected	No	
Asbestos	S0004 ABC	Ceiling Plaster	2017,2018	A	0	0	0	100	None Detected	No	
Asbestos	S0005 ABC	Piping Parging Cement	1001,1002,1003,1004,1006,1007,1008,1009,1017 1019,2013,2014,2015,3002,3003,3005,3011,3020 3021,3022,3023	A	0	0	138	0	Chrysotile	Yes	F
Asbestos	V9500	Floor Adhesive/mastic Vinyl Baseboards	1	A	0	0	0	100	Presumed Asbestos	Yes	NF
Asbestos	V9500	Floor Mastic	1016,2008,2010,3003,3018,3019,3020,3021,3027	A	0	0	0	100	Presumed Asbestos	Yes	NF
Asbestos	V9500	Floor Vinyl Floor Tile And Mastic 12x12 Brown With Beige Brush, 12x12 Brown With Beige Fleck, 12x12 Brown With Beige Streaks, 12x12 Grey With Blue And White Fleck, 12x12 Grey With White Fleck, 9x9 Beige With White Streaks, 9x9 Brown And Beige Streak, 9x9 Brown With White Brush, 9x9 Brown With Beige Streaks, 9x9 Green With White, 9x9 Green With White Brush, 9x9 Grey And White, 9x9 Grey With White, 9x9 White With Coloured Streaks, Beige With Brown Fleck, Beige With Dense Fleck, Brown And White Streak, Brown With Beige Fleck, Brown With Dark Brown And White Fleck, Green With White Fleck, Green With White Streaks, Grey Multi-fleck, Grey With White, Light Grey Multi-fleck, Tan With Brown Streaks, White With Multi Coloured Streaks	1001,1002,1003,1006,1007,1008,1009,1010,1011 1014,1015,1018,1019,2002,2004,2005,2012,2015 2016,2021,2023,3002,3005,3006,3007,3008,3010 3013,3014,3016	A	0	0	0	100	Presumed Asbestos	Yes	NF
Asbestos	V9500	Mechanical Equipment Switch Gear Cement Product Electrical And Switchgear Equipment Transite Components	1	A	0	0	0	100	Presumed Asbestos	Yes	NF
Asbestos	V9500	Mechanical Equipment Electrical Wire Fibreglass W/asb. Tex Jacketing Older Wiring Woven Jacketing And Insulation	1	A	0	0	0	100	Presumed Asbestos	Yes	NF
Asbestos	V9500	Other Door, Window Liner Caulking	1	A	0	0	0	100	Presumed Asbestos	Yes	NF
Asbestos	V9500	Other Stairs Cement Product	2001,2017,3001,3017	A	0	0	0	100	Presumed Asbestos	Yes	NF

HAZMAT	Sample No	System/Component/Material/Sample Description	Locations	Bldg. Phase	LF	SF	EA	%	Type	Positive	Friability
Asbestos	V9500	Other Unidentified Material	1005	A	0	0	0	100	Presumed Asbestos	Yes	F
Asbestos	V9500	Structure Roof Roofing Material	1	A	0	0	0	100	Presumed Asbestos	Yes	NF
Asbestos	V9500	Wall Vermiculite/concrete Block Walls	1	A	0	0	0	100	Presumed Asbestos	Yes	F
Asbestos	V0000	Ceiling Acoustic Tile Ceiling Tiles (lay-in)	2020	A	0	0	0	100	Non Asbestos	No	
Asbestos	V0000	Ceiling Acoustic Tile Ceiling Tiles (lay-in) 2x2 Fiberglass Pinhole	1003	A	0	0	0	100	Non Asbestos	No	
Asbestos	V0000	Ceiling Acoustic Tile Ceiling Tiles (lay-in) 2x2 Pinhole Fibreglass	1012,1013	A	0	0	0	100	Non Asbestos	No	
Asbestos	V0000	Ceiling Acoustic Tile Ceiling Tiles (lay-in) 2x4 Short Fissure And Random Pinhole (previously Sampled)	1004	A	0	0	0	100	Non Asbestos	No	
Asbestos	V0000	Ceiling Acoustic Tile Ceiling Tiles (lay-in) Fibreglass	2006,2007,2013,2014	A	0	0	0	100	Non Asbestos	No	
Asbestos	V0000	Ceiling Acoustic Tile Ceiling Tiles (lay-in) Long Fissure And Random Pinhole	2019	A	0	0	0	100	Non Asbestos	No	
Asbestos	V0000	Ceiling Acoustic Tile Ceiling Tiles (lay-in) Random Pinhole	1014,1015,1016,1017,1018	A	0	0	0	100	Non Asbestos	No	
Asbestos	V0000	Ceiling Acoustic Tile Ceiling Tiles (lay-in) Short Fissure And Random Pinhole	2002,2003,2004,3001,3009,3013,3014,3015,3016 3017,3024,3025,3026	A	0	0	0	100	Non Asbestos	No	
Asbestos	V0000	Ceiling Deck Concrete (precast)	1011	A	0	0	0	100	Non Asbestos	No	
Asbestos	V0000	Floor Vinyl Floor Tile (no Mastic) 12x12 Grey Dense Fleck (installed 2015)	1016,3018	A	0	0	0	100	Non Asbestos	No	
Asbestos	V0000	Floor Vinyl Floor Tile (no Mastic) 12x12 Pink Dense Fleck	3020	A	0	0	0	100	Non Asbestos	No	
Asbestos	V0000	Floor Vinyl Floor Tile (no Mastic) 12x12 Beige Dense Fleck (installed 2015)	2008,2010	A	0	0	0	100	Non Asbestos	No	
Asbestos	V0000	Floor Vinyl Floor Tile (no Mastic) Pink Dense Fleck	3019,3021	A	0	0	0	100	Non Asbestos	No	
Asbestos	V0000	Floor Vinyl Floor Tile (no Mastic) Pink Marble	3003	A	0	0	0	100	Non Asbestos	No	

Legend:

Sample number		Units			
S####	Asbestos sample collected	SF	Square feet	NF	Non Friable material.
L####	Paint sample collected	LF	Linear feet	F	Friable material
P####	PCB sample collected	EA	Each	PF	Potentially Friable material
M####	Mould sample collected	%	Percentage		
V####	Material visually similar to numbered sample collected				
V0000	Known non Hazardous Material				
V9000	Material is visually identified as Hazardous Material				
V9500	Material is presumed to be Hazardous Material				
[Loc. No.]	Abated Material				

APPENDIX IV
All Data Report

ALL DATA REPORT

Client: Hamilton-Wentworth Catholic District Sch
Location: #1 : Exterior / General
Survey Date: 2018-07-26

Site: Elementary
Floor: G

Building Name: St. Patrick
Room #:
Last Re-Assessment: 2022-05-30

Area (sqft): 0

ASBESTOS																
System	Component	Material	Item	Covering	A*	V*	AP*	Good	Fair	Poor	Unit	Sample	Asbestos Type	Amount	Hazard	Friable
Floor		Adhesive/mastic, vinyl baseboards			D	N		100(7)			%	V9500	Presumed Asbestos		Presumed Asbestos	NF
Mechanical Equipment	Electrical Wire	Fibreglass w/Asb. Tex Jacketing, Older Wiring Woven Jacketing and Insulation			C	N		100(7)			%	V9500	Presumed Asbestos		Presumed Asbestos	NF
Mechanical Equipment	Switch Gear	Cement Product, Electrical and Switchgear Equipment Transite Components			C	Y		100(7)			%	V9500	Presumed Asbestos		Presumed Asbestos	NF
Other	Door	Caulking	Perimeter		A	Y		100(7)			%	V9500	Presumed Asbestos		Presumed Asbestos	NF
Other	Window Liner	Caulking	Perimeter		A	Y		100(7)			%	V9500	Presumed Asbestos		Presumed Asbestos	NF
Structure	Roof	Roofing material			C	Y		100(7)			%	V9500	Presumed Asbestos		Presumed Asbestos	NF
Wall ¹		Masonry	Exterior		A	Y										
Wall		Vermiculite/concrete block walls			A	Y		100(5)			%	V9500	Presumed Asbestos		Presumed Asbestos	F

1 - Exterior Cladding Brick

ALL DATA REPORT

Client: Hamilton-Wentworth Catholic District Sch
Location: #1001 : Classroom 1
Survey Date: 2018-07-26

Site: Elementary
Floor: 1

Building Name: St. Patrick
Room #:
Last Re-Assessment: 2022-05-30

Area (sqft): 0

ASBESTOS																
System	Component	Material	Item	Covering	A*	V*	AP*	Good	Fair	Poor	Unit	Sample	Asbestos Type	Amount	Hazard	Friable
Ceiling		Concrete (precast)			C	Y										
Floor		Vinyl Floor Tile and Mastic, 12x12 Grey with White Fleck			A	Y		100(7)			%	V9500	Presumed Asbestos		Presumed Asbestos	NF
Piping ¹		Parging Cement			C	Y		6(7)			EA	S0005A	Chrysotile	25-50%	Confirmed Asbestos	F
Wall ²		Masonry			A	Y										

1 - Ceiling Level
2 - Concrete Block

Client: Hamilton-Wentworth Catholic District Sch
Location: #1002 : Classroom 2
Survey Date: 2018-07-26

Site: Elementary
Floor: 1

Building Name: St. Patrick
Room #:
Last Re-Assessment: 2022-05-30

Area (sqft): 0

ASBESTOS																
System	Component	Material	Item	Covering	A*	V*	AP*	Good	Fair	Poor	Unit	Sample	Asbestos Type	Amount	Hazard	Friable
Ceiling		Concrete (precast)			C	Y										
Floor		Vinyl Floor Tile and Mastic, 9x9 Brown and Beige Streak			A	Y		100(7)			%	V9500	Presumed Asbestos		Presumed Asbestos	NF
Piping		Parging Cement	Fitting		C	Y		5(7)			EA	V0005	Chrysotile	25-50%	Confirmed Asbestos	F
Wall ¹		Masonry			A	Y										

1 - Concrete Block

ALL DATA REPORT

Client: Hamilton-Wentworth Catholic District Sch
Location: #1003 : Washroom
Survey Date: 2018-07-26

Site: Elementary
Floor: 1

Building Name: St. Patrick
Room #:
Last Re-Assessment: 2022-05-30

Area (sqft): 0

ASBESTOS																
System	Component	Material	Item	Covering	A*	V*	AP*	Good	Fair	Poor	Unit	Sample	Asbestos Type	Amount	Hazard	Friable
Ceiling	Acoustic Tile	Ceiling Tiles (lay-in), 2x2 Fiberglass Pinhole			C	Y		100			%	V0000	Non-Asbestos		None	
Floor		Vinyl Floor Tile and Mastic, 12x12 Grey with White Fleck			A	Y		100(7)			%	V9500	Presumed Asbestos		Presumed Asbestos	NF
Piping ¹		Parging Cement			C	Y						V0005	Chrysotile	25-50%	Confirmed Asbestos	F
Structure ²	Deck	Concrete (precast)			C	N										
Wall ³		Masonry			A	Y										

- 1 - Above Ceiling
- 2 - Above Ceiling
- 3 - Concrete Block

Client: Hamilton-Wentworth Catholic District Sch
Location: #1004 : Corridor
Survey Date: 2018-07-26

Site: Elementary
Floor: 1

Building Name: St. Patrick
Room #:
Last Re-Assessment: 2022-05-30

Area (sqft): 0

ASBESTOS																
System	Component	Material	Item	Covering	A*	V*	AP*	Good	Fair	Poor	Unit	Sample	Asbestos Type	Amount	Hazard	Friable
Ceiling	Acoustic Tile	Ceiling Tiles (lay-in), 2x4 Short Fissure and Random Pinhole (previously sampled)			C	Y		100			%	V0000	Non-Asbestos		None	
Floor		Terrazzo			A	Y										
Piping ¹		Fibreglass	Straight		C	Y										
Piping ²		Parging Cement	Fitting		C	Y		43(7)			EA	S0005B	Chrysotile	25-50%	Confirmed Asbestos	F
Wall ³		Masonry			A	Y										

- 1 - Above Ceiling
- 2 - Above Ceiling
- 3 - Concrete Block

ALL DATA REPORT

Client: Hamilton-Wentworth Catholic District Sch
Location: #1005 : Boiler Room
Survey Date: 2018-07-26

Site: Elementary
Floor: 1

Building Name: St. Patrick
Room #:
Last Re-Assessment: 2022-05-30

Area (sqft): 0

ASBESTOS																
System	Component	Material	Item	Covering	A*	V*	AP*	Good	Fair	Poor	Unit	Sample	Asbestos Type	Amount	Hazard	Friable
Floor		Concrete (poured)			A	Y										
Other ¹		Unidentified Material			D	N		100(7)			%	V9500	Presumed Asbestos		Presumed Asbestos	F
Piping ²		Fibreglass		Polyvinyl chloride (PVC)	C	Y										
Structure	Deck	Concrete (precast)			C	Y										
Wall ³		Masonry			A	Y										

- 1 - Room Entrance
- 2 - Ceiling Level
- 3 - Concrete Block

Client: Hamilton-Wentworth Catholic District Sch
Location: #1006 : Classroom 3
Survey Date: 2018-07-26

Site: Elementary
Floor: 1

Building Name: St. Patrick
Room #:
Last Re-Assessment: 2022-05-30

Area (sqft): 0

ASBESTOS																
System	Component	Material	Item	Covering	A*	V*	AP*	Good	Fair	Poor	Unit	Sample	Asbestos Type	Amount	Hazard	Friable
Floor		Vinyl Floor Tile and Mastic, 12x12 Brown with Beige Brush			A	Y		100(7)			%	V9500	Presumed Asbestos		Presumed Asbestos	NF
Piping ¹		Fibreglass		Polyvinyl chloride (PVC)	C	Y										
Piping ²		Parging Cement	Fitting		C	Y		3(7)			EA	V0005	Chrysotile	25-50%	Confirmed Asbestos	F
Structure	Deck	Concrete (precast)			C	Y										
Wall ³		Masonry			A	Y										

- 1 - Ceiling Level
- 2 - Ceiling Level
- 3 - Concrete Block

ALL DATA REPORT

Client: Hamilton-Wentworth Catholic District Sch
Location: #1007 : Custodian Room
Survey Date: 2018-07-26

Site: Elementary
Floor: 1

Building Name: St. Patrick
Room #:
Last Re-Assessment: 2022-05-30

Area (sqft): 0

ASBESTOS																
System	Component	Material	Item	Covering	A*	V*	AP*	Good	Fair	Poor	Unit	Sample	Asbestos Type	Amount	Hazard	Friable
Floor		Vinyl Floor Tile and Mastic, 12x12 Grey with Blue and White Fleck			A	Y		100(7)			%	V9500	Presumed Asbestos		Presumed Asbestos	NF
Piping ¹		Fibreglass		Polyvinyl chloride (PVC)	C	Y										
Piping ²		Parging Cement	Fitting		C	Y		6(7)			EA	V0005	Chrysotile	25-50%	Confirmed Asbestos	F
Structure	Deck	Concrete (poured)			C	Y										
Wall ³		Masonry			A	Y										

1 - Ceiling Level
2 - Ceiling Level
3 - Concrete Block

Client: Hamilton-Wentworth Catholic District Sch
Location: #1008 : Book Room
Survey Date: 2018-07-26

Site: Elementary
Floor: 1

Building Name: St. Patrick
Room #:
Last Re-Assessment: 2022-05-30

Area (sqft): 0

ASBESTOS																
System	Component	Material	Item	Covering	A*	V*	AP*	Good	Fair	Poor	Unit	Sample	Asbestos Type	Amount	Hazard	Friable
Floor		Vinyl Floor Tile and Mastic, 9x9 Brown with White Brush			A	Y		100(7)			%	V9500	Presumed Asbestos		Presumed Asbestos	NF
Floor		Vinyl Floor Tile and Mastic, 9x9 Green with White			A	Y		100(7)			%	V9500	Presumed Asbestos		Presumed Asbestos	NF
Piping ¹		Fibreglass		Polyvinyl chloride (PVC)	C	Y										
Piping ²		Parging Cement	Fitting		C	Y		5(7)				V0005	Chrysotile	25-50%	Confirmed Asbestos	F
Structure	Deck	Concrete (poured)			C	Y										
Wall		Plaster			A	Y		100			%	S0001E	None Detected	N.D.	None	
Wall ³		Masonry			A	Y										

1 - Ceiling Level
2 - Ceiling Level
3 - Concrete Block

ALL DATA REPORT

Client: Hamilton-Wentworth Catholic District Sch
Location: #1009 : Classroom 4
Survey Date: 2018-07-26

Site: Elementary
Floor: 1

Building Name: St. Patrick
Room #:
Last Re-Assessment: 2022-05-30

Area (sqft): 0

ASBESTOS																
System	Component	Material	Item	Covering	A*	V*	AP*	Good	Fair	Poor	Unit	Sample	Asbestos Type	Amount	Hazard	Friable
Floor		Vinyl Floor Tile and Mastic, 9x9 Green with white Brush			A	Y		100(7)			%	V9500	Presumed Asbestos		Presumed Asbestos	NF
Floor		Vinyl Floor Tile and Mastic, 12x12 Brown with Beige streaks			A	Y		100(7)			%	V9500	Presumed Asbestos		Presumed Asbestos	NF
Piping ¹		Fibreglass		Polyvinyl chloride (PVC)	C	Y										
Piping ²		Parging Cement	Fitting		C	Y		2(7)			EA	V0005	Chrysotile	25-50%	Confirmed Asbestos	F
Structure	Deck	Concrete (poured)			C	Y										
Wall ³		Masonry			A	Y										

- 1 - Ceiling Level
- 2 - Ceiling Level
- 3 - Concrete Block

Client: Hamilton-Wentworth Catholic District Sch
Location: #1010 : Classroom 5
Survey Date: 2018-07-26

Site: Elementary
Floor: 1

Building Name: St. Patrick
Room #:
Last Re-Assessment: 2022-05-30

Area (sqft): 0

ASBESTOS																
System	Component	Material	Item	Covering	A*	V*	AP*	Good	Fair	Poor	Unit	Sample	Asbestos Type	Amount	Hazard	Friable
Floor		Vinyl Floor Tile and Mastic, 12x12 Brown with Beige Fleck			A	Y		100(7)			%	V9500	Presumed Asbestos		Presumed Asbestos	NF
Structure	Deck	Concrete (poured)			C	Y										
Wall ¹		Masonry			A	Y										

- 1 - Concrete Block

ALL DATA REPORT

Client: Hamilton-Wentworth Catholic District Sch
Location: #1011 : Classroom 6
Survey Date: 2018-07-26

Site: Elementary
Floor: 1

Building Name: St. Patrick
Room #:
Last Re-Assessment: 2022-05-30

Area (sqft): 0

ASBESTOS																
System	Component	Material	Item	Covering	A*	V*	AP*	Good	Fair	Poor	Unit	Sample	Asbestos Type	Amount	Hazard	Friable
Ceiling	Deck	Concrete (precast)			C	Y		100			%	V0000	Non-Asbestos		None	
Floor		Vinyl Floor Tile and Mastic, 12x12 Brown with Beige Fleck			A	Y		100(7)			%	V9500	Presumed Asbestos		Presumed Asbestos	NF
Floor		Vinyl Floor Tile and Mastic, 9x9 white with coloured streaks			A	Y		100(7)			%	V9500	Presumed Asbestos		Presumed Asbestos	NF
Wall		Concrete (precast)			A	Y										

Client: Hamilton-Wentworth Catholic District Sch
Location: #1012 : Girls Washroom
Survey Date: 2018-07-26

Site: Elementary
Floor: 1

Building Name: St. Patrick
Room #:
Last Re-Assessment: 2022-05-30

Area (sqft): 0

ASBESTOS																
System	Component	Material	Item	Covering	A*	V*	AP*	Good	Fair	Poor	Unit	Sample	Asbestos Type	Amount	Hazard	Friable
Ceiling	Acoustic Tile	Ceiling Tiles (lay-in), 2x2 Pinhole Fibreglass			C	Y		100			%	V0000	Non-Asbestos		None	
Floor		Ceramic Tiles			A	Y										
Structure	Deck	Steel			C	Y										
Wall ¹		Masonry			A	Y										

1 - Concrete Block

ALL DATA REPORT

Client: Hamilton-Wentworth Catholic District Sch
Location: #1013 : Boys Washroom
Survey Date: 2018-07-26

Site: Elementary
Floor: 1

Building Name: St. Patrick
Room #:
Last Re-Assessment: 2022-05-30

Area (sqft): 0

ASBESTOS																
System	Component	Material	Item	Covering	A*	V*	AP*	Good	Fair	Poor	Unit	Sample	Asbestos Type	Amount	Hazard	Friable
Ceiling	Acoustic Tile	Ceiling Tiles (lay-in), 2x2 Pinhole Fibreglass			C	Y		100			%	V0000	Non-Asbestos		None	
Floor		Ceramic Tiles			A	Y										
Structure	Deck	Steel			C	Y										
Wall ¹		Masonry			A	Y										

1 - Concrete Block

Client: Hamilton-Wentworth Catholic District Sch
Location: #1014 : Classroom 7
Survey Date: 2018-07-26

Site: Elementary
Floor: 1

Building Name: St. Patrick
Room #:
Last Re-Assessment: 2022-05-30

Area (sqft): 0

ASBESTOS																
System	Component	Material	Item	Covering	A*	V*	AP*	Good	Fair	Poor	Unit	Sample	Asbestos Type	Amount	Hazard	Friable
Ceiling	Acoustic Tile	Ceiling Tiles (lay-in), Random Pinhole			C	Y		100			%	V0000	Non-Asbestos		None	
Floor		Vinyl Floor Tile and Mastic, Brown with Dark Brown and White Fleck			A	Y		100(7)			%	V9500	Presumed Asbestos		Presumed Asbestos	NF
Wall ¹		Masonry			A	Y										

1 - Concrete Block

ALL DATA REPORT

Client: Hamilton-Wentworth Catholic District Sch
Location: #1015 : Classroom 8
Survey Date: 2018-07-26

Site: Elementary
Floor: 1

Building Name: St. Patrick
Room #:
Last Re-Assessment: 2022-05-30

Area (sqft): 0

ASBESTOS																
System	Component	Material	Item	Covering	A*	V*	AP*	Good	Fair	Poor	Unit	Sample	Asbestos Type	Amount	Hazard	Friable
Ceiling	Acoustic Tile	Ceiling Tiles (lay-in), Random Pinhole			C	Y		100			%	V0000	Non-Asbestos		None	
Floor		Vinyl Floor Tile and Mastic, Brown with Dark Brown and White Fleck			A	Y		100(7)			%	V9500	Presumed Asbestos		Presumed Asbestos	NF
Wall		Plaster			A	Y						S0002C	None Detected	N.D.	None	
Wall ¹		Masonry			A	Y										

1 - Concrete Block

Client: Hamilton-Wentworth Catholic District Sch
Location: #1016 : Supply Room
Survey Date: 2018-07-26

Site: Elementary
Floor: 1

Building Name: St. Patrick
Room #:
Last Re-Assessment: 2022-05-30

Area (sqft): 0

ASBESTOS																
System	Component	Material	Item	Covering	A*	V*	AP*	Good	Fair	Poor	Unit	Sample	Asbestos Type	Amount	Hazard	Friable
Ceiling	Acoustic Tile	Ceiling Tiles (lay-in), Random Pinhole			C	Y		100			%	V0000	Non-Asbestos		None	
Floor		Mastic						100(7)			%	V9500	Presumed Asbestos		Presumed Asbestos	NF
Floor		Vinyl Floor Tile (No Mastic), 12x12 Grey Dense Fleck (installed 2015)			A	Y		100			%	V0000	Non-Asbestos		None	
Wall		Plaster			A	Y		100			%	V0001	None Detected	N.D.	None	
Wall ¹		Masonry			A	Y										

1 - Concrete Block

ALL DATA REPORT

Client: Hamilton-Wentworth Catholic District Sch
Location: #1017 : Custodian Room
Survey Date: 2018-07-26

Site: Elementary
Floor: 1

Building Name: St. Patrick
Room #:
Last Re-Assessment: 2022-05-30

Area (sqft): 0

ASBESTOS																
System	Component	Material	Item	Covering	A*	V*	AP*	Good	Fair	Poor	Unit	Sample	Asbestos Type	Amount	Hazard	Friable
Ceiling	Acoustic Tile	Ceiling Tiles (lay-in), Random Pinhole			C	Y		100			%	V0000	Non-Asbestos		None	
Floor		Terrazzo			A	Y										
Piping ¹		Fibreglass			A	Y										
Piping ²		Parging Cement	Fitting		C	Y		3(7)			EA	V0005	Chrysotile	25-50%	Confirmed Asbestos	F
Wall ³		Masonry			A	Y										

- 1 - Above Ceiling
- 2 - Ceiling Level
- 3 - Concrete Block

Client: Hamilton-Wentworth Catholic District Sch
Location: #1018 : Classroom 9
Survey Date: 2018-07-26

Site: Elementary
Floor: 1

Building Name: St. Patrick
Room #:
Last Re-Assessment: 2022-05-30

Area (sqft): 0

ASBESTOS																
System	Component	Material	Item	Covering	A*	V*	AP*	Good	Fair	Poor	Unit	Sample	Asbestos Type	Amount	Hazard	Friable
Ceiling	Acoustic Tile	Ceiling Tiles (lay-in), Random Pinhole			C	Y		100			%	V0000	Non-Asbestos		None	
Floor		Vinyl Floor Tile and Mastic, Brown with Dark Brown and White Fleck			A	Y		100(7)			%	V9500	Presumed Asbestos		Presumed Asbestos	NF
Floor		Vinyl Floor Tile and Mastic, Brown with Beige Fleck			A	Y		100(7)			%	V9500	Presumed Asbestos		Presumed Asbestos	NF
Wall ¹		Masonry			A	Y										

- 1 - Concrete Block

ALL DATA REPORT

Client: Hamilton-Wentworth Catholic District Sch
Location: #1019 : Gymnasium
Survey Date: 2018-07-26

Site: Elementary
Floor: 1

Building Name: St. Patrick
Room #:
Last Re-Assessment: 2022-05-30

Area (sqft): 0

ASBESTOS																
System	Component	Material	Item	Covering	A*	V*	AP*	Good	Fair	Poor	Unit	Sample	Asbestos Type	Amount	Hazard	Friable
Floor		Vinyl Floor Tile and Mastic, 9x9 Beige with White Streaks			A	Y		100(7)			%	V9500	Presumed Asbestos		Presumed Asbestos	NF
Piping ¹		Fibreglass		Polyvinyl chloride (PVC)	C	Y										
Piping ²		Parging Cement	Fitting		C	Y		8(7)				V0005	Chrysotile	25-50%	Confirmed Asbestos	F
Structure	Deck	Steel			C	Y										
Wall ³		Masonry			A	Y										

- 1 - Ceiling Level
- 2 - Ceiling Level Gymnasium Storage
- 3 - Concrete Block

Client: Hamilton-Wentworth Catholic District Sch
Location: #2001 : Stairwell
Survey Date: 2018-07-26

Site: Elementary
Floor: 2

Building Name: St. Patrick
Room #:
Last Re-Assessment: 2022-05-30

Area (sqft): 0

ASBESTOS																
System	Component	Material	Item	Covering	A*	V*	AP*	Good	Fair	Poor	Unit	Sample	Asbestos Type	Amount	Hazard	Friable
Ceiling		Plaster			C	Y		100			%	V0001	None Detected	N.D.	None	
Floor		Terrazzo			A	Y										
Other ¹		Cement Product			C	N		100(7)			%	V9500	Presumed Asbestos		Presumed Asbestos	NF
Wall ²		Masonry			A	Y										

- 1 - Under Stairs
- 2 - Concrete Block

ALL DATA REPORT

Client: Hamilton-Wentworth Catholic District Sch
Location: #2002 : Classroom 10
Survey Date: 2018-07-26

Site: Elementary
Floor: 2

Building Name: St. Patrick
Room #:
Last Re-Assessment: 2022-05-30

Area (sqft): 0

ASBESTOS																
System	Component	Material	Item	Covering	A*	V*	AP*	Good	Fair	Poor	Unit	Sample	Asbestos Type	Amount	Hazard	Friable
Ceiling	Acoustic Tile	Ceiling Tiles (lay-in), Short Fissure and Random Pinhole			C	Y		100			%	V0000	Non-Asbestos		None	
Floor		Vinyl Floor Tile and Mastic, Beige with Dense Fleck			A	Y		100(7)			%	V9500	Presumed Asbestos		Presumed Asbestos	NF
Wall ¹		Masonry			A	Y										

1 - Concrete Block

Client: Hamilton-Wentworth Catholic District Sch
Location: #2003 : Custodian Room
Survey Date: 2018-07-26

Site: Elementary
Floor: 2

Building Name: St. Patrick
Room #:
Last Re-Assessment: 2022-05-30

Area (sqft): 0

ASBESTOS																
System	Component	Material	Item	Covering	A*	V*	AP*	Good	Fair	Poor	Unit	Sample	Asbestos Type	Amount	Hazard	Friable
Ceiling	Acoustic Tile	Ceiling Tiles (lay-in), Short Fissure and Random Pinhole			C	Y		100			%	V0000	Non-Asbestos		None	
Floor		Terrazzo			A	Y										
Wall ¹		Masonry			A	Y										

1 - Concrete Block

ALL DATA REPORT

Client: Hamilton-Wentworth Catholic District Sch
Location: #2004 : Staff Room
Survey Date: 2018-07-26

Site: Elementary
Floor: 2

Building Name: St. Patrick
Room #:
Last Re-Assessment: 2022-05-30

Area (sqft): 0

ASBESTOS																
System	Component	Material	Item	Covering	A*	V*	AP*	Good	Fair	Poor	Unit	Sample	Asbestos Type	Amount	Hazard	Friable
Ceiling	Acoustic Tile	Ceiling Tiles (lay-in), Short Fissure and Random Pinhole			C	Y		100			%	V0000	Non-Asbestos		None	
Floor		Vinyl Floor Tile and Mastic, Tan with Brown Streaks			A	Y		100(7)			%	V9500	Presumed Asbestos		Presumed Asbestos	NF
Wall		Drywall and joint compound			A	Y						S0003ABC	None Detected	N.D.	None	
Wall ¹		Masonry			A	Y										
Wall	Column	Plaster			A	Y		100			%	S0002B	None Detected	N.D.	None	

1 - Concrete Block

Client: Hamilton-Wentworth Catholic District Sch
Location: #2005 : Classroom 12
Survey Date: 2018-07-26

Site: Elementary
Floor: 2

Building Name: St. Patrick
Room #:
Last Re-Assessment: 2022-05-30

Area (sqft): 0

ASBESTOS																
System	Component	Material	Item	Covering	A*	V*	AP*	Good	Fair	Poor	Unit	Sample	Asbestos Type	Amount	Hazard	Friable
Ceiling	Acoustic Tile	Ceiling Tiles (lay-in), Short Fissure and Pinhole			C	Y		100			%					
Floor		Vinyl Floor Tile and Mastic, Green with White Fleck			A	Y		100(7)			%	V9500	Presumed Asbestos		Presumed Asbestos	NF
Wall ¹		Masonry			A	Y										

1 - Concrete Block

ALL DATA REPORT

Client: Hamilton-Wentworth Catholic District Sch
Location: #2006 : Mens Washroom
Survey Date: 2018-07-26

Site: Elementary
Floor: 2

Building Name: St. Patrick
Room #:
Last Re-Assessment: 2022-05-30

Area (sqft): 0

ASBESTOS																
System	Component	Material	Item	Covering	A*	V*	AP*	Good	Fair	Poor	Unit	Sample	Asbestos Type	Amount	Hazard	Friable
Ceiling	Acoustic Tile	Ceiling Tiles (lay-in), Fibreglass			C	Y		100			%	V0000	Non-Asbestos		None	
Floor		Ceramic Tiles			A	Y										
Wall ¹		Masonry			A	Y										
Wall		Ceramic Tiles			A	Y										

1 - Concrete Block

Client: Hamilton-Wentworth Catholic District Sch
Location: #2007 : Womens Washroom
Survey Date: 2018-07-26

Site: Elementary
Floor: 2

Building Name: St. Patrick
Room #:
Last Re-Assessment: 2022-05-30

Area (sqft): 0

ASBESTOS																
System	Component	Material	Item	Covering	A*	V*	AP*	Good	Fair	Poor	Unit	Sample	Asbestos Type	Amount	Hazard	Friable
Ceiling	Acoustic Tile	Ceiling Tiles (lay-in), Fibreglass			C	Y		100			%	V0000	Non-Asbestos		None	
Floor		Ceramic Tiles			A	Y										
Wall ¹		Masonry			A	Y										
Wall		Ceramic Tiles			A	Y										

1 - Concrete Block

ALL DATA REPORT

Client: Hamilton-Wentworth Catholic District Sch
Location: #2008 : Office / Reception
Survey Date: 2018-07-26

Site: Elementary
Floor: 2

Building Name: St. Patrick
Room #:
Last Re-Assessment: 2022-05-30

Area (sqft): 0

ASBESTOS																
System	Component	Material	Item	Covering	A*	V*	AP*	Good	Fair	Poor	Unit	Sample	Asbestos Type	Amount	Hazard	Friable
Floor		Mastic			D	N		100(7)			%	V9500	Presumed Asbestos		Presumed Asbestos	NF
Floor		Vinyl Floor Tile (No Mastic), 12x12 beige dense fleck (installed 2015)			A	Y		100			%	V0000	Non-Asbestos		None	
Structure	Deck	Concrete (poured)			C	Y										
Wall		Plaster			A	Y		100			%	S0001D	None Detected	N.D.	None	
Wall ¹		Masonry			A	Y										

1 - Concrete Block

Client: Hamilton-Wentworth Catholic District Sch
Location: #2009 : Stairwell / Entrance
Survey Date: 2018-07-26

Site: Elementary
Floor: 2

Building Name: St. Patrick
Room #:
Last Re-Assessment: 2022-05-30

Area (sqft): 0

ASBESTOS																
System	Component	Material	Item	Covering	A*	V*	AP*	Good	Fair	Poor	Unit	Sample	Asbestos Type	Amount	Hazard	Friable
Ceiling		Plaster			C	Y		100			%	V0001	None Detected	N.D.	None	
Floor		Terrazzo			A	Y										
Wall ¹		Masonry			A	Y										

1 - Concrete Block

ALL DATA REPORT

Client: Hamilton-Wentworth Catholic District Sch
Location: #2010 : Principals Office
Survey Date: 2018-07-26

Site: Elementary
Floor: 2

Building Name: St. Patrick
Room #:
Last Re-Assessment: 2022-05-30

Area (sqft): 0

ASBESTOS																
System	Component	Material	Item	Covering	A*	V*	AP*	Good	Fair	Poor	Unit	Sample	Asbestos Type	Amount	Hazard	Friable
Floor		Mastic			D	N		100(7)			%	V9500	Presumed Asbestos		Presumed Asbestos	NF
Floor		Vinyl Floor Tile (No Mastic), 12x12 beige dense fleck (installed 2015)			A	Y		100			%	V0000	Non-Asbestos		None	
Structure	Deck	Concrete (poured)			C	Y										
Wall ¹		Masonry			A	Y										

1 - Concrete Block

Client: Hamilton-Wentworth Catholic District Sch
Location: #2011 : Library
Survey Date: 2018-07-26

Site: Elementary
Floor: 2

Building Name: St. Patrick
Room #:
Last Re-Assessment: 2022-05-30

Area (sqft): 0

ASBESTOS																
System	Component	Material	Item	Covering	A*	V*	AP*	Good	Fair	Poor	Unit	Sample	Asbestos Type	Amount	Hazard	Friable
Floor		Carpet			A	Y										
Structure	Deck	Concrete (poured)			A	Y										
Wall ¹		Masonry			A	Y										

1 - Concrete Block

ALL DATA REPORT

Client: Hamilton-Wentworth Catholic District Sch
Location: #2012 : Special Ed Class
Survey Date: 2018-07-26

Site: Elementary
Floor: 2

Building Name: St. Patrick
Room #:
Last Re-Assessment: 2022-05-30

Area (sqft): 0

ASBESTOS																
System	Component	Material	Item	Covering	A*	V*	AP*	Good	Fair	Poor	Unit	Sample	Asbestos Type	Amount	Hazard	Friable
Floor		Vinyl Floor Tile and Mastic, 9x9 Grey with White			A	Y		100(7)			%	V9500	Presumed Asbestos		Presumed Asbestos	NF
Structure	Deck	Concrete (poured)			C	Y										
Wall ¹		Masonry			A	Y										

1 - Concrete Block

Client: Hamilton-Wentworth Catholic District Sch
Location: #2013 : Girls Washroom
Survey Date: 2018-07-26

Site: Elementary
Floor: 2

Building Name: St. Patrick
Room #:
Last Re-Assessment: 2022-05-30

Area (sqft): 0

ASBESTOS																
System	Component	Material	Item	Covering	A*	V*	AP*	Good	Fair	Poor	Unit	Sample	Asbestos Type	Amount	Hazard	Friable
Ceiling	Acoustic Tile	Ceiling Tiles (lay-in), Fibreglass			C	Y		100			%	V0000	Non-Asbestos		None	
Floor		Terrazzo			A	Y										
Piping ¹		Fibreglass			C	Y										
Piping ²		Parging Cement	Fitting		C	Y		8(7)			EA	S0005C	Chrysotile	25-50%	Confirmed Asbestos	F
Wall ³		Masonry			A	Y										

1 - Above Ceiling
2 - Ceiling Level
3 - Concrete Block

ALL DATA REPORT

Client: Hamilton-Wentworth Catholic District Sch
Location: #2014 : Boys Washroom
Survey Date: 2018-07-26

Site: Elementary
Floor: 2

Building Name: St. Patrick
Room #:
Last Re-Assessment: 2022-05-30

Area (sqft): 0

ASBESTOS																
System	Component	Material	Item	Covering	A*	V*	AP*	Good	Fair	Poor	Unit	Sample	Asbestos Type	Amount	Hazard	Friable
Ceiling	Acoustic Tile	Ceiling Tiles (lay-in), Fibreglass			C	Y		100			%	V0000	Non-Asbestos		None	
Floor		Terrazzo			A	Y										
Piping ¹		Fibreglass			C	Y										
Piping ²		Parging Cement			C	Y		3(7)			EA	V0005	Chrysotile	25-50%	Confirmed Asbestos	F
Wall ³		Masonry			A	Y										

- 1 - Above Ceiling
- 2 - Ceiling Level
- 3 - Concrete Block

Client: Hamilton-Wentworth Catholic District Sch
Location: #2015 : Photocopier Room
Survey Date: 2018-07-26

Site: Elementary
Floor: 2

Building Name: St. Patrick
Room #:
Last Re-Assessment: 2022-05-30

Area (sqft): 0

ASBESTOS																
System	Component	Material	Item	Covering	A*	V*	AP*	Good	Fair	Poor	Unit	Sample	Asbestos Type	Amount	Hazard	Friable
Floor		Vinyl Floor Tile and Mastic, Grey with White			A	Y		100(7)			%	V9500	Presumed Asbestos		Presumed Asbestos	NF
Piping		Parging Cement	Fitting		C	Y		4(7)			EA	V0005	Chrysotile	25-50%	Confirmed Asbestos	F
Structure	Deck	Concrete (poured)			C	Y										
Wall ¹		Masonry			A	Y										

- 1 - Concrete Block

ALL DATA REPORT

Client: Hamilton-Wentworth Catholic District Sch
Location: #2016 : Classroom 14
Survey Date: 2018-07-26

Site: Elementary
Floor: 2

Building Name: St. Patrick
Room #:
Last Re-Assessment: 2022-05-30

Area (sqft): 0

ASBESTOS																
System	Component	Material	Item	Covering	A*	V*	AP*	Good	Fair	Poor	Unit	Sample	Asbestos Type	Amount	Hazard	Friable
Floor		Vinyl Floor Tile and Mastic, Beige with Brown Fleck			A	Y		100(7)			%	V9500	Presumed Asbestos		Presumed Asbestos	NF
Structure	Deck	Concrete (poured)			C	Y										
Wall ¹		Masonry			A	Y										

1 - Concrete Block

Client: Hamilton-Wentworth Catholic District Sch
Location: #2017 : Stairwell
Survey Date: 2018-07-26

Site: Elementary
Floor: 2

Building Name: St. Patrick
Room #:
Last Re-Assessment: 2022-05-30

Area (sqft): 0

ASBESTOS																
System	Component	Material	Item	Covering	A*	V*	AP*	Good	Fair	Poor	Unit	Sample	Asbestos Type	Amount	Hazard	Friable
Ceiling		Plaster, Textured			C	Y		50			%	S0004BC	None Detected	N.D.	None	
Floor		Terrazzo			A	Y										
Other ¹		Cement Product			C	Y		100(7)			%	V9500	Presumed Asbestos		Presumed Asbestos	NF
Wall ²		Masonry			A	Y										

1 - Under Stairs

2 - Concrete Block

ALL DATA REPORT

Client: Hamilton-Wentworth Catholic District Sch
Location: #2018 : Corridor
Survey Date: 2018-07-26

Site: Elementary
Floor: 2

Building Name: St. Patrick
Room #:
Last Re-Assessment: 2022-05-30

Area (sqft): 0

ASBESTOS																
System	Component	Material	Item	Covering	A*	V*	AP*	Good	Fair	Poor	Unit	Sample	Asbestos Type	Amount	Hazard	Friable
Ceiling		Plaster, Textured			C	Y		100			%	S0004A	None Detected	N.D.	None	
Floor		Terrazzo			A	Y										
Wall ¹		Masonry			A	Y										

1 - Concrete Block

Client: Hamilton-Wentworth Catholic District Sch
Location: #2019 : Corridor
Survey Date: 2018-07-26

Site: Elementary
Floor: 2

Building Name: St. Patrick
Room #:
Last Re-Assessment: 2022-05-30

Area (sqft): 0

ASBESTOS																
System	Component	Material	Item	Covering	A*	V*	AP*	Good	Fair	Poor	Unit	Sample	Asbestos Type	Amount	Hazard	Friable
Ceiling	Acoustic Tile	Ceiling Tiles (lay-in), Long Fissure and Random Pinhole			C	Y		100			%	V0000	Non-Asbestos		None	
Floor		Terrazzo			A	Y										
Wall ¹		Masonry			A	Y										

1 - Concrete Block

ALL DATA REPORT

Client: Hamilton-Wentworth Catholic District Sch
Location: #2020 : Corridor
Survey Date: 2018-07-26

Site: Elementary
Floor: 2

Building Name: St. Patrick
Room #:
Last Re-Assessment: 2022-05-30

Area (sqft): 0

ASBESTOS																
System	Component	Material	Item	Covering	A*	V*	AP*	Good	Fair	Poor	Unit	Sample	Asbestos Type	Amount	Hazard	Friable
Ceiling	Acoustic Tile	Ceiling Tiles (lay-in)			C	Y		100			%	V0000	Non-Asbestos		None	
Floor		Terrazzo			A	Y										
Wall ¹		Masonry			A	Y										

1 - Concrete Block

Client: Hamilton-Wentworth Catholic District Sch
Location: #2021 : ESL Classroom
Survey Date: 2018-07-26

Site: Elementary
Floor: 2

Building Name: St. Patrick
Room #:
Last Re-Assessment: 2022-05-30

Area (sqft): 1

ASBESTOS																
System	Component	Material	Item	Covering	A*	V*	AP*	Good	Fair	Poor	Unit	Sample	Asbestos Type	Amount	Hazard	Friable
Ceiling ¹		Masonry			C	Y										
Floor		Vinyl Floor Tile and Mastic, 9x9 Brown with beige streaks			A	Y		100(7)			%	V9500	Presumed Asbestos		Presumed Asbestos	NF
Wall ²		Masonry			A	Y										

1 - Concrete Block

2 - Concrete Block

ALL DATA REPORT

Client: Hamilton-Wentworth Catholic District Sch
Location: #2023 : Special Ed Class
Survey Date: 2018-07-26

Site: Elementary
Floor: 2

Building Name: St. Patrick
Room #:
Last Re-Assessment: 2022-05-30

Area (sqft): 0

ASBESTOS																
System	Component	Material	Item	Covering	A*	V*	AP*	Good	Fair	Poor	Unit	Sample	Asbestos Type	Amount	Hazard	Friable
Floor		Vinyl Floor Tile and Mastic, 9x9 Grey and White			A	Y		100(7)			%	V9500	Presumed Asbestos		Presumed Asbestos	NF
Structure	Deck	Concrete (poured)			C	Y										
Wall ¹		Masonry			A	Y										

1 - Concrete Block

Client: Hamilton-Wentworth Catholic District Sch
Location: #3001 : Stairwell
Survey Date: 2018-07-26

Site: Elementary
Floor: 3

Building Name: St. Patrick
Room #:
Last Re-Assessment: 2022-05-30

Area (sqft): 0

ASBESTOS																
System	Component	Material	Item	Covering	A*	V*	AP*	Good	Fair	Poor	Unit	Sample	Asbestos Type	Amount	Hazard	Friable
Ceiling	Acoustic Tile	Ceiling Tiles (lay-in), Short Fissure and Random Pinhole			C	Y		100			%	V0000	Non-Asbestos		None	
Floor		Terrazzo			A	Y										
Other ¹		Cement Product			C	Y		100(7)			%	V9500	Presumed Asbestos		Presumed Asbestos	NF
Wall ²		Masonry			A	Y										

1 - Under Stairs

2 - Concrete Block

ALL DATA REPORT

Client: Hamilton-Wentworth Catholic District Sch
Location: #3002 : Classroom 19
Survey Date: 2018-07-26

Site: Elementary
Floor: 3

Building Name: St. Patrick
Room #:
Last Re-Assessment: 2022-05-30

Area (sqft): 0

ASBESTOS																
System	Component	Material	Item	Covering	A*	V*	AP*	Good	Fair	Poor	Unit	Sample	Asbestos Type	Amount	Hazard	Friable
Floor		Vinyl Floor Tile and Mastic, Grey Multi-Fleck			A	Y		100(7)			%	V9500	Presumed Asbestos		Presumed Asbestos	NF
Piping		Parging Cement	Fitting		C	Y		9(7)			EA	V0005	Chrysotile	25-50%	Confirmed Asbestos	F
Structure	Deck	Concrete (poured)			C	Y										
Wall ¹		Masonry			A	Y										

1 - Concrete Block

Client: Hamilton-Wentworth Catholic District Sch
Location: #3003 : Classroom 20
Survey Date: 2018-07-26

Site: Elementary
Floor: 3

Building Name: St. Patrick
Room #:
Last Re-Assessment: 2022-05-30

Area (sqft): 0

ASBESTOS																
System	Component	Material	Item	Covering	A*	V*	AP*	Good	Fair	Poor	Unit	Sample	Asbestos Type	Amount	Hazard	Friable
Floor		Mastic			D	N		100(7)			%	V9500	Presumed Asbestos		Presumed Asbestos	NF
Floor		Vinyl Floor Tile (No Mastic), Pink Marble			A	Y		100			%	V0000	Non-Asbestos		None	
Piping ¹		Parging Cement	Fitting		C	Y		5(7)			EA	V0005	Chrysotile	25-50%	Confirmed Asbestos	F
Structure	Deck	Concrete (poured)			C	Y										
Wall ²		Masonry			A	Y										

1 - Ceiling Level

2 - Concrete Block

ALL DATA REPORT

Client: Hamilton-Wentworth Catholic District Sch
Location: #3005 : Classroom 21
Survey Date: 2018-07-26

Site: Elementary
Floor: 3

Building Name: St. Patrick
Room #:
Last Re-Assessment: 2022-05-30

Area (sqft): 0

ASBESTOS																
System	Component	Material	Item	Covering	A*	V*	AP*	Good	Fair	Poor	Unit	Sample	Asbestos Type	Amount	Hazard	Friable
Floor		Vinyl Floor Tile and Mastic, Light Grey Multi-Fleck			A	Y		100(7)			%	V9500	Presumed Asbestos		Presumed Asbestos	NF
Piping ¹		Parging Cement	Fitting		C	Y		3(7)			EA	V0005	Chrysotile	25-50%	Confirmed Asbestos	F
Structure	Deck	Concrete (poured)			C	Y										
Wall ²		Masonry			A	Y										

- 1 - Ceiling Level
2 - Concrete Block

Client: Hamilton-Wentworth Catholic District Sch
Location: #3006 : Nurses Office
Survey Date: 2018-07-26

Site: Elementary
Floor: 3

Building Name: St. Patrick
Room #:
Last Re-Assessment: 2022-05-30

Area (sqft): 0

ASBESTOS																
System	Component	Material	Item	Covering	A*	V*	AP*	Good	Fair	Poor	Unit	Sample	Asbestos Type	Amount	Hazard	Friable
Floor		Vinyl Floor Tile and Mastic, Light Grey Multi-Fleck			A	Y		100(7)			%	V9500	Presumed Asbestos		Presumed Asbestos	NF
Structure	Deck	Concrete (poured)			C	Y										
Wall		Plaster			A	Y		100			%	V0001	None Detected	N.D.	None	
Wall ¹		Masonry			A	Y										

- 1 - Concrete Block

ALL DATA REPORT

Client: Hamilton-Wentworth Catholic District Sch
Location: #3007 : Storage
Survey Date: 2018-07-26

Site: Elementary
Floor: 3

Building Name: St. Patrick
Room #:
Last Re-Assessment: 2022-05-30

Area (sqft): 0

ASBESTOS																
System	Component	Material	Item	Covering	A*	V*	AP*	Good	Fair	Poor	Unit	Sample	Asbestos Type	Amount	Hazard	Friable
Floor		Vinyl Floor Tile and Mastic, Light Grey Multi-Fleck			A	Y		100(7)			%	V9500	Presumed Asbestos		Presumed Asbestos	NF
Structure	Deck	Concrete (poured)			C	Y										
Wall		Plaster			A	Y		100			%	V0001	None Detected	N.D.	None	
Wall ¹		Masonry			A	Y										

1 - Concrete Block

Client: Hamilton-Wentworth Catholic District Sch
Location: #3008 : Office
Survey Date: 2018-07-26

Site: Elementary
Floor: 3

Building Name: St. Patrick
Room #:
Last Re-Assessment: 2022-05-30

Area (sqft): 0

ASBESTOS																
System	Component	Material	Item	Covering	A*	V*	AP*	Good	Fair	Poor	Unit	Sample	Asbestos Type	Amount	Hazard	Friable
Floor		Vinyl Floor Tile and Mastic, Light Grey Multi-Fleck			A	Y		100(7)			%	V9500	Presumed Asbestos		Presumed Asbestos	NF
Structure	Deck	Concrete (poured)			C	Y										
Wall		Plaster			A	Y		100			%	S0001C	None Detected	N.D.	None	
Wall ¹		Masonry			A	Y										

1 - Concrete Block

ALL DATA REPORT

Client: Hamilton-Wentworth Catholic District Sch
Location: #3009 : Stairwell
Survey Date: 2018-07-26

Site: Elementary
Floor: 3

Building Name: St. Patrick
Room #:
Last Re-Assessment: 2022-05-30

Area (sqft): 0

ASBESTOS																
System	Component	Material	Item	Covering	A*	V*	AP*	Good	Fair	Poor	Unit	Sample	Asbestos Type	Amount	Hazard	Friable
Ceiling	Acoustic Tile	Ceiling Tiles (lay-in), Short Fissure and Random Pinhole			C	Y		100			%	V0000	Non-Asbestos		None	
Floor		Terrazzo			A	Y										
Wall ¹		Masonry			A	Y										

1 - Concrete Block

Client: Hamilton-Wentworth Catholic District Sch
Location: #3010 : Classroom 24
Survey Date: 2018-07-26

Site: Elementary
Floor: 3

Building Name: St. Patrick
Room #:
Last Re-Assessment: 2022-05-30

Area (sqft): 0

ASBESTOS																
System	Component	Material	Item	Covering	A*	V*	AP*	Good	Fair	Poor	Unit	Sample	Asbestos Type	Amount	Hazard	Friable
Floor		Vinyl Floor Tile and Mastic, White with Multi Coloured Streaks			A	Y		100(7)			%	V9500	Presumed Asbestos		Presumed Asbestos	NF
Structure	Deck	Concrete (poured)			C	Y										
Wall ¹		Masonry			A	Y										

1 - Concrete Block

ALL DATA REPORT

Client: Hamilton-Wentworth Catholic District Sch
Location: #3011 : Womens Washroom
Survey Date: 2018-07-26

Site: Elementary
Floor: 3

Building Name: St. Patrick
Room #:
Last Re-Assessment: 2022-05-30

Area (sqft): 0

ASBESTOS																
System	Component	Material	Item	Covering	A*	V*	AP*	Good	Fair	Poor	Unit	Sample	Asbestos Type	Amount	Hazard	Friable
Floor		Ceramic Tiles			A	Y										
Piping		Parging Cement	Fitting	Polyvinyl chloride (PVC)	C	Y		4(7)			EA	V0005	Chrysotile	25-50%	Confirmed Asbestos	F
Structure	Deck	Concrete (poured)			C	Y										
Wall		Plaster			A	Y						S0001A	None Detected	N.D.	None	
Wall ¹		Masonry			A	Y										

1 - Concrete Block

Client: Hamilton-Wentworth Catholic District Sch
Location: #3012 : Boys Washroom
Survey Date: 2018-07-26

Site: Elementary
Floor: 3

Building Name: St. Patrick
Room #:
Last Re-Assessment: 2022-05-30

Area (sqft): 0

ASBESTOS																
System	Component	Material	Item	Covering	A*	V*	AP*	Good	Fair	Poor	Unit	Sample	Asbestos Type	Amount	Hazard	Friable
Floor		Ceramic Tiles			A	Y										
Structure	Deck	Concrete (poured)			C	Y										
Wall		Plaster			A	Y		100			%	V0002	None Detected	N.D.	None	
Wall ¹		Masonry			A	Y										

1 - Concrete Block

ALL DATA REPORT

Client: Hamilton-Wentworth Catholic District Sch
Location: #3013 : Classroom 25
Survey Date: 2018-07-26

Site: Elementary
Floor: 3

Building Name: St. Patrick
Room #:
Last Re-Assessment: 2022-05-30

Area (sqft): 0

ASBESTOS																
System	Component	Material	Item	Covering	A*	V*	AP*	Good	Fair	Poor	Unit	Sample	Asbestos Type	Amount	Hazard	Friable
Ceiling	Acoustic Tile	Ceiling Tiles (lay-in), Short Fissure and Random Pinhole			C	Y		100			%	V0000	Non-Asbestos		None	
Floor		Vinyl Floor Tile and Mastic, Green with White Streaks			A	Y		100(7)			%	V9500	Presumed Asbestos		Presumed Asbestos	NF
Wall ¹		Masonry			A	Y										

1 - Concrete Block

Client: Hamilton-Wentworth Catholic District Sch
Location: #3014 : Classroom 26
Survey Date: 2018-07-26

Site: Elementary
Floor: 3

Building Name: St. Patrick
Room #:
Last Re-Assessment: 2022-05-30

Area (sqft): 0

ASBESTOS																
System	Component	Material	Item	Covering	A*	V*	AP*	Good	Fair	Poor	Unit	Sample	Asbestos Type	Amount	Hazard	Friable
Ceiling	Acoustic Tile	Ceiling Tiles (lay-in), Short Fissure and Random Pinhole			C	Y		100			%	V0000	Non-Asbestos		None	
Floor		Vinyl Floor Tile and Mastic, Green with White Streaks			A	Y		100(7)			%	V9500	Presumed Asbestos		Presumed Asbestos	NF
Wall ¹		Masonry			A	Y										

1 - Concrete Block

ALL DATA REPORT

Client: Hamilton-Wentworth Catholic District Sch
Location: #3015 : Sink Room
Survey Date: 2018-07-26

Site: Elementary
Floor: 3

Building Name: St. Patrick
Room #:
Last Re-Assessment: 2022-05-30

Area (sqft): 0

ASBESTOS																
System	Component	Material	Item	Covering	A*	V*	AP*	Good	Fair	Poor	Unit	Sample	Asbestos Type	Amount	Hazard	Friable
Ceiling	Acoustic Tile	Ceiling Tiles (lay-in), Short Fissure and Random Pinhole			C	Y		100			%	V0000	Non-Asbestos		None	
Floor		Terrazzo			A	Y										
Wall ¹		Masonry			A	Y										

1 - Concrete Block

Client: Hamilton-Wentworth Catholic District Sch
Location: #3016 : Classroom 27
Survey Date: 2018-07-26

Site: Elementary
Floor: 3

Building Name: St. Patrick
Room #:
Last Re-Assessment: 2022-05-30

Area (sqft): 0

ASBESTOS																
System	Component	Material	Item	Covering	A*	V*	AP*	Good	Fair	Poor	Unit	Sample	Asbestos Type	Amount	Hazard	Friable
Ceiling	Acoustic Tile	Ceiling Tiles (lay-in), Short Fissure and Random Pinhole			C	Y		100			%	V0000	Non-Asbestos		None	
Floor		Vinyl Floor Tile and Mastic, Brown and White Streak			A	Y		100(7)			%	V9500	Presumed Asbestos		Presumed Asbestos	NF
Wall ¹		Masonry			A	Y										

1 - Concrete Block

ALL DATA REPORT

Client: Hamilton-Wentworth Catholic District Sch
Location: #3017 : Stairwell
Survey Date: 2018-07-26

Site: Elementary
Floor: 3

Building Name: St. Patrick
Room #:
Last Re-Assessment: 2022-05-30

Area (sqft): 0

ASBESTOS																
System	Component	Material	Item	Covering	A*	V*	AP*	Good	Fair	Poor	Unit	Sample	Asbestos Type	Amount	Hazard	Friable
Ceiling	Acoustic Tile	Ceiling Tiles (lay-in), Short Fissure and Random Pinhole			C	Y		100			%	V0000	Non-Asbestos		None	
Floor		Terrazzo			A	Y										
Other	Stairs	Cement Product			A	Y		100(7)			%	V9500	Presumed Asbestos		Presumed Asbestos	NF
Wall ¹		Masonry			A	Y										

1 - Concrete Block

Client: Hamilton-Wentworth Catholic District Sch
Location: #3018 : Storage
Survey Date: 2018-07-26

Site: Elementary
Floor: 3

Building Name: St. Patrick
Room #:
Last Re-Assessment: 2022-05-30

Area (sqft): 0

ASBESTOS																
System	Component	Material	Item	Covering	A*	V*	AP*	Good	Fair	Poor	Unit	Sample	Asbestos Type	Amount	Hazard	Friable
Floor		Mastic			D	N		100(7)			%	V9500	Presumed Asbestos		Presumed Asbestos	NF
Floor		Vinyl Floor Tile (No Mastic), 12x12 Grey Dense Fleck (installed 2015)			A	Y		100			%	V0000	Non-Asbestos		None	
Structure	Deck	Concrete (poured)			C	Y										
Wall		Plaster			A	Y		100			%	S0001B	None Detected	N.D.	None	
Wall ¹		Masonry			A	Y										

1 - Concrete Block

ALL DATA REPORT

Client: Hamilton-Wentworth Catholic District Sch
Location: #3019 : Classroom 23
Survey Date: 2018-07-26

Site: Elementary
Floor: 3

Building Name: St. Patrick
Room #:
Last Re-Assessment: 2022-05-30

Area (sqft): 0

ASBESTOS																
System	Component	Material	Item	Covering	A*	V*	AP*	Good	Fair	Poor	Unit	Sample	Asbestos Type	Amount	Hazard	Friable
Floor		Mastic			D	N		100(7)			%	V9500	Presumed Asbestos		Presumed Asbestos	NF
Floor		Vinyl Floor Tile (No Mastic), Pink Dense Fleck			A	Y		100			%	V0000	Non-Asbestos		None	
Structure	Deck	Concrete (poured)			C	Y										
Wall ¹		Masonry			A	Y										

1 - Concrete Block

Client: Hamilton-Wentworth Catholic District Sch
Location: #3020 : Classroom 22
Survey Date: 2018-07-26

Site: Elementary
Floor: 3

Building Name: St. Patrick
Room #:
Last Re-Assessment: 2022-05-30

Area (sqft): 0

ASBESTOS																
System	Component	Material	Item	Covering	A*	V*	AP*	Good	Fair	Poor	Unit	Sample	Asbestos Type	Amount	Hazard	Friable
Floor		Mastic			D	N		100(7)			%	V9500	Presumed Asbestos		Presumed Asbestos	NF
Floor		Vinyl Floor Tile (No Mastic), 12x12 Pink Dense Fleck			A	Y		100			%	V0000	Non-Asbestos		None	
Piping		Parging Cement	Fitting		C	Y		8(7)				V0005	Chrysotile	25-50%	Confirmed Asbestos	F
Structure	Deck	Concrete (poured)			C	Y										
Wall ¹		Masonry			A	Y										

1 - Concrete Block

ALL DATA REPORT

Client: Hamilton-Wentworth Catholic District Sch
Location: #3021 : Book Storage
Survey Date: 2018-07-26

Site: Elementary
Floor: 3

Building Name: St. Patrick
Room #:
Last Re-Assessment: 2022-05-30

Area (sqft): 0

ASBESTOS																
System	Component	Material	Item	Covering	A*	V*	AP*	Good	Fair	Poor	Unit	Sample	Asbestos Type	Amount	Hazard	Friable
Floor		Mastic			D	N		100(7)			%	V9500	Presumed Asbestos		Presumed Asbestos	NF
Floor		Vinyl Floor Tile (No Mastic), Pink Dense Fleck			A	Y		100			%	V0000	Non-Asbestos		None	
Piping ¹		Parging Cement	Fitting		C	Y		19(7)			EA	V0005	Chrysotile	25-50%	Confirmed Asbestos	F
Structure	Deck	Concrete (poured)			C	Y										
Wall ²		Masonry			A	Y										

1 - Ceiling Level
2 - Concrete Block

Client: Hamilton-Wentworth Catholic District Sch
Location: #3022 : Boys Washroom
Survey Date: 2018-07-26

Site: Elementary
Floor: 3

Building Name: St. Patrick
Room #:
Last Re-Assessment: 2022-05-30

Area (sqft): 0

ASBESTOS																
System	Component	Material	Item	Covering	A*	V*	AP*	Good	Fair	Poor	Unit	Sample	Asbestos Type	Amount	Hazard	Friable
Floor		Ceramic Tiles			A	Y										
Piping		Parging Cement	Fitting		C	Y		9(7)			EA	V0005	Chrysotile	25-50%	Confirmed Asbestos	F
Structure	Deck	Concrete (poured)			C	Y										
Wall ¹		Masonry			A	Y										

1 - Concrete Block

ALL DATA REPORT

Client: Hamilton-Wentworth Catholic District Sch
Location: #3023 : Girls Washroom
Survey Date: 2018-07-26

Site: Elementary
Floor: 3

Building Name: St. Patrick
Room #:
Last Re-Assessment: 2022-05-30

Area (sqft): 0

ASBESTOS																
System	Component	Material	Item	Covering	A*	V*	AP*	Good	Fair	Poor	Unit	Sample	Asbestos Type	Amount	Hazard	Friable
Floor		Ceramic Tiles			A	Y										
Piping ¹		Parging Cement	Fitting		C	Y		6(7)			EA	V0005	Chrysotile	25-50%	Confirmed Asbestos	F
Structure	Deck	Concrete (poured)			C	Y										
Wall ²		Masonry			A	Y										

1 - Ceiling Level
2 - Concrete Block

Client: Hamilton-Wentworth Catholic District Sch
Location: #3024 : Corridor
Survey Date: 2018-07-26

Site: Elementary
Floor: 3

Building Name: St. Patrick
Room #:
Last Re-Assessment: 2022-05-30

Area (sqft): 0

ASBESTOS																
System	Component	Material	Item	Covering	A*	V*	AP*	Good	Fair	Poor	Unit	Sample	Asbestos Type	Amount	Hazard	Friable
Ceiling	Acoustic Tile	Ceiling Tiles (lay-in), Short Fissure and Random Pinhole			C	Y		100			%	V0000	Non-Asbestos		None	
Floor		Terrazzo			A	Y										
Wall ¹		Masonry			A	Y										

1 - Concrete Block

ALL DATA REPORT

Client: Hamilton-Wentworth Catholic District Sch
Location: #3025 : Mid-Corridor
Survey Date: 2018-07-26

Site: Elementary
Floor: 3

Building Name: St. Patrick
Room #:
Last Re-Assessment: 2022-05-30

Area (sqft): 0

ASBESTOS																
System	Component	Material	Item	Covering	A*	V*	AP*	Good	Fair	Poor	Unit	Sample	Asbestos Type	Amount	Hazard	Friable
Ceiling	Acoustic Tile	Ceiling Tiles (lay-in), Short Fissure and Random Pinhole			C	Y		100			%	V0000	Non-Asbestos		None	
Floor		Terrazzo			A	Y										
Wall ¹		Masonry			A	Y										

1 - Concrete Block

Client: Hamilton-Wentworth Catholic District Sch
Location: #3026 : Corridor
Survey Date: 2018-07-26

Site: Elementary
Floor: 3

Building Name: St. Patrick
Room #:
Last Re-Assessment: 2022-05-30

Area (sqft): 0

ASBESTOS																
System	Component	Material	Item	Covering	A*	V*	AP*	Good	Fair	Poor	Unit	Sample	Asbestos Type	Amount	Hazard	Friable
Ceiling	Acoustic Tile	Ceiling Tiles (lay-in), Short Fissure and Random Pinhole			C	Y		100			%	V0000	Non-Asbestos		None	
Floor		Terrazzo			A	Y										
Wall ¹		Masonry			A	Y										

1 - Concrete Block

ALL DATA REPORT

Client: Hamilton-Wentworth Catholic District Sch
Location: #3027 : Storage
Survey Date: 2018-07-26

Site: Elementary
Floor: 3

Building Name: St. Patrick
Room #:
Last Re-Assessment: 2022-05-30

Area (sqft): 0

ASBESTOS																
System	Component	Material	Item	Covering	A*	V*	AP*	Good	Fair	Poor	Unit	Sample	Asbestos Type	Amount	Hazard	Friable
Floor		Mastic			A	Y		100(7)			%	V9500	Presumed Asbestos		Presumed Asbestos	NF
Wall		Plaster			A	Y		100			%	S0002A	None Detected	N.D.	None	

Legend:



Sample number		Units		Other	
S####	Asbestos sample collected	SF	Square feet	A	Access
V####	Material visually similar to numbered sample collected	LF	Linear feet	V	Visible
V0000	Known non-asbestos material	EA	Each	AP	Air Plenum
V9000	Visually identified as an asbestos material	%	Percentage	F	Friable material
V9500	Material is presumed to be an asbestos material			NF	Non Friable material
				PF	Potentially Friable material

Access	
A	Accessible to all building occupants
B	Accessible to maintenance and operations staff without a ladder
C	Accessible to maintenance and operations staff with a ladder. Also rarely entered, locked areas
D	Not normally accessible

Condition	
Good	No visible damage or deterioration
Fair	Minor, repairable damage, cracking, delamination or deterioration
Poor	Irreparable damage or deterioration with exposed and missing material

Visible	
Y	The material is visible when standing on the floor of the room, without the removal or opening of other building components (e.g. ceiling tiles or access panels).
N	The material is not visible to view when standing on the floor of the room and requires the removal of a building component (e.g. ceilings tiles or access panels) to view and access. Includes rarely entered crawlspaces, attic spaces, etc. Observations will be limited to the extent visible from the access points.

Air Plenum	
Yes or No	The material is in a return air plenum or in a direct airstream or there is evidence of air erosion (e.g. duct for heating or cooling blowing directly on or across an ACM). This field is only completed where Air Plenum consideration is required by regulation.

Colour Coding	
	The material is known to contain regulated concentrations of asbestos; either by analytical results or visible identification (use of the V9000 code).
	The material is presumed to contain asbestos; based on visual appearances; typically a material known to historically contain asbestos; however, not sampled due to limited access or the destructive nature of the sampling.

Action					
(1)	Clean up of ACM Debris	(2)	Precautions for Access Which may Disturb ACM Debris	(3)	ACM removal
(4)	Precautions for Work Which may Disturb ACM in Poor Condition	(5)	Proactive ACM removal (Minimum repair required for fair condition)	(6)	ACM repair
(7)	Management program and surveillance				

APPENDIX V
Drawings

NOT ALL KNOWN OR SUSPECTED ASBESTOS BUILDING MATERIALS MAY BE DEPICTED ON THE DRAWING. REFER TO THE ASBESTOS ASSESSMENT REPORT FOR A COMPLETE LIST OF KNOWN AND SUSPECTED ASBESTOS BUILDING MATERIALS.

LEGEND IS COLOUR DEPENDENT. NON-COLOUR COPIES MAY ALTER INTERPRETATION.

ASBESTOS-CONTAINING GLAZING PUTTY IS PRESENT BETWEEN GLASS AND FRAMES ON EXTERIOR WINDOWS THROUGHOUT THE BUILDING.

BASE PLAN PROVIDED BY CLIENT.



905-577-6206 www.pinchin.com

LEGEND:

- (X) LOCATION NUMBER
- ⊙ ASBESTOS BULK SAMPLE

ASBESTOS-CONTAINING MATERIALS:

- P PARGING CEMENT
- F FIRE DOOR
- T TRANSITE PANEL
- VINYL FLOOR TILES & MASTIC
- MASTIC

CLIENT:



LOCATION:

ST. PATRICK
24 SMITH AVENUE
HAMILTON, ONTARIO

TITLE:

ASBESTOS
REASSESSMENT
FLOOR LEVEL 1

DATE:

AUGUST 2022

PROJECT # :

303992.004

DRAWN BY:

EB

CHECKED BY:

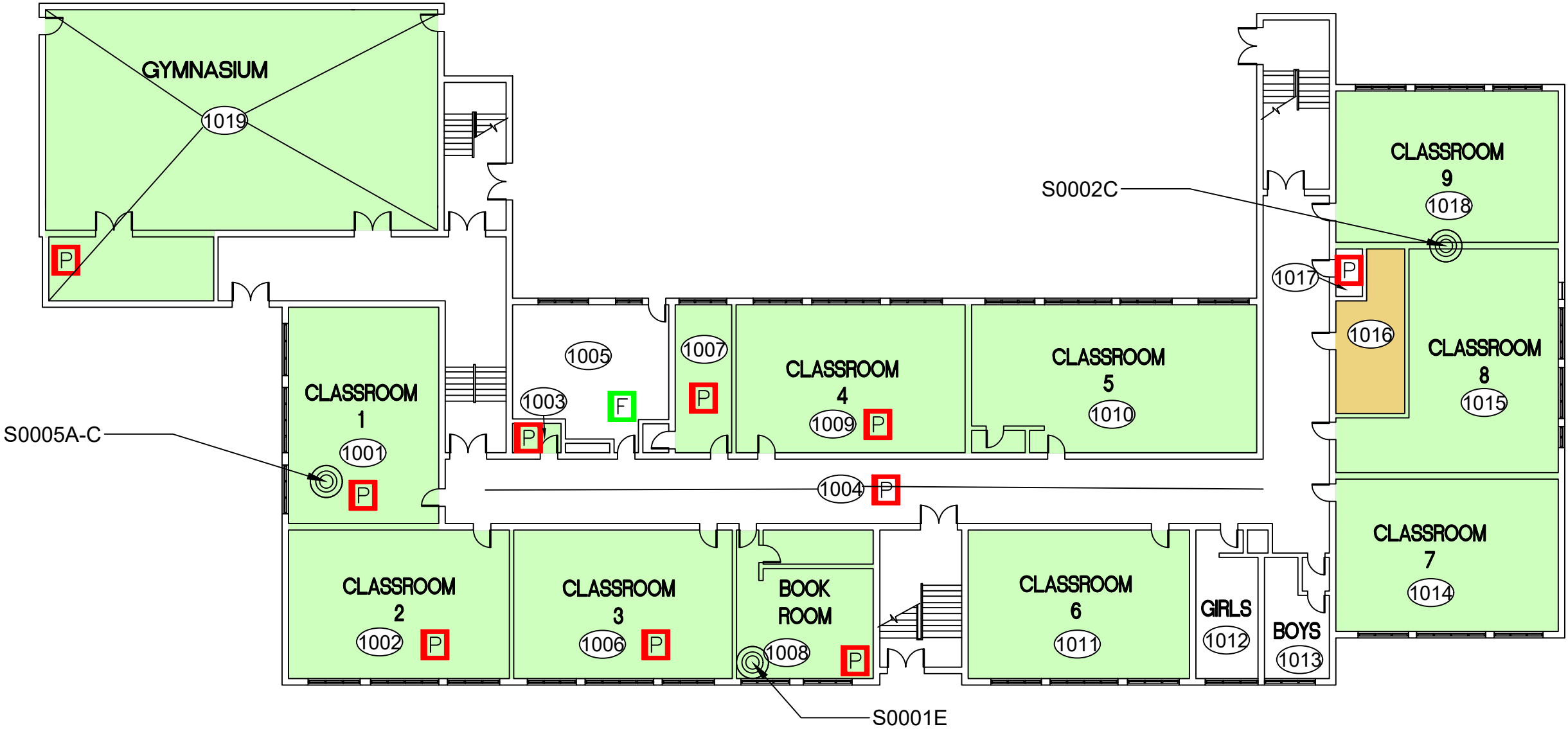
EB

SCALE:

NTS

DRAWING:

1 OF 3



NOT ALL KNOWN OR SUSPECTED ASBESTOS BUILDING MATERIALS MAY BE DEPICTED ON THE DRAWING. REFER TO THE ASBESTOS ASSESSMENT REPORT FOR A COMPLETE LIST OF KNOWN AND SUSPECTED ASBESTOS BUILDING MATERIALS.

LEGEND IS COLOUR DEPENDENT. NON-COLOUR COPIES MAY ALTER INTERPRETATION.

ASBESTOS-CONTAINING GLAZING PUTTY IS PRESENT BETWEEN GLASS AND FRAMES ON EXTERIOR WINDOWS THROUGHOUT THE BUILDING.

BASE PLAN PROVIDED BY CLIENT.



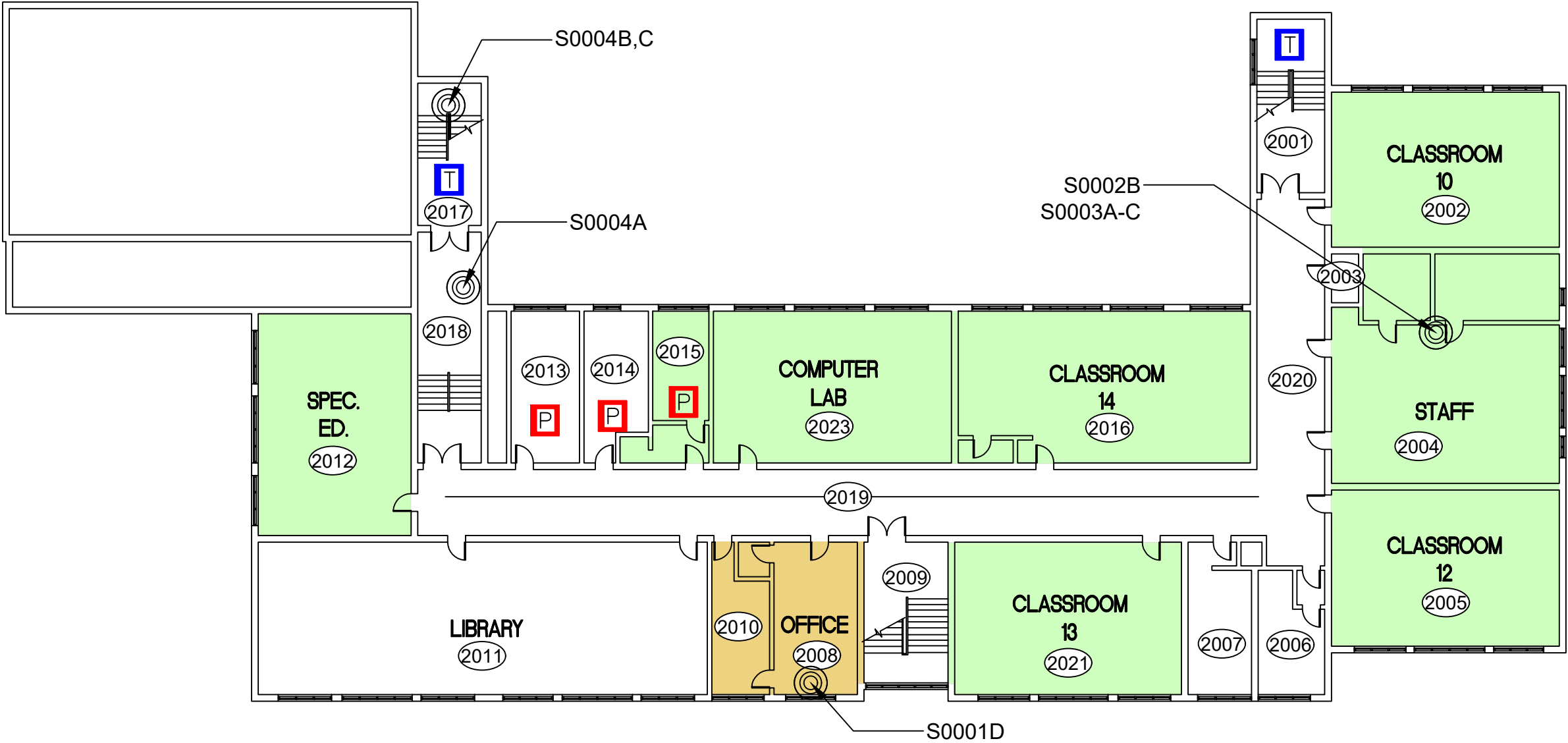
905-577-6206 www.pinchin.com

LEGEND:

- (X) LOCATION NUMBER
- ⊙ ASBESTOS BULK SAMPLE

ASBESTOS-CONTAINING MATERIALS:

- P PARGING CEMENT
- F FIRE DOOR
- T TRANSITE PANEL
- VINYL FLOOR TILES & MASTIC
- MASTIC



CLIENT:



LOCATION:

ST. PATRICK
24 SMITH AVENUE
HAMILTON, ONTARIO

TITLE:

ASBESTOS
REASSESSMENT
FLOOR LEVEL 2

DATE:

AUGUST 2022

PROJECT # :

303992.004

DRAWN BY:

EB

CHECKED BY:

EB

SCALE:

NTS

DRAWING:

2 OF 3

NOT ALL KNOWN OR SUSPECTED ASBESTOS BUILDING MATERIALS MAY BE DEPICTED ON THE DRAWING. REFER TO THE ASBESTOS ASSESSMENT REPORT FOR A COMPLETE LIST OF KNOWN AND SUSPECTED ASBESTOS BUILDING MATERIALS.

LEGEND IS COLOUR DEPENDENT. NON-COLOUR COPIES MAY ALTER INTERPRETATION.

ASBESTOS-CONTAINING GLAZING PUTTY IS PRESENT BETWEEN GLASS AND FRAMES ON EXTERIOR WINDOWS THROUGHOUT THE BUILDING.

BASE PLAN PROVIDED BY CLIENT.



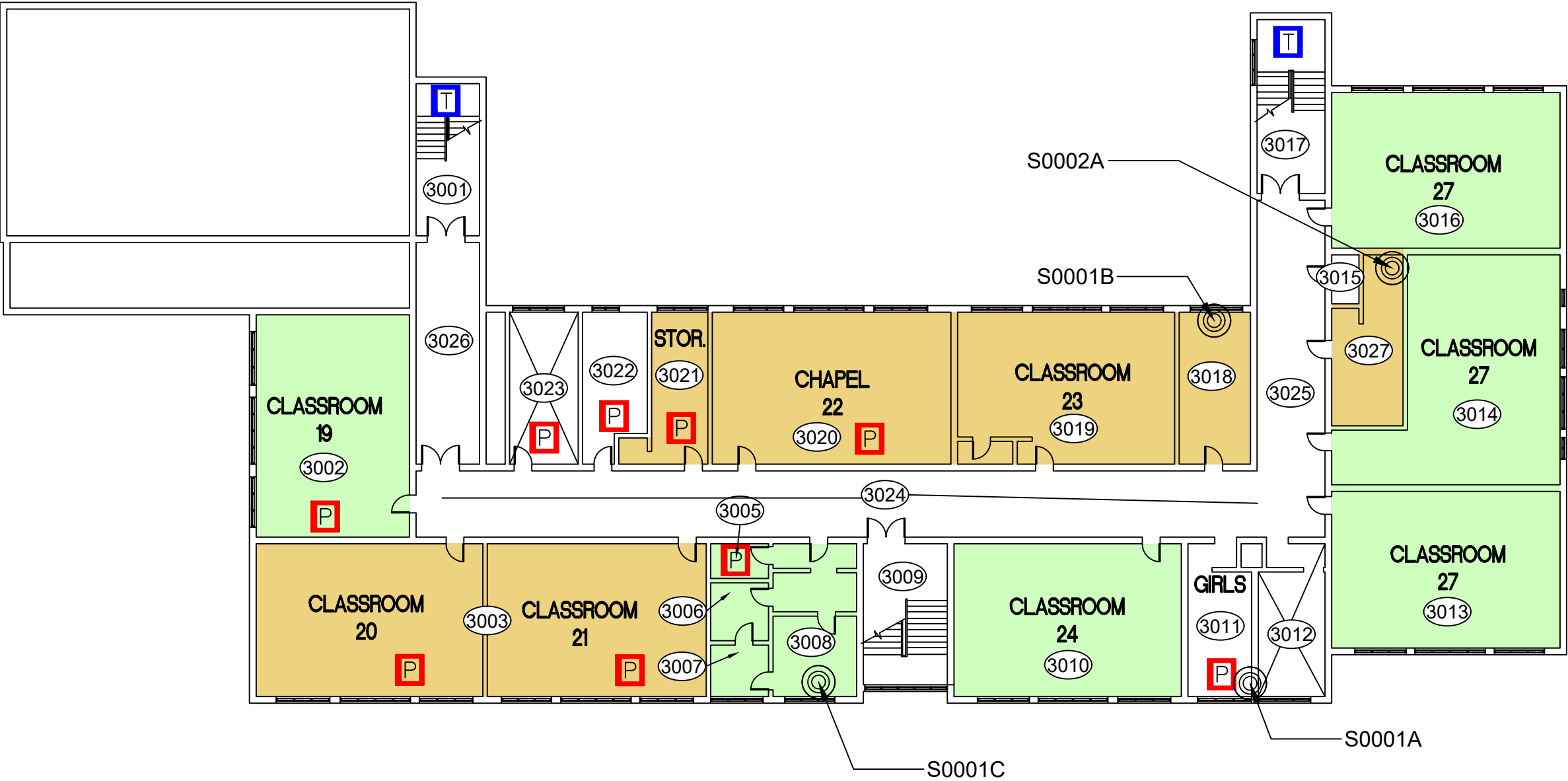
905-577-6206 www.pinchin.com

LEGEND:

- (X) LOCATION NUMBER
- ⊙ ASBESTOS BULK SAMPLE

ASBESTOS-CONTAINING MATERIALS:

- P** PARGING CEMENT
- F** FIRE DOOR
- T** TRANSITE PANEL
- VINYL FLOOR TILES & MASTIC
- MASTIC



CLIENT:



Hamilton-Wentworth
Catholic District School Board
Believing. Achieving. Serving

LOCATION:

ST. PATRICK
24 SMITH AVENUE
HAMILTON, ONTARIO

TITLE:

ASBESTOS
REASSESSMENT
FLOOR LEVEL 3

DATE:

AUGUST 2022

PROJECT # :

303992.004

DRAWN BY:

EB

CHECKED BY:

EB

SCALE:

NTS

DRAWING:

3 OF 3