



Asbestos Reassessment

St. Joachim
75 Concerto Court, Ancaster,
Ontario

Prepared for:

**Hamilton-Wentworth Catholic
District School Board**
90 Mulberry Street
Hamilton, Ontario, L8N 3R9

August 12, 2022

Pinchin File: 303992.004



Asbestos Reassessment

St. Joachim, 75 Concerto Court, Ancaster, Ontario
Hamilton-Wentworth Catholic District School Board

August 12, 2022
Pinchin File: 303992.004

Issued to: Hamilton-Wentworth Catholic District
School Board

Issued on: August 12, 2022

Pinchin File: 303992.004

Issuing Office: Hamilton, ON

Pinchin Contact: Emily Balfour, Project Manager
365.889.5147
ebalfour@pinchin.com



Author: _____

Emily Balfour
Project Manager
365.889.5147
ebalfour@pinchin.com

Reviewer: _____

Damian Palus, C.E.T.
Operations Manager
289.678.0694
dpalus@pinchin.com



EXECUTIVE SUMMARY

Hamilton-Wentworth Catholic District School Board (Client) retained Pinchin Ltd. (Pinchin) to conduct an asbestos building materials reassessment at the subject building.

The objective of the reassessment was to evaluate the condition and quantity of previously reported asbestos-containing materials (ACM), and develop corrective action plans as required for the purposes of long-term management. The results of this reassessment are not intended for construction, renovation, demolition or project tendering purposes.

Summary of Recommendations

The following is a summary of significant recommendations; refer to the body of the report for detailed recommendations:

- Perform a reassessment of asbestos materials on an annual basis.
- Perform a pre-construction assessment and remove all asbestos-containing materials (ACM) prior to alteration or maintenance work if ACM may be disturbed by the work.
- Follow appropriate safe work procedures when handling or disturbing asbestos.
- Sample any presumed ACM prior to alteration or maintenance work if presumed ACM may be disturbed by the work.

This Executive Summary is subject to the same standard limitations as contained in the report and must be read in conjunction with the entire report.



Asbestos Reassessment

St. Joachim, 75 Concerto Court, Ancaster, Ontario
Hamilton-Wentworth Catholic District School Board

August 12, 2022
Pinchin File: 303992.004

TABLE OF CONTENTS

1.0	INTRODUCTION AND SCOPE	1
1.1	Scope of Assessment	1
2.0	BACKGROUND INFORMATION	1
2.1	Building Year of Construction	1
2.2	Existing Reports	1
3.0	FINDINGS	2
3.1	Excluded Asbestos Materials	2
3.2	Confirmed/Presumed Asbestos-Containing Materials and Confirmed Non-Asbestos Materials	3
4.0	RECOMMENDATIONS	5
4.1	General	5
4.2	Remedial Work	5
4.3	On-going Management and Maintenance	5
5.0	TERMS AND LIMITATIONS	5
6.0	REFERENCES	6

APPENDICES

APPENDIX I	Asbestos Analytical Certificates
APPENDIX II	Location List
APPENDIX III	Hazardous Materials Summary / Sample Log Report
APPENDIX IV	All Data Report
APPENDIX V	Drawings



1.0 INTRODUCTION AND SCOPE

Hamilton-Wentworth Catholic District School Board (Client) retained Pinchin Ltd. (Pinchin) to conduct an asbestos building materials reassessment at St. Joachim located at 75 Concerto Court, Ancaster, Ontario.

The reassessment was performed by Emily Balfour, Project Manager on May 5, 2022.

The objectives of the reassessment were to document the locations, quantities and conditions of previously identified asbestos-containing building materials and develop corrective action plans as required. This reassessment is only to be used for the purposes of long-term management and routine maintenance. The results of this reassessment are not to be used for construction, renovation, demolition or project tendering purposes.

1.1 Scope of Assessment

The objective of the reassessment was to evaluate the condition and quantity of previously reported asbestos-containing materials (ACM's), and develop corrective action plans as required.

Refer to the Asbestos Building Materials Reassessment Methodology report and Annex A dated 2022, Pinchin File 303992.004, for the methodology used during the reassessment.

2.0 BACKGROUND INFORMATION

2.1 Building Year of Construction

Item	Details
Year of Construction	1990

2.2 Existing Reports

2.2.1 Review of Previous Reports

Pinchin previously prepared the following report, which has been reviewed and relied upon as part of this assessment:

- Asbestos Assessment, St. Joachim, 75 Concerto Court, Ancaster, Ontario, September 2018, Prepared by Pinchin Ltd., Pinchin File: 224334.
- Asbestos Reassessment, St. Joachim, 75 Concerto Court, Ancaster, Ontario, August 2019, Prepared by Pinchin Ltd., Pinchin File: 243241.
- Asbestos Reassessment, St. Joachim, 75 Concerto Court, Ancaster, Ontario, July 2020, Prepared by Pinchin Ltd., Pinchin File: 272113.



- Asbestos Reassessment, St. Joachim, 75 Concerto Court, Ancaster, Ontario, June 2021, Prepared by Pinchin Ltd., Pinchin File: 286533.001.

3.0 FINDINGS

The following section summarizes the findings of the reassessment and provides a general description of the asbestos materials identified. For details on quantities, assessment, sample numbers, friability, condition, and locations of asbestos materials; refer to the Hazardous Materials Summary / Sample Log Report and All Data Report in Appendix III and IV, respectively.

Previous analytical sample results have been relied upon and were included in the original asbestos assessment report completed by MTE Consultants Inc. Additional samples results where collected by Pinchin have been included in Appendix I.


3.1 Excluded Asbestos Materials




A number of materials which might contain asbestos were not sampled during this reassessment due to limitations in scope and methodology. Where present, these materials are assumed to contain asbestos until otherwise proven by sampling and analysis. These materials are not shown on the drawings in Appendix V. Excluded materials presumed to contain asbestos include:

Material	Friability
Firestopping	Potentially friable
Electrical components or wiring within control centers, breakers, motors or lights, insulation on wiring	Non-friable
Vermiculite in concrete block wall cavities	Friable
Adhesives and duct mastics	Non-friable
Caulking and butyl seals	Non-friable
Paper products	Non-friable
Soffit and fascia boards	Non-friable
Mechanical packing, ropes and gaskets	Non-friable
Ceramic tile thin-set	Non-friable

3.2 Confirmed/Presumed Asbestos-Containing Materials and Confirmed Non-Asbestos Materials

This section includes materials that have been confirmed asbestos-containing by sample analysis or presumed asbestos-containing by visual identification. Refer to the drawings in Appendix V for the locations of confirmed and presumed ACMs indicated via hatching or symbols. The locations of samples from the historical assessments, performed by Pinchin, have been included on the drawings.

Material and Application	Asbestos Type/Friability	Photo
Pipes are either uninsulated or insulated with non-asbestos fibreglass or elastomeric insulation (Armaflex).	None	
Ducts are either uninsulated or insulated with non-asbestos fibreglass.	None	
Mechanical equipment is either uninsulated or insulated with non-asbestos fibreglass.	None	
All ceiling tiles are presumed to be non-asbestos based on the age of the building (1990)	None	
Asbestos in drywall joint compound was banned in Canada in 1980. Drywall joint compound in the building was installed after 1986 (1980 plus a reasonable non-compliance period based on our experience) and is assumed to contain no asbestos.	None	
Vinyl floor tiles, 12"x12", pink with pink and white fleck, are present.	None (tile) None (mastic)	

Material and Application	Asbestos Type/Friability	Photo
Vinyl floor tiles, 12"x12", pink oatmeal, are present.	None (tile) None (mastic)	
Vinyl floor tiles, 12"x12", grey oatmeal, are present.	None (tile) None (mastic)	
Remaining vinyl floor tiles and mastic are presumed to contain asbestos until sampling proves otherwise.	Presumed/Non-friable (tile) Presumed/Non-friable (mastic)	
Gold mastic is present as a sink undercoating.	Chrysotile/Non-Friable	



Additional notes on the vinyl floor tiles and mastic discussed above:

- Mastic was analysed for asbestos content where it was present on the tiles, however a comprehensive testing program for mastic was not performed.

4.0 RECOMMENDATIONS

4.1 General

Perform a detailed intrusive assessment prior to building renovation or demolition operations. The assessment should include; destructive testing (i.e. coring and/or removal of building finishes and components), sampling of other hazardous materials (lead, mercury, PCBs, mould, etc.), and materials not tested in this study (i.e. excluded asbestos materials).

4.2 Remedial Work

There is no remedial work recommended.

4.3 On-going Management and Maintenance

The following recommendations are made regarding on-going management and maintenance work involving the asbestos materials identified.

4.3.1 Asbestos

Maintain the Asbestos Management Program (AMP).

Perform a re-assessment of asbestos materials on an annual basis.

Remove asbestos-containing materials (ACM) prior to alteration or maintenance work if ACM may be disturbed by the work. Follow appropriate asbestos precautions for the classification of work being performed.

Sample presumed ACM prior to alteration or maintenance work if the presumed ACM may be disturbed by the work.

Update the asbestos inventory report upon completion of any abatement and removal of asbestos-containing materials.

5.0 TERMS AND LIMITATIONS

This work was performed subject to the Terms and Limitations presented or referenced in the proposal for this project.



Information provided by Pinchin is intended for Client use only. Pinchin will not provide results or information to any party unless disclosure by Pinchin is required by law. Any use by a third party of reports or documents authored by Pinchin or any reliance by a third party on or decisions made by a third party based on the findings described in said documents, is the sole responsibility of such third parties. Pinchin accepts no responsibility for damages suffered by any third party as a result of decisions made or actions conducted. No other warranties are implied or expressed.

6.0 REFERENCES

The following legislation and documents were referenced in completing the assessment and this report:

1. Asbestos on Construction Projects and in Buildings and Repair Operations, Ontario Regulation 278/05.
2. Designated Substances, Ontario Regulation 490/09.

\\pinchin.com\ham\Job\303000s\0303992.000 HWCDSB, Various2022Projects, ASB, CONS\0303992.004
HWCDSB, AllFacilities, 2022, ASB, REASSMT\Deliverables\Elementary\St. Joachim\Report\303992.004 St. Joachim ACM Reassessment Report HWCDSB August 12 2022.docx

Template: Master Report for Asbestos Reassessment, HAZ, April 23, 2019

APPENDIX I
Asbestos Analytical Certificates



Your Project #: 230748

Site Location: ST.JOACHIM CATHOLIC ELEMENTARY SCHOOL,
75 CONCERTO COURT, ANCASTER, ONTARIO

Your C.O.C. #: na

Attention: Michael Maiorana

Pinchin Ltd
Unit 6
875 Main St W
Hamilton, ON
CANADA L8S 4R9

Report Date: 2019/08/07

Report #: R5829059

Version: 2 - Revision

CERTIFICATE OF ANALYSIS – REVISED REPORT

BV LABS JOB #: B9K9706

Received: 2019/07/30, 08:57

Sample Matrix: Solid
Samples Received: 6

Analyses	Quantity	Date Extracted	Date Analyzed	Laboratory Method	Reference
Asbestos by PLM - 0.5 RDL (1)	6	N/A	2019/08/02	COR3SOP-00002	EPA 600R-93/116

Remarks:

Bureau Veritas Laboratories are accredited to ISO/IEC 17025 for specific parameters on scopes of accreditation. Unless otherwise noted, procedures used by BV Labs are based upon recognized Provincial, Federal or US method compendia such as CCME, MELCC, EPA, APHA.

All work recorded herein has been done in accordance with procedures and practices ordinarily exercised by professionals in BV Labs profession using accepted testing methodologies, quality assurance and quality control procedures (except where otherwise agreed by the client and BV Labs in writing). All data is in statistical control and has met quality control and method performance criteria unless otherwise noted. All method blanks are reported; unless indicated otherwise, associated sample data are not blank corrected. Where applicable, unless otherwise noted, Measurement Uncertainty has not been accounted for when stating conformity to the referenced standard.

BV Labs liability is limited to the actual cost of the requested analyses, unless otherwise agreed in writing. There is no other warranty expressed or implied. BV Labs has been retained to provide analysis of samples provided by the Client using the testing methodology referenced in this report. Interpretation and use of test results are the sole responsibility of the Client and are not within the scope of services provided by BV Labs, unless otherwise agreed in writing. BV Labs is not responsible for the accuracy or any data impacts, that result from the information provided by the customer or their agent.

Solid sample results, except biota, are based on dry weight unless otherwise indicated. Organic analyses are not recovery corrected except for isotope dilution methods.

Results relate to samples tested. When sampling is not conducted by BV Labs, results relate to the supplied samples tested.

This Certificate shall not be reproduced except in full, without the written approval of the laboratory.

Bureau Veritas Laboratories' Asbestos Laboratory is accredited by NVLAP for bulk asbestos analysis by polarized light microscopy, NVLAP Code 600136-0.

This report may not be reproduced, except in full, without the written approval of Bureau Veritas Laboratories. This report may not be used by the client to claim product endorsement by NVLAP, NIST or any other agency of the U.S. Government.

Bureau Veritas Laboratories' scope of accreditation includes EPA-600/M4-82-020: "Interim Method for the Determination of Asbestos in Bulk Insulation Samples" and EPA-600/R-93/116: "Method for the Determination of Asbestos in Bulk Building Materials".

Reference Method suffix "m" indicates test methods incorporate validated modifications from specific reference methods to improve performance.

* RPDs calculated using raw data. The rounding of final results may result in the apparent difference.

(1) P.O.B. - Percent of Bulk

When Asbestos data is reported with other data, this report contains data that are not covered by the NVLAP accreditation.



Your Project #: 230748

Site Location: ST.JOACHIM CATHOLIC ELEMENTARY SCHOOL,
75 CONCERTO COURT, ANCASTER, ONTARIO

Your C.O.C. #: na

Attention: Michael Maiorana

Pinchin Ltd
Unit 6
875 Main St W
Hamilton, ON
CANADA L8S 4R9

Report Date: 2019/08/07

Report #: R5829059

Version: 2 - Revision

CERTIFICATE OF ANALYSIS – REVISED REPORT

BV LABS JOB #: B9K9706

Received: 2019/07/30, 08:57

Encryption Key

Please direct all questions regarding this Certificate of Analysis to your Project Manager.

Antonella Brasil, Senior Project Manager

Email: Antonella.Brasil@bvlabs.com

Phone# (905)817-5817

=====

BV Labs has procedures in place to guard against improper use of the electronic signature and have the required "signatories", as per ISO/IEC 17025, signing the reports. For Service Group specific validation please refer to the Validation Signature Page.



BV Labs Job #: B9K9706
Report Date: 2019/08/07

Pinchin Ltd
Client Project #: 230748
Site Location: ST.JOACHIM CATHOLIC ELEMENTARY SCHOOL,
75 CONCERTO COURT, ANCASTER, ONTARIO
Sampler Initials: MM

Asbestos Analytical Results

EPA/600R-93/116 by Polarized Light Microscopy

S0001A 12"X12" VINYL FLOOR TILES, PINK WITH PINK AND WHITE FLECK, CLASSROOM 3					
BV Labs ID: KJW735		Date Analyzed: 2019/08/01			
	P.O.B	Sample Morphology	Asbestos	Other Fibres	Particulate
Layer 1	98	Homogeneous pink vinyl floor tile	Not Detected		Non-Fibrous
Layer 2	2	Non-homogeneous black/yellow mastic	Not Detected		Tar Non-Fibrous

S0001B 12"X12" VINYL FLOOR TILES, PINK OATMEAL, CLASSROOM 5					
BV Labs ID: KJW736		Date Analyzed: 2019/08/01			
	P.O.B	Sample Morphology	Asbestos	Other Fibres	Particulate
Layer 1	98	Homogeneous pink vinyl floor tile	Not Detected		Non-Fibrous
Layer 2	2	Non-homogeneous black/yellow mastic	Not Detected		Tar Non-Fibrous

The limit of quantitation is 0.50%, although asbestos may be qualitatively detected at concentrations less than 0.50%. Samples for which asbestos is detected at <0.50% are reported as trace, "<0.50%". "Not Detected" indicates that no asbestos fibres were observed.

Calibrated Visual Estimate (%)
Date Format : yyyy/mm/dd



BV Labs Job #: B9K9706
Report Date: 2019/08/07

Pinchin Ltd
Client Project #: 230748
Site Location: ST.JOACHIM CATHOLIC ELEMENTARY SCHOOL,
75 CONCERTO COURT, ANCASTER, ONTARIO
Sampler Initials: MM

Asbestos Analytical Results

EPA/600R-93/116 by Polarized Light Microscopy

S0001C 12"X12" VINYL FLOOR TILES, PINK OATMEAL, STAFF WASHROOM					
BV Labs ID: KJW737		Date Analyzed: 2019/08/01			
	P.O.B	Sample Morphology	Asbestos	Other Fibres	Particulate
Layer 1	98	Homogeneous grey vinyl floor tile	Not Detected		Non-Fibrous
Layer 2	2	Homogeneous black mastic	Not Detected		Tar Non-Fibrous

S0002A GOLD SINK UNDERCOATING, CLASSROOM 14					
BV Labs ID: KJW738		Date Analyzed: 2019/08/01			
	P.O.B	Sample Morphology	Asbestos	Other Fibres	Particulate
Layer 1	100	Homogeneous black undercoating	Chrysotile 2%		Tar Non-Fibrous

S0002B GOLD SINK UNDERCOATING, CLASSROOM 4					
BV Labs ID: KJW739		Date Analyzed: 2019/08/01			
	P.O.B	Sample Morphology	Asbestos	Other Fibres	Particulate
Layer 1			N/A		
Comment: Not analyzed - positive stop					

The limit of quantitation is 0.50%, although asbestos may be qualitatively detected at concentrations less than 0.50%. Samples for which asbestos is detected at <0.50% are reported as trace, "<0.50%". "Not Detected" indicates that no asbestos fibres were observed.

Calibrated Visual Estimate (%)
Date Format : yyyy/mm/dd



BUREAU
VERITAS

BV Labs Job #: B9K9706
Report Date: 2019/08/07

Pinchin Ltd
Client Project #: 230748
Site Location: ST.JOACHIM CATHOLIC ELEMENTARY SCHOOL,
75 CONCERTO COURT, ANCASTER, ONTARIO
Sampler Initials: MM

Asbestos Analytical Results

EPA/600R-93/116 by Polarized Light Microscopy

S0002C GOLD SINK UNDERCOATING, CLASSROOM 6					
BV Labs ID: KJW740		Date Analyzed: 2019/08/01			
	<u>P.O.B</u>	<u>Sample Morphology</u>	<u>Asbestos</u>	<u>Other Fibres</u>	<u>Particulate</u>
Layer 1			N/A		
Comment: Not analyzed - positive stop					

The limit of quantitation is 0.50%, although asbestos may be qualitatively detected at concentrations less than 0.50%. Samples for which asbestos is detected at <0.50% are reported as trace, "<0.50%". "Not Detected" indicates that no asbestos fibres were observed.

Calibrated Visual Estimate (%)
Date Format : yyyy/mm/dd



BUREAU
VERITAS

BV Labs Job #: B9K9706
Report Date: 2019/08/07

Pinchin Ltd
Client Project #: 230748
Site Location: ST.JOACHIM CATHOLIC ELEMENTARY SCHOOL,
75 CONCERTO COURT, ANCASTER, ONTARIO
Sampler Initials: MM

GENERAL COMMENTS

Revised Report (2019/08/07): St. Joachim Catholic Elementary School, 75 Concerto Court, Ancaster, Ontario included in the Site Location, as per client request .

Results relate only to the items tested.



BUREAU
VERITAS

BV Labs Job #: B9K9706
Report Date: 2019/08/07

Pinchin Ltd
Client Project #: 230748
Site Location: ST.JOACHIM CATHOLIC ELEMENTARY SCHOOL,
75 CONCERTO COURT, ANCASTER, ONTARIO
Sampler Initials: MM

VALIDATION SIGNATURE PAGE

The analytical data and all QC contained in this report were reviewed and validated by the following individual(s).

Banu Gurgen-Keough, Supervisor

BV Labs has procedures in place to guard against improper use of the electronic signature and have the required "signatories", as per ISO/IEC 17025, signing the reports.
For Service Group specific validation please refer to the Validation Signature Page.

APPENDIX II
Location List

Client:Hamilton-Wentworth Catholic District Sch
Building Name: St. Joachim
Survey Date: 2018-06-29

Site: 75 Concerto Court, Ancaster, ON
Last Re-Assessment: 2022-05-05

Location No.	Name or Description	Area ft ²	Floor No.	Bldg. Phase	Notes
1001	Entire Building	0		A	

APPENDIX III

Hazardous Materials Summary / Sample Log Report

Client: Hamilton-Wentworth Catholic District Sch

Site: 75 Concerto Court, Ancaster, ON

Building Name: St. Joachim

Survey Date: 2018-06-29

HAZMAT	Sample No	System/Component/Material/Sample Description	Locations	Bldg. Phase	LF	SF	EA	%	Type	Positive	Friability
Asbestos	S0001 A	Floor Vinyl Floor Tile And Mastic	1001	A	0	0	0	100	None Detected	No	
Asbestos	S0002 ABC	Other Sink Mastic, Gold Undercoating	1001	A	0	0	14	0	Chrysotile	Yes	NF
Asbestos	V9500	Duct Mastic	1001	A	0	0	0	100	Presumed Asbestos	Yes	NF
Asbestos	V9500	Floor Mastic	1001	A	0	0	0	100	Presumed Asbestos	Yes	NF
Asbestos	V9500	Floor Vinyl Floor Tile And Mastic 12x12 Beige With Brown And White Streaks, 12x12 Green Oatmeal, 12x12 Grey W White And Dark Grey Streak	1001	A	0	0	0	100	Presumed Asbestos	Yes	NF
Asbestos	V9500	Other Caulking	1001	A	0	0	0	100	Presumed Asbestos	Yes	NF
Asbestos	V9500	Piping All Gasket	1001	A	0	0	0	100	Presumed Asbestos	Yes	NF
Asbestos	V9500	Wall Vermiculite/concrete Block Walls	1001	A	0	0	0	100	Presumed Asbestos	Yes	F
Asbestos	V0000	Ceiling Ceiling Tiles (lay-in)	1001	A	0	0	0	75	Non Asbestos	No	
Asbestos	V0000	Ceiling Drywall And Joint Compound	1001	A	0	0	0	25	Non Asbestos	No	
Asbestos	V0000	Duct Fibreglass	1001	A	0	0	0	100	Non Asbestos	No	
Asbestos	V0000	Floor Ceramic Tiles	1001	A	0	0	0	25	Non Asbestos	No	
Asbestos	V0000	Floor Laminate	1001	A	0	0	0	0	Non Asbestos	No	
Asbestos	V0000	Floor Vinyl Floor Tile And Mastic 12x12 Grey Oatmeal (sample S0001c)	1001	A	0	0	0	100	Non Asbestos	No	
Asbestos	V0000	Floor Vinyl Floor Tile And Mastic 12x12 Pink Oatmeal (sample S0001b)	1001	A	0	0	0	100	Non Asbestos	No	
Asbestos	V0000	Mechanical Equipment All Fibreglass	1001	A	0	0	0	100	Non Asbestos	No	
Asbestos	V0000	Other Drain Metal	1001	A	0	0	0	100	Non Asbestos	No	
Asbestos	V0000	Piping All Fibreglass	1001	A	0	0	0	100	Non Asbestos	No	
Asbestos	V0000	Piping All Not Insulated	1001	A	0	0	0	100	Non Asbestos	No	
Asbestos	V0000	Structure All Metal	1001	A	0	0	0	100	Non Asbestos	No	
Asbestos	V0000	Wall Drywall And Joint Compound	1001	A	0	0	0	25	Non	No	

HAZMAT	Sample No	System/Component/Material/Sample Description	Locations	Bldg. Phase	LF	SF	EA	%	Type	Positive	Friability
									Asbestos		
Asbestos	V0000	Wall Masonry	1001	A	0	0	0	75	Non Asbestos	No	

Legend:

Sample number		Units			
S####	Asbestos sample collected	SF	Square feet	NF	Non Friable material.
L####	Paint sample collected	LF	Linear feet	F	Friable material
P####	PCB sample collected	EA	Each	PF	Potentially Friable material
M####	Mould sample collected	%	Percentage		
V####	Material visually similar to numbered sample collected				
V0000	Known non Hazardous Material				
V9000	Material is visually identified as Hazardous Material				
V9500	Material is presumed to be Hazardous Material				
[Loc. No.]	Abated Material				

APPENDIX IV
All Data Report

ALL DATA REPORT

Client: Hamilton-Wentworth Catholic District Sch
Location: #1001 : Entire Building
Survey Date: 2018-06-29

Site: Elementary
Floor:

Building Name: St. Joachim
Room #:
Last Re-Assessment: 2022-05-05

Area (sqft): 0

ASBESTOS																
System	Component	Material	Item	Covering	A*	V*	AP*	Good	Fair	Poor	Unit	Sample	Asbestos Type	Amount	Hazard	Friable
Ceiling		Ceiling Tiles (lay-in)	ALL		C	Y		75			%	V0000	Non-Asbestos		None	
Ceiling		Drywall and joint compound	ALL		C	Y		25			%	V0000	Non-Asbestos		None	
Duct		Fibreglass	ALL		C	N		100			%	V0000	Non-Asbestos		None	
Duct		Mastic			C	N		100(7)			%	V9500	Presumed Asbestos		Presumed Asbestos	NF
Floor		Vinyl Floor Tile and Mastic, 12x12 grey oatmeal (sample S0001C)			A	Y		100			%	V0000	Non-Asbestos		None	
Floor		Vinyl Floor Tile and Mastic, 12x12 pink with pink and white fleck			A	Y		100			%	S0001A	None Detected	N.D.	None	
Floor		Vinyl Floor Tile and Mastic, 12x12 pink oatmeal (sample S0001B)			A	Y		100			%	V0000	Non-Asbestos		None	
Floor		Vinyl Floor Tile and Mastic, 12x12 green oatmeal			A	Y		100(7)			%	V9500	Presumed Asbestos		Presumed Asbestos	NF
Floor		Vinyl Floor Tile and Mastic, 12x12 beige with brown and white streaks			A	Y		100(7)			%	V9500	Presumed Asbestos		Presumed Asbestos	NF
Floor		Vinyl Floor Tile and Mastic, 12x12 grey w white and dark grey streak			A	Y		100(7)			%	V9500	Presumed Asbestos		Presumed Asbestos	NF
Floor		Ceramic Tiles	ALL		A	Y		25			%	V0000	Non-Asbestos		None	
Floor		Laminate			A	Y						V0000	Non-Asbestos		None	
Floor		Mastic		Laminate	D	N		100(7)			%	V9500	Presumed Asbestos		Presumed Asbestos	NF
Mechanical Equipment	All	Fibreglass	ALL		B	Y		100			%	V0000	Non-Asbestos		None	
Other		Caulking			A	Y		100(7)			%	V9500	Presumed Asbestos		Presumed Asbestos	NF
Other	Drain	Metal	ALL		C	N		100			%	V0000	Non-Asbestos		None	
Other	Sink	Mastic, Gold, undercoating			A	N		14(7)			EA	S0002ABC	Chrysotile	0.5-5%	Confirmed Asbestos	NF
Piping	All	Fibreglass	ALL		C	N		100			%	V0000	Non-Asbestos		None	
Piping	All	Not Insulated	ALL		C	N		100			%	V0000	Non-Asbestos		None	
Piping	All	Gasket			D	N		100(7)			%	V9500	Presumed Asbestos		Presumed Asbestos	NF
Structure	All	Metal			C	N		100			%	V0000	Non-Asbestos		None	
Wall		Drywall and joint compound	ALL		A	Y		25			%	V0000	Non-Asbestos		None	
Wall		Masonry	ALL		A	Y		75			%	V0000	Non-Asbestos		None	
Wall		Vermiculite/concrete block walls			D	N		100(7)			%	V9500	Presumed Asbestos		Presumed Asbestos	F

Legend:



Sample number		Units		Other	
S####	Asbestos sample collected	SF	Square feet	A	Access
V####	Material visually similar to numbered sample collected	LF	Linear feet	V	Visible
V0000	Known non-asbestos material	EA	Each	AP	Air Plenum
V9000	Visually identified as an asbestos material	%	Percentage	F	Friable material
V9500	Material is presumed to be an asbestos material			NF	Non Friable material
				PF	Potentially Friable material

Access	
A	Accessible to all building occupants
B	Accessible to maintenance and operations staff without a ladder
C	Accessible to maintenance and operations staff with a ladder. Also rarely entered, locked areas
D	Not normally accessible

Condition	
Good	No visible damage or deterioration
Fair	Minor, repairable damage, cracking, delamination or deterioration
Poor	Irreparable damage or deterioration with exposed and missing material

Visible	
Y	The material is visible when standing on the floor of the room, without the removal or opening of other building components (e.g. ceiling tiles or access panels).
N	The material is not visible to view when standing on the floor of the room and requires the removal of a building component (e.g. ceilings tiles or access panels) to view and access. Includes rarely entered crawlspaces, attic spaces, etc. Observations will be limited to the extent visible from the access points.

Air Plenum	
Yes or No	The material is in a return air plenum or in a direct airstream or there is evidence of air erosion (e.g. duct for heating or cooling blowing directly on or across an ACM). This field is only completed where Air Plenum consideration is required by regulation.

Colour Coding	
	The material is known to contain regulated concentrations of asbestos; either by analytical results or visible identification (use of the V9000 code).
	The material is presumed to contain asbestos; based on visual appearances; typically a material known to historically contain asbestos; however, not sampled due to limited access or the destructive nature of the sampling.

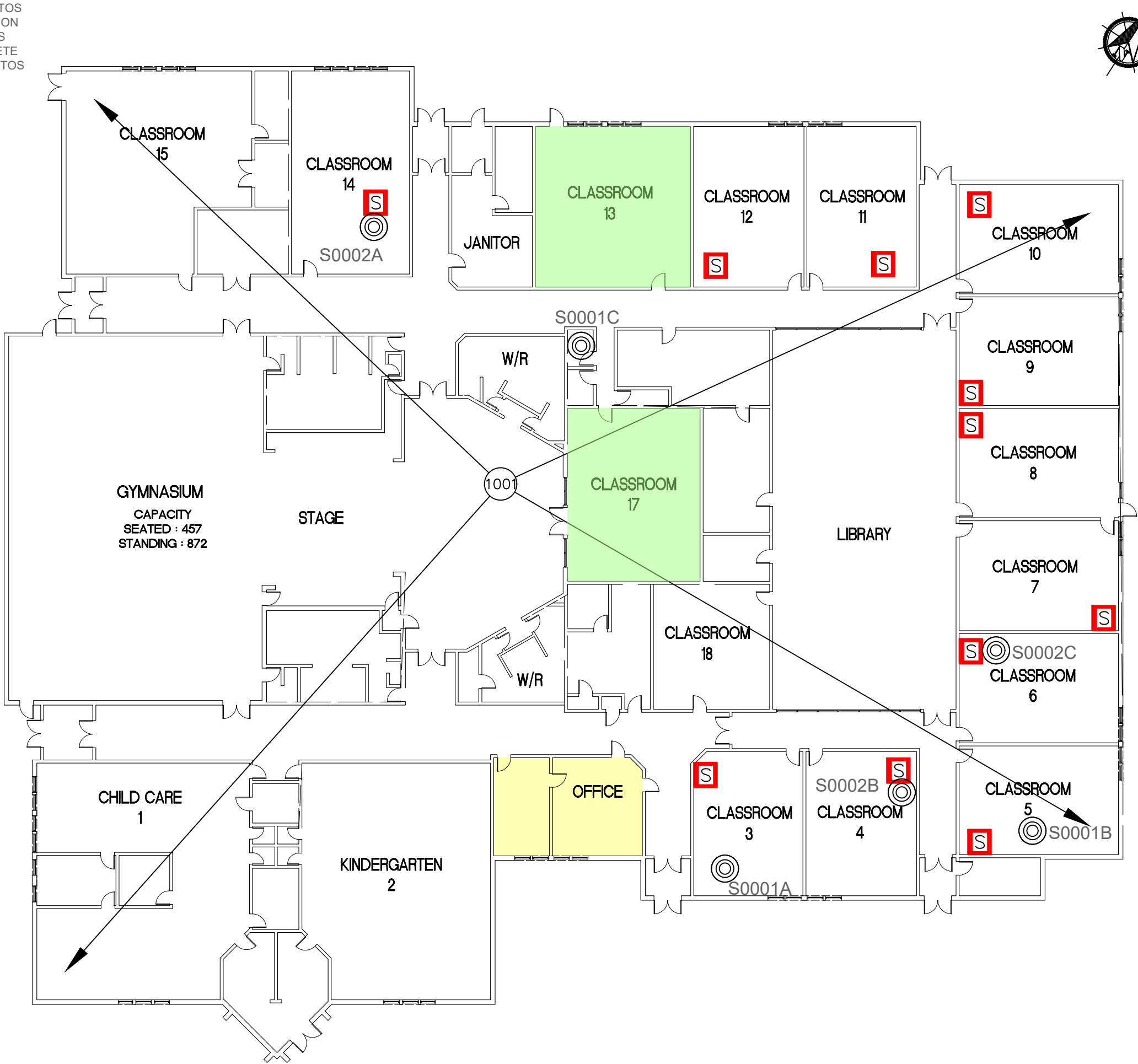
Action					
(1)	Clean up of ACM Debris	(2)	Precautions for Access Which may Disturb ACM Debris	(3)	ACM removal
(4)	Precautions for Work Which may Disturb ACM in Poor Condition	(5)	Proactive ACM removal (Minimum repair required for fair condition)	(6)	ACM repair
(7)	Management program and surveillance				

APPENDIX V
Drawings

NOT ALL KNOWN OR SUSPECTED ASBESTOS BUILDING MATERIALS MAY BE DEPICTED ON THE DRAWING. REFER TO THE ASBESTOS REASSESSMENT REPORT FOR A COMPLETE LIST OF KNOWN AND SUSPECTED ASBESTOS BUILDING MATERIALS.

LEGEND IS COLOUR DEPENDENT. NON-COLOUR COPIES MAY ALTER INTERPRETATION.

BASE PLAN PROVIDED BY CLIENT.



905-577-6206 www.pinchin.com

LEGEND:

- (X) LOCATION NUMBER
- (S) ASBESTOS BULK SAMPLE

ASBESTOS-CONTAINING MATERIALS:

- (S) SINK UNDERCOATING
- (Green) VINYL FLOOR TILES & MASTIC
- (Yellow) MASTIC

CLIENT:



Hamilton-Wentworth
Catholic District School Board
Believing. Achieving. Serving

LOCATION: ST. JOACHIM
75 CONCERTO COURT
ANCASTER, ONTARIO

TITLE:
ASBESTOS REASSESSMENT
FLOOR LEVEL 1

DATE: AUGUST 2022	PROJECT # : 303992.004
DRAWN BY: EB	DRAWING: 1 OF 1
CHECKED BY: EB	
SCALE: NTS	