



Asbestos Reassessment

St. David
33 Cromwell Crescent, Hamilton,
Ontario

Prepared for:

**Hamilton-Wentworth Catholic
District School Board**

90 Mulberry Street
Hamilton, Ontario, L8N 3R9

August 23, 2022

Pinchin File: 303992.004



Asbestos Reassessment

St. David, 33 Cromwell Crescent, Hamilton, Ontario
Hamilton-Wentworth Catholic District School Board

August 23, 2022
Pinchin File: 303992.004

Issued to: Hamilton-Wentworth Catholic District
School Board

Issued on: August 23, 2022

Pinchin File: 303992.004

Issuing Office: Hamilton, ON

Pinchin Contact: Emily Balfour, Project Manager
365.889.5147
ebalfour@pinchin.com



Hamilton-Wentworth
Catholic District School Board
Believing, Achieving, Serving

Author: _____
Emily Balfour
Project Manager
365.889.5147
ebalfour@pinchin.com

Reviewer: _____
Damian Palus, C.E.T.
Operations Manager
289.678.0694
dpalus@pinchin.com



EXECUTIVE SUMMARY

Hamilton-Wentworth Catholic District School Board (Client) retained Pinchin Ltd. (Pinchin) to conduct an asbestos building materials reassessment at the subject building.

The objective of the reassessment was to evaluate the condition and quantity of previously reported asbestos-containing materials (ACM), and develop corrective action plans as required for the purposes of long-term management. The results of this reassessment are not intended for construction, renovation, demolition or project tendering purposes.

Summary of Recommendations

The following is a summary of significant recommendations; refer to the body of the report for detailed recommendations:

- Perform a pre-construction assessment and remove all asbestos-containing materials (ACM) prior to alteration or maintenance work if ACM may be disturbed by the work.
- Follow appropriate safe work procedures when handling or disturbing asbestos.
- Sample any presumed ACM prior to alteration or maintenance work if presumed ACM may be disturbed by the work.

This Executive Summary is subject to the same standard limitations as contained in the report and must be read in conjunction with the entire report.



Asbestos Reassessment

St. David, 33 Cromwell Crescent, Hamilton, Ontario
Hamilton-Wentworth Catholic District School Board

August 23, 2022
Pinchin File: 303992.004

TABLE OF CONTENTS

1.0	INTRODUCTION AND SCOPE	1
1.1	Scope of Assessment	1
2.0	BACKGROUND INFORMATION	1
2.1	Building Year of Construction	1
2.2	Existing Reports.....	1
3.0	FINDINGS	2
3.1	Excluded Asbestos Materials	2
3.2	Confirmed/Presumed Asbestos-Containing Materials and Confirmed Non-Asbestos Materials	3
4.0	RECOMMENDATIONS.....	5
4.1	General	5
4.2	On-going Management and Maintenance	5
5.0	TERMS AND LIMITATIONS	6
6.0	REFERENCES.....	6

APPENDICES

APPENDIX I	Asbestos Analytical Certificates
APPENDIX II	Location List
APPENDIX III	Hazardous Materials Summary / Sample Log Report
APPENDIX IV	All Data Report
APPENDIX V	Drawings



Asbestos Reassessment

St. David, 33 Cromwell Crescent, Hamilton, Ontario
Hamilton-Wentworth Catholic District School Board

August 23, 2022
Pinchin File: 303992.004

1.0 INTRODUCTION AND SCOPE

Hamilton-Wentworth Catholic District School Board (Client) retained Pinchin Ltd. (Pinchin) to conduct an asbestos building materials reassessment at St. David located at 33 Cromwell Crescent, Hamilton, Ontario.

The reassessment was performed by Emily Balfour, Project Manager on May 10, 2022.

The objectives of the reassessment were to document the locations, quantities and conditions of previously identified asbestos-containing building materials, and develop corrective action plans as required. This reassessment is only to be used for the purposes of long-term management and routine maintenance. The results of this reassessment are not to be used for construction, renovation, demolition or project tendering purposes.

1.1 Scope of Assessment

The objective of the reassessment was to evaluate the condition and quantity of previously reported asbestos-containing materials (ACM's), and develop corrective action plans as required.

Refer to the Asbestos Building Materials Reassessment Methodology report and Annex A dated 2022, Pinchin File 303992.004, for the methodology used during the reassessment.

2.0 BACKGROUND INFORMATION

2.1 Building Year of Construction

Item	Details
Year of Construction	1970

2.2 Existing Reports

2.2.1 Review of Previous Reports

Pinchin previously prepared the following reports, which have been reviewed and relied upon as part of this assessment:

- Asbestos Assessment, St. David, 33 Cromwell Crescent, Hamilton, Ontario, September 2018, Prepared by Pinchin Ltd., Pinchin File: 224334.
- Asbestos Reassessment, St. David, 33 Cromwell Crescent, Hamilton, Ontario, August 2019, Prepared by Pinchin Ltd., Pinchin File: 243241.
- Asbestos Reassessment, St. David, 33 Cromwell Crescent, Hamilton, Ontario, June 2020, Prepared by Pinchin Ltd., Pinchin File: 272113.



Asbestos Reassessment

St. David, 33 Cromwell Crescent, Hamilton, Ontario
Hamilton-Wentworth Catholic District School Board

August 23, 2022
Pinchin File: 303992.004

- Asbestos Reassessment, St. David, 33 Cromwell Crescent, Hamilton, Ontario, June 2021, Prepared by Pinchin Ltd., Pinchin File: 286533.001.

3.0 FINDINGS

The following section summarizes the findings of the reassessment and provides a general description of the asbestos materials identified. For details on quantities, assessment, sample numbers, friability, condition, and locations of asbestos materials; refer to the Hazardous Materials Summary / Sample Log Report and All Data Report in Appendix III and IV, respectively.

Previous analytical sample results have been relied upon and were included in the original asbestos assessment report completed by MTE Consultants Inc. Additional sample results were collected by Pinchin have been included in Appendix I.

3.1 Excluded Asbestos Materials


A number of materials which might contain asbestos were not sampled during this reassessment due to limitations in scope and methodology. Where present, these materials are assumed to contain asbestos until otherwise proven by sampling and analysis. These materials are not shown on the drawings in Appendix V. Materials presumed to contain asbestos include:


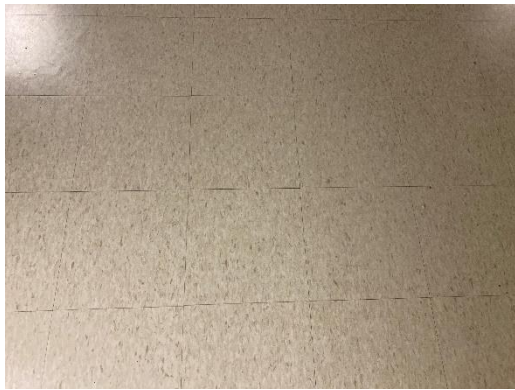
Material	Friability
Roofing, felts and tar	Non-friable
Concrete floor levelling compound	Non-friable
Electrical components or wiring within control centers, breakers, motors or lights, insulation on wiring	Non-friable
Vermiculite in concrete block wall cavities	Friable
Adhesives and duct mastics	Non-friable
Caulking	Non-friable
Fibre reinforced paints and coatings	Non-friable
Paper products	Non-friable
Soffit and fascia boards	Non-friable
Mechanical packing, ropes and gaskets	Non-friable
Exterior cladding	Non-friable

Material	Friability
Fire resistant doors or metal clad finishes	Non-friable
Vibration dampers on HVAC equipment	Non-friable
Ceramic tile thin-set	Non-friable

3.2 Confirmed/Presumed Asbestos-Containing Materials and Confirmed Non-Asbestos Materials

This section includes materials that have been confirmed asbestos-containing by sample analysis or presumed asbestos-containing by visual identification; this section also includes materials that have been confirmed non-asbestos by sample analysis. Refer to the drawings in Appendix V for the locations of confirmed and presumed ACM's indicated via hatching or symbols. The locations of samples from the historical assessments, performed by Pinchin, have been included on the drawings.

Material and Application	Asbestos Type/Friability	Photo
Non-asbestos texture finish is present on drywall walls in the Chapel (Location 1016).	None	
Parging cement is present on pipe fittings (elbows, valves, tees, hangers etc.)	None	
Remaining pipes are either uninsulated or insulated with non-asbestos fibreglass or elastomeric insulation (Armaflex).	None	
Ducts are either uninsulated or insulated with non-asbestos fibreglass.	None	

Material and Application	Asbestos Type/Friability	Photo
Mechanical equipment is either uninsulated or insulated with non-asbestos fibreglass.	None	
All ceiling tiles are presumed to be non-asbestos based on the date of manufacture determined from the date stamp applied to the top of the tiles, the age of the materials determined from the age of the building or the renovation, or by sample analysis.	None	
Plaster present on walls and ceilings does not contain asbestos.	None	
Non-asbestos drywall joint compound is present on wall and ceiling finishes.	None	
Vinyl floor tiles, 12"x12" light green multi-fleck and 12"x12" green multi-fleck, are present	None (tile) None (mastic)	
<p>Remaining vinyl floor tiles were presumed to be non-asbestos based on historical knowledge of the date of installation or by sample analysis.</p> <p>Mastic under non-asbestos vinyl floor tiles is presumed to contain asbestos until sampling proves otherwise.</p>	None (tile) Presumed/Non-friable (mastic)	



Additional notes on the drywall joint compound discussed above:

- Drywall (gypsum board) and drywall joint compound is present as a wall and ceiling finish throughout the building. As per the methodology, drywall joint compound is sampled at exterior walls, columns or other locations that are unlikely to have been renovated in an attempt to determine the presence of asbestos in the original drywall compound. A total of 9 samples of drywall joint compound were collected (samples S0001A-C, S0002A-C, and S0004A-C, lab reference no. 71918923) and it was found that all samples do not contain asbestos. Therefore, drywall joint compound present on drywall finishes should be considered to be non-asbestos.

Additional notes on the vinyl floor tiles and mastic discussed above:

- Mastic was analysed for asbestos content where it was present on the tiles, however a comprehensive testing program for mastic was not performed.

4.0 RECOMMENDATIONS

4.1 General

Perform a detailed intrusive assessment prior to building renovation or demolition operations. The assessment should include; destructive testing (i.e. coring and/or removal of building finishes and components), sampling of other hazardous materials (lead, mercury, PCBs, mould, etc.), and materials not tested in this study (i.e. excluded asbestos materials).

4.2 On-going Management and Maintenance

The following recommendations are made regarding on-going management and maintenance work involving the asbestos materials identified.

4.2.1 Asbestos

Maintain the Asbestos Management Program (AMP).

Remove asbestos-containing materials (ACM) prior to alteration or maintenance work if ACM may be disturbed by the work. Follow appropriate asbestos precautions for the classification of work being performed.

Sample presumed ACM prior to alteration or maintenance work if the presumed ACM may be disturbed by the work.

Update the asbestos inventory report upon completion of any abatement and removal of asbestos-containing materials.



Asbestos Reassessment

St. David, 33 Cromwell Crescent, Hamilton, Ontario
Hamilton-Wentworth Catholic District School Board

August 23, 2022
Pinchin File: 303992.004

5.0 TERMS AND LIMITATIONS

This work was performed subject to the Terms and Limitations presented or referenced in the proposal for this project.

Information provided by Pinchin is intended for Client use only. Pinchin will not provide results or information to any party unless disclosure by Pinchin is required by law. Any use by a third party of reports or documents authored by Pinchin or any reliance by a third party on or decisions made by a third party based on the findings described in said documents, is the sole responsibility of such third parties. Pinchin accepts no responsibility for damages suffered by any third party as a result of decisions made or actions conducted. No other warranties are implied or expressed.

6.0 REFERENCES

The following legislation and documents were referenced in completing the assessment and this report:

1. Asbestos on Construction Projects and in Buildings and Repair Operations, Ontario Regulation 278/05.
2. Designated Substances, Ontario Regulation 490/09.

\\pinchin.com\ham\Job\303000s\0303992.000 HWCDSB, Various2022Projects, ASB, CONS\0303992.004
HWCDSB, AllFacilities, 2022, ASB, REASSMT\Deliverables\Elementary\St. David\Report\303992.004 St. David ACM Reassessment Report HWCDSB August 23 2022.docx

Template: Master Report for Asbestos Reassessment, HAZ, April 23, 2019

APPENDIX I
Asbestos Analytical Certificates



Bulk Asbestos Analysis

By Polarized Light Microscopy
EPA Method: 600/R-93/116 and 40 CFR, Part 763, Subpart E,
App.E



Customer: Pinchin Ltd.
6-875 Main St West
Suite 200
Hamilton, Ontario L8S 4P9

Attn: Emily Balfour
Michael Maiorana

Lab Order ID: 71918923
Analysis ID: 71918923_PLM
Date Received: 7/18/2019
Date Reported: 7/23/2019

Project: 230748,33 Cromwell Crescent, Hamilton, Ontario,Hamilton-Wentworth Catholic School Board,St. David

Sample ID	Description	Asbestos	Fibrous Components	Non-Fibrous Components	Attributes
Lab Sample ID	Lab Notes				Treatment
S0001A	Drywall Joint Compound on Wall, Classroom, Location 2014	None Detected		100% Other	White Non Fibrous Homogeneous
71918923PLM_1					Crushed
S0001B	Drywall Joint Compound on Wall, Classroom, Location 2029	None Detected		100% Other	White Non Fibrous Homogeneous
71918923PLM_2					Crushed
S0001C	Drywall Joint Compound on Wall, Classroom, Location 2011	None Detected		100% Other	White Non Fibrous Homogeneous
71918923PLM_3					Crushed
S0002A	Drywall Joint Compound on Wall, Library, Location 2020	None Detected		100% Other	White Non Fibrous Homogeneous
71918923PLM_4					Crushed
S0002B	Drywall Joint Compound on Wall, Computer Lab, Location 2027	None Detected		100% Other	White Non Fibrous Homogeneous
71918923PLM_5					Crushed
S0002C	Drywall Joint Compound on Wall, Classroom, Location 2026	None Detected		100% Other	White Non Fibrous Homogeneous
71918923PLM_6					Crushed
S0003A	Texture Finish on Wall, Chapel, Location 1016	None Detected		100% Other	White Non Fibrous Homogeneous
71918923PLM_7					Crushed
S0003B	Texture Finish on Wall, Chapel, Location 1016	None Detected		100% Other	White Non Fibrous Homogeneous
71918923PLM_8					Crushed

Disclaimer: Due to the nature of the EPA 600 method, asbestos may not be detected in samples containing low levels of asbestos. We strongly recommend that analysis of floor tiles, vermiculite, and/or heterogeneous soil samples be conducted by TEM for confirmation of "None Detected" by PLM. This report relates only to the samples tested and may not be reproduced, except in full, without the written approval of SAI. This report may not be used by the client to claim product endorsement by NVLAP or any other agency of the U.S. government. Analytical uncertainty available upon request. Scientific Analytical Institute participates in the NVLAP Proficiency Testing program. Unless otherwise noted blank sample correction was not performed. Estimated MDL is 0.1%.

Bart Huber (12)

Analyst

Approved Signatory



Bulk Asbestos Analysis

By Polarized Light Microscopy
EPA Method: 600/R-93/116 and 40 CFR, Part 763, Subpart E,
App.E



Customer: Pinchin Ltd.
6-875 Main St West
Suite 200
Hamilton, Ontario L8S 4P9

Attn: Emily Balfour
Michael Maiorana

Project: 230748,33 Cromwell Crescent, Hamilton, Ontario, Hamilton-Wentworth Catholic School Board, St. David

Lab Order ID: 71918923
Analysis ID: 71918923_PLM
Date Received: 7/18/2019
Date Reported: 7/23/2019

Sample ID	Description	Asbestos	Fibrous Components	Non-Fibrous Components	Attributes
Lab Sample ID	Lab Notes				Treatment
S0003C	Texture Finish on Wall, Chapel, Location 1016	None Detected		100% Other	White Non Fibrous Homogeneous
71918923PLM_9					Crushed
S0004A	Drywall Joint Compound on Wall, Ontario ECE Play Area, Location 1046	None Detected		100% Other	White Non Fibrous Homogeneous
71918923PLM_10					Crushed
S0004B	Drywall Joint Compound on Wall, Ontario ECE Offices, Location 1041	None Detected		100% Other	White Non Fibrous Homogeneous
71918923PLM_11					Crushed
S0004C	Drywall Joint Compound on Wall, Ontario ECE Program, Location 1040	None Detected		100% Other	White Non Fibrous Homogeneous
71918923PLM_12					Crushed


Disclaimer: Due to the nature of the EPA 600 method, asbestos may not be detected in samples containing low levels of asbestos. We strongly recommend that analysis of floor tiles, vermiculite, and/or heterogeneous soil samples be conducted by TEM for confirmation of "None Detected" by PLM. This report relates only to the samples tested and may not be reproduced, except in full, without the written approval of SAL. This report may not be used by the client to claim product endorsement by NVLAP or any other agency of the U.S. government. Analytical uncertainty available upon request. Scientific Analytical Institute participates in the NVLAP Proficiency Testing program. Unless otherwise noted blank sample correction was not performed. Estimated MDL is 0.1%.

Bart Huber (12)

Analyst

Approved Signatory

71918923
Version 1-15-2012

Client:	Pinchin Ltd.	<p>*Instructions: Use Column "B" for your contact info</p> <p>To See an Example Click the bottom Example Tab.</p> <p>Enter samples between "<<" and ">>"</p> <p>Begin Samples with a "<<" above the first sample and end with a ">>" below the last sample. Only Enter your data on the first sheet "Sheet1"</p> <p>Note: Data 1 and Data 2 are optional fields that do not show up on the official report, however they will be included in the electronic data returned to you to facilitate your reintegration of the report data.</p>	Invoice to:
Contact:	Emily Balfour		ap@pinchin.com
Address:	6-875 Main Street West, Suite 200, Hamilton ON L8S 4P9		
Phone:	905-577-6206		
Fax:	905-577-6207		
Email:	ebalfour@pinchin.com mmaiorana@pinchin.com 230748,33 Cromwell Crescent, Hamilton, Ontario,Hamilton- Wentworth Catholic School Board,St. David		
Project:			 <p>Scientific Analytical Institute</p> <p>4604 Dundas Dr. Greensboro, NC 27407 Phone: 336.292.3888 Fax: 336.292.3313 Email: lab@sailab.com</p>
Client Notes:			
P.O. #.	230748		
Date Submitted:	July 17,2019		
Analysis:	PLM - Stop Positive		
TurnAroundTime:	4days		

Sample Number	Data 1 (Lab use only)	Sample Description	Data 2 (Lab use only)
<<			
S0001A		Drywall Joint Compound on Wall, Classroom, Location 2014	
S0001B		Drywall Joint Compound on Wall, Classroom, Location 2029	
S0001C		Drywall Joint Compound on Wall, Classroom, Location 2011	
S0002A		Drywall Joint Compound on Wall, Library, Location 2020	
S0002B		Drywall Joint Compound on Wall, Computer Lab, Location 2027	
S0002C		Drywall Joint Compound on Wall, Classroom, Location 2026	
S0003A		Texture Finish on Wall, Chapel, Location 1016	
S0003B		Texture Finish on Wall, Chapel, Location 1016	
S0003C		Texture Finish on Wall, Chapel, Location 1016	
S0004A		Drywall Joint Compound on Wall, Ontario ECE Play Area, Location 1046	
S0004B		Drywall Joint Compound on Wall, Ontario ECE Offices, Location 1041	
S0004C		Drywall Joint Compound on Wall, Ontario ECE Program, Location 1040	
>>			

Accepted ☒

Rejected ☐

M. IV. K. J. Lee
7-18 10:30



Pinchin Ltd. Asbestos Laboratory *Certificate of Analysis*

Project Name:	Hamilton-Wentworth Catholic School Board, St. David, 33 Cromwell Crescent, Hamilton, Ontario		
Project No.:	0272113.000		
Prepared For:	E. Balfour / M. Maiorana		
Lab Reference No.:	b230669	Date Received:	May 21, 2020
Analyst(s):	K. Cockburn	Date Analyzed:	May 28, 2020
		# Samples submitted:	3
		# Phases analyzed:	3

Method of Analysis:

EPA 600/R-93/116 - Method for the Determination of Asbestos in Bulk Building Materials dated July, 1993

Bulk samples are checked visually and scanned under a stereomicroscope. Slides are prepared and observed under a Polarized Light Microscope (PLM) at magnifications of 40X, 100X or 400X as appropriate. Asbestos fibres are identified by a combination of morphology, colour, refractive index, extinction, sign of elongation, birefringence and dispersion staining colours. A visual estimate is made of the percentage of asbestos present. A reported concentration of less than (<) the regulatory threshold (see chart below) indicates the presence of confirmed asbestos in trace quantities, limited to only a few fibres or fibre bundles in an entire sample. This method complies with provincial regulatory requirements where applicable. Multiple phases within a sample are analyzed and reported separately.

All bulk samples submitted to this laboratory for asbestos analysis are retained for a minimum of three months. Samples may be retrieved, upon request, for re-examination at any time during that period.

The Pinchin Ltd. Mississauga asbestos laboratory is accredited by the National Institute of Standards and Technology, National Voluntary Laboratory Accreditation Program (NVLAP Lab Code 101270-0) for the 'EPA – 40 CFR Appendix E to Subpart E of Part 763, Interim Method of the Determination of Asbestos in Bulk Insulation Samples,' and the 'EPA 600/R-93/116: Method for the Determination of Asbestos in Bulk Building Materials'; and meets all requirements of ISO/IEC 17025:2005.

This report relates only to the items tested.

NOTE: *This test report may not be reproduced, except in full, without the written approval of the laboratory. The client may not use this report to claim product endorsement by NVLAP or any agency of the U.S. Government. This report is valid only when signed in blue ink by the analyst. Vinyl asbestos floor tiles contain very fine fibres of asbestos and may be missed by some laboratories using the PLM method. Internal verification studies performed by Pinchin indicate that the chance of missing asbestos in floor tiles is no higher than about 2%. The vinyl tile study and laboratory documentation on measurement uncertainty is available upon request. The analysis of dust samples by PLM cannot be used as an indicator of past or present airborne asbestos fibre levels.*



Pinchin Ltd. Asbestos Laboratory
Certificate of Analysis

Project Name: Hamilton-Wentworth Catholic School Board, St. David,
33 Cromwell Crescent, Hamilton, Ontario
Project No.: 0272113.000
Prepared For: E. Balfour / M. Maiorana
Lab Reference No.: b230669
Date Analyzed: May 28, 2020

BULK SAMPLE ANALYSIS

SAMPLE IDENTIFICATION	SAMPLE DESCRIPTION	% COMPOSITION (VISUAL ESTIMATE)	
		ASBESTOS	OTHER
S0005A Parging cement, Storage, Location 2	Homogeneous, grey, soft, parging cement.	None Detected	Cellulose 0.5-5% Man-made Vitreous 25-50% Fibres Non-Fibrous Material 50-75%
S0005B Parging cement, Storage, Location 2	Homogeneous, grey, soft, parging cement.	None Detected	Cellulose 0.5-5% Man-made Vitreous 25-50% Fibres Non-Fibrous Material 50-75%
S0005C Parging cement, Storage, Location 3	Homogeneous, grey, soft, parging cement.	None Detected	Cellulose 0.5-5% Man-made Vitreous 25-50% Fibres Non-Fibrous Material 50-75%

Reviewed by:

Reporting Analyst:



ANALYZED BY: *KG*
REVIEWED BY: *HB*
REPORT SENT BY: *19*

MEMBER OF
PG
THE PINCHIN GROUP

Instructions:

Pinchin Ltd. - Asbestos Laboratory Internal Asbestos Bulk Sample Chain of Custody

Client Name:	Hamilton-Wentworth Catholic School Board	Project Address:	33 Cromwell Crescent, Hamilton, Ontario
Portfolio/Building No:	St. David	Pinchin File:	272113
Submitted by:	Emily Balfour	Email:	ebalfour@pinchin.com
CC Results to:	Michael Maiorana	CC Email:	mmaiorana@pinchin.com
Invoice to:	Accounts Payable	Invoice Email:	ap@pinchin.com
Date Submitted:	May 19 2020	Required by:	May 26 2020
# of Samples:	3	Priority:	5 Day Turnaround
Year of Building Construction (Mandatory Field):	1971		
Do NOT Stop on Positive (Sample Numbers):			
Pinchin Group Company (Mandatory Field):	Pinchin		

To be Completed by Lab Personnel Only:			
Lab Reference #:	5230669 CA	Time:	24 hour clock
Received by:	MAY 21 2020	Date:	Month Day Year
Name(s) of Analyst(s):	<i>KG</i> 2020/05/28		
Sample Prefix	Sample No.	Sample Suffix	Sample Description/Location (Mandatory)
	S0005	A	Parging cement, Storage, Location 2 ND
	S0005	B	Parging cement, Storage, Location 2 ND
	S0005	C	Parging cement, Storage, Location 3 ND

APPENDIX II
Location List

Client: Hamilton-Wentworth Catholic District Sch
Building Name: St. David
Survey Date: 2018-08-02

Site: 33 Cromwell Cresnet, Hamilton, ON
Last Re-Assessment: 2022-05-10

Location No.	Name or Description	Area ft ²	Floor No.	Bldg. Phase	Notes
0	Exterior / General	0	G	A	
1	Storage, room no. B110	0	B	A	
2	Storage, room no. B109	0	B	A	
3	Storage, room no. B108	0	B	A	
4	Storage, room no. B107	0	B	A	
5	Stairwell, room no. B005	0	B	A	
6	Stairwell, room no. B006	0	B	A	
7	Electrical, room no. B007	0	B	A	
8	Sprinkler Room, room no. B008	0	B	A	
9	Alarm Control Room, room no. B009	0	B	A	
10	Sink Room, room no. B010	0	B	A	
11	Classroom B105, room no. B105	0	B	A	
12	Classroom B106, room no. B106	0	B	A	
13	Corridor, room no. B013	0	B	A	
1001	Kindergarten	0	1	A	
1002	Cafeteria Foyer	0	1	A	
1003	Stairwell	0	1	A	
1004	Sick Room	0	1	A	
1005	Office	0	1	A	
1006	Principal	0	1	A	
1007	Staff Room	0	1	A	
1008	Vice Principal	0	1	A	
1009	Copy Room	0	1	A	
1010	Washroom	0	1	A	
1011	Womens Washroom	0	1	A	
1012	Corridor	0	1	A	
1013	Storage	0	1	A	
1014	Classroom, room no. 117	0	1	A	
1015	Classroom, room no. 118	0	1	A	
1016	Chapel	0	1	A	
1017	Corridor	0	1	A	
1019	Classroom, room no. 123	0	1	A	
1020	Classroom, room no. 122	0	1	A	
1021	Cafeteria	0	1	A	
1022	Custodian	0	1	A	
1023	School Council	0	1	A	
1024	Girls Washroom	0	1	A	
1025	Boys Washroom	0	1	A	
1026	Storage	0	1	A	
1027	Stage Storage	0	1	A	
1028	Stage Storage	0	1	A	
1029	Stage Storage	0	1	A	
1030	Stage Storage	0	1	A	
1031	Storage	0	1	A	
1032	Storage (Former Shower)	0	1	A	
1033	Storage	0	1	A	
1034	Storage	0	1	A	
1035	French Office	0	1	A	
1036	Mens Washroom	0	1	A	
1037	Gym Storage	0	1	A	
1038	Storage	0	1	A	
1039	Corridor	0	1	A	
1040	Ontario ECE Program	0	1	A	
1041	Ontario ECE Offices	0	1	A	
1042	Ontario ECE Daycare Washroom	0	1	A	
1043	Ontario ECE Centre	0	1	A	
1044	Ontario ECE Quiet Room	0	1	A	
1045	Ontario ECE Storage	0	1	A	
1046	Ontario ECE Play Area	0	1	A	

Location No.	Name or Description	Area ft ²	Floor No.	Bldg. Phase	Notes
1047	Abandoned Stairwell	0	1	A	
1048	Storage	0	1	A	
1049	Former Shower Room	0	1	A	
2001	Electrical Room	0	2	A	
2002	Staff Washroom	0	2	A	
2003	Staff Washroom	0	2	A	
2004	Corridor	0	2	A	
2005	Classroom, room no. 213	0	2	A	
2006	Classroom, room no. 218	0	2	A	
2007	Classroom, room no. 211	0	2	A	
2008	Book Room	0	2	A	
2009	Hot Water Room	0	2	A	
2010	Classroom, room no. 208	0	2	A	
2011	Classroom, room no. 207	0	2	A	
2012	Classroom, room no. 206	0	2	A	
2013	Classroom, room no. 205	0	2	A	
2014	Classroom, room no. 204	0	2	A	
2015	LRT Room	0	2	A	
2016	Server Room	0	2	A	
2017	Classroom, room no. 201	0	2	A	
2018	Corridor	0	2	A	
2019	Corridor	0	2	A	
2020	Library	0	2	A	
2021	Office	0	2	A	
2022	Reading Recovery	0	2	A	
2023	Girls Washroom	0	2	A	
2024	Boys Washroom	0	2	A	
2025	Classroom, room no. 224	0	2	A	
2026	Classroom, room no. 223	0	2	A	
2027	Computer Lab	0	2	A	
2028	Classroom, room no. 220	0	2	A	
2029	Classroom, room no. 219	0	2	A	
2030	Classroom, room no. 218	0	2	A	
2031	Classroom, room no. 217	0	2	A	

APPENDIX III

Hazardous Materials Summary / Sample Log Report

HAZARDOUS MATERIALS SUMMARY / SAMPLE LOG

Client: Hamilton-Wentworth Catholic District Sch

Site: 33 Cromwell Cresnet, Hamilton, ON

Building Name: St. David

Survey Date: 2018-08-02

HAZMAT	Sample No	System/Component/Material/Sample Description	Locations	Bldg. Phase	LF	SF	EA	%	Type	Positive	Friability
Asbestos	S0001 ABC	Wall Drywall And Joint Compound	2010,2011,2012,2013,2014,2028,2029,2030,2031	A	0	0	0	100	None Detected	No	
Asbestos	S0002 ABC	Wall Drywall And Joint Compound	2018,2019,2020,2021,2022,2025,2026,2027	A	0	0	0	100	None Detected	No	
Asbestos	S0003 ABC	Wall Texture Coat	1016	A	0	0	0	100	None Detected	No	
Asbestos	S0004 ABC	Wall, Ceiling, Wall Drywall And Joint Compound	1039,1040,1041,1042,1043,1044,1045,1046	A	0	0	0	100	None Detected	No	
Asbestos	S0005 ABC	Piping Parging Cement	2,3,13,1037,2009	A	0	0	25	0	None Detected	No	
Asbestos	V9500	Floor Mastix	0,9,1004,1005,1007,1019,1020,1040,1044,2004 2006,2012,2013,2014,2015,2016,2017,2018,2019 2021,2022,2026,2027,2028	A	0	0	0	100	Presumed Asbestos	Yes	NF
Asbestos	V9500	Mechanical Equipment Switch Gear Cement Product	0	A	0	0	0	100	Presumed Asbestos	Yes	NF
Asbestos	V9500	Mechanical Equipment Electrical Wire Fibreglass W/asb. Tex Jacketing	0	A	0	0	0	100	Presumed Asbestos	Yes	NF
Asbestos	V9500	Other Door, Window Liner Caulking	0	A	0	0	0	100	Presumed Asbestos	Yes	NF
Asbestos	V9500	Structure Roof Roofing Material	0	A	0	0	0	100	Presumed Asbestos	Yes	NF
Asbestos	V9500	Wall Vermiculite/concrete Block Walls	0	A	0	0	0	100	Presumed Asbestos	Yes	F
Asbestos	V0000	Ceiling Acoustic Tile Ceiling Tiles (lay-in) Short Fissure And Random Pinhole	1043,2007,2008,2021,2028,2029	A	0	0	0	100	Non Asbestos	No	
Asbestos	V0000	Ceiling Acoustic Tile Ceiling Tiles (lay-in) Short Fissure And Random Pinhole	6,1001,1002,1003,1004,1012,1013,1014,1015,1016 1020,1021,1022,1039,1040,1041,1044,1045,2001 2004,2005,2006,2009,2011,2012,2013,2014,2015 2016,2017,2019,2020,2022,2025,2026,2027,2030 2031	A	0	0	0	100	Non Asbestos	No	
Asbestos	V0000	Ceiling Acoustic Tile Ceiling Tiles (lay-in) Short Fissure With Ransom Pinhole	1046	A	0	0	0	100	Non Asbestos	No	
Asbestos	V0000	Ceiling Acoustic Tile Ceiling Tiles (lay-in) Small Irregular Pinhole	2025	A	0	0	0	100	Non Asbestos	No	
Asbestos	V0000	Ceiling Acoustic Tile Ceiling Tiles (lay-in) Small And Irregular Pinhole	1005,1006,1007,1008,1009,1019,1035,2010,2011 2013,2014,2026	A	0	0	0	100	Non Asbestos	No	
Asbestos	V0000	Ceiling Plaster	5,6,1003,1010,1011,1017,1023,1024,1025,1031 1032,1033,1034,1036,1038,1047,1048,1049,2002 2003,2023,2024	A	0	0	0	100	Non Asbestos	No	
Asbestos	V0000	Floor Rubber Vinyl Plank (wood Look)	1040	A	0	0	0	0	Non Asbestos	No	
Asbestos	V0000	Floor Rubber Vinyl Plank (wood Look)	1044	A	0	0	0	0	Non	No	

HAZMAT	Sample No	System/Component/Material/Sample Description	Locations	Bldg. Phase	LF	SF	EA	%	Type	Positive	Friability
									Asbestos		
Asbestos	V0000	Floor Vinyl Floor Tile Beige Multi-fleck	9,1004,1005,1007,1019,1020,2004,2006,2012,2013 2014,2016,2017,2018,2019,2021,2022,2026,2027 2028	A	0	0	0	100	Non Asbestos	No	
Asbestos	V0000	Floor Vinyl Floor Tile Beige And Multi-fleck	2015	A	0	0	0	100	Non Asbestos	No	
Asbestos	V0000	Floor Vinyl Floor Tile And Mastic 12x12 Light Green Multi-fleck	6	A	0	0	0	100	Non Asbestos	No	
Asbestos	V0000	Floor Vinyl Floor Tile And Mastic Green Multi-fleck	11,12,1001,1009,1012,1013,1014,1015,1021,1022 1026,1027,1028,1029,1030,1031,1033,1034,1035 1038,1039,1041,1042,1043,1045,1046,1047,1048	A	0	0	0	100	Non Asbestos	No	
Asbestos	V0000	Floor Vinyl Floor Tile And Mastic Light Green Multi-fleck	11,12,1001,1012,1013,1014,1015,1021,1022,1026 1027,1028,1029,1030,1033,1034,1035,1038,1041 1042,1043,1045,1046,1047,1048,2004,2005,2006 2007,2008,2010,2011,2012,2015,2016,2025,2028 2029,2030,2031	A	0	0	0	100	Non Asbestos	No	
Asbestos	V0000	Floor Vinyl Floor Tile And Mastic Light Green And Multi-fleck	1009,1031,1039	A	0	0	0	100	Non Asbestos	No	
Asbestos	V0000	Wall Plaster	1006,1012,1013,1014,1015,1021,1022,1023	A	0	0	0	100	Non Asbestos	No	

Legend:

Sample number		Units			
S####	Asbestos sample collected	SF	Square feet	NF	Non Friable material.
L####	Paint sample collected	LF	Linear feet	F	Friable material
P####	PCB sample collected	EA	Each	PF	Potentially Friable material
M####	Mould sample collected	%	Percentage		
V####	Material visually similar to numbered sample collected				
V0000	Known non Hazardous Material				
V9000	Material is visually identified as Hazardous Material				
V9500	Material is presumed to be Hazardous Material				
[Loc. No.]	Abated Material				

APPENDIX IV
All Data Report

ALL DATA REPORT

Client: Hamilton-Wentworth Catholic District Sch
Location: #0 : Exterior / General
Survey Date: 2018-08-02

Site: Elementary
Floor: G

Building Name: St. David
Room #:
Last Re-Assessment: 2022-05-10

Area (sqft): 0

ASBESTOS																
System	Component	Material	Item	Covering	A*	V*	AP*	Good	Fair	Poor	Unit	Sample	Asbestos Type	Amount	Hazard	Friable
Floor ¹		Mastic		Vinyl Floor Tile	A	N		100(7)			%	V9500	Presumed Asbestos		Presumed Asbestos	NF
Mechanical Equipment ²	Electrical Wire	Fibreglass w/Asb. Tex Jacketing			C	Y		100(7)			%	V9500	Presumed Asbestos		Presumed Asbestos	NF
Mechanical Equipment	Switch Gear	Cement Product			C	Y		100(7)			%	V9500	Presumed Asbestos		Presumed Asbestos	NF
Other	Door	Caulking	Perimeter		A	Y		100(7)			%	V9500	Presumed Asbestos		Presumed Asbestos	NF
Other	Window Liner	Caulking	Perimeter		A	Y		100(7)			%	V9500	Presumed Asbestos		Presumed Asbestos	NF
Structure	Roof	Roofing material			C	Y		100(7)			%	V9500	Presumed Asbestos		Presumed Asbestos	NF
Wall ³		Masonry			A	Y										
Wall		Vermiculite/concrete block walls			A	Y		100(5)			%	V9500	Presumed Asbestos		Presumed Asbestos	F

1 - Mastic is Presumed until sampling proves otherwise.

2 - Older Wiring

3 - Exterior Cladding Brick

ALL DATA REPORT

Client: Hamilton-Wentworth Catholic District Sch
Location: #1 : Storage
Survey Date: 2018-08-02

Site: Elementary
Floor: B

Building Name: St. David
Room #: B110
Last Re-Assessment: 2022-05-10

Area (sqft): 0

ASBESTOS																
System	Component	Material	Item	Covering	A*	V*	AP*	Good	Fair	Poor	Unit	Sample	Asbestos Type	Amount	Hazard	Friable
Floor		Concrete (poured)			A	Y										
Piping ¹		Fibreglass			C	Y										
Structure	Deck	Concrete (poured)			C	Y										
Wall ²		Masonry			A	Y										

- 1 - Above Ceiling
- 2 - Concrete Block

Client: Hamilton-Wentworth Catholic District Sch
Location: #2 : Storage
Survey Date: 2018-08-02

Site: Elementary
Floor: B

Building Name: St. David
Room #: B109
Last Re-Assessment: 2022-05-10

Area (sqft): 0

ASBESTOS																
System	Component	Material	Item	Covering	A*	V*	AP*	Good	Fair	Poor	Unit	Sample	Asbestos Type	Amount	Hazard	Friable
Floor		Concrete (poured)			A	Y										
Piping ¹		Fibreglass			C	Y										
Piping ²		Parging Cement	Fitting		C	Y		2			EA	S0005AB	None Detected	N.D.	None	
Structure	Deck	Concrete (poured)			C	Y										
Wall ³		Masonry			A	Y										

- 1 - Above Ceiling
- 2 - Ceiling Level
- 3 - Concrete Block

ALL DATA REPORT

Client: Hamilton-Wentworth Catholic District Sch
Location: #3 : Storage
Survey Date: 2018-08-02

Site: Elementary
Floor: B

Building Name: St. David
Room #: B108
Last Re-Assessment: 2022-05-10

Area (sqft): 0

ASBESTOS																
System	Component	Material	Item	Covering	A*	V*	AP*	Good	Fair	Poor	Unit	Sample	Asbestos Type	Amount	Hazard	Friable
Floor		Concrete (poured)			A	Y										
Piping ¹		Fibreglass			C	Y										
Piping ²		Parging Cement	Fitting		C	Y		2			EA	S0005C	None Detected	N.D.	None	
Structure	Deck	Concrete (poured)			C	Y										
Wall ³		Masonry			A	Y										

- 1 - Above Ceiling
- 2 - Ceiling Level
- 3 - Concrete Block

Client: Hamilton-Wentworth Catholic District Sch
Location: #4 : Storage
Survey Date: 2018-08-02

Site: Elementary
Floor: B

Building Name: St. David
Room #: B107
Last Re-Assessment: 2022-05-10

Area (sqft): 0

ASBESTOS																
System	Component	Material	Item	Covering	A*	V*	AP*	Good	Fair	Poor	Unit	Sample	Asbestos Type	Amount	Hazard	Friable
Floor		Concrete (poured)			A	Y										
Structure	Deck	Concrete (poured)			C	Y										
Wall ¹		Masonry			A	Y										

- 1 - Concrete Block

ALL DATA REPORT

Client: Hamilton-Wentworth Catholic District Sch
Location: #5 : Stairwell
Survey Date: 2018-08-02

Site: Elementary
Floor: B

Building Name: St. David
Room #: B005
Last Re-Assessment: 2022-05-10

Area (sqft): 0

ASBESTOS																
System	Component	Material	Item	Covering	A*	V*	AP*	Good	Fair	Poor	Unit	Sample	Asbestos Type	Amount	Hazard	Friable
Ceiling		Plaster			C	Y		100			%	V0000	Non-Asbestos		None	
Floor		Ceramic Tiles			A	Y										
Wall ¹		Masonry			A	Y										

1 - Concrete Block

Client: Hamilton-Wentworth Catholic District Sch
Location: #6 : Stairwell
Survey Date: 2018-08-02

Site: Elementary
Floor: B

Building Name: St. David
Room #: B006
Last Re-Assessment: 2022-05-10

Area (sqft): 0

ASBESTOS																
System	Component	Material	Item	Covering	A*	V*	AP*	Good	Fair	Poor	Unit	Sample	Asbestos Type	Amount	Hazard	Friable
Ceiling		Plaster			C	Y		100			%	V0000	Non-Asbestos		None	
Ceiling	Acoustic Tile	Ceiling Tiles (lay-in), Short Fissure and Random Pinhole			C	Y		100			%	V0000	Non-Asbestos		None	
Floor		Vinyl Floor Tile and Mastic, 12x12 light green multi-fleck			A	Y		100			%	V0000	Non-Asbestos		None	
Floor		Ceramic Tiles			A	Y										
Wall ¹		Masonry			A	Y										

1 - Concrete Block

ALL DATA REPORT

Client: Hamilton-Wentworth Catholic District Sch
Location: #7 : Electrical
Survey Date: 2018-08-02

Site: Elementary
Floor: B

Building Name: St. David
Room #: B007
Last Re-Assessment: 2022-05-10

Area (sqft): 0

ASBESTOS																
System	Component	Material	Item	Covering	A*	V*	AP*	Good	Fair	Poor	Unit	Sample	Asbestos Type	Amount	Hazard	Friable
Floor		Concrete (poured)			A	Y										
Structure	Deck	Concrete (poured)			C	Y										
Wall ¹		Masonry			A	Y										

1 - Concrete Block

Client: Hamilton-Wentworth Catholic District Sch
Location: #8 : Sprinkler Room
Survey Date: 2018-08-02

Site: Elementary
Floor: B

Building Name: St. David
Room #: B008
Last Re-Assessment: 2022-05-10

Area (sqft): 0

ASBESTOS																
System	Component	Material	Item	Covering	A*	V*	AP*	Good	Fair	Poor	Unit	Sample	Asbestos Type	Amount	Hazard	Friable
Floor		Concrete (poured)			A	Y										
Structure	Deck	Concrete (poured)			C	Y										
Wall ¹		Masonry			A	Y										

1 - Concrete Block

ALL DATA REPORT

Client: Hamilton-Wentworth Catholic District Sch
Location: #9 : Alarm Control Room
Survey Date: 2018-08-02

Site: Elementary
Floor: B

Building Name: St. David
Room #: B009
Last Re-Assessment: 2022-05-10

Area (sqft): 0

ASBESTOS																
System	Component	Material	Item	Covering	A*	V*	AP*	Good	Fair	Poor	Unit	Sample	Asbestos Type	Amount	Hazard	Friable
Floor		Mastic		Vinyl Floor Tile	D	N		100(7)			%	V9500	Presumed Asbestos		Presumed Asbestos	NF
Floor		Vinyl Floor Tile, Beige Multi-Fleck			A	Y		100			%	V0000	Non-Asbestos		None	
Structure	Deck	Concrete (poured)			C	Y										
Wall ¹		Masonry			A	Y										

1 - Concrete Block

Client: Hamilton-Wentworth Catholic District Sch
Location: #10 : Sink Room
Survey Date: 2018-08-02

Site: Elementary
Floor: B

Building Name: St. David
Room #: B010
Last Re-Assessment: 2022-05-10

Area (sqft): 0

ASBESTOS																
System	Component	Material	Item	Covering	A*	V*	AP*	Good	Fair	Poor	Unit	Sample	Asbestos Type	Amount	Hazard	Friable
Floor		Concrete (poured)			A	Y										
Piping ¹		Fibreglass			C	Y										
Structure	Deck	Concrete (poured)			C	Y										
Wall ²		Masonry			A	Y										

1 - Above Ceiling
2 - Concrete Block

ALL DATA REPORT

Client: Hamilton-Wentworth Catholic District Sch
Location: #11 : Classroom B105
Survey Date: 2018-08-02

Site: Elementary
Floor: B

Building Name: St. David
Room #: B105
Last Re-Assessment: 2022-05-10

Area (sqft): 0

ASBESTOS																
System	Component	Material	Item	Covering	A*	V*	AP*	Good	Fair	Poor	Unit	Sample	Asbestos Type	Amount	Hazard	Friable
Floor		Vinyl Floor Tile and Mastic, Light Green Multi-Fleck			A	Y		100			%	V0000	Non-Asbestos		None	
Floor		Vinyl Floor Tile and Mastic, Green Multi-Fleck			A	Y		100			%	V0000	Non-Asbestos		None	
Structure	Deck	Concrete (poured)			C	Y										
Wall ¹		Masonry			A	Y										

1 - Concrete Block

Client: Hamilton-Wentworth Catholic District Sch
Location: #12 : Classroom B106
Survey Date: 2018-08-02

Site: Elementary
Floor: B

Building Name: St. David
Room #: B106
Last Re-Assessment: 2022-05-10

Area (sqft): 0

ASBESTOS																
System	Component	Material	Item	Covering	A*	V*	AP*	Good	Fair	Poor	Unit	Sample	Asbestos Type	Amount	Hazard	Friable
Floor		Vinyl Floor Tile and Mastic, Light Green Multi-Fleck			A	Y		100			%	V0000	Non-Asbestos		None	
Floor		Vinyl Floor Tile and Mastic, Green Multi-Fleck			A	Y		100			%	V0000	Non-Asbestos		None	
Structure	Deck	Concrete (poured)			C	Y										
Wall ¹		Masonry			A	Y										

1 - Concrete Block

ALL DATA REPORT

Client: Hamilton-Wentworth Catholic District Sch
Location: #13 : Corridor
Survey Date: 2018-08-02

Site: Elementary
Floor: B

Building Name: St. David
Room #: B013
Last Re-Assessment: 2022-05-10

Area (sqft): 0

ASBESTOS																
System	Component	Material	Item	Covering	A*	V*	AP*	Good	Fair	Poor	Unit	Sample	Asbestos Type	Amount	Hazard	Friable
Floor		Ceramic Tiles			A	Y										
Piping ¹		Fibreglass			C	Y										
Piping ²		Parging Cement			C	Y		14			EA	V0005	None Detected	N.D.	None	
Structure	Deck	Concrete (poured)			C	Y										
Wall ³		Masonry			A	Y										

- 1 - Above Ceiling
- 2 - Ceiling Level
- 3 - Concrete Block

Client: Hamilton-Wentworth Catholic District Sch
Location: #1001 : Kindergarten
Survey Date: 2018-08-02

Site: Elementary
Floor: 1

Building Name: St. David
Room #:
Last Re-Assessment: 2022-05-10

Area (sqft): 0

ASBESTOS																
System	Component	Material	Item	Covering	A*	V*	AP*	Good	Fair	Poor	Unit	Sample	Asbestos Type	Amount	Hazard	Friable
Ceiling	Acoustic Tile	Ceiling Tiles (lay-in), Short Fissure and Random Pinhole			C	Y		100			%	V0000	Non-Asbestos		None	
Floor		Vinyl Floor Tile and Mastic, Light Green Multi-Fleck			A	Y		100			%	V0000	Non-Asbestos		None	
Floor		Vinyl Floor Tile and Mastic, Green Multi-Fleck			A	Y		100			%	V0000	Non-Asbestos		None	
Piping ¹		Fibreglass			C	Y										
Wall ²		Masonry			A	Y										

- 1 - Above Ceiling
- 2 - Concrete Block

ALL DATA REPORT

Client: Hamilton-Wentworth Catholic District Sch
Location: #1002 : Cafeteria Foyer
Survey Date: 2018-08-02

Site: Elementary
Floor: 1

Building Name: St. David
Room #:
Last Re-Assessment: 2022-05-10

Area (sqft): 0

ASBESTOS																
System	Component	Material	Item	Covering	A*	V*	AP*	Good	Fair	Poor	Unit	Sample	Asbestos Type	Amount	Hazard	Friable
Ceiling	Acoustic Tile	Ceiling Tiles (lay-in), Short Fissure and Random Pinhole			C	Y		100			%	V0000	Non-Asbestos		None	
Floor		Ceramic Tiles			A	Y										
Piping ¹		Fibreglass			C	Y										
Wall ²		Masonry			A	Y										

- 1 - Above Ceiling
- 2 - Concrete Block

Client: Hamilton-Wentworth Catholic District Sch
Location: #1003 : Stairwell
Survey Date: 2018-08-02

Site: Elementary
Floor: 1

Building Name: St. David
Room #:
Last Re-Assessment: 2022-05-10

Area (sqft): 0

ASBESTOS																
System	Component	Material	Item	Covering	A*	V*	AP*	Good	Fair	Poor	Unit	Sample	Asbestos Type	Amount	Hazard	Friable
Ceiling ¹		Plaster			C	Y		100			%	V0000	Non-Asbestos		None	
Ceiling	Acoustic Tile	Ceiling Tiles (lay-in), Short Fissure and Random Pinhole			C	Y		100			%	V0000	Non-Asbestos		None	
Floor		Ceramic Tiles			A	Y										
Piping ²		Fibreglass			C	Y										
Wall ³		Masonry			A	Y										

- 1 - Hard Textured Plaster
- 2 - Above Ceiling
- 3 - Concrete Block

ALL DATA REPORT

Client: Hamilton-Wentworth Catholic District Sch
Location: #1004 : Sick Room
Survey Date: 2018-08-02

Site: Elementary
Floor: 1

Building Name: St. David
Room #:
Last Re-Assessment: 2022-05-10

Area (sqft): 0

ASBESTOS																
System	Component	Material	Item	Covering	A*	V*	AP*	Good	Fair	Poor	Unit	Sample	Asbestos Type	Amount	Hazard	Friable
Ceiling	Acoustic Tile	Ceiling Tiles (lay-in), Short Fissure and Random Pinhole			C	Y		100			%	V0000	Non-Asbestos		None	
Floor		Mastic		Vinyl Floor Tile	D	N		100(7)			%	V9500	Presumed Asbestos		Presumed Asbestos	NF
Floor		Vinyl Floor Tile, Beige Multi-Fleck			A	Y		100			%	V0000	Non-Asbestos		None	
Piping ¹		Fibreglass			C	Y										
Wall ²		Masonry			A	Y										

1 - Above Ceiling
2 - Concrete Block

Client: Hamilton-Wentworth Catholic District Sch
Location: #1005 : Office
Survey Date: 2018-08-02

Site: Elementary
Floor: 1

Building Name: St. David
Room #:
Last Re-Assessment: 2022-05-10

Area (sqft): 0

ASBESTOS																
System	Component	Material	Item	Covering	A*	V*	AP*	Good	Fair	Poor	Unit	Sample	Asbestos Type	Amount	Hazard	Friable
Ceiling	Acoustic Tile	Ceiling Tiles (lay-in), Small and Irregular Pinhole			C	Y		100			%	V0000	Non-Asbestos		None	
Floor		Carpet			A	Y										
Floor		Mastic		Vinyl Floor Tile	D	N		100(7)			%	V9500	Presumed Asbestos		Presumed Asbestos	NF
Floor		Vinyl Floor Tile, Beige Multi-Fleck			A	Y		100			%	V0000	Non-Asbestos		None	
Wall ¹		Masonry			A	Y										

1 - Concrete Block

ALL DATA REPORT

Client: Hamilton-Wentworth Catholic District Sch
Location: #1006 : Principal
Survey Date: 2018-08-02

Site: Elementary
Floor: 1

Building Name: St. David
Room #:
Last Re-Assessment: 2022-05-10

Area (sqft): 0

ASBESTOS																
System	Component	Material	Item	Covering	A*	V*	AP*	Good	Fair	Poor	Unit	Sample	Asbestos Type	Amount	Hazard	Friable
Ceiling	Acoustic Tile	Ceiling Tiles (lay-in), Small and Irregular Pinhole			C	Y		100			%	V0000	Non-Asbestos		None	
Floor		Carpet			A	Y										
Wall		Plaster			A	Y		100			%	V0000	Non-Asbestos		None	
Wall ¹		Masonry			A	Y										

1 - Concrete Block

Client: Hamilton-Wentworth Catholic District Sch
Location: #1007 : Staff Room
Survey Date: 2018-08-02

Site: Elementary
Floor: 1

Building Name: St. David
Room #:
Last Re-Assessment: 2022-05-10

Area (sqft): 0

ASBESTOS																
System	Component	Material	Item	Covering	A*	V*	AP*	Good	Fair	Poor	Unit	Sample	Asbestos Type	Amount	Hazard	Friable
Ceiling	Acoustic Tile	Ceiling Tiles (lay-in), Small and Irregular Pinhole			C	Y		100			%	V0000	Non-Asbestos		None	
Floor		Mastic		Vinyl Floor Tile	D	N		100(7)			%	V9500	Presumed Asbestos		Presumed Asbestos	NF
Floor		Vinyl Floor Tile, Beige Multi-Fleck			A	Y		100			%	V0000	Non-Asbestos		None	
Wall ¹		Masonry			A	Y										

1 - Concrete Block

ALL DATA REPORT

Client: Hamilton-Wentworth Catholic District Sch
Location: #1008 : Vice Principal
Survey Date: 2018-08-02

Site: Elementary
Floor: 1

Building Name: St. David
Room #:
Last Re-Assessment: 2022-05-10

Area (sqft): 0

ASBESTOS																
System	Component	Material	Item	Covering	A*	V*	AP*	Good	Fair	Poor	Unit	Sample	Asbestos Type	Amount	Hazard	Friable
Ceiling	Acoustic Tile	Ceiling Tiles (lay-in), Small and Irregular Pinhole			C	Y		100			%	V0000	Non-Asbestos		None	
Floor		Carpet			A	Y										
Wall ¹		Masonry			A	Y										

1 - Concrete Block

Client: Hamilton-Wentworth Catholic District Sch
Location: #1009 : Copy Room
Survey Date: 2018-08-02

Site: Elementary
Floor: 1

Building Name: St. David
Room #:
Last Re-Assessment: 2022-05-10

Area (sqft): 0

ASBESTOS																
System	Component	Material	Item	Covering	A*	V*	AP*	Good	Fair	Poor	Unit	Sample	Asbestos Type	Amount	Hazard	Friable
Ceiling	Acoustic Tile	Ceiling Tiles (lay-in), Small and Irregular Pinhole			C	Y		100			%	V0000	Non-Asbestos		None	
Floor		Vinyl Floor Tile and Mastic, Light Green and Multi-Fleck			A	Y		100			%	V0000	Non-Asbestos		None	
Floor		Vinyl Floor Tile and Mastic, Green Multi-Fleck			A	Y		100			%	V0000	Non-Asbestos		None	
Wall ¹		Masonry			A	Y										

1 - Concrete Block

ALL DATA REPORT

Client: Hamilton-Wentworth Catholic District Sch
Location: #1010 : Washroom
Survey Date: 2018-08-02

Site: Elementary
Floor: 1

Building Name: St. David
Room #:
Last Re-Assessment: 2022-05-10

Area (sqft): 0

ASBESTOS																
System	Component	Material	Item	Covering	A*	V*	AP*	Good	Fair	Poor	Unit	Sample	Asbestos Type	Amount	Hazard	Friable
Ceiling		Plaster			C	Y		100			%	V0000	Non-Asbestos		None	
Floor		Ceramic Tiles			A	Y										
Wall ¹		Masonry			A	Y										

1 - Concrete Block

Client: Hamilton-Wentworth Catholic District Sch
Location: #1011 : Womens Washroom
Survey Date: 2018-08-02

Site: Elementary
Floor: 1

Building Name: St. David
Room #:
Last Re-Assessment: 2022-05-10

Area (sqft): 0

ASBESTOS																
System	Component	Material	Item	Covering	A*	V*	AP*	Good	Fair	Poor	Unit	Sample	Asbestos Type	Amount	Hazard	Friable
Ceiling		Plaster			C	Y		100			%	V0000	Non-Asbestos		None	
Floor		Ceramic Tiles			A	Y										
Wall ¹		Masonry			A	Y										

1 - Concrete Block

ALL DATA REPORT

Client: Hamilton-Wentworth Catholic District Sch
Location: #1012 : Corridor
Survey Date: 2018-08-02

Site: Elementary
Floor: 1

Building Name: St. David
Room #:
Last Re-Assessment: 2022-05-10

Area (sqft): 0

ASBESTOS																
System	Component	Material	Item	Covering	A*	V*	AP*	Good	Fair	Poor	Unit	Sample	Asbestos Type	Amount	Hazard	Friable
Ceiling	Acoustic Tile	Ceiling Tiles (lay-in), Short Fissure and Random Pinhole			C	Y		100			%	V0000	Non-Asbestos		None	
Floor		Vinyl Floor Tile and Mastic, Light Green Multi-Fleck			A	Y		100			%	V0000	Non-Asbestos		None	
Floor		Vinyl Floor Tile and Mastic, Green Multi-Fleck			A	Y		100			%	V0000	Non-Asbestos		None	
Wall		Plaster			A	Y		100			%	V0000	Non-Asbestos		None	
Wall ¹		Masonry			A	Y										

1 - Concrete Block

Client: Hamilton-Wentworth Catholic District Sch
Location: #1013 : Storage
Survey Date: 2018-08-02

Site: Elementary
Floor: 1

Building Name: St. David
Room #:
Last Re-Assessment: 2022-05-10

Area (sqft): 0

ASBESTOS																
System	Component	Material	Item	Covering	A*	V*	AP*	Good	Fair	Poor	Unit	Sample	Asbestos Type	Amount	Hazard	Friable
Ceiling	Acoustic Tile	Ceiling Tiles (lay-in), Short Fissure and Random Pinhole			C	Y		100			%	V0000	Non-Asbestos		None	
Floor		Vinyl Floor Tile and Mastic, Light Green Multi-Fleck			A	Y		100			%	V0000	Non-Asbestos		None	
Floor		Vinyl Floor Tile and Mastic, Green Multi-Fleck			A	Y		100			%	V0000	Non-Asbestos		None	
Wall		Plaster			A	Y		100			%	V0000	Non-Asbestos		None	
Wall ¹		Masonry			A	Y										

1 - Concrete Block

ALL DATA REPORT

Client: Hamilton-Wentworth Catholic District Sch
Location: #1014 : Classroom
Survey Date: 2018-08-02

Site: Elementary
Floor: 1

Building Name: St. David
Room #: 117
Last Re-Assessment: 2022-05-10

Area (sqft): 0

ASBESTOS																
System	Component	Material	Item	Covering	A*	V*	AP*	Good	Fair	Poor	Unit	Sample	Asbestos Type	Amount	Hazard	Friable
Ceiling	Acoustic Tile	Ceiling Tiles (lay-in), Short Fissure and Random Pinhole			C	Y		100			%	V0000	Non-Asbestos		None	
Floor		Vinyl Floor Tile and Mastic, Light Green Multi-Fleck			A	Y		100			%	V0000	Non-Asbestos		None	
Floor		Vinyl Floor Tile and Mastic, Green Multi-Fleck			A	Y		100			%	V0000	Non-Asbestos		None	
Wall		Plaster			A	Y		100			%	V0000	Non-Asbestos		None	
Wall ¹		Masonry			A	Y										

1 - Concrete Block

Client: Hamilton-Wentworth Catholic District Sch
Location: #1015 : Classroom
Survey Date: 2018-08-02

Site: Elementary
Floor: 1

Building Name: St. David
Room #: 118
Last Re-Assessment: 2022-05-10

Area (sqft): 0

ASBESTOS																
System	Component	Material	Item	Covering	A*	V*	AP*	Good	Fair	Poor	Unit	Sample	Asbestos Type	Amount	Hazard	Friable
Ceiling	Acoustic Tile	Ceiling Tiles (lay-in), Short Fissure and Random Pinhole			C	Y		100			%	V0000	Non-Asbestos		None	
Floor		Vinyl Floor Tile and Mastic, Light Green Multi-Fleck			A	Y		100			%	V0000	Non-Asbestos		None	
Floor		Vinyl Floor Tile and Mastic, Green Multi-Fleck			A	Y		100			%	V0000	Non-Asbestos		None	
Wall		Plaster			A	Y		100			%	V0000	Non-Asbestos		None	
Wall ¹		Masonry			A	Y										

1 - Concrete Block

ALL DATA REPORT

Client: Hamilton-Wentworth Catholic District Sch
Location: #1016 : Chapel
Survey Date: 2018-08-02

Site: Elementary
Floor: 1

Building Name: St. David
Room #:
Last Re-Assessment: 2022-05-10

Area (sqft): 0

ASBESTOS																
System	Component	Material	Item	Covering	A*	V*	AP*	Good	Fair	Poor	Unit	Sample	Asbestos Type	Amount	Hazard	Friable
Ceiling	Acoustic Tile	Ceiling Tiles (lay-in), Short Fissure and Random Pinhole			C	Y		100			%	V0000	Non-Asbestos		None	
Floor		Carpet			A	Y										
Wall ¹		Masonry			A	Y										
Wall		Texture Coat			A	Y		100			%	S0003ABC	None Detected	N.D.	None	

1 - Faux Brick

Client: Hamilton-Wentworth Catholic District Sch
Location: #1017 : Corridor
Survey Date: 2018-08-02

Site: Elementary
Floor: 1

Building Name: St. David
Room #:
Last Re-Assessment: 2022-05-10

Area (sqft): 0

ASBESTOS																
System	Component	Material	Item	Covering	A*	V*	AP*	Good	Fair	Poor	Unit	Sample	Asbestos Type	Amount	Hazard	Friable
Ceiling		Plaster			C	Y		100			%	V0000	Non-Asbestos		None	
Floor		Ceramic Tiles			A	Y										
Wall ¹		Masonry			A	Y										

1 - Concrete Block

ALL DATA REPORT

Client: Hamilton-Wentworth Catholic District Sch
Location: #1019 : Classroom
Survey Date: 2018-08-02

Site: Elementary
Floor: 1

Building Name: St. David
Room #: 123
Last Re-Assessment: 2022-05-10

Area (sqft): 0

ASBESTOS																
System	Component	Material	Item	Covering	A*	V*	AP*	Good	Fair	Poor	Unit	Sample	Asbestos Type	Amount	Hazard	Friable
Ceiling	Acoustic Tile	Ceiling Tiles (lay-in), Small and Irregular Pinhole			C	Y		100			%	V0000	Non-Asbestos		None	
Floor		Mastic		Vinyl Floor Tile	D	N		100(7)			%	V9500	Presumed Asbestos		Presumed Asbestos	NF
Floor		Vinyl Floor Tile, Beige Multi-Fleck			A	Y		100			%	V0000	Non-Asbestos		None	
Wall ¹		Masonry			A	Y										

1 - Concrete Block

Client: Hamilton-Wentworth Catholic District Sch
Location: #1020 : Classroom
Survey Date: 2018-08-02

Site: Elementary
Floor: 1

Building Name: St. David
Room #: 122
Last Re-Assessment: 2022-05-10

Area (sqft): 0

ASBESTOS																
System	Component	Material	Item	Covering	A*	V*	AP*	Good	Fair	Poor	Unit	Sample	Asbestos Type	Amount	Hazard	Friable
Ceiling	Acoustic Tile	Ceiling Tiles (lay-in), Short Fissure and Random Pinhole			C	Y		100			%	V0000	Non-Asbestos		None	
Floor		Mastic		Vinyl Floor Tile	D	N		100(7)			%	V9500	Presumed Asbestos		Presumed Asbestos	NF
Floor		Vinyl Floor Tile, Beige Multi-Fleck			A	Y		100			%	V0000	Non-Asbestos		None	
Wall ¹		Masonry			A	Y										

1 - Concrete Block

ALL DATA REPORT

Client: Hamilton-Wentworth Catholic District Sch
Location: #1021 : Cafeteria
Survey Date: 2018-08-02

Site: Elementary
Floor: 1

Building Name: St. David
Room #:
Last Re-Assessment: 2022-05-10

Area (sqft): 0

ASBESTOS																
System	Component	Material	Item	Covering	A*	V*	AP*	Good	Fair	Poor	Unit	Sample	Asbestos Type	Amount	Hazard	Friable
Ceiling	Acoustic Tile	Ceiling Tiles (lay-in), Short Fissure and Random Pinhole			C	Y		100			%	V0000	Non-Asbestos		None	
Floor		Vinyl Floor Tile and Mastic, Light Green Multi-Fleck			A	Y		100			%	V0000	Non-Asbestos		None	
Floor		Vinyl Floor Tile and Mastic, Green Multi-Fleck			A	Y		100			%	V0000	Non-Asbestos		None	
Wall		Plaster			A	Y		100			%	V0000	Non-Asbestos		None	
Wall ¹		Masonry			A	Y										

1 - Concrete Block

Client: Hamilton-Wentworth Catholic District Sch
Location: #1022 : Custodian
Survey Date: 2018-08-02

Site: Elementary
Floor: 1

Building Name: St. David
Room #:
Last Re-Assessment: 2022-05-10

Area (sqft): 0

ASBESTOS																
System	Component	Material	Item	Covering	A*	V*	AP*	Good	Fair	Poor	Unit	Sample	Asbestos Type	Amount	Hazard	Friable
Ceiling	Acoustic Tile	Ceiling Tiles (lay-in), Short Fissure and Random Pinhole			C	Y		100			%	V0000	Non-Asbestos		None	
Floor		Vinyl Floor Tile and Mastic, Light Green Multi-Fleck			A	Y		100			%	V0000	Non-Asbestos		None	
Floor		Vinyl Floor Tile and Mastic, Green Multi-Fleck			A	Y		100			%	V0000	Non-Asbestos		None	
Wall		Plaster			A	Y		100			%	V0000	Non-Asbestos		None	
Wall ¹		Masonry			A	Y										

1 - Concrete Block

ALL DATA REPORT

Client: Hamilton-Wentworth Catholic District Sch
Location: #1023 : School Council
Survey Date: 2018-08-02

Site: Elementary
Floor: 1

Building Name: St. David
Room #:
Last Re-Assessment: 2022-05-10

Area (sqft): 0

ASBESTOS																
System	Component	Material	Item	Covering	A*	V*	AP*	Good	Fair	Poor	Unit	Sample	Asbestos Type	Amount	Hazard	Friable
Ceiling		Plaster			C	Y		100			%	V0000	Non-Asbestos		None	
Floor		Ceramic Tiles			A	Y										
Piping ¹		Fibreglass			C	Y										
Wall		Plaster			A	Y		100			%	V0000	Non-Asbestos		None	

1 - Above Ceiling

Client: Hamilton-Wentworth Catholic District Sch
Location: #1024 : Girls Washroom
Survey Date: 2018-08-02

Site: Elementary
Floor: 1

Building Name: St. David
Room #:
Last Re-Assessment: 2022-05-10

Area (sqft): 0

ASBESTOS																
System	Component	Material	Item	Covering	A*	V*	AP*	Good	Fair	Poor	Unit	Sample	Asbestos Type	Amount	Hazard	Friable
Ceiling		Plaster			C	Y		100			%	V0000	Non-Asbestos		None	
Floor		Ceramic Tiles			A	Y										
Wall ¹		Masonry			A	Y										

1 - Concrete Block

ALL DATA REPORT

Client: Hamilton-Wentworth Catholic District Sch
Location: #1025 : Boys Washroom
Survey Date: 2018-08-02

Site: Elementary
Floor: 1

Building Name: St. David
Room #:
Last Re-Assessment: 2022-05-10

Area (sqft): 0

ASBESTOS																
System	Component	Material	Item	Covering	A*	V*	AP*	Good	Fair	Poor	Unit	Sample	Asbestos Type	Amount	Hazard	Friable
Ceiling		Plaster			C	Y		100			%	V0000	Non-Asbestos		None	
Floor		Ceramic Tiles			A	Y										
Wall ¹		Masonry			A	Y										

1 - Concrete Block

Client: Hamilton-Wentworth Catholic District Sch
Location: #1026 : Storage
Survey Date: 2018-08-02

Site: Elementary
Floor: 1

Building Name: St. David
Room #:
Last Re-Assessment: 2022-05-10

Area (sqft): 0

ASBESTOS																
System	Component	Material	Item	Covering	A*	V*	AP*	Good	Fair	Poor	Unit	Sample	Asbestos Type	Amount	Hazard	Friable
Floor		Vinyl Floor Tile and Mastic, Light Green Multi-Fleck			A	Y		100			%	V0000	Non-Asbestos		None	
Floor		Vinyl Floor Tile and Mastic, Green Multi-Fleck			A	Y		100			%	V0000	Non-Asbestos		None	
Structure	Deck	Steel			C	Y										
Wall ¹		Masonry			A	Y										

1 - Concrete Block

ALL DATA REPORT

Client: Hamilton-Wentworth Catholic District Sch
Location: #1027 : Stage Storage
Survey Date: 2018-08-02

Site: Elementary
Floor: 1

Building Name: St. David
Room #:
Last Re-Assessment: 2022-05-10

Area (sqft): 0

ASBESTOS																
System	Component	Material	Item	Covering	A*	V*	AP*	Good	Fair	Poor	Unit	Sample	Asbestos Type	Amount	Hazard	Friable
Floor		Vinyl Floor Tile and Mastic, Light Green Multi-Fleck			A	Y		100			%	V0000	Non-Asbestos		None	
Floor		Vinyl Floor Tile and Mastic, Green Multi-Fleck			A	Y		100			%	V0000	Non-Asbestos		None	
Structure	Deck	Steel			C	Y										
Wall ¹		Masonry			A	Y										

1 - Concrete Block

Client: Hamilton-Wentworth Catholic District Sch
Location: #1028 : Stage Storage
Survey Date: 2018-08-02

Site: Elementary
Floor: 1

Building Name: St. David
Room #:
Last Re-Assessment: 2022-05-10

Area (sqft): 0

ASBESTOS																
System	Component	Material	Item	Covering	A*	V*	AP*	Good	Fair	Poor	Unit	Sample	Asbestos Type	Amount	Hazard	Friable
Floor		Vinyl Floor Tile and Mastic, Light Green Multi-Fleck			A	Y		100			%	V0000	Non-Asbestos		None	
Floor		Vinyl Floor Tile and Mastic, Green Multi-Fleck			A	Y		100			%	V0000	Non-Asbestos		None	
Structure	Deck	Steel			C	Y										
Wall ¹		Masonry			A	Y										

1 - Concrete Block

ALL DATA REPORT

Client: Hamilton-Wentworth Catholic District Sch
Location: #1029 : Stage Storage
Survey Date: 2018-08-02

Site: Elementary
Floor: 1

Building Name: St. David
Room #:
Last Re-Assessment: 2022-05-10

Area (sqft): 0

ASBESTOS																
System	Component	Material	Item	Covering	A*	V*	AP*	Good	Fair	Poor	Unit	Sample	Asbestos Type	Amount	Hazard	Friable
Floor		Vinyl Floor Tile and Mastic, Light Green Multi-Fleck			A	Y		100			%	V0000	Non-Asbestos		None	
Floor		Vinyl Floor Tile and Mastic, Green Multi-Fleck			A	Y		100			%	V0000	Non-Asbestos		None	
Structure	Deck	Steel			C	Y										
Wall ¹		Masonry			A	Y										

1 - Concrete Block

Client: Hamilton-Wentworth Catholic District Sch
Location: #1030 : Stage Storage
Survey Date: 2018-08-02

Site: Elementary
Floor: 1

Building Name: St. David
Room #:
Last Re-Assessment: 2022-05-10

Area (sqft): 0

ASBESTOS																
System	Component	Material	Item	Covering	A*	V*	AP*	Good	Fair	Poor	Unit	Sample	Asbestos Type	Amount	Hazard	Friable
Floor		Vinyl Floor Tile and Mastic, Light Green Multi-Fleck			A	Y		100			%	V0000	Non-Asbestos		None	
Floor		Vinyl Floor Tile and Mastic, Green Multi-Fleck			A	Y		100			%	V0000	Non-Asbestos		None	
Structure	Deck	Steel			C	Y										
Wall ¹		Masonry			A	Y										

1 - Concrete Block

ALL DATA REPORT

Client: Hamilton-Wentworth Catholic District Sch
Location: #1031 : Storage
Survey Date: 2018-08-02

Site: Elementary
Floor: 1

Building Name: St. David
Room #:
Last Re-Assessment: 2022-05-10

Area (sqft): 0

ASBESTOS																
System	Component	Material	Item	Covering	A*	V*	AP*	Good	Fair	Poor	Unit	Sample	Asbestos Type	Amount	Hazard	Friable
Ceiling		Plaster			C	Y		100			%	V0000	Non-Asbestos		None	
Floor		Vinyl Floor Tile and Mastic, Light Green and Multi-Fleck			A	Y		100			%	V0000	Non-Asbestos		None	
Floor		Vinyl Floor Tile and Mastic, Green Multi-Fleck			A	Y		100			%	V0000	Non-Asbestos		None	
Wall ¹		Masonry			A	Y										

1 - Concrete Block

Client: Hamilton-Wentworth Catholic District Sch
Location: #1032 : Storage (Former Shower)
Survey Date: 2018-08-02

Site: Elementary
Floor: 1

Building Name: St. David
Room #:
Last Re-Assessment: 2022-05-10

Area (sqft): 0

ASBESTOS																
System	Component	Material	Item	Covering	A*	V*	AP*	Good	Fair	Poor	Unit	Sample	Asbestos Type	Amount	Hazard	Friable
Ceiling ¹		Plaster			C	Y		100			%	V0000	Non-Asbestos		None	
Floor		Ceramic Tiles			A	Y										
Wall ²		Masonry			A	Y										
Wall		Ceramic Tiles			A	Y										

1 - Hard Textured Plaster

2 - Concrete Block

ALL DATA REPORT

Client: Hamilton-Wentworth Catholic District Sch
Location: #1033 : Storage
Survey Date: 2018-08-02

Site: Elementary
Floor: 1

Building Name: St. David
Room #:
Last Re-Assessment: 2022-05-10

Area (sqft): 0

ASBESTOS																
System	Component	Material	Item	Covering	A*	V*	AP*	Good	Fair	Poor	Unit	Sample	Asbestos Type	Amount	Hazard	Friable
Ceiling		Plaster			C	Y		100			%	V0000	Non-Asbestos		None	
Floor		Vinyl Floor Tile and Mastic, Light Green Multi-Fleck			A	Y		100			%	V0000	Non-Asbestos		None	
Floor		Vinyl Floor Tile and Mastic, Green Multi-Fleck			A	Y		100			%	V0000	Non-Asbestos		None	
Wall ¹		Masonry			A	Y										

1 - Concrete Block

Client: Hamilton-Wentworth Catholic District Sch
Location: #1034 : Storage
Survey Date: 2018-08-02

Site: Elementary
Floor: 1

Building Name: St. David
Room #:
Last Re-Assessment: 2022-05-10

Area (sqft): 0

ASBESTOS																
System	Component	Material	Item	Covering	A*	V*	AP*	Good	Fair	Poor	Unit	Sample	Asbestos Type	Amount	Hazard	Friable
Ceiling		Plaster			C	Y		100			%	V0000	Non-Asbestos		None	
Floor		Vinyl Floor Tile and Mastic, Light Green Multi-Fleck			A	Y		100			%	V0000	Non-Asbestos		None	
Floor		Vinyl Floor Tile and Mastic, Green Multi-Fleck			A	Y		100			%	V0000	Non-Asbestos		None	
Wall ¹		Masonry			A	Y										

1 - Concrete Block

ALL DATA REPORT

Client: Hamilton-Wentworth Catholic District Sch
Location: #1035 : French Office
Survey Date: 2018-08-02

Site: Elementary
Floor: 1

Building Name: St. David
Room #:
Last Re-Assessment: 2022-05-10

Area (sqft): 0

ASBESTOS																
System	Component	Material	Item	Covering	A*	V*	AP*	Good	Fair	Poor	Unit	Sample	Asbestos Type	Amount	Hazard	Friable
Ceiling	Acoustic Tile	Ceiling Tiles (lay-in), Small and Irregular Pinhole			C	Y		100			%	V0000	Non-Asbestos		None	
Floor		Vinyl Floor Tile and Mastic, Light Green Multi-Fleck			A	Y		100			%	V0000	Non-Asbestos		None	
Floor		Vinyl Floor Tile and Mastic, Green Multi-Fleck			A	Y		100			%	V0000	Non-Asbestos		None	
Wall ¹		Masonry			A	Y										

1 - Concrete Block

Client: Hamilton-Wentworth Catholic District Sch
Location: #1036 : Mens Washroom
Survey Date: 2018-08-02

Site: Elementary
Floor: 1

Building Name: St. David
Room #:
Last Re-Assessment: 2022-05-10

Area (sqft): 0

ASBESTOS																
System	Component	Material	Item	Covering	A*	V*	AP*	Good	Fair	Poor	Unit	Sample	Asbestos Type	Amount	Hazard	Friable
Ceiling		Plaster			C	Y		100			%	V0000	Non-Asbestos		None	
Floor		Ceramic Tiles			A	Y										
Wall ¹		Masonry			A	Y										

1 - Concrete Block

ALL DATA REPORT

Client: Hamilton-Wentworth Catholic District Sch
Location: #1037 : Gym Storage
Survey Date: 2018-08-02

Site: Elementary
Floor: 1

Building Name: St. David
Room #:
Last Re-Assessment: 2022-05-10

Area (sqft): 0

ASBESTOS																
System	Component	Material	Item	Covering	A*	V*	AP*	Good	Fair	Poor	Unit	Sample	Asbestos Type	Amount	Hazard	Friable
Floor		Concrete (poured)			A	Y										
Piping ¹		Fibreglass			C	Y										
Piping		Parging Cement	Fitting		C	Y		4			EA	V0005	None Detected	N.D.	None	
Structure	Deck	Steel			C	Y										
Wall ²		Masonry			A	Y										

1 - Above Ceiling
2 - Concrete Block

Client: Hamilton-Wentworth Catholic District Sch
Location: #1038 : Storage
Survey Date: 2018-08-02

Site: Elementary
Floor: 1

Building Name: St. David
Room #:
Last Re-Assessment: 2022-05-10

Area (sqft): 0

ASBESTOS																
System	Component	Material	Item	Covering	A*	V*	AP*	Good	Fair	Poor	Unit	Sample	Asbestos Type	Amount	Hazard	Friable
Ceiling		Plaster			C	Y		100			%	V0000	Non-Asbestos		None	
Floor		Vinyl Floor Tile and Mastic, Light Green Multi-Fleck			A	Y		100			%	V0000	Non-Asbestos		None	
Floor		Vinyl Floor Tile and Mastic, Green Multi-Fleck			A	Y		100			%	V0000	Non-Asbestos		None	
Wall ¹		Masonry			A	Y										

1 - Concrete Block

ALL DATA REPORT

Client: Hamilton-Wentworth Catholic District Sch
Location: #1039 : Corridor
Survey Date: 2018-08-02

Site: Elementary
Floor: 1

Building Name: St. David
Room #:
Last Re-Assessment: 2022-05-10

Area (sqft): 0

ASBESTOS																
System	Component	Material	Item	Covering	A*	V*	AP*	Good	Fair	Poor	Unit	Sample	Asbestos Type	Amount	Hazard	Friable
Ceiling		Drywall and joint compound			C	Y						V0004	None Detected	N.D.	None	
Ceiling	Acoustic Tile	Ceiling Tiles (lay-in), Short Fissure and Random Pinhole			C	Y		100			%	V0000	Non-Asbestos		None	
Floor		Vinyl Floor Tile and Mastic, Light Green and Multi-Fleck			A	Y		100			%	V0000	Non-Asbestos		None	
Floor		Vinyl Floor Tile and Mastic, Green Multi-Fleck			A	Y		100			%	V0000	Non-Asbestos		None	
Wall		Drywall and joint compound			A	Y		100			%	V0004	None Detected	N.D.	None	
Wall ¹		Masonry			A	Y										

1 - Concrete Block

Client: Hamilton-Wentworth Catholic District Sch
Location: #1040 : Ontario ECE Program
Survey Date: 2018-08-02

Site: Elementary
Floor: 1

Building Name: St. David
Room #:
Last Re-Assessment: 2022-05-10

Area (sqft): 0

ASBESTOS																
System	Component	Material	Item	Covering	A*	V*	AP*	Good	Fair	Poor	Unit	Sample	Asbestos Type	Amount	Hazard	Friable
Ceiling		Drywall and joint compound			C	Y		100			%	V0004	None Detected	N.D.	None	
Ceiling	Acoustic Tile	Ceiling Tiles (lay-in), Short Fissure and Random Pinhole			C	Y		100			%	V0000	Non-Asbestos		None	
Floor		Rubber, Vinyl plank (wood look)			A	Y						V0000	Non-Asbestos		None	
Floor		Mastic		Rubber	D	N		100(7)			%	V9500	Presumed Asbestos		Presumed Asbestos	NF
Piping ¹		Fibreglass			C	Y										
Wall		Drywall and joint compound			A	Y		100			%	S0004C	None Detected	N.D.	None	
Wall ²		Masonry			A	Y										

1 - Above Ceiling

2 - Concrete Block

ALL DATA REPORT

Client: Hamilton-Wentworth Catholic District Sch
Location: #1041 : Ontario ECE Offices
Survey Date: 2018-08-02

Site: Elementary
Floor: 1

Building Name: St. David
Room #:
Last Re-Assessment: 2022-05-10

Area (sqft): 0

ASBESTOS																
System	Component	Material	Item	Covering	A*	V*	AP*	Good	Fair	Poor	Unit	Sample	Asbestos Type	Amount	Hazard	Friable
Ceiling	Acoustic Tile	Ceiling Tiles (lay-in), Short Fissure and Random Pinhole			C	Y		100			%	V0000	Non-Asbestos		None	
Floor		Vinyl Floor Tile and Mastic, Green Multi-Fleck			A	Y		100			%	V0000	Non-Asbestos		None	
Floor		Vinyl Floor Tile and Mastic, Light Green Multi-Fleck			A	Y		100			%	V0000	Non-Asbestos		None	
Wall		Drywall and joint compound			A	Y		100			%	S0004B	None Detected	N.D.	None	
Wall ¹		Masonry			A	Y										

1 - Concrete Block

Client: Hamilton-Wentworth Catholic District Sch
Location: #1042 : Ontario ECE Daycare Washroom
Survey Date: 2018-08-02

Site: Elementary
Floor: 1

Building Name: St. David
Room #:
Last Re-Assessment: 2022-05-10

Area (sqft): 0

ASBESTOS																
System	Component	Material	Item	Covering	A*	V*	AP*	Good	Fair	Poor	Unit	Sample	Asbestos Type	Amount	Hazard	Friable
Ceiling		Drywall and joint compound			C	Y		100			%	V0004	None Detected	N.D.	None	
Floor		Vinyl Floor Tile and Mastic, Green Multi-Fleck			A	Y		100			%	V0000	Non-Asbestos		None	
Floor		Vinyl Floor Tile and Mastic, Light Green Multi-Fleck			A	Y		100			%	V0000	Non-Asbestos		None	
Wall		Drywall and joint compound			A	Y		100			%	V0004	None Detected	N.D.	None	
Wall ¹		Masonry			A	Y										

1 - Concrete Block

ALL DATA REPORT

Client: Hamilton-Wentworth Catholic District Sch
Location: #1043 : Ontario ECE Centre
Survey Date: 2018-08-02

Site: Elementary
Floor: 1

Building Name: St. David
Room #:
Last Re-Assessment: 2022-05-10

Area (sqft): 0

ASBESTOS																
System	Component	Material	Item	Covering	A*	V*	AP*	Good	Fair	Poor	Unit	Sample	Asbestos Type	Amount	Hazard	Friable
Ceiling	Acoustic Tile	Ceiling Tiles (lay-in), Short Fissure and Random Pinhole			C	Y		100			%	V0000	Non-Asbestos		None	
Floor		Vinyl Floor Tile and Mastic, Green Multi-Fleck			A	Y		100			%	V0000	Non-Asbestos		None	
Floor		Vinyl Floor Tile and Mastic, Light Green Multi-Fleck			A	Y		100			%	V0000	Non-Asbestos		None	
Wall		Drywall and joint compound			A	Y		100			%	V0004	None Detected	N.D.	None	
Wall ¹		Masonry			A	Y										

1 - Concrete Block

Client: Hamilton-Wentworth Catholic District Sch
Location: #1044 : Ontario ECE Quiet Room
Survey Date: 2018-08-02

Site: Elementary
Floor: 1

Building Name: St. David
Room #:
Last Re-Assessment: 2022-05-10

Area (sqft): 0

ASBESTOS																
System	Component	Material	Item	Covering	A*	V*	AP*	Good	Fair	Poor	Unit	Sample	Asbestos Type	Amount	Hazard	Friable
Ceiling	Acoustic Tile	Ceiling Tiles (lay-in), Short Fissure and Random Pinhole			C	Y		100			%	V0000	Non-Asbestos		None	
Floor		Rubber, vinyl plank (wood look)			A	Y						V0000	Non-Asbestos		None	
Floor		Mastic		Rubber	D	N		100(7)			%	V9500	Presumed Asbestos		Presumed Asbestos	NF
Wall		Drywall and joint compound			A	Y		100			%	V0004	None Detected	N.D.	None	
Wall ¹		Masonry			A	Y										

1 - Concrete Block

ALL DATA REPORT

Client: Hamilton-Wentworth Catholic District Sch
Location: #1045 : Ontario ECE Storage
Survey Date: 2018-08-02

Site: Elementary
Floor: 1

Building Name: St. David
Room #:
Last Re-Assessment: 2022-05-10

Area (sqft): 0

ASBESTOS																
System	Component	Material	Item	Covering	A*	V*	AP*	Good	Fair	Poor	Unit	Sample	Asbestos Type	Amount	Hazard	Friable
Ceiling	Acoustic Tile	Ceiling Tiles (lay-in), Short Fissure and Random Pinhole			C	Y		100			%	V0000	Non-Asbestos		None	
Floor		Vinyl Floor Tile and Mastic, Green Multi-Fleck			A	Y		100			%	V0000	Non-Asbestos		None	
Floor		Vinyl Floor Tile and Mastic, Light Green Multi-Fleck			A	Y		100			%	V0000	Non-Asbestos		None	
Wall		Drywall and joint compound			A	Y		100			%	V0004	None Detected	N.D.	None	

Client: Hamilton-Wentworth Catholic District Sch
Location: #1046 : Ontario ECE Play Area
Survey Date: 2018-08-02

Site: Elementary
Floor: 1

Building Name: St. David
Room #:
Last Re-Assessment: 2022-05-10

Area (sqft): 0

ASBESTOS																
System	Component	Material	Item	Covering	A*	V*	AP*	Good	Fair	Poor	Unit	Sample	Asbestos Type	Amount	Hazard	Friable
Ceiling	Acoustic Tile	Ceiling Tiles (lay-in), Short Fissure with Ransom Pinhole			C	Y		100			%	V0000	Non-Asbestos		None	
Floor		Vinyl Floor Tile and Mastic, Green Multi-Fleck			A	Y		100			%	V0000	Non-Asbestos		None	
Floor		Vinyl Floor Tile and Mastic, Light Green Multi-Fleck			A	Y		100			%	V0000	Non-Asbestos		None	
Wall		Drywall and joint compound			A	Y		100			%	S0004A	None Detected	N.D.	None	
Wall ¹		Masonry			A	Y										

1 - Concrete Block

ALL DATA REPORT

Client: Hamilton-Wentworth Catholic District Sch
Location: #1047 : Abandoned Stairwell
Survey Date: 2018-08-02

Site: Elementary
Floor: 1

Building Name: St. David
Room #:
Last Re-Assessment: 2022-05-10

Area (sqft): 0

ASBESTOS																
System	Component	Material	Item	Covering	A*	V*	AP*	Good	Fair	Poor	Unit	Sample	Asbestos Type	Amount	Hazard	Friable
Ceiling		Plaster			C	Y		100			%	V0000	Non-Asbestos		None	
Floor		Vinyl Floor Tile and Mastic, Green Multi-Fleck			A	Y		100			%	V0000	Non-Asbestos		None	
Floor		Vinyl Floor Tile and Mastic, Light Green Multi-Fleck			A	Y		100			%	V0000	Non-Asbestos		None	
Wall ¹		Masonry			A	Y										

1 - Concrete Block

Client: Hamilton-Wentworth Catholic District Sch
Location: #1048 : Storage
Survey Date: 2018-08-02

Site: Elementary
Floor: 1

Building Name: St. David
Room #:
Last Re-Assessment: 2022-05-10

Area (sqft): 0

ASBESTOS																
System	Component	Material	Item	Covering	A*	V*	AP*	Good	Fair	Poor	Unit	Sample	Asbestos Type	Amount	Hazard	Friable
Ceiling		Plaster			C	Y		100			%	V0000	Non-Asbestos		None	
Floor		Vinyl Floor Tile and Mastic, Green Multi-Fleck			A	Y		100			%	V0000	Non-Asbestos		None	
Floor		Vinyl Floor Tile and Mastic, Light Green Multi-Fleck			A	Y		100			%	V0000	Non-Asbestos		None	
Wall ¹		Masonry			A	Y										

1 - Concrete Block

ALL DATA REPORT

Client: Hamilton-Wentworth Catholic District Sch
Location: #1049 : Former Shower Room
Survey Date: 2018-08-02

Site: Elementary
Floor: 1

Building Name: St. David
Room #:
Last Re-Assessment: 2022-05-10

Area (sqft): 0

ASBESTOS																
System	Component	Material	Item	Covering	A*	V*	AP*	Good	Fair	Poor	Unit	Sample	Asbestos Type	Amount	Hazard	Friable
Ceiling ¹		Plaster			C	Y		100			%	V0000	Non-Asbestos		None	
Floor		Ceramic Tiles			A	Y										
Wall ²		Masonry			A	Y										

1 - Hard Textured Plaster
2 - Concrete Block

Client: Hamilton-Wentworth Catholic District Sch
Location: #2001 : Electrical Room
Survey Date: 2018-08-02

Site: Elementary
Floor: 2

Building Name: St. David
Room #:
Last Re-Assessment: 2022-05-10

Area (sqft): 0

ASBESTOS																
System	Component	Material	Item	Covering	A*	V*	AP*	Good	Fair	Poor	Unit	Sample	Asbestos Type	Amount	Hazard	Friable
Ceiling	Acoustic Tile	Ceiling Tiles (lay-in), Short Fissure and Random Pinhole			C	Y		100			%	V0000	Non-Asbestos		None	
Floor		Concrete (poured)			A	Y										
Wall ¹		Masonry			A	Y										

1 - Concrete Block

ALL DATA REPORT

Client: Hamilton-Wentworth Catholic District Sch
Location: #2002 : Staff Washroom
Survey Date: 2018-08-02

Site: Elementary
Floor: 2

Building Name: St. David
Room #:
Last Re-Assessment: 2022-05-10

Area (sqft): 0

ASBESTOS																
System	Component	Material	Item	Covering	A*	V*	AP*	Good	Fair	Poor	Unit	Sample	Asbestos Type	Amount	Hazard	Friable
Ceiling		Plaster			C	Y		100			%	V0000	Non-Asbestos		None	
Floor		Ceramic Tiles			A	Y										
Wall ¹		Masonry			A	Y										

1 - Concrete Block

Client: Hamilton-Wentworth Catholic District Sch
Location: #2003 : Staff Washroom
Survey Date: 2018-08-02

Site: Elementary
Floor: 2

Building Name: St. David
Room #:
Last Re-Assessment: 2022-05-10

Area (sqft): 0

ASBESTOS																
System	Component	Material	Item	Covering	A*	V*	AP*	Good	Fair	Poor	Unit	Sample	Asbestos Type	Amount	Hazard	Friable
Ceiling		Plaster			C	Y		100			%	V0000	Non-Asbestos		None	
Floor		Ceramic Tiles			A	Y										
Wall ¹		Masonry			A	Y										

1 - Concrete Block

ALL DATA REPORT

Client: Hamilton-Wentworth Catholic District Sch
Location: #2004 : Corridor
Survey Date: 2018-08-02

Site: Elementary
Floor: 2

Building Name: St. David
Room #:
Last Re-Assessment: 2022-05-10

Area (sqft): 0

ASBESTOS																
System	Component	Material	Item	Covering	A*	V*	AP*	Good	Fair	Poor	Unit	Sample	Asbestos Type	Amount	Hazard	Friable
Ceiling	Acoustic Tile	Ceiling Tiles (lay-in), Short Fissure and Random Pinhole			C	Y		100			%	V0000	Non-Asbestos		None	
Floor		Vinyl Floor Tile and Mastic, Light Green Multi-Fleck			A	Y		100			%	V0000	Non-Asbestos		None	
Floor		Mastic		Vinyl Floor Tile	D	N		100(7)			%	V9500	Presumed Asbestos		Presumed Asbestos	NF
Floor		Vinyl Floor Tile, Beige Multi-Fleck			A	Y		100			%	V0000	Non-Asbestos		None	
Wall ¹		Masonry			A	Y										

1 - Concrete Block

Client: Hamilton-Wentworth Catholic District Sch
Location: #2005 : Classroom
Survey Date: 2018-08-02

Site: Elementary
Floor: 2

Building Name: St. David
Room #: 213
Last Re-Assessment: 2022-05-10

Area (sqft): 0

ASBESTOS																
System	Component	Material	Item	Covering	A*	V*	AP*	Good	Fair	Poor	Unit	Sample	Asbestos Type	Amount	Hazard	Friable
Ceiling	Acoustic Tile	Ceiling Tiles (lay-in), Short Fissure and Random Pinhole			C	Y		100			%	V0000	Non-Asbestos		None	
Floor		Vinyl Floor Tile and Mastic, Light Green Multi-Fleck			A	Y		100			%	V0000	Non-Asbestos		None	
Wall ¹		Masonry			A	Y										

1 - Concrete Block

ALL DATA REPORT

Client: Hamilton-Wentworth Catholic District Sch
Location: #2006 : Classroom
Survey Date: 2018-08-02

Site: Elementary
Floor: 2

Building Name: St. David
Room #: 218
Last Re-Assessment: 2022-05-10

Area (sqft): 0

ASBESTOS																
System	Component	Material	Item	Covering	A*	V*	AP*	Good	Fair	Poor	Unit	Sample	Asbestos Type	Amount	Hazard	Friable
Ceiling	Acoustic Tile	Ceiling Tiles (lay-in), Short Fissure and Random Pinhole			C	Y		100			%	V0000	Non-Asbestos		None	
Floor		Vinyl Floor Tile and Mastic, Light Green Multi-Fleck			A	Y		100			%	V0000	Non-Asbestos		None	
Floor		Mastic		Vinyl Floor Tile	D	N		100(7)			%	V9500	Presumed Asbestos		Presumed Asbestos	NF
Floor		Vinyl Floor Tile, Beige Multi-Fleck			A	Y		100			%	V0000	Non-Asbestos		None	
Wall ¹		Masonry			A	Y										

1 - Concrete Block

Client: Hamilton-Wentworth Catholic District Sch
Location: #2007 : Classroom
Survey Date: 2018-08-02

Site: Elementary
Floor: 2

Building Name: St. David
Room #: 211
Last Re-Assessment: 2022-05-10

Area (sqft): 0

ASBESTOS																
System	Component	Material	Item	Covering	A*	V*	AP*	Good	Fair	Poor	Unit	Sample	Asbestos Type	Amount	Hazard	Friable
Ceiling	Acoustic Tile	Ceiling Tiles (lay-in), Short Fissure and Random Pinhole			C	Y		100			%	V0000	Non-Asbestos		None	
Floor		Vinyl Floor Tile and Mastic, Light Green Multi-Fleck			A	Y		100			%	V0000	Non-Asbestos		None	
Wall ¹		Masonry			A	Y										

1 - Concrete Block

ALL DATA REPORT

Client: Hamilton-Wentworth Catholic District Sch
Location: #2008 : Book Room
Survey Date: 2018-08-02

Site: Elementary
Floor: 2

Building Name: St. David
Room #:
Last Re-Assessment: 2022-05-10

Area (sqft): 0

ASBESTOS																
System	Component	Material	Item	Covering	A*	V*	AP*	Good	Fair	Poor	Unit	Sample	Asbestos Type	Amount	Hazard	Friable
Ceiling	Acoustic Tile	Ceiling Tiles (lay-in), Short Fissure and Random Pinhole			C	Y		100			%	V0000	Non-Asbestos		None	
Floor		Vinyl Floor Tile and Mastic, Light Green Multi-Fleck			A	Y		100			%	V0000	Non-Asbestos		None	
Wall ¹		Masonry			A	Y										

1 - Concrete Block

Client: Hamilton-Wentworth Catholic District Sch
Location: #2009 : Hot Water Room
Survey Date: 2018-08-02

Site: Elementary
Floor: 2

Building Name: St. David
Room #:
Last Re-Assessment: 2022-05-10

Area (sqft): 0

ASBESTOS																
System	Component	Material	Item	Covering	A*	V*	AP*	Good	Fair	Poor	Unit	Sample	Asbestos Type	Amount	Hazard	Friable
Ceiling	Acoustic Tile	Ceiling Tiles (lay-in), Short Fissure and Random Pinhole			C	Y		100			%	V0000	Non-Asbestos		None	
Floor		Concrete (poured)			A	Y										
Piping		Fibreglass			C	Y										
Piping		Parging Cement	Fitting		C	Y		3			EA	V0005	None Detected	N.D.	None	
Wall ¹		Masonry			A	Y										

1 - Concrete Block

ALL DATA REPORT

Client: Hamilton-Wentworth Catholic District Sch
Location: #2010 : Classroom
Survey Date: 2018-08-02

Site: Elementary
Floor: 2

Building Name: St. David
Room #: 208
Last Re-Assessment: 2022-05-10

Area (sqft): 0

ASBESTOS																
System	Component	Material	Item	Covering	A*	V*	AP*	Good	Fair	Poor	Unit	Sample	Asbestos Type	Amount	Hazard	Friable
Ceiling	Acoustic Tile	Ceiling Tiles (lay-in), Small and Irregular Pinhole			C	Y		100			%	V0000	Non-Asbestos		None	
Floor		Vinyl Floor Tile and Mastic, Light Green Multi-Fleck			A	Y		100			%	V0000	Non-Asbestos		None	
Wall		Drywall and joint compound			A	Y		100			%	V0001	None Detected	N.D.	None	
Wall ¹		Masonry			A	Y										

1 - Concrete Block

Client: Hamilton-Wentworth Catholic District Sch
Location: #2011 : Classroom
Survey Date: 2018-08-02

Site: Elementary
Floor: 2

Building Name: St. David
Room #: 207
Last Re-Assessment: 2022-05-10

Area (sqft): 0

ASBESTOS																
System	Component	Material	Item	Covering	A*	V*	AP*	Good	Fair	Poor	Unit	Sample	Asbestos Type	Amount	Hazard	Friable
Ceiling	Acoustic Tile	Ceiling Tiles (lay-in), Small and Irregular Pinhole			C	Y		100			%	V0000	Non-Asbestos		None	
Ceiling	Acoustic Tile	Ceiling Tiles (lay-in), Short Fissure and Random Pinhole			C	Y		100			%	V0000	Non-Asbestos		None	
Floor		Vinyl Floor Tile and Mastic, Light Green Multi-Fleck			A	Y		100			%	V0000	Non-Asbestos		None	
Wall		Drywall and joint compound			A	Y		100			%	S0001C	None Detected	N.D.	None	
Wall ¹		Masonry			A	Y										

1 - Concrete Block

ALL DATA REPORT

Client: Hamilton-Wentworth Catholic District Sch
Location: #2012 : Classroom
Survey Date: 2018-08-02

Site: Elementary
Floor: 2

Building Name: St. David
Room #: 206
Last Re-Assessment: 2022-05-10

Area (sqft): 0

ASBESTOS																
System	Component	Material	Item	Covering	A*	V*	AP*	Good	Fair	Poor	Unit	Sample	Asbestos Type	Amount	Hazard	Friable
Ceiling	Acoustic Tile	Ceiling Tiles (lay-in), Short Fissure and Random Pinhole			C	Y		100			%	V0000	Non-Asbestos		None	
Floor		Vinyl Floor Tile and Mastic, Light Green Multi-Fleck			A	Y		100			%	V0000	Non-Asbestos		None	
Floor		Mastic		Vinyl Floor Tile	D	N		100(7)			%	V9500	Presumed Asbestos		Presumed Asbestos	NF
Floor		Vinyl Floor Tile, Beige Multi-Fleck			A	Y		100			%	V0000	Non-Asbestos		None	
Wall		Drywall and joint compound			A	Y		100			%	V0001	None Detected	N.D.	None	
Wall ¹		Masonry			A	Y										

1 - Concrete Block

Client: Hamilton-Wentworth Catholic District Sch
Location: #2013 : Classroom
Survey Date: 2018-08-02

Site: Elementary
Floor: 2

Building Name: St. David
Room #: 205
Last Re-Assessment: 2022-05-10

Area (sqft): 0

ASBESTOS																
System	Component	Material	Item	Covering	A*	V*	AP*	Good	Fair	Poor	Unit	Sample	Asbestos Type	Amount	Hazard	Friable
Ceiling	Acoustic Tile	Ceiling Tiles (lay-in), Small and Irregular Pinhole			C	Y		100			%	V0000	Non-Asbestos		None	
Ceiling	Acoustic Tile	Ceiling Tiles (lay-in), Short Fissure and Random Pinhole			C	Y		100			%	V0000	Non-Asbestos		None	
Floor		Mastic		Vinyl Floor Tile	D	N		100(7)			%	V9500	Presumed Asbestos		Presumed Asbestos	NF
Floor		Vinyl Floor Tile, Beige Multi-Fleck			A	Y		100			%	V0000	Non-Asbestos		None	
Wall		Drywall and joint compound			A	Y		100			%	V0001	None Detected	N.D.	None	
Wall ¹		Masonry			A	Y										

1 - Concrete Block

ALL DATA REPORT

Client: Hamilton-Wentworth Catholic District Sch
Location: #2014 : Classroom
Survey Date: 2018-08-02

Site: Elementary
Floor: 2

Building Name: St. David
Room #: 204
Last Re-Assessment: 2022-05-10

Area (sqft): 0

ASBESTOS																
System	Component	Material	Item	Covering	A*	V*	AP*	Good	Fair	Poor	Unit	Sample	Asbestos Type	Amount	Hazard	Friable
Ceiling	Acoustic Tile	Ceiling Tiles (lay-in), Small and Irregular Pinhole			C	Y		100			%	V0000	Non-Asbestos		None	
Ceiling	Acoustic Tile	Ceiling Tiles (lay-in), Short Fissure and Random Pinhole			C	Y		100			%	V0000	Non-Asbestos		None	
Floor		Mastic		Vinyl Floor Tile	D	N		100(7)			%	V9500	Presumed Asbestos		Presumed Asbestos	NF
Floor		Vinyl Floor Tile, Beige Multi-Fleck			A	Y		100			%	V0000	Non-Asbestos		None	
Wall		Drywall and joint compound			A	Y		100			%	S0001A	None Detected	N.D.	None	
Wall ¹		Masonry			A	Y										

1 - Concrete Block

Client: Hamilton-Wentworth Catholic District Sch
Location: #2015 : LRT Room
Survey Date: 2018-08-02

Site: Elementary
Floor: 2

Building Name: St. David
Room #:
Last Re-Assessment: 2022-05-10

Area (sqft): 0

ASBESTOS																
System	Component	Material	Item	Covering	A*	V*	AP*	Good	Fair	Poor	Unit	Sample	Asbestos Type	Amount	Hazard	Friable
Ceiling	Acoustic Tile	Ceiling Tiles (lay-in), Short Fissure and Random Pinhole			C	Y		100			%	V0000	Non-Asbestos		None	
Floor		Vinyl Floor Tile and Mastic, Light Green Multi-Fleck			A	Y		100			%	V0000	Non-Asbestos		None	
Floor		Mastic		Vinyl Floor Tile	D	N		100(7)			%	V9500	Presumed Asbestos		Presumed Asbestos	NF
Floor		Vinyl Floor Tile, Beige and Multi-Fleck			A	Y		100			%	V0000	Non-Asbestos		None	
Wall ¹		Masonry			A	Y										

1 - Concrete Block

ALL DATA REPORT

Client: Hamilton-Wentworth Catholic District Sch
Location: #2016 : Server Room
Survey Date: 2018-08-02

Site: Elementary
Floor: 2

Building Name: St. David
Room #:
Last Re-Assessment: 2022-05-10

Area (sqft): 0

ASBESTOS																
System	Component	Material	Item	Covering	A*	V*	AP*	Good	Fair	Poor	Unit	Sample	Asbestos Type	Amount	Hazard	Friable
Ceiling	Acoustic Tile	Ceiling Tiles (lay-in), Short Fissure and Random Pinhole			C	Y		100			%	V0000	Non-Asbestos		None	
Floor		Vinyl Floor Tile and Mastic, Light Green Multi-Fleck			A	Y		100			%	V0000	Non-Asbestos		None	
Floor		Mastic		Vinyl Floor Tile	D	N		100(7)			%	V9500	Presumed Asbestos		Presumed Asbestos	NF
Floor		Vinyl Floor Tile, Beige Multi-Fleck			A	Y		100			%	V0000	Non-Asbestos		None	
Wall ¹		Masonry			A	Y										

1 - Concrete Block

Client: Hamilton-Wentworth Catholic District Sch
Location: #2017 : Classroom
Survey Date: 2018-08-02

Site: Elementary
Floor: 2

Building Name: St. David
Room #: 201
Last Re-Assessment: 2022-05-10

Area (sqft): 0

ASBESTOS																
System	Component	Material	Item	Covering	A*	V*	AP*	Good	Fair	Poor	Unit	Sample	Asbestos Type	Amount	Hazard	Friable
Ceiling	Acoustic Tile	Ceiling Tiles (lay-in), Short Fissure and Random Pinhole			C	Y		100			%	V0000	Non-Asbestos		None	
Floor		Mastic		Vinyl Floor Tile	D	N		100(7)			%	V9500	Presumed Asbestos		Presumed Asbestos	NF
Floor		Vinyl Floor Tile, Beige Multi-Fleck			A	Y		100			%	V0000	Non-Asbestos		None	
Wall ¹		Masonry			A	Y										

1 - Concrete Block

ALL DATA REPORT

Client: Hamilton-Wentworth Catholic District Sch
Location: #2018 : Corridor
Survey Date: 2018-08-02

Site: Elementary
Floor: 2

Building Name: St. David
Room #:
Last Re-Assessment: 2022-05-10

Area (sqft): 0

ASBESTOS																
System	Component	Material	Item	Covering	A*	V*	AP*	Good	Fair	Poor	Unit	Sample	Asbestos Type	Amount	Hazard	Friable
Floor		Mastic		Vinyl Floor Tile	D	N		100(7)			%	V9500	Presumed Asbestos		Presumed Asbestos	NF
Floor		Vinyl Floor Tile, Beige Multi-Fleck			A	Y		100			%	V0000	Non-Asbestos		None	
Mechanical Equipment		None Found														
Wall		Drywall and joint compound			A	Y		100			%	V0002	None Detected	N.D.	None	

Client: Hamilton-Wentworth Catholic District Sch
Location: #2019 : Corridor
Survey Date: 2018-08-02

Site: Elementary
Floor: 2

Building Name: St. David
Room #:
Last Re-Assessment: 2022-05-10

Area (sqft): 0

ASBESTOS																
System	Component	Material	Item	Covering	A*	V*	AP*	Good	Fair	Poor	Unit	Sample	Asbestos Type	Amount	Hazard	Friable
Ceiling	Acoustic Tile	Ceiling Tiles (lay-in), Short Fissure and Random Pinhole			C	Y		100			%	V0000	Non-Asbestos		None	
Floor		Mastic		Vinyl Floor Tile	D	N		100(7)			%	V9500	Presumed Asbestos		Presumed Asbestos	NF
Floor		Vinyl Floor Tile, Beige Multi-Fleck			A	Y		100			%	V0000	Non-Asbestos		None	
Piping		Fibreglass			C	Y										
Wall		Drywall and joint compound			A	Y		100			%	V0002	None Detected	N.D.	None	

ALL DATA REPORT

Client: Hamilton-Wentworth Catholic District Sch
Location: #2020 : Library
Survey Date: 2018-08-02

Site: Elementary
Floor: 2

Building Name: St. David
Room #:
Last Re-Assessment: 2022-05-10

Area (sqft): 0

ASBESTOS																
System	Component	Material	Item	Covering	A*	V*	AP*	Good	Fair	Poor	Unit	Sample	Asbestos Type	Amount	Hazard	Friable
Ceiling	Acoustic Tile	Ceiling Tiles (lay-in), Short Fissure and Random Pinhole			C	Y		100			%	V0000	Non-Asbestos		None	
Floor		Carpet			A	Y										
Piping		Fibreglass			C	Y										
Wall		Drywall and joint compound			A	Y		100			%	S0002A	None Detected	N.D.	None	

Client: Hamilton-Wentworth Catholic District Sch
Location: #2021 : Office
Survey Date: 2018-08-02

Site: Elementary
Floor: 2

Building Name: St. David
Room #:
Last Re-Assessment: 2022-05-10

Area (sqft): 0

ASBESTOS																
System	Component	Material	Item	Covering	A*	V*	AP*	Good	Fair	Poor	Unit	Sample	Asbestos Type	Amount	Hazard	Friable
Ceiling	Acoustic Tile	Ceiling Tiles (lay-in), Short Fissure and Random Pinhole			C	Y		100			%	V0000	Non-Asbestos		None	
Floor		Mastic		Vinyl Floor Tile	D	N		100(7)			%	V9500	Presumed Asbestos		Presumed Asbestos	NF
Floor		Vinyl Floor Tile, Beige Multi-Fleck			A	Y		100			%	V0000	Non-Asbestos		None	
Wall		Drywall and joint compound			A	Y		100			%	V0002	None Detected	N.D.	None	

ALL DATA REPORT

Client: Hamilton-Wentworth Catholic District Sch
Location: #2022 : Reading Recovery
Survey Date: 2018-08-02

Site: Elementary
Floor: 2

Building Name: St. David
Room #:
Last Re-Assessment: 2022-05-10

Area (sqft): 0

ASBESTOS																
System	Component	Material	Item	Covering	A*	V*	AP*	Good	Fair	Poor	Unit	Sample	Asbestos Type	Amount	Hazard	Friable
Ceiling	Acoustic Tile	Ceiling Tiles (lay-in), Short Fissure and Random Pinhole			C	Y		100			%	V0000	Non-Asbestos		None	
Floor		Mastic		Vinyl Floor Tile	D	N		100(7)			%	V9500	Presumed Asbestos		Presumed Asbestos	NF
Floor		Vinyl Floor Tile, Beige Multi-Fleck			A	Y		100			%	V0000	Non-Asbestos		None	
Wall		Drywall and joint compound			A	Y		100			%	V0002	None Detected	N.D.	None	

Client: Hamilton-Wentworth Catholic District Sch
Location: #2023 : Girls Washroom
Survey Date: 2018-08-02

Site: Elementary
Floor: 2

Building Name: St. David
Room #:
Last Re-Assessment: 2022-05-10

Area (sqft): 0

ASBESTOS																
System	Component	Material	Item	Covering	A*	V*	AP*	Good	Fair	Poor	Unit	Sample	Asbestos Type	Amount	Hazard	Friable
Ceiling		Plaster			C	Y		100			%	V0000	Non-Asbestos		None	
Floor		Ceramic Tiles			A	Y										
Wall ¹		Masonry			A	Y										

1 - Concrete Block

ALL DATA REPORT

Client: Hamilton-Wentworth Catholic District Sch
Location: #2024 : Boys Washroom
Survey Date: 2018-08-02

Site: Elementary
Floor: 2

Building Name: St. David
Room #:
Last Re-Assessment: 2022-05-10

Area (sqft): 0

ASBESTOS																
System	Component	Material	Item	Covering	A*	V*	AP*	Good	Fair	Poor	Unit	Sample	Asbestos Type	Amount	Hazard	Friable
Ceiling		Plaster			C	Y		100			%	V0000	Non-Asbestos		None	
Floor		Ceramic Tiles			A	Y										
Wall ¹		Masonry			A	Y										

1 - Concrete Block

Client: Hamilton-Wentworth Catholic District Sch
Location: #2025 : Classroom
Survey Date: 2018-08-02

Site: Elementary
Floor: 2

Building Name: St. David
Room #: 224
Last Re-Assessment: 2022-05-10

Area (sqft): 0

ASBESTOS																
System	Component	Material	Item	Covering	A*	V*	AP*	Good	Fair	Poor	Unit	Sample	Asbestos Type	Amount	Hazard	Friable
Ceiling	Acoustic Tile	Ceiling Tiles (lay-in), Short Fissure and Random Pinhole			C	Y		100			%	V0000	Non-Asbestos		None	
Ceiling	Acoustic Tile	Ceiling Tiles (lay-in), Small Irregular Pinhole			C	Y		100			%	V0000	Non-Asbestos		None	
Floor		Vinyl Floor Tile and Mastic, Light Green Multi-Fleck			A	Y		100			%	V0000	Non-Asbestos		None	
Piping		Fibreglass			C	Y										
Wall		Drywall and joint compound			A	Y		100			%	V0002	None Detected	N.D.	None	
Wall ¹		Masonry			A	Y										

1 - Concrete Block

ALL DATA REPORT

Client: Hamilton-Wentworth Catholic District Sch
Location: #2026 : Classroom
Survey Date: 2018-08-02

Site: Elementary
Floor: 2

Building Name: St. David
Room #: 223
Last Re-Assessment: 2022-05-10

Area (sqft): 0

ASBESTOS																
System	Component	Material	Item	Covering	A*	V*	AP*	Good	Fair	Poor	Unit	Sample	Asbestos Type	Amount	Hazard	Friable
Ceiling	Acoustic Tile	Ceiling Tiles (lay-in), Short Fissure and Random Pinhole			C	Y		100			%	V0000	Non-Asbestos		None	
Ceiling	Acoustic Tile	Ceiling Tiles (lay-in), Small and Irregular Pinhole			C	Y		100			%	V0000	Non-Asbestos		None	
Floor		Mastic		Vinyl Floor Tile	D	N		100(7)			%	V9500	Presumed Asbestos		Presumed Asbestos	NF
Floor		Vinyl Floor Tile, Beige Multi-Fleck			A	Y		100			%	V0000	Non-Asbestos		None	
Piping		Fibreglass			C	Y										
Wall		Drywall and joint compound			A	Y		100			%	S0002C	None Detected	N.D.	None	
Wall ¹		Masonry			A	Y										

1 - Concrete Block

ALL DATA REPORT

Client: Hamilton-Wentworth Catholic District Sch
Location: #2027 : Computer Lab
Survey Date: 2018-08-02

Site: Elementary
Floor: 2

Building Name: St. David
Room #:
Last Re-Assessment: 2022-05-10

Area (sqft): 0

ASBESTOS																
System	Component	Material	Item	Covering	A*	V*	AP*	Good	Fair	Poor	Unit	Sample	Asbestos Type	Amount	Hazard	Friable
Ceiling	Acoustic Tile	Ceiling Tiles (lay-in), Short Fissure and Random Pinhole			C	Y		100			%	V0000	Non-Asbestos		None	
Floor		Mastic		Vinyl Floor Tile	D	N		100(7)			%	V9500	Presumed Asbestos		Presumed Asbestos	NF
Floor		Vinyl Floor Tile, Beige Multi-Fleck			A	Y		100			%	V0000	Non-Asbestos		None	
Piping		Fibreglass			C	Y										
Wall		Drywall and joint compound			A	Y		100			%	S0002B	None Detected	N.D.	None	

Client: Hamilton-Wentworth Catholic District Sch
Location: #2028 : Classroom
Survey Date: 2018-08-02

Site: Elementary
Floor: 2

Building Name: St. David
Room #: 220
Last Re-Assessment: 2022-05-10

Area (sqft): 0

ASBESTOS																
System	Component	Material	Item	Covering	A*	V*	AP*	Good	Fair	Poor	Unit	Sample	Asbestos Type	Amount	Hazard	Friable
Ceiling	Acoustic Tile	Ceiling Tiles (lay-in), Short Fissure and Random Pinhole			C	Y		100			%	V0000	Non-Asbestos		None	
Floor		Vinyl Floor Tile and Mastic, Light Green Multi-Fleck			A	Y		100			%	V0000	Non-Asbestos		None	
Floor		Mastic		Vinyl Floor Tile	D	N		100(7)			%	V9500	Presumed Asbestos		Presumed Asbestos	NF
Floor		Vinyl Floor Tile, Beige Multi-Fleck			A	Y		100			%	V0000	Non-Asbestos		None	
Wall		Drywall and joint compound			A	Y		100			%	V0001	None Detected	N.D.	None	
Wall ¹		Masonry			A	Y										

1 - Concrete Block

ALL DATA REPORT

Client: Hamilton-Wentworth Catholic District Sch
Location: #2029 : Classroom
Survey Date: 2018-08-02

Site: Elementary
Floor: 2

Building Name: St. David
Room #: 219
Last Re-Assessment: 2022-05-10

Area (sqft): 0

ASBESTOS																
System	Component	Material	Item	Covering	A*	V*	AP*	Good	Fair	Poor	Unit	Sample	Asbestos Type	Amount	Hazard	Friable
Ceiling	Acoustic Tile	Ceiling Tiles (lay-in), Short Fissure and Random Pinhole			C	Y		100			%	V0000	Non-Asbestos		None	
Floor		Vinyl Floor Tile and Mastic, Light Green Multi-Fleck			A	Y		100			%	V0000	Non-Asbestos		None	
Wall		Drywall and joint compound			A	Y		100			%	S0001B	None Detected	N.D.	None	
Wall ¹		Masonry			A	Y										

1 - Concrete Block

Client: Hamilton-Wentworth Catholic District Sch
Location: #2030 : Classroom
Survey Date: 2018-08-02

Site: Elementary
Floor: 2

Building Name: St. David
Room #: 218
Last Re-Assessment: 2022-05-10

Area (sqft): 0

ASBESTOS																
System	Component	Material	Item	Covering	A*	V*	AP*	Good	Fair	Poor	Unit	Sample	Asbestos Type	Amount	Hazard	Friable
Ceiling	Acoustic Tile	Ceiling Tiles (lay-in), Short Fissure and Random Pinhole			C	Y		100			%	V0000	Non-Asbestos		None	
Floor		Vinyl Floor Tile and Mastic, Light Green Multi-Fleck			A	Y		100			%	V0000	Non-Asbestos		None	
Wall		Drywall and joint compound			A	Y		100			%	V0001	None Detected	N.D.	None	
Wall ¹		Masonry			A	Y										

1 - Concrete Block

ALL DATA REPORT

Client: Hamilton-Wentworth Catholic District Sch
Location: #2031 : Classroom
Survey Date: 2018-08-02

Site: Elementary
Floor: 2

Building Name: St. David
Room #: 217
Last Re-Assessment: 2022-05-10

Area (sqft): 0

ASBESTOS																
System	Component	Material	Item	Covering	A*	V*	AP*	Good	Fair	Poor	Unit	Sample	Asbestos Type	Amount	Hazard	Friable
Ceiling	Acoustic Tile	Ceiling Tiles (lay-in), Short Fissure and Random Pinhole			C	Y		100			%	V0000	Non-Asbestos		None	
Floor		Vinyl Floor Tile and Mastic, Light Green Multi-Fleck			A	Y		100			%	V0000	Non-Asbestos		None	
Wall		Drywall and joint compound			A	Y		100			%	V0001	None Detected	N.D.	None	
Wall ¹		Masonry			A	Y										

1 - Concrete Block

Legend:



Sample number		Units		Other	
S####	Asbestos sample collected	SF	Square feet	A	Access
V####	Material visually similar to numbered sample collected	LF	Linear feet	V	Visible
V0000	Known non-asbestos material	EA	Each	AP	Air Plenum
V9000	Visually identified as an asbestos material	%	Percentage	F	Friable material
V9500	Material is presumed to be an asbestos material			NF	Non Friable material
				PF	Potentially Friable material

Access	
A	Accessible to all building occupants
B	Accessible to maintenance and operations staff without a ladder
C	Accessible to maintenance and operations staff with a ladder. Also rarely entered, locked areas
D	Not normally accessible

Condition	
Good	No visible damage or deterioration
Fair	Minor, repairable damage, cracking, delamination or deterioration
Poor	Irreparable damage or deterioration with exposed and missing material

Visible	
Y	The material is visible when standing on the floor of the room, without the removal or opening of other building components (e.g. ceiling tiles or access panels).
N	The material is not visible to view when standing on the floor of the room and requires the removal of a building component (e.g. ceilings tiles or access panels) to view and access. Includes rarely entered crawlspaces, attic spaces, etc. Observations will be limited to the extent visible from the access points.

Air Plenum	
Yes or No	The material is in a return air plenum or in a direct airstream or there is evidence of air erosion (e.g. duct for heating or cooling blowing directly on or across an ACM). This field is only completed where Air Plenum consideration is required by regulation.

Colour Coding	
	The material is known to contain regulated concentrations of asbestos; either by analytical results or visible identification (use of the V9000 code).
	The material is presumed to contain asbestos; based on visual appearances; typically a material known to historically contain asbestos; however, not sampled due to limited access or the destructive nature of the sampling.

Action					
(1)	Clean up of ACM Debris	(2)	Precautions for Access Which may Disturb ACM Debris	(3)	ACM removal
(4)	Precautions for Work Which may Disturb ACM in Poor Condition	(5)	Proactive ACM removal (Minimum repair required for fair condition)	(6)	ACM repair
(7)	Management program and surveillance				

APPENDIX V
Drawings

NOT ALL KNOWN OR SUSPECTED ASBESTOS BUILDING MATERIALS MAY BE DEPICTED ON THE DRAWING. REFER TO THE ASBESTOS REASSESSMENT REPORT FOR A COMPLETE LIST OF KNOWN AND SUSPECTED ASBESTOS BUILDING MATERIALS.

LEGEND IS COLOUR DEPENDENT. NON-COLOUR COPIES MAY ALTER INTERPRETATION.

BASE PLAN PROVIDED BY CLIENT.



905-577-6206 www.pinchin.com

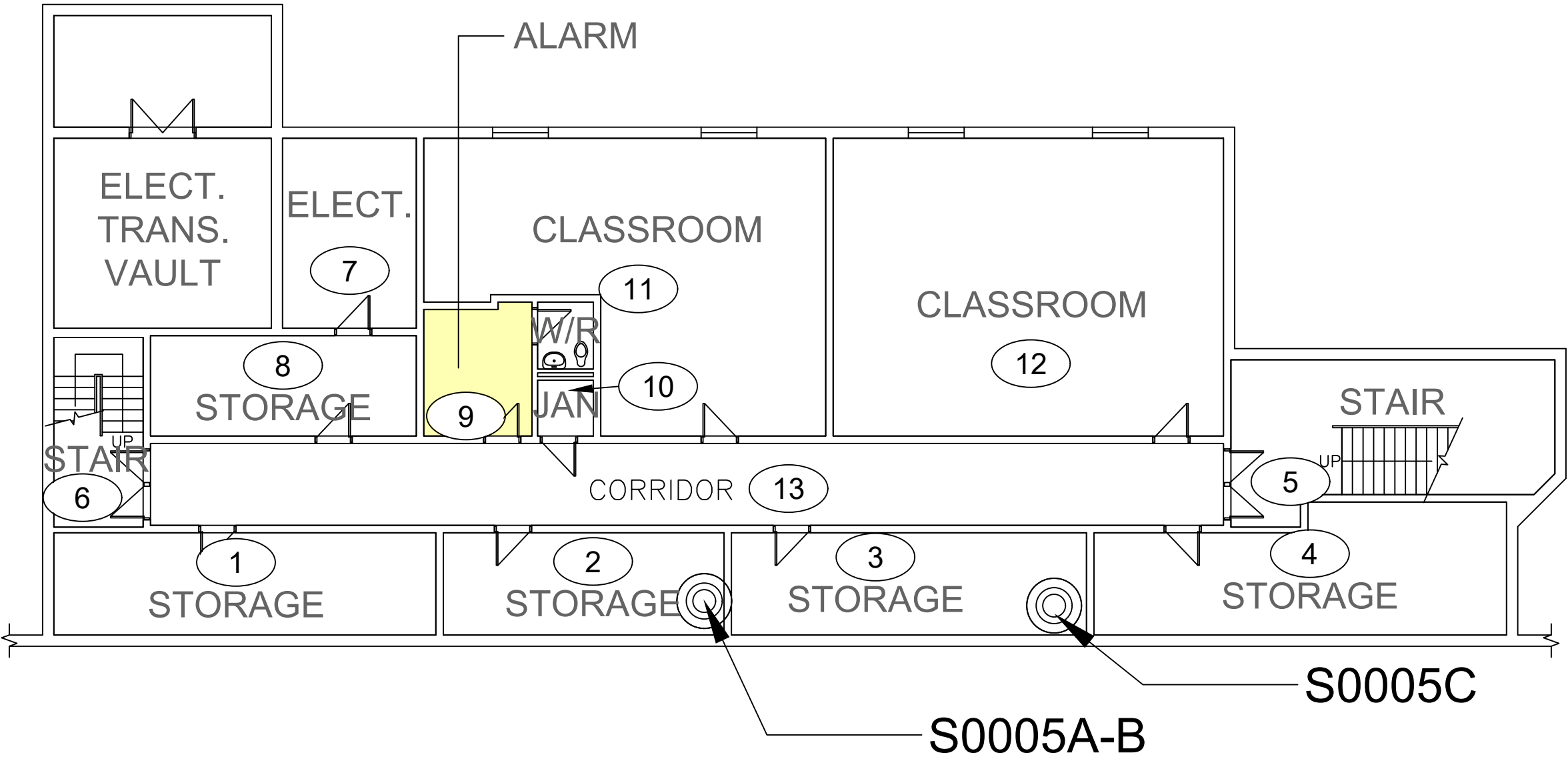
LEGEND:

(X) LOCATION NUMBER

⊙ ASBESTOS BULK SAMPLE

ASBESTOS-CONTAINING MATERIALS:

MASTIC



CLIENT:



LOCATION:

ST. DAVID
33 CROMWELL CRESCENT
HAMILTON, ONTARIO

TITLE:

ASBESTOS REASSESSMENT
BASEMENT

DATE:

AUGUST 2022

PROJECT # :

303992.004

DRAWN BY:

EB

CHECKED BY:

EB

SCALE:

NTS

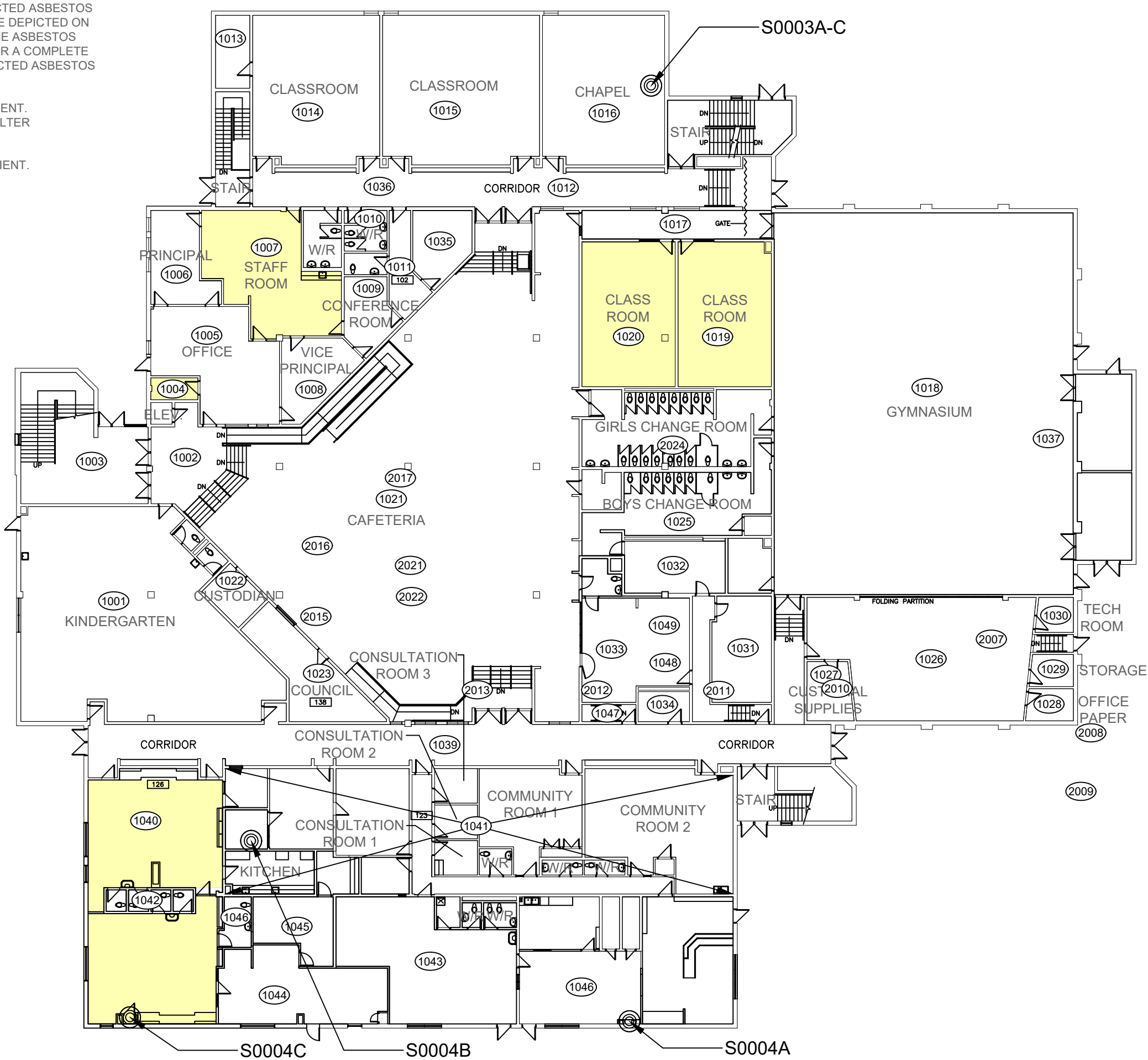
DRAWING:

1 OF 3

NOT ALL KNOWN OR SUSPECTED ASBESTOS BUILDING MATERIALS MAY BE DEPICTED ON THE DRAWING. REFER TO THE ASBESTOS REASSESSMENT REPORT FOR A COMPLETE LIST OF KNOWN AND SUSPECTED ASBESTOS BUILDING MATERIALS.

LEGEND IS COLOUR DEPENDENT. NON-COLOUR COPIES MAY ALTER INTERPRETATION.

BASE PLAN PROVIDED BY CLIENT.



905-577-6206 www.pinchin.com

LEGEND:

- (X) LOCATION NUMBER
- (C) ASBESTOS BULK SAMPLE

ASBESTOS-CONTAINING MATERIALS:

MASTIC

CLIENT:



LOCATION:

ST. DAVID
33 CROMWELL CRESCENT
HAMILTON, ONTARIO

TITLE:

ASBESTOS REASSESSMENT
FIRST FLOOR

DATE:

AUGUST 2022

PROJECT #:

303992.004

DRAWN BY:

EB

CHECKED BY:

EB

SCALE:

NTS

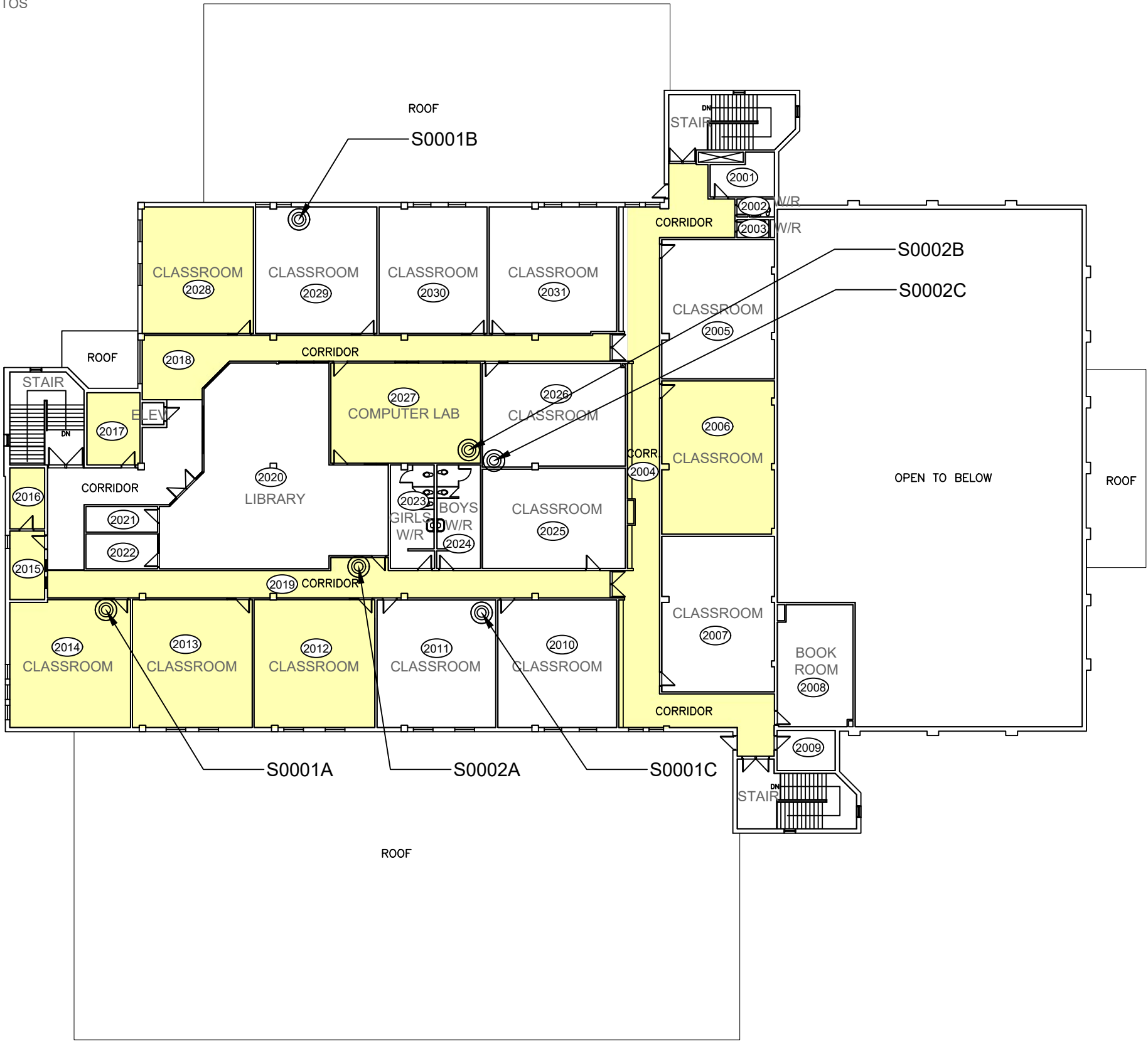
DRAWING:

2 OF 3

NOT ALL KNOWN OR SUSPECTED ASBESTOS BUILDING MATERIALS MAY BE DEPICTED ON THE DRAWING. REFER TO THE ASBESTOS REASSESSMENT REPORT FOR A COMPLETE LIST OF KNOWN AND SUSPECTED ASBESTOS BUILDING MATERIALS.

LEGEND IS COLOUR DEPENDENT. NON-COLOUR COPIES MAY ALTER INTERPRETATION.

BASE PLAN PROVIDED BY CLIENT.



905-577-6206 www.pinchin.com

LEGEND:

(X) LOCATION NUMBER

(X) ASBESTOS BULK SAMPLE

ASBESTOS-CONTAINING MATERIALS:

MASTIC

CLIENT:



LOCATION:

ST. DAVID
33 CROMWELL CRESCENT
HAMILTON, ONTARIO

TITLE:

ASBESTOS REASSESSMENT
SECOND FLOOR

DATE:

AUGUST 2022

PROJECT # :

303992.004

DRAWN BY:

EB

CHECKED BY:

EB

SCALE:

NTS

DRAWING:

3 OF 3