



Asbestos Reassessment

St. Charles Centre
45 Young Street, Hamilton,
Ontario

Prepared for:

**Hamilton-Wentworth Catholic
District School Board**

90 Mulberry Street
Hamilton, Ontario, L8N 3R9

August 30, 2022

Pinchin File: 303922.004



Asbestos Reassessment

St. Charles Centre, 45 Young Street, Hamilton, Ontario
Hamilton-Wentworth Catholic District School Board

August 30, 2022
Pinchin File: 303922.004

Issued to: Hamilton-Wentworth Catholic District
School Board
Issued on: August 30, 2022
Pinchin File: 303922.004
Issuing Office: Hamilton, ON
Pinchin Contact: Emily Balfour, Project Manager
365.889.5147
ebalfour@pinchin.com



Hamilton-Wentworth
Catholic District School Board
Believing. Achieving. Serving

Author: Luke Thompson ADip.T.(Arch)
Project Technologist
289.922.8960
lthompson@pinchin.com

Reviewer: Damian Palus, C.E.T.
Operations Manager
289.678.0694
dpalus@pinchin.com



EXECUTIVE SUMMARY

Hamilton-Wentworth Catholic District School Board (Client) retained Pinchin Ltd. (Pinchin) to conduct an asbestos building materials reassessment at the subject building.

The objective of the reassessment was to evaluate the condition and quantity of previously reported asbestos-containing materials (ACM), and develop corrective action plans as required for the purposes of long-term management. The results of this reassessment are not intended for construction, renovation, demolition or project tendering purposes.

Summary of Recommendations

The following is a summary of significant recommendations; refer to the body of the report for detailed recommendations:

- Perform a reassessment of asbestos materials on an annual basis.
- Perform a pre-construction assessment and remove all asbestos-containing materials (ACM) prior to alteration or maintenance work if ACM may be disturbed by the work.
- Follow appropriate safe work procedures when handling or disturbing asbestos.
- Sample any presumed ACM prior to alteration or maintenance work if presumed ACM may be disturbed by the work.
- Remediate the materials as described in Section 4.2.

This Executive Summary is subject to the same standard limitations as contained in the report and must be read in conjunction with the entire report.



Asbestos Reassessment

St. Charles Centre, 45 Young Street, Hamilton, Ontario
Hamilton-Wentworth Catholic District School Board

August 30, 2022
Pinchin File: 303922.004

TABLE OF CONTENTS

1.0	INTRODUCTION AND SCOPE	1
1.1	Scope of Assessment	1
2.0	BACKGROUND INFORMATION	1
2.1	Building Year of Construction	1
2.2	Existing Reports	1
3.0	FINDINGS	2
3.1	Excluded Asbestos Materials	2
3.2	Confirmed/Presumed Asbestos-Containing Materials and Confirmed Non-Asbestos Materials	3
4.0	RECOMMENDATIONS	6
4.1	General	6
4.2	Remedial Work	6
4.3	On-going Management and Maintenance	6
5.0	TERMS AND LIMITATIONS	7
6.0	REFERENCES	7

APPENDICES

APPENDIX I	Asbestos Analytical Certificates
APPENDIX II	Location List
APPENDIX III	Hazardous Materials Summary / Sample Log Report
APPENDIX IV	All Data Report
APPENDIX V	Drawings



1.0 INTRODUCTION AND SCOPE

Hamilton-Wentworth Catholic District School Board (Client) retained Pinchin Ltd. (Pinchin) to conduct an asbestos building materials reassessment at St. Charles Centre, located at 45 Young Street, Hamilton, Ontario.

The reassessment was performed by Luke Thompson, Project Technologist on May 30, 2022.

The objectives of the reassessment were to document the locations, quantities and conditions of previously identified asbestos-containing building materials, and develop corrective action plans as required. This reassessment is only to be used for the purposes of long-term management and routine maintenance. The results of this reassessment are not to be used for construction, renovation, demolition or project tendering purposes.

1.1 Scope of Assessment

The objective of the reassessment was to evaluate the condition and quantity of previously reported asbestos-containing materials (ACM's), and develop corrective action plans as required.

Refer to the Asbestos Building Materials Reassessment Methodology report and Annex A dated 2022, Pinchin File 303992.004, for the methodology used during the reassessment.

2.0 BACKGROUND INFORMATION

2.1 Building Year of Construction

Item	Details
Year of Construction	1965

2.2 Existing Reports

2.2.1 Review of Previous Reports

Pinchin previously prepared the following reports, which have been reviewed and relied upon as part of this assessment:

- Asbestos Assessment, St. Charles Centre, 45 Young Street, Hamilton, Ontario, September 2018, Prepared by Pinchin Ltd., Pinchin File: 224334.
- Asbestos Reassessment, St. Charles Centre, 45 Young Street, Hamilton, Ontario, September 2019, Prepared by Pinchin Ltd., Pinchin File: 243241.
- Asbestos Reassessment, St. Charles Centre, 45 Young Street, Hamilton, Ontario, July 2020, Prepared by Pinchin Ltd., Pinchin File: 272113.



Asbestos Reassessment

St. Charles Centre, 45 Young Street, Hamilton, Ontario
Hamilton-Wentworth Catholic District School Board

August 30, 2022
Pinchin File: 303922.004

- Asbestos Reassessment, St. Charles Centre, 45 Young Street, Hamilton, Ontario, July 2021, Prepared by Pinchin Ltd., Pinchin File: 286533.001.

3.0 FINDINGS

The following section summarizes the findings of the reassessment and provides a general description of the asbestos materials identified. For details on quantities, assessment, friability, condition, and locations of asbestos materials; refer to the Hazardous Materials Summary / Sample Log Report and All Data Report in Appendices III and IV, respectively.

Previous analytical sample results have been relied upon and were included in the original asbestos assessment report completed by MTE Consultants Inc. Additional samples results where collected by Pinchin have been included in Appendix I.

3.1 Excluded Asbestos Materials



A number of materials which might contain asbestos were not sampled during this reassessment due to limitations in scope and methodology. Where present, these materials are assumed to contain asbestos until otherwise proven by sampling and analysis. These materials are not shown on the drawings in Appendix V. Excluded materials presumed to contain asbestos include:


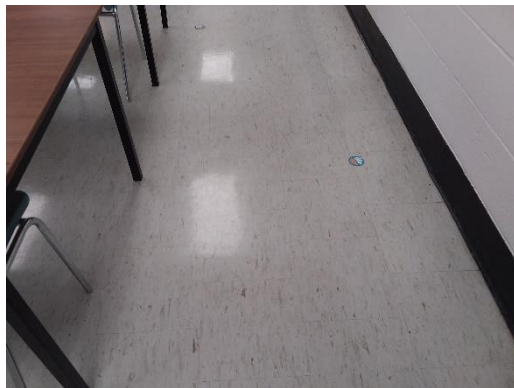
Material	Friability
Roofing, felts and tar	Non-friable
Concrete floor levelling compound	Non-friable
Electrical components or wiring within control centers, breakers, motors or lights, insulation on wiring	Non-friable
Vermiculite in concrete block wall cavities	Friable
Adhesives and duct mastics	Non-friable
Caulking and butyl seals	Non-friable
Fibre reinforced paints and coatings	Non-friable
Paper products	Non-friable
Soffit and fascia boards	Non-friable
Mechanical packing, ropes and gaskets	Non-friable
Vinyl baseboards	Non-friable


Material	Friability
Exterior cladding	Non-friable
Fire resistant doors or metal clad finishes	Non-friable
Vibration dampers on HVAC equipment	Non-friable

3.2 Confirmed/Presumed Asbestos-Containing Materials and Confirmed Non-Asbestos Materials

This section includes materials that have been presumed asbestos-containing by visual identification. Refer to the drawings in Appendix V for the locations of confirmed and presumed ACMs indicated via hatching or symbols. The locations of samples from the historical assessments, performed by Pinchin, have been included on the drawings.

Material and Application	Asbestos Type/Friability	Photo
Parging cement is present on pipe fittings (elbows, valves, tees, hangers etc.)	Chrysotile/Friable	
Sweatwrap insulation (brown layered paper) is present on straight sections of pipes.	None	

Material and Application	Asbestos Type/Friability	Photo
Remaining pipes are either uninsulated or insulated with non-asbestos fibreglass or elastomeric insulation (Armaflex).	None	
Ducts are either uninsulated or insulated with non-asbestos fibreglass.	None	
Mechanical equipment is either uninsulated or insulated with non-asbestos fibreglass.	None	
All ceiling tiles are presumed to be non-asbestos based on the date of manufacture determined from the date stamp applied to the top of the tiles.	None	
Vinyl floor tiles, 9"x9", yellow, are present.	Presumed/Non-friable (tile) Presumed/Non-friable (mastic)	
Vinyl floor tiles, 12"x12", white with green and beige streak, are present.	Presumed/Non-friable (tile) Presumed/Non-friable (mastic)	

Material and Application	Asbestos Type/Friability	Photo
Vinyl floor tiles, 12"x12", white with black fleck, are present.	Presumed/Non-friable (tile) Presumed/Non-friable (mastic)	
Vinyl floor tiles, 12"x12", beige with tan streaks, are present.	Presumed/Non-friable (tile) Presumed/Non-friable (mastic)	
Vinyl floor tiles, 12"x12", green with white fleck, are present.	Presumed/Non-friable (tile) Presumed/Non-friable (mastic)	



Material and Application	Asbestos Type/Friability	Photo
Remaining vinyl floor tiles were presumed to be non-asbestos based on historical knowledge of the date of installation. Mastic underneath new flooring is presumed to contain asbestos until further sampling proves otherwise.	None (tile) Presumed/Non-friable (mastic)	

4.0 RECOMMENDATIONS

4.1 General

Perform a detailed intrusive assessment prior to building renovation or demolition operations. The assessment should include; destructive testing (i.e. coring and/or removal of building finishes and components), sampling of other hazardous materials (lead, mercury, PCBs, mould, etc.), and materials not tested in this study (i.e. excluded asbestos materials).

4.2 Remedial Work

Material, Quantity & Condition	Location Name (Location #)	Recommended Procedure
Pipe insulation, 1 fitting, poor condition	Women's Washroom (Location 1008)	Asbestos precautions for work in ceiling space which may disturb asbestos in poor condition.

4.3 On-going Management and Maintenance

The following recommendations are made regarding on-going management and maintenance work involving the asbestos materials identified.

4.3.1 Asbestos

Maintain the Asbestos Management Program (AMP).

Perform a reassessment of asbestos materials on an annual basis.

Remove asbestos-containing materials (ACM) prior to alteration or maintenance work if ACM may be disturbed by the work. Follow appropriate asbestos precautions for the classification of work being performed.

Sample presumed ACM prior to alteration or maintenance work if the presumed ACM may be disturbed by the work.



Update the asbestos inventory report upon completion of any abatement and removal of asbestos-containing materials.

5.0 TERMS AND LIMITATIONS

This work was performed subject to the Terms and Limitations presented or referenced in the proposal for this project.

Information provided by Pinchin is intended for Client use only. Pinchin will not provide results or information to any party unless disclosure by Pinchin is required by law. Any use by a third party of reports or documents authored by Pinchin or any reliance by a third party on or decisions made by a third party based on the findings described in said documents, is the sole responsibility of such third parties. Pinchin accepts no responsibility for damages suffered by any third party as a result of decisions made or actions conducted. No other warranties are implied or expressed.

6.0 REFERENCES

The following legislation and documents were referenced in completing the assessment and this report:

1. Asbestos on Construction Projects and in Buildings and Repair Operations, Ontario Regulation 278/05.
2. Designated Substances, Ontario Regulation 490/09.

J:\303000s\0303992.000 HWCDSB,Various2022Projects,ASB,CONS\0303992.004 HWCDSB,AllFacilities,2022,ASB,REASSMT\Deliverables\Adult\St. Charles Centre\Report\303922.004 St Charles Centre ACM Reassmnt Report HWCDSB Aug 30 2022.docx

Template: Master Report for Asbestos Reassessment, HAZ, April 23, 2019

APPENDIX I
Asbestos Analytical Certificates



Pinchin Ltd. Asbestos Laboratory *Certificate of Analysis*

Project Name:	Hamilton-Wentworth Catholic School Board, St. Charles Centre, 45 Young Street, Hamilton, Ontario		
Project No.:	0272113.000		
Prepared For:	E. Balfour / M. Maiorana		
Lab Reference No.:	b230662	Date Received:	May 21, 2020
Analyst(s):	K. Cockburn	Date Analyzed:	June 1, 2020
		# Samples submitted:	6
		# Phases analyzed:	7

Method of Analysis:

EPA 600/R-93/116 - Method for the Determination of Asbestos in Bulk Building Materials dated July, 1993

Bulk samples are checked visually and scanned under a stereomicroscope. Slides are prepared and observed under a Polarized Light Microscope (PLM) at magnifications of 40X, 100X or 400X as appropriate. Asbestos fibres are identified by a combination of morphology, colour, refractive index, extinction, sign of elongation, birefringence and dispersion staining colours. A visual estimate is made of the percentage of asbestos present. A reported concentration of less than (<) the regulatory threshold (see chart below) indicates the presence of confirmed asbestos in trace quantities, limited to only a few fibres or fibre bundles in an entire sample. This method complies with provincial regulatory requirements where applicable. Multiple phases within a sample are analyzed and reported separately.

All bulk samples submitted to this laboratory for asbestos analysis are retained for a minimum of three months. Samples may be retrieved, upon request, for re-examination at any time during that period.

The Pinchin Ltd. Mississauga asbestos laboratory is accredited by the National Institute of Standards and Technology, National Voluntary Laboratory Accreditation Program (NVLAP Lab Code 101270-0) for the 'EPA – 40 CFR Appendix E to Subpart E of Part 763, Interim Method of the Determination of Asbestos in Bulk Insulation Samples,' and the 'EPA 600/R-93/116: Method for the Determination of Asbestos in Bulk Building Materials'; and meets all requirements of ISO/IEC 17025:2005.

This report relates only to the items tested.

NOTE: *This test report may not be reproduced, except in full, without the written approval of the laboratory. The client may not use this report to claim product endorsement by NVLAP or any agency of the U.S. Government. This report is valid only when signed in blue ink by the analyst. Vinyl asbestos floor tiles contain very fine fibres of asbestos and may be missed by some laboratories using the PLM method. Internal verification studies performed by Pinchin indicate that the chance of missing asbestos in floor tiles is no higher than about 2%. The vinyl tile study and laboratory documentation on measurement uncertainty is available upon request. The analysis of dust samples by PLM cannot be used as an indicator of past or present airborne asbestos fibre levels.*



Pinchin Ltd. Asbestos Laboratory

Certificate of Analysis

Project Name: Hamilton-Wentworth Catholic School Board, St. Charles Centre,
 45 Young Street, Hamilton, Ontario
Project No.: 0272113.000
Prepared For: E. Balfour / M. Maiorana

Lab Reference No.: b230662
Date Analyzed: June 1, 2020

BULK SAMPLE ANALYSIS

SAMPLE IDENTIFICATION	SAMPLE DESCRIPTION	% COMPOSITION (VISUAL ESTIMATE)			
		ASBESTOS		OTHER	
S0001A Parging cement, Men's Washroom, Location 1007	Homogeneous, grey, soft, parging cement.	Chrysotile	50-75%	Non-Fibrous Material	25-50%
S0001B Parging cement, Men's Washroom, Location 1007				Not Analyzed	
Comments:	Analysis was stopped due to a previous positive result.				
S0001C Parging cement, Men's Washroom, Location 1007				Not Analyzed	
Comments:	Analysis was stopped due to a previous positive result.				
S0002A Sweatwrap, Corridor, Location 1005	2 Phases: a) Homogeneous, beige, dimpled, layered paper.	None Detected		Cellulose	> 75%
	b) Homogeneous, black, layered paper.	None Detected		Non-Fibrous Material	0.5-5%
S0002B Sweatwrap, Corridor, Location 1005	2 Phases: a) Homogeneous, beige, dimpled, layered paper.	None Detected		Cellulose	> 75%
	b) Homogeneous, black, layered paper.	None Detected		Non-Fibrous Material	0.5-5%
				Cellulose	50-75%
				Tar and other non-fibrous	25-50%



Pinchin Ltd. Asbestos Laboratory
Certificate of Analysis

Project Name: Hamilton-Wentworth Catholic School Board, St. Charles Centre,
45 Young Street, Hamilton, Ontario
Project No.: 0272113.000
Prepared For: E. Balfour / M. Maiorana

Lab Reference No.: b230662
Date Analyzed: June 1, 2020

BULK SAMPLE ANALYSIS

SAMPLE IDENTIFICATION	SAMPLE DESCRIPTION	% COMPOSITION (VISUAL ESTIMATE)	
		ASBESTOS	OTHER
S0002C Sweatwrap, Corridor, Location 1005	2 Phases: a) Homogeneous, beige, dimpled, layered paper.	None Detected	Cellulose > 75% Non-Fibrous Material 0.5-5%
	b) Homogeneous, black, layered paper.	None Detected	Cellulose 50-75% Tar and other non- fibrous 25-50%

Reviewed by:

Reporting Analyst:



MEMBER OF
PG
THE PINCHIN GROUP

Analyzed by: *[Signature]*
Reviewed by: *[Signature]*
Report Sent by: *[Signature]*

Instructions:

Pinchin Ltd. - Asbestos Laboratory Internal Asbestos Bulk Sample Chain of Custody

Client Name:	Hamilton-Wentworth Catholic School Board	Project Address:	45 Young Street, Hamilton, Ontario
Portfolio/Building No:	St. Charles Centre	Pinchin File:	272113
Submitted by:	Emily Balfour	Email:	ebalfour@pinchin.com
CC Results to:	Michael Maiorana	CC Email:	mmaiorana@pinchin.com
Invoice to:	Accounts Payable	Invoice Email:	ap@pinchin.com
Date Submitted:	May 19 2020	Required by:	May 26 2020
# of Samples:	6	Priority:	5 Day Turnaround
Year of Building Construction (Mandatory Field):	1953		
Do NOT Stop on Positive (Sample Numbers):			
Pinchin Group Company (Mandatory Field):	Pinchin		

To be Completed by Lab Personnel Only:

Lab Reference #:	6230662 <i>CH</i>		Time:	24 hour clock		
Received by:	MAY 21 2020		Date:	Month	Day	Year
Name(s) of Analyst(s):	<i>[Signature]</i> 2020/06/01					
Sample Prefix	Sample No.	Sample Suffix	Sample Description/Location (Mandatory)			
	S0001	A	Parging cement, Men's Washroom, Location 1007 <i>CH 50-757</i>			
	S0001	B	Parging cement, Men's Washroom, Location 1007 <i>- NA -</i>			
	S0001	C	Parging cement, Men's Washroom, Location 1007 <i>- NA -</i>			
	S0002	A	Sweatwrap, Corridor, Location 1005 <i>a) ND b) ND</i>			
	S0002	B	Sweatwrap, Corridor, Location 1005 <i>a) ND b) ND</i>			
	S0002	C	Sweatwrap, Corridor, Location 1005 <i>a) ND b) ND</i>			

APPENDIX II
Location List

Client: Hamilton-Wentworth Catholic District Sch
Building Name: St Charles - Centre Campus
Survey Date: 2018-08-02

Site: 45 Young Street, Hamilton, ON
Last Re-Assessment: 2022-05-30

Location No.	Name or Description	Area ft ²	Floor No.	Bldg. Phase	Notes
1	Presumed ACM	0		A	
1001	Classroom 6, room no. 6	0	1	A	
1002	Classroom 3, room no. 3	0	1	A	
1003	ESL	0	1	A	
1004	Childminding	0	1	A	
1005	Corridor	0	1	A	
1006	Boiler Room	0	1	A	
1007	Mens Washroom	0	1	A	
1008	Womens Washroom	0	1	A	
1009	Office	0	1	A	
1010	Custodian Closet	0	1	A	
1011	Stairwell	0	1	A	
1012	Washroom	0	1	A	
1013	Corridor	0	1	A	
1014	Gym Offices	0	1	A	
1015	Stairway Crawlspace	0	1	A	
2000	Stairwell	0	2	A	
2001	Fan Room	0	2	A	
2002	Caretaker Room	0	2	A	
2003	Staff Room	0	2	A	
2004	Staff Washroom	0	2	A	
2005	Photo Room	0	2	A	
2006	Womens Washroom	0	2	A	
2007	Corridor	0	2	A	
2008	Mens Washroom	0	2	A	
2009	Classroom 8, room no. 8	0	2	A	
2010	Classroom 7, room no. 7	0	2	A	
2011	Classroom 6, room no. 6	0	2	A	
2012	Classroom 5, room no. 5	0	2	A	
2013	Stairwell	0	2	A	
2014	Assessment Room	0	2	A	
2015	Mens Washroom	0	2	A	
2016	Womens Washroom	0	2	A	
2017	Office	0	2	A	
2018	Custodian Room	0	2	A	

APPENDIX III

Hazardous Materials Summary / Sample Log Report

HAZARDOUS MATERIALS SUMMARY / SAMPLE LOG

Client: Hamilton-Wentworth Catholic District Sch

Site: 45 Young Street, Hamilton, ON

Building Name: St Charles - Centre Campus

Survey Date: 2018-08-02

HAZMAT	Sample No	System/Component/Material/Sample Description	Locations	Bldg. Phase	LF	SF	EA	%	Type	Positive	Friability
Asbestos	S0001 ABC	Piping, Other, Piping Debris Parging Cement	1005,1007,1008	A	0	1	103	0	Chrysotile	Yes	F
Asbestos	S0002 ABC	Piping Sweatwrap	1005	A	100	0	0	0	None Detected	No	
Asbestos	V9500	Floor Adhesive/mastic Vinyl Baseboards	1	A	0	0	0	100	Presumed Asbestos	Yes	NF
Asbestos	V9500	Floor Mastic	1002,1003,1004,1010,1013,1014,2002,2003,2004 2006,2008,2010,2011,2012	A	0	0	0	100	Presumed Asbestos	Yes	NF
Asbestos	V9500	Floor Vinyl Floor Tile (no Mastic) 12x12 Beige W Tan Streaks, 12x12 Brown W Green Fleck, 12x12 Green W Cream Fleck, 12x12 Green W White Fleck, 12x12 White W Black Fleck, 9x9 Yellow	1013,1014,2002,2006,2008,2010,2011,2012	A	0	0	0	100	Presumed Asbestos	Yes	NF
Asbestos	V9500	Other Door, Window Caulking Perimeter	1	A	0	0	0	100	Presumed Asbestos	Yes	NF
Asbestos	V9500	Other Electrical Equipment Cement Product Transite Components Electrical And Switchgear Equipment	1	A	0	0	0	100	Presumed Asbestos	Yes	NF
Asbestos	V9500	Other Electrical Wire Textile Woven Jacketing And Insulation On Older Wiring	1	A	0	0	0	100	Presumed Asbestos	Yes	NF
Asbestos	V9500	Structure Roof Roofing Material	1	A	0	0	0	100	Presumed Asbestos	Yes	NF
Asbestos	V9500	Wall Interior Vermiculite/concrete Block Walls	1	A	0	0	0	100	Presumed Asbestos	Yes	F
Asbestos	V0000	Ceiling Acoustic Tile Ceiling Tiles (lay-in) 2x4 Fiberglass	2003,2004,2006,2007,2008	A	0	0	0	0	Non Asbestos	No	
Asbestos	V0000	Ceiling Acoustic Tile Ceiling Tiles (lay-in) 2x4 Short Fissure Random Pinhole (date Stamped 2003)	1005,1007,1008,1012,1013,2015,2016	A	0	0	0	100	Non Asbestos	No	
Asbestos	V0000	Ceiling Concrete (precast)	1003,1004,1006,1009,1010,1011,1014,1015,2000 2001,2005,2009,2010,2011,2012,2013,2014,2017 2018	A	0	0	0	0	Non Asbestos	No	
Asbestos	V0000	Ceiling Masonry	1001,1002,2002	A	0	0	0	0	Non Asbestos	No	
Asbestos	V0000	Ceiling Acoustic Tile Tectum Panels	1005	A	0	0	0	0	Non Asbestos	No	
Asbestos	V0000	Floor Carpet	1001,1009,1014,2005,2009,2014,2017	A	0	0	0	0	Non Asbestos	No	
Asbestos	V0000	Floor Concrete (poured)	1006,1015,2001	A	0	0	0	0	Non Asbestos	No	
Asbestos	V0000	Floor Laminate	2003	A	0	0	0	0	Non Asbestos	No	

HAZMAT	Sample No	System/Component/Material/Sample Description	Locations	Bldg. Phase	LF	SF	EA	%	Type	Positive	Friability
Asbestos	V0000	Floor Terrazzo	1005,1007,1008,1011,1012,1013,2000,2007,2013 2015,2016,2018	A	0	0	0	0	Non Asbestos	No	
Asbestos	V0000	Floor Vinyl Floor Tile (no Mastic) 12x12 Grey Dense Fleck (installed 2014?)	1003	A	0	0	0	0	Non Asbestos	No	
Asbestos	V0000	Floor Vinyl Floor Tile (no Mastic) 12x12 Grey Dense Fleck (installed 2014)	1002	A	0	0	0	100	Non Asbestos	No	
Asbestos	V0000	Piping Fibreglass	1014,2000,2013	A	0	0	0	0	Non Asbestos	No	
Asbestos	V0000	Wall Masonry	1001,1002,1003,1004,1005,1006,1007,1008,1009 1010,1011,1012,1013,1014,1015,2000,2001,2002 2003,2004,2005,2006,2007,2008,2009,2010,2011 2012,2013,2014,2015,2016,2017,2018	A	0	0	0	0	Non Asbestos	No	

Legend:

Sample number	
S####	Asbestos sample collected
L####	Paint sample collected
P####	PCB sample collected
M####	Mould sample collected
V####	Material visually similar to numbered sample collected
V0000	Known non Hazardous Material
V9000	Material is visually identified as Hazardous Material
V9500	Material is presumed to be Hazardous Material
[Loc. No.]	Abated Material

Units	
SF	Square feet
LF	Linear feet
EA	Each
%	Percentage

NF	Non Friable material.
F	Friable material
PF	Potentially Friable material

APPENDIX IV
All Data Report

ALL DATA REPORT

Client: Hamilton-Wentworth Catholic District Sch
Location: #1 : Presumed ACM
Survey Date: 2018-08-02

Site: Adult
Floor:

Building Name: St Charles - Centre Campus
Room #:
Last Re-Assessment: 2022-05-30

Area (sqft): 0

ASBESTOS																
System	Component	Material	Item	Covering	A*	V*	AP*	Good	Fair	Poor	Unit	Sample	Asbestos Type	Amount	Hazard	Friable
Floor		Adhesive/mastic, vinyl baseboards			A	Y		100(7)			%	V9500	Presumed Asbestos		Presumed Asbestos	NF
Other	Door	Caulking, Perimeter			A	Y		100(7)			%	V9500	Presumed Asbestos		Presumed Asbestos	NF
Other	Electrical Equipment	Cement Product, Transite components electrical and switchgear equipment			B	N		100(7)			%	V9500	Presumed Asbestos		Presumed Asbestos	NF
Other	Electrical Wire	Textile, Woven jacketing and insulation on older wiring			B	N		100(7)			%	V9500	Presumed Asbestos		Presumed Asbestos	NF
Other	Window	Caulking, Perimeter			A	Y		100(7)			%	V9500	Presumed Asbestos		Presumed Asbestos	NF
Structure	Roof	Roofing material			C	Y		100(7)			%	V9500	Presumed Asbestos		Presumed Asbestos	NF
Wall	Interior	Vermiculite/concrete block walls			D	N		100(7)			%	V9500	Presumed Asbestos		Presumed Asbestos	F

ALL DATA REPORT

Client: Hamilton-Wentworth Catholic District Sch
Location: #1001 : Classroom 6
Survey Date: 2018-08-02

Site: Adult
Floor: 1

Building Name: St Charles - Centre Campus
Room #: 6
Last Re-Assessment: 2022-05-30

Area (sqft): 0

ASBESTOS																
System	Component	Material	Item	Covering	A*	V*	AP*	Good	Fair	Poor	Unit	Sample	Asbestos Type	Amount	Hazard	Friable
Ceiling		Masonry			C	Y						V0000	Non-Asbestos		None	
Floor		Carpet			A	Y						V0000	[None]		[Abated]	
Floor		Vinyl Floor Tile (No Mastic), Wood pattern			A	Y										
Wall		Masonry			A	Y						V0000	Non-Asbestos		None	

Client: Hamilton-Wentworth Catholic District Sch
Location: #1002 : Classroom 3
Survey Date: 2018-08-02

Site: Adult
Floor: 1

Building Name: St Charles - Centre Campus
Room #: 3
Last Re-Assessment: 2022-05-30

Area (sqft): 0

ASBESTOS																
System	Component	Material	Item	Covering	A*	V*	AP*	Good	Fair	Poor	Unit	Sample	Asbestos Type	Amount	Hazard	Friable
Ceiling		Masonry			C	Y						V0000	Non-Asbestos		None	
Floor		Mastic			D	N		100(7)			%	V9500	Presumed Asbestos		Presumed Asbestos	NF
Floor		Vinyl Floor Tile (No Mastic), 12x12 grey dense fleck (installed 2014)			A	Y		100			%	V0000	Non-Asbestos		None	
Wall		Masonry			A	Y						V0000	Non-Asbestos		None	

ALL DATA REPORT

Client: Hamilton-Wentworth Catholic District Sch
Location: #1003 : ESL
Survey Date: 2018-08-02

Site: Adult
Floor: 1

Building Name: St Charles - Centre Campus
Room #:
Last Re-Assessment: 2022-05-30

Area (sqft): 0

ASBESTOS																
System	Component	Material	Item	Covering	A*	V*	AP*	Good	Fair	Poor	Unit	Sample	Asbestos Type	Amount	Hazard	Friable
Ceiling		Concrete (precast)			C	Y						V0000	Non-Asbestos		None	
Floor		Mastic			D	N		100(7)			%	V9500	Presumed Asbestos		Presumed Asbestos	NF
Floor		Vinyl Floor Tile (No Mastic), 12x12 Grey Dense Fleck (installed 2014?)			A	Y						V0000	Non-Asbestos		None	
Wall		Masonry			A	Y						V0000	Non-Asbestos		None	

Client: Hamilton-Wentworth Catholic District Sch
Location: #1004 : Childminding
Survey Date: 2018-08-02

Site: Adult
Floor: 1

Building Name: St Charles - Centre Campus
Room #:
Last Re-Assessment: 2022-05-30

Area (sqft): 0

ASBESTOS																
System	Component	Material	Item	Covering	A*	V*	AP*	Good	Fair	Poor	Unit	Sample	Asbestos Type	Amount	Hazard	Friable
Ceiling		Concrete (precast)			C	Y						V0000	Non-Asbestos		None	
Floor		Mastic			D	N		100(7)			%	V9500	Presumed Asbestos		Presumed Asbestos	NF
Floor		Vinyl Floor Tile (No Mastic), 12x12 White w Green and Beige Streak			A	Y		100			%	V9500	[None]		[Abated]	
Floor		Vinyl Floor Tile (No Mastic), Wood pattern			A	Y										
Wall		Masonry			A	Y						V0000	Non-Asbestos		None	

ALL DATA REPORT

Client: Hamilton-Wentworth Catholic District Sch
Location: #1005 : Corridor
Survey Date: 2018-08-02

Site: Adult
Floor: 1

Building Name: St Charles - Centre Campus
Room #:
Last Re-Assessment: 2022-05-30

Area (sqft): 0

ASBESTOS																
System	Component	Material	Item	Covering	A*	V*	AP*	Good	Fair	Poor	Unit	Sample	Asbestos Type	Amount	Hazard	Friable
Ceiling	Acoustic Tile	Ceiling Tiles (lay-in), 2x4 Short Fissure Random Pinhole (date stamped 2003)			C	Y		100			%	V0000	Non-Asbestos		None	
Ceiling	Acoustic Tile	Tectum, Panels			C	Y						V0000	Non-Asbestos		None	
Floor		Terrazzo			A	Y						V0000	Non-Asbestos		None	
Piping		Parging Cement	Fitting		C	N		5(7)	58(7)		EA	V0001	Chrysotile	50-75%	Confirmed Asbestos	F
Piping		Sweatwrap			C	N		100			LF	S0002ABC	None Detected	N.D.	None	
Wall		Masonry			A	Y						V0000	Non-Asbestos		None	

Client: Hamilton-Wentworth Catholic District Sch
Location: #1006 : Boiler Room
Survey Date: 2018-08-02

Site: Adult
Floor: 1

Building Name: St Charles - Centre Campus
Room #:
Last Re-Assessment: 2022-05-30

Area (sqft): 0

ASBESTOS																
System	Component	Material	Item	Covering	A*	V*	AP*	Good	Fair	Poor	Unit	Sample	Asbestos Type	Amount	Hazard	Friable
Ceiling		Concrete (precast)			C	Y						V0000	Non-Asbestos		None	
Floor		Concrete (poured)			A	Y						V0000	Non-Asbestos		None	
Piping		Abated Material, Removed in 2015	Fitting		C	N									[Abated]	
Wall		Masonry			A	Y						V0000	Non-Asbestos		None	

ALL DATA REPORT

Client: Hamilton-Wentworth Catholic District Sch
Location: #1007 : Mens Washroom
Survey Date: 2018-08-02

Site: Adult
Floor: 1

Building Name: St Charles - Centre Campus
Room #:
Last Re-Assessment: 2022-05-30

Area (sqft): 0

ASBESTOS																
System	Component	Material	Item	Covering	A*	V*	AP*	Good	Fair	Poor	Unit	Sample	Asbestos Type	Amount	Hazard	Friable
Ceiling	Acoustic Tile	Ceiling Tiles (lay-in), 2x4 Short Fissure Random Pinhole (date stamped 2003)			C	Y		100			%	V0000	Non-Asbestos		None	
Floor		Terrazzo			A	Y						V0000	Non-Asbestos		None	
Piping		Parging Cement	Fitting		C	N			24(7)		EA	S0001ABC	Chrysotile	50-75%	Confirmed Asbestos	F
Wall		Masonry			A	Y						V0000	Non-Asbestos		None	

Client: Hamilton-Wentworth Catholic District Sch
Location: #1008 : Womens Washroom
Survey Date: 2018-08-02

Site: Adult
Floor: 1

Building Name: St Charles - Centre Campus
Room #:
Last Re-Assessment: 2022-05-30

Area (sqft): 0

ASBESTOS																
System	Component	Material	Item	Covering	A*	V*	AP*	Good	Fair	Poor	Unit	Sample	Asbestos Type	Amount	Hazard	Friable
Ceiling	Acoustic Tile	Ceiling Tiles (lay-in), 2x4 Short Fissure Random Pinhole (date stamped 2003)			C	Y		100			%	V0000	Non-Asbestos		None	
Floor		Terrazzo			A	Y						V0000	Non-Asbestos		None	
Piping		Parging Cement	Fitting		C	N			15(7)	1(4)	EA	V0001	Chrysotile	50-75%	Confirmed Asbestos	F
Wall		Masonry			A	Y						V0000	Non-Asbestos		None	

ALL DATA REPORT

Client: Hamilton-Wentworth Catholic District Sch
Location: #1009 : Office
Survey Date: 2018-08-02

Site: Adult
Floor: 1

Building Name: St Charles - Centre Campus
Room #:
Last Re-Assessment: 2022-05-30

Area (sqft): 0

ASBESTOS																
System	Component	Material	Item	Covering	A*	V*	AP*	Good	Fair	Poor	Unit	Sample	Asbestos Type	Amount	Hazard	Friable
Ceiling		Concrete (precast)			C	Y						V0000	Non-Asbestos		None	
Floor		Carpet			A	Y						V0000	Non-Asbestos		None	
Wall		Masonry			A	Y						V0000	Non-Asbestos		None	

Client: Hamilton-Wentworth Catholic District Sch
Location: #1010 : Custodian Closet
Survey Date: 2018-08-02

Site: Adult
Floor: 1

Building Name: St Charles - Centre Campus
Room #:
Last Re-Assessment: 2022-05-30

Area (sqft): 0

ASBESTOS																
System	Component	Material	Item	Covering	A*	V*	AP*	Good	Fair	Poor	Unit	Sample	Asbestos Type	Amount	Hazard	Friable
Ceiling		Concrete (precast)			C	Y						V0000	Non-Asbestos		None	
Floor		Mastic			A	Y		100(7)			%	V9500	Presumed Asbestos		Presumed Asbestos	NF
Floor		Abated Material, 12x12 White w Green and Beige Streak													[Abated]	
Piping		Parging Cement	Fitting		C	Y				1	EA	V0001	[None]	50-75%	[Abated]	
Wall		Masonry			A	Y						V0000	Non-Asbestos		None	

ALL DATA REPORT

Client: Hamilton-Wentworth Catholic District Sch
Location: #1011 : Stairwell
Survey Date: 2018-08-02

Site: Adult
Floor: 1

Building Name: St Charles - Centre Campus
Room #:
Last Re-Assessment: 2022-05-30

Area (sqft): 0

ASBESTOS																
System	Component	Material	Item	Covering	A*	V*	AP*	Good	Fair	Poor	Unit	Sample	Asbestos Type	Amount	Hazard	Friable
Ceiling		Concrete (precast)			C	Y						V0000	Non-Asbestos		None	
Floor		Terrazzo			A	Y						V0000	Non-Asbestos		None	
Wall		Masonry			A	Y						V0000	Non-Asbestos		None	

Client: Hamilton-Wentworth Catholic District Sch
Location: #1012 : Washroom
Survey Date: 2018-08-02

Site: Adult
Floor: 1

Building Name: St Charles - Centre Campus
Room #:
Last Re-Assessment: 2022-05-30

Area (sqft): 0

ASBESTOS																
System	Component	Material	Item	Covering	A*	V*	AP*	Good	Fair	Poor	Unit	Sample	Asbestos Type	Amount	Hazard	Friable
Ceiling	Acoustic Tile	Ceiling Tiles (lay-in), 2x4 Short Fissure Random Pinhole (date stamped 2003)			C	Y		100			%	V0000	Non-Asbestos		None	
Floor		Terrazzo			A	Y						V0000	Non-Asbestos		None	
Wall		Masonry			A	Y						V0000	Non-Asbestos		None	

ALL DATA REPORT

Client: Hamilton-Wentworth Catholic District Sch
Location: #1013 : Corridor
Survey Date: 2018-08-02

Site: Adult
Floor: 1

Building Name: St Charles - Centre Campus
Room #:
Last Re-Assessment: 2022-05-30

Area (sqft): 0

ASBESTOS																
System	Component	Material	Item	Covering	A*	V*	AP*	Good	Fair	Poor	Unit	Sample	Asbestos Type	Amount	Hazard	Friable
Ceiling	Acoustic Tile	Ceiling Tiles (lay-in), 2x4 Short Fissure Random Pinhole (date stamped 2003)			C	Y		100			%	V0000	Non-Asbestos		None	
Floor		Terrazzo			A	Y						V0000	Non-Asbestos		None	
Floor		Mastic			D	N		100(7)			%	V9500	Presumed Asbestos		Presumed Asbestos	NF
Floor		Vinyl Floor Tile (No Mastic), 12x12 Green w Cream Fleck			A	Y		100(7)			%	V9500	Presumed Asbestos		Presumed Asbestos	NF
Floor		Vinyl Floor Tile (No Mastic), 12x12 Brown w Green Fleck			A	Y		100(7)			%	V9500	Presumed Asbestos		Presumed Asbestos	NF
Floor		Vinyl Floor Tile (No Mastic), 9x9 yellow			A	Y		100(7)			%	V9500	Presumed Asbestos		Presumed Asbestos	NF
Wall		Masonry			A	Y						V0000	Non-Asbestos		None	

ALL DATA REPORT

Client: Hamilton-Wentworth Catholic District Sch
Location: #1014 : Gym Offices
Survey Date: 2018-08-02

Site: Adult
Floor: 1

Building Name: St Charles - Centre Campus
Room #:
Last Re-Assessment: 2022-05-30

Area (sqft): 0

ASBESTOS																
System	Component	Material	Item	Covering	A*	V*	AP*	Good	Fair	Poor	Unit	Sample	Asbestos Type	Amount	Hazard	Friable
Ceiling		Concrete (precast)			C	Y						V0000	Non-Asbestos		None	
Floor		Carpet			A	Y						V0000	Non-Asbestos		None	
Floor		Mastic			D	N		100(7)			%	V9500	Presumed Asbestos		Presumed Asbestos	NF
Floor		Vinyl Floor Tile (No Mastic), 12x12 Brown w Green Fleck			A	Y		100(7)			%	V9500	Presumed Asbestos		Presumed Asbestos	NF
Floor		Vinyl Floor Tile (No Mastic), 12x12 Green w Cream Fleck			A	Y		100(7)			%	V9500	Presumed Asbestos		Presumed Asbestos	NF
Floor		Vinyl Floor Tile (No Mastic), 9x9 yellow			A	Y		100(7)			%	V9500	Presumed Asbestos		Presumed Asbestos	NF
Piping		Fibreglass	Insulation	Polyvinyl chloride (PVC)	C	Y						V0000	Non-Asbestos		None	
Wall		Masonry			A	Y						V0000	Non-Asbestos		None	

ALL DATA REPORT

Client: Hamilton-Wentworth Catholic District Sch
Location: #1015 : Stairway Crawlspace
Survey Date: 2018-08-02

Site: Adult
Floor: 1

Building Name: St Charles - Centre Campus
Room #:
Last Re-Assessment: 2022-05-30

Area (sqft): 0

ASBESTOS																
System	Component	Material	Item	Covering	A*	V*	AP*	Good	Fair	Poor	Unit	Sample	Asbestos Type	Amount	Hazard	Friable
Ceiling		Concrete (precast)			C	Y						V0000	Non-Asbestos		None	
Floor		Concrete (poured)			A	Y						V0000	Non-Asbestos		None	
Wall		Masonry			A	Y						V0000	Non-Asbestos		None	

Client: Hamilton-Wentworth Catholic District Sch
Location: #2000 : Stairwell
Survey Date: 2018-08-02

Site: Adult
Floor: 2

Building Name: St Charles - Centre Campus
Room #:
Last Re-Assessment: 2022-05-30

Area (sqft): 0

ASBESTOS																
System	Component	Material	Item	Covering	A*	V*	AP*	Good	Fair	Poor	Unit	Sample	Asbestos Type	Amount	Hazard	Friable
Ceiling		Concrete (precast)			C	Y		Good	Fair	Poor		V0000	Non-Asbestos		None	
Floor		Terrazzo			A	Y						V0000	Non-Asbestos		None	
Piping		Fibreglass	Insulation		C	Y						V0000	Non-Asbestos		None	
Wall		Masonry			A	Y						V0000	Non-Asbestos		None	

ALL DATA REPORT

Client: Hamilton-Wentworth Catholic District Sch
Location: #2001 : Fan Room
Survey Date: 2018-08-02

Site: Adult
Floor: 2

Building Name: St Charles - Centre Campus
Room #:
Last Re-Assessment: 2022-05-30

Area (sqft): 0

ASBESTOS																
System	Component	Material	Item	Covering	A*	V*	AP*	Good	Fair	Poor	Unit	Sample	Asbestos Type	Amount	Hazard	Friable
Ceiling		Concrete (precast)			C	Y						V0000	Non-Asbestos		None	
Floor		Concrete (poured)			A	Y						V0000	Non-Asbestos		None	
Wall		Masonry			A	Y						V0000	Non-Asbestos		None	

Client: Hamilton-Wentworth Catholic District Sch
Location: #2002 : Caretaker Room
Survey Date: 2018-08-02

Site: Adult
Floor: 2

Building Name: St Charles - Centre Campus
Room #:
Last Re-Assessment: 2022-05-30

Area (sqft): 0

ASBESTOS																
System	Component	Material	Item	Covering	A*	V*	AP*	Good	Fair	Poor	Unit	Sample	Asbestos Type	Amount	Hazard	Friable
Ceiling		Masonry			C	Y						V0000	Non-Asbestos		None	
Floor		Mastic			D	N		100(7)			%	V9500	Presumed Asbestos		Presumed Asbestos	NF
Floor		Vinyl Floor Tile (No Mastic), 12x12 White w Black Fleck			A	Y		100(7)			%	V9500	Presumed Asbestos		Presumed Asbestos	NF
Wall		Masonry			A	Y						V0000	Non-Asbestos		None	

ALL DATA REPORT

Client: Hamilton-Wentworth Catholic District Sch
Location: #2003 : Staff Room
Survey Date: 2018-08-02

Site: Adult
Floor: 2

Building Name: St Charles - Centre Campus
Room #:
Last Re-Assessment: 2022-05-30

Area (sqft): 0

ASBESTOS																
System	Component	Material	Item	Covering	A*	V*	AP*	Good	Fair	Poor	Unit	Sample	Asbestos Type	Amount	Hazard	Friable
Ceiling	Acoustic Tile	Ceiling Tiles (lay-in), 2x4 Fiberglass			C	Y						V0000	Non-Asbestos		None	
Floor		Laminate			A	Y						V0000	Non-Asbestos		None	
Floor		Mastic			D	N		100(7)			%	V9500	Presumed Asbestos		Presumed Asbestos	NF
Wall		Masonry			A	Y						V0000	Non-Asbestos		None	

Client: Hamilton-Wentworth Catholic District Sch
Location: #2004 : Staff Washroom
Survey Date: 2018-08-02

Site: Adult
Floor: 2

Building Name: St Charles - Centre Campus
Room #:
Last Re-Assessment: 2022-05-30

Area (sqft): 0

ASBESTOS																
System	Component	Material	Item	Covering	A*	V*	AP*	Good	Fair	Poor	Unit	Sample	Asbestos Type	Amount	Hazard	Friable
Ceiling	Acoustic Tile	Ceiling Tiles (lay-in), 2x4 Fiberglass			C	Y						V0000	Non-Asbestos		None	
Floor		Mastic			D	N		100(7)			%	V9500	Presumed Asbestos		Presumed Asbestos	NF
Floor		Vinyl Floor Tile (No Mastic), 12x12 White w Black Fleck			A	Y		100			%	V9500	[None]		[Abated]	
Floor		Vinyl Floor Tile (No Mastic), Wood pattern			A	Y										
Wall		Masonry			A	Y						V0000	Non-Asbestos		None	

ALL DATA REPORT

Client: Hamilton-Wentworth Catholic District Sch
Location: #2005 : Photo Room
Survey Date: 2018-08-02

Site: Adult
Floor: 2

Building Name: St Charles - Centre Campus
Room #:
Last Re-Assessment: 2022-05-30

Area (sqft): 0

ASBESTOS																
System	Component	Material	Item	Covering	A*	V*	AP*	Good	Fair	Poor	Unit	Sample	Asbestos Type	Amount	Hazard	Friable
Ceiling		Concrete (precast)			C	Y						V0000	Non-Asbestos		None	
Floor		Carpet			A	Y						V0000	Non-Asbestos		None	
Wall		Masonry			A	Y						V0000	Non-Asbestos		None	

Client: Hamilton-Wentworth Catholic District Sch
Location: #2006 : Womens Washroom
Survey Date: 2018-08-02

Site: Adult
Floor: 2

Building Name: St Charles - Centre Campus
Room #:
Last Re-Assessment: 2022-05-30

Area (sqft): 0

ASBESTOS																
System	Component	Material	Item	Covering	A*	V*	AP*	Good	Fair	Poor	Unit	Sample	Asbestos Type	Amount	Hazard	Friable
Ceiling	Acoustic Tile	Ceiling Tiles (lay-in), 2x4 Fiberglass			C	Y						V0000	Non-Asbestos		None	
Floor		Mastic			D	N		100(7)			%	V9500	Presumed Asbestos		Presumed Asbestos	NF
Floor		Vinyl Floor Tile (No Mastic), 12x12 White w Black Fleck			A	Y		100(7)			%	V9500	Presumed Asbestos		Presumed Asbestos	NF
Wall		Masonry			A	Y						V0000	Non-Asbestos		None	

ALL DATA REPORT

Client: Hamilton-Wentworth Catholic District Sch
Location: #2007 : Corridor
Survey Date: 2018-08-02

Site: Adult
Floor: 2

Building Name: St Charles - Centre Campus
Room #:
Last Re-Assessment: 2022-05-30

Area (sqft): 0

ASBESTOS																
System	Component	Material	Item	Covering	A*	V*	AP*	Good	Fair	Poor	Unit	Sample	Asbestos Type	Amount	Hazard	Friable
Ceiling	Acoustic Tile	Ceiling Tiles (lay-in), 2x4 Fiberglass			C	Y						V0000	Non-Asbestos		None	
Floor		Terrazzo			A	Y						V0000	Non-Asbestos		None	
Wall		Masonry			A	Y						V0000	Non-Asbestos		None	

Client: Hamilton-Wentworth Catholic District Sch
Location: #2008 : Mens Washroom
Survey Date: 2018-08-02

Site: Adult
Floor: 2

Building Name: St Charles - Centre Campus
Room #:
Last Re-Assessment: 2022-05-30

Area (sqft): 0

ASBESTOS																
System	Component	Material	Item	Covering	A*	V*	AP*	Good	Fair	Poor	Unit	Sample	Asbestos Type	Amount	Hazard	Friable
Ceiling	Acoustic Tile	Ceiling Tiles (lay-in), 2x4 Fiberglass			C	Y						V0000	Non-Asbestos		None	
Floor		Mastic			D	N		100(7)			%	V9500	Presumed Asbestos		Presumed Asbestos	NF
Floor		Vinyl Floor Tile (No Mastic), 12x12 White w Black Fleck			A	Y		100(7)			%	V9500	Presumed Asbestos		Presumed Asbestos	NF
Wall		Masonry			A	Y						V0000	Non-Asbestos		None	

ALL DATA REPORT

Client: Hamilton-Wentworth Catholic District Sch
Location: #2009 : Classroom 8
Survey Date: 2018-08-02

Site: Adult
Floor: 2

Building Name: St Charles - Centre Campus
Room #: 8
Last Re-Assessment: 2022-05-30

Area (sqft): 0

ASBESTOS																
System	Component	Material	Item	Covering	A*	V*	AP*	Good	Fair	Poor	Unit	Sample	Asbestos Type	Amount	Hazard	Friable
Ceiling		Concrete (precast)			C	Y						V0000	Non-Asbestos		None	
Floor		Carpet			A	Y						V0000	Non-Asbestos		None	
Wall		Masonry			A	Y						V0000	Non-Asbestos		None	

Client: Hamilton-Wentworth Catholic District Sch
Location: #2010 : Classroom 7
Survey Date: 2018-08-02

Site: Adult
Floor: 2

Building Name: St Charles - Centre Campus
Room #: 7
Last Re-Assessment: 2022-05-30

Area (sqft): 0

ASBESTOS																
System	Component	Material	Item	Covering	A*	V*	AP*	Good	Fair	Poor	Unit	Sample	Asbestos Type	Amount	Hazard	Friable
Ceiling		Concrete (precast)			C	Y						V0000	Non-Asbestos		None	
Floor		Mastic			D	N		100(7)			%	V9500	Presumed Asbestos		Presumed Asbestos	NF
Floor		Vinyl Floor Tile (No Mastic), 12x12 Beige w Tan Streaks			A	Y		100(7)			%	V9500	Presumed Asbestos		Presumed Asbestos	NF
Wall		Masonry			A	Y						V0000	Non-Asbestos		None	

ALL DATA REPORT

Client: Hamilton-Wentworth Catholic District Sch
Location: #2011 : Classroom 6
Survey Date: 2018-08-02

Site: Adult
Floor: 2

Building Name: St Charles - Centre Campus
Room #: 6
Last Re-Assessment: 2022-05-30

Area (sqft): 0

ASBESTOS																
System	Component	Material	Item	Covering	A*	V*	AP*	Good	Fair	Poor	Unit	Sample	Asbestos Type	Amount	Hazard	Friable
Ceiling		Concrete (precast)			C	Y						V0000	Non-Asbestos		None	
Floor		Mastic			D	N		100(7)			%	V9500	Presumed Asbestos		Presumed Asbestos	NF
Floor		Vinyl Floor Tile (No Mastic), 12x12 Beige w Tan Streaks			A	Y		100(7)			%	V9500	Presumed Asbestos		Presumed Asbestos	NF
Wall		Masonry			A	Y						V0000	Non-Asbestos		None	

Client: Hamilton-Wentworth Catholic District Sch
Location: #2012 : Classroom 5
Survey Date: 2018-08-02

Site: Adult
Floor: 2

Building Name: St Charles - Centre Campus
Room #: 5
Last Re-Assessment: 2022-05-30

Area (sqft): 0

ASBESTOS																
System	Component	Material	Item	Covering	A*	V*	AP*	Good	Fair	Poor	Unit	Sample	Asbestos Type	Amount	Hazard	Friable
Ceiling		Concrete (precast)			C	Y						V0000	Non-Asbestos		None	
Floor		Mastic			D	N		100(7)			%	V9500	Presumed Asbestos		Presumed Asbestos	NF
Floor		Vinyl Floor Tile (No Mastic), 12x12 Green w White Fleck			A	Y		100(7)			%	V9500	Presumed Asbestos		Presumed Asbestos	NF
Wall		Masonry			A	Y						V0000	Non-Asbestos		None	

ALL DATA REPORT

Client: Hamilton-Wentworth Catholic District Sch
Location: #2013 : Stairwell
Survey Date: 2018-08-02

Site: Adult
Floor: 2

Building Name: St Charles - Centre Campus
Room #:
Last Re-Assessment: 2022-05-30

Area (sqft): 0

ASBESTOS																
System	Component	Material	Item	Covering	A*	V*	AP*	Good	Fair	Poor	Unit	Sample	Asbestos Type	Amount	Hazard	Friable
Ceiling		Concrete (precast)			C	Y						V0000	Non-Asbestos		None	
Floor		Terrazzo			A	Y						V0000	Non-Asbestos		None	
Piping		Fibreglass	Insulation		C	Y						V0000	Non-Asbestos		None	
Wall		Masonry			A	Y						V0000	Non-Asbestos		None	

Client: Hamilton-Wentworth Catholic District Sch
Location: #2014 : Assessment Room
Survey Date: 2018-08-02

Site: Adult
Floor: 2

Building Name: St Charles - Centre Campus
Room #:
Last Re-Assessment: 2022-05-30

Area (sqft): 0

ASBESTOS																
System	Component	Material	Item	Covering	A*	V*	AP*	Good	Fair	Poor	Unit	Sample	Asbestos Type	Amount	Hazard	Friable
Ceiling		Concrete (precast)			C	Y						V0000	Non-Asbestos		None	
Floor		Carpet			A	Y						V0000	Non-Asbestos		None	
Wall		Masonry			A	Y						V0000	Non-Asbestos		None	

ALL DATA REPORT

Client: Hamilton-Wentworth Catholic District Sch
Location: #2015 : Mens Washroom
Survey Date: 2018-08-02

Site: Adult
Floor: 2

Building Name: St Charles - Centre Campus
Room #:
Last Re-Assessment: 2022-05-30

Area (sqft): 0

ASBESTOS																
System	Component	Material	Item	Covering	A*	V*	AP*	Good	Fair	Poor	Unit	Sample	Asbestos Type	Amount	Hazard	Friable
Ceiling	Acoustic Tile	Ceiling Tiles (lay-in), 2x4 Short Fissure Random Pinhole (date stamped 2003)			C	Y		100			%	V0000	Non-Asbestos		None	
Floor		Terrazzo			A	Y						V0000	Non-Asbestos		None	
Wall		Masonry			A	Y						V0000	Non-Asbestos		None	

Client: Hamilton-Wentworth Catholic District Sch
Location: #2016 : Womens Washroom
Survey Date: 2018-08-02

Site: Adult
Floor: 2

Building Name: St Charles - Centre Campus
Room #:
Last Re-Assessment: 2022-05-30

Area (sqft): 0

ASBESTOS																
System	Component	Material	Item	Covering	A*	V*	AP*	Good	Fair	Poor	Unit	Sample	Asbestos Type	Amount	Hazard	Friable
Ceiling	Acoustic Tile	Ceiling Tiles (lay-in), 2x4 Short Fissure Random Pinhole (date stamped 2003)			C	Y		100			%	V0000	Non-Asbestos		None	
Floor		Terrazzo			A	Y						V0000	Non-Asbestos		None	
Wall		Masonry			A	Y						V0000	Non-Asbestos		None	

ALL DATA REPORT

Client: Hamilton-Wentworth Catholic District Sch
Location: #2017 : Office
Survey Date: 2018-08-02

Site: Adult
Floor: 2

Building Name: St Charles - Centre Campus
Room #:
Last Re-Assessment: 2022-05-30

Area (sqft): 0

ASBESTOS																
System	Component	Material	Item	Covering	A*	V*	AP*	Good	Fair	Poor	Unit	Sample	Asbestos Type	Amount	Hazard	Friable
Ceiling		Concrete (precast)			C	Y						V0000	Non-Asbestos		None	
Floor		Carpet			A	Y						V0000	Non-Asbestos		None	
Wall		Masonry			A	Y						V0000	Non-Asbestos		None	

Client: Hamilton-Wentworth Catholic District Sch
Location: #2018 : Custodian Room
Survey Date: 2018-08-02

Site: Adult
Floor: 2

Building Name: St Charles - Centre Campus
Room #:
Last Re-Assessment: 2022-05-30

Area (sqft): 0

ASBESTOS																
System	Component	Material	Item	Covering	A*	V*	AP*	Good	Fair	Poor	Unit	Sample	Asbestos Type	Amount	Hazard	Friable
Ceiling		Concrete (precast)			C	Y						V0000	Non-Asbestos		None	
Floor		Terrazzo			A	Y						V0000	Non-Asbestos		None	
Wall		Masonry			A	Y						V0000	Non-Asbestos		None	

Legend:



Sample number		Units		Other	
S####	Asbestos sample collected	SF	Square feet	A	Access
V####	Material visually similar to numbered sample collected	LF	Linear feet	V	Visible
V0000	Known non-asbestos material	EA	Each	AP	Air Plenum
V9000	Visually identified as an asbestos material	%	Percentage	F	Friable material
V9500	Material is presumed to be an asbestos material			NF	Non Friable material
				PF	Potentially Friable material

Access	
A	Accessible to all building occupants
B	Accessible to maintenance and operations staff without a ladder
C	Accessible to maintenance and operations staff with a ladder. Also rarely entered, locked areas
D	Not normally accessible

Condition	
Good	No visible damage or deterioration
Fair	Minor, repairable damage, cracking, delamination or deterioration
Poor	Irreparable damage or deterioration with exposed and missing material

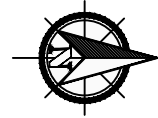
Visible	
Y	The material is visible when standing on the floor of the room, without the removal or opening of other building components (e.g. ceiling tiles or access panels).
N	The material is not visible to view when standing on the floor of the room and requires the removal of a building component (e.g. ceilings tiles or access panels) to view and access. Includes rarely entered crawlspaces, attic spaces, etc. Observations will be limited to the extent visible from the access points.

Air Plenum	
Yes or No	The material is in a return air plenum or in a direct airstream or there is evidence of air erosion (e.g. duct for heating or cooling blowing directly on or across an ACM). This field is only completed where Air Plenum consideration is required by regulation.

Colour Coding	
	The material is known to contain regulated concentrations of asbestos; either by analytical results or visible identification (use of the V9000 code).
	The material is presumed to contain asbestos; based on visual appearances; typically a material known to historically contain asbestos; however, not sampled due to limited access or the destructive nature of the sampling.

Action					
(1)	Clean up of ACM Debris	(2)	Precautions for Access Which may Disturb ACM Debris	(3)	ACM removal
(4)	Precautions for Work Which may Disturb ACM in Poor Condition	(5)	Proactive ACM removal (Minimum repair required for fair condition)	(6)	ACM repair
(7)	Management program and surveillance				

APPENDIX V
Drawings



905-577-6206

www.pinchin.com

LEGEND:

(X) LOCATION NUMBER

◎ ASBESTOS BULK SAMPLE

ASBESTOS-CONTAINING MATERIALS:

[P] PIPE INSULATION

[Light Blue Box] VINYL FLOOR TILES AND MASTIC

[Olive Green Box] MASTIC

NOT ALL KNOWN OR SUSPECTED ASBESTOS BUILDING MATERIALS MAY BE DEPICTED ON THE DRAWING. REFER TO THE ASBESTOS REASSESSMENT REPORT FOR A COMPLETE LIST OF KNOWN AND SUSPECTED ASBESTOS BUILDING MATERIALS.

LEGEND IS COLOUR DEPENDENT. NON-COLOUR COPIES MAY ALTER INTERPRETATION.

CLIENT:



LOCATION:

ST. CHARLES CENTRE
45 YOUNG STREET
HAMILTON, ONTARIO

TITLE:

ASBESTOS REASSESSMENT
FLOOR LEVEL 1

DATE:

AUGUST 2022

PROJECT # :

303992.004

DRAWN BY:

EB

CHECKED BY:

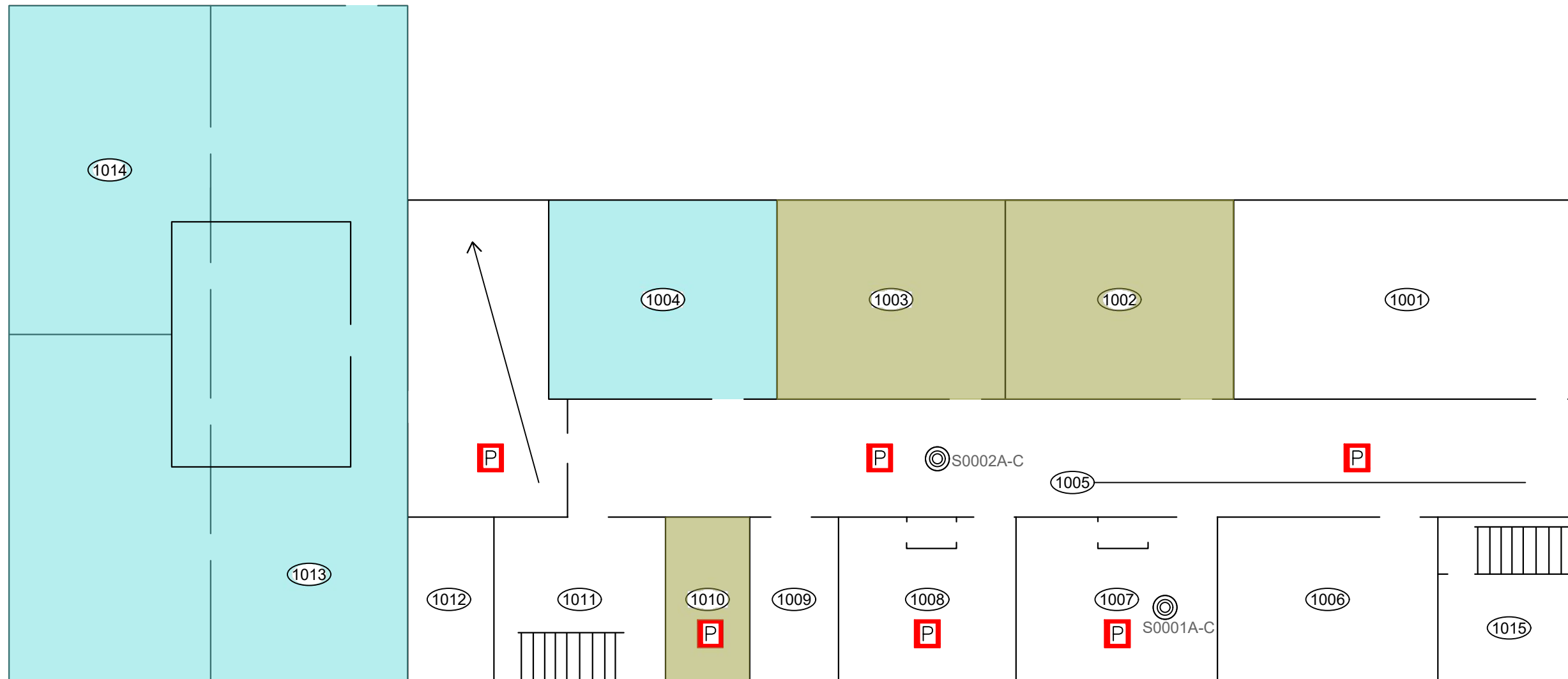
EB

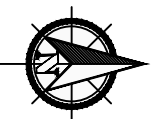
SCALE:

NTS

DRAWING:

1 OF 2





905-577-6206 www.pinchin.com

- LEGEND:
- LOCATION NUMBER
 - ASBESTOS BULK SAMPLE

ASBESTOS-CONTAINING MATERIALS:

- PIPE INSULATION
- VINYL FLOOR TILES AND MASTIC
- MASTIC

NOT ALL KNOWN OR SUSPECTED ASBESTOS BUILDING MATERIALS MAY BE DEPICTED ON THE DRAWING. REFER TO THE ASBESTOS REASSESSMENT REPORT FOR A COMPLETE LIST OF KNOWN AND SUSPECTED ASBESTOS BUILDING MATERIALS.

LEGEND IS COLOUR DEPENDENT.
NON-COLOUR COPIES MAY ALTER
INTERPRETATION.

CLIENT:



LOCATION:
ST. CHARLES CENTRE
45 YOUNG STREET
HAMILTON, ONTARIO

TITLE:

ASBESTOS REASSESSMENT
FLOOR LEVEL 2

DATE: AUGUST 2022	PROJECT # : 303992.004
DRAWN BY: EB	2 OF 2
CHECKED BY: EB	
SCALE: NTS	

