



# Asbestos Reassessment

Our Lady of Lourdes  
420 Mohawk Road East,  
Hamilton, Ontario

Prepared for:

**Hamilton-Wentworth Catholic  
District School Board**

90 Mulberry Street  
Hamilton, Ontario, L8N 3R9

August 23, 2022

Pinchin File: 303992.004

**Asbestos Reassessment**

Our Lady of Lourdes, 420 Mohawk Road East, Hamilton, Ontario  
Hamilton-Wentworth Catholic District School Board

August 23, 2022  
Pinchin File: 303992.004



Hamilton-Wentworth  
Catholic District School Board  
*Believing. Achieving. Serving*

**Issued to:** Hamilton-Wentworth Catholic District  
School Board

**Issued on:** August 23, 2022

**Pinchin File:** 303992.004

**Issuing Office:** Hamilton, ON

**Pinchin Contact:** Emily Balfour, Project Manager  
365.889.5147  
[ebalfour@pinchin.com](mailto:ebalfour@pinchin.com)

---

Author:

---

Emily Balfour  
Project Manager  
365.889.5147  
[ebalfour@pinchin.com](mailto:ebalfour@pinchin.com)

Reviewer:

---

Damian Palus, C.E.T.  
Operations Manager  
289.678.0694  
[dpalus@pinchin.com](mailto:dpalus@pinchin.com)



## **EXECUTIVE SUMMARY**

Hamilton-Wentworth Catholic District School Board (Client) retained Pinchin Ltd. (Pinchin) to conduct an asbestos building materials reassessment at the subject building.

The objective of the reassessment was to evaluate the condition and quantity of previously reported asbestos-containing materials (ACM), and develop corrective action plans as required for the purposes of long-term management. The results of this reassessment are not intended for construction, renovation, demolition or project tendering purposes.

### **Summary of Recommendations**

The following is a summary of significant recommendations; refer to the body of the report for detailed recommendations:

- Perform a reassessment of asbestos materials on an annual basis.
- Perform a pre-construction assessment and remove all asbestos-containing materials (ACM) prior to alteration or maintenance work if ACM may be disturbed by the work.
- Follow appropriate safe work procedures when handling or disturbing asbestos.
- Sample any presumed ACM prior to alteration or maintenance work if presumed ACM may be disturbed by the work.

*This Executive Summary is subject to the same standard limitations as contained in the report and must be read in conjunction with the entire report.*



## Asbestos Reassessment

Our Lady of Lourdes, 420 Mohawk Road East, Hamilton, Ontario  
Hamilton-Wentworth Catholic District School Board

August 23, 2022  
Pinchin File: 303992.004

### TABLE OF CONTENTS

1.0	INTRODUCTION AND SCOPE .....	1
1.1	Scope of Assessment .....	1
2.0	BACKGROUND INFORMATION .....	1
2.1	Building Year of Construction and Additions .....	1
2.2	Existing Reports .....	1
3.0	FINDINGS .....	2
3.1	Excluded Materials .....	2
3.2	Confirmed/Presumed Asbestos-Containing Materials and Confirmed Non-Asbestos Materials .....	3
4.0	RECOMMENDATIONS .....	8
4.1	General .....	8
4.2	Remedial Work .....	8
4.3	On-going Management and Maintenance .....	9
5.0	TERMS AND LIMITATIONS .....	9
6.0	REFERENCES .....	9

### APPENDICES

APPENDIX I	Asbestos Analytical Certificates
APPENDIX II	Location List
APPENDIX III	Summary Report
APPENDIX IV	All Data Report
APPENDIX V	Drawings



## Asbestos Reassessment

Our Lady of Lourdes, 420 Mohawk Road East, Hamilton, Ontario  
Hamilton-Wentworth Catholic District School Board

August 23, 2022  
Pinchin File: 303992.004

## 1.0 INTRODUCTION AND SCOPE

Hamilton-Wentworth Catholic District School Board (Client) retained Pinchin Ltd. (Pinchin) to conduct an asbestos building materials reassessment at Our Lady of Lourdes located at 420 Mohawk Road East, Hamilton, Ontario.

The reassessment was performed by Matthew Pitman, Project Technologist on May 11, 2022.

The objectives of the reassessment were to document the locations, quantities and conditions of previously identified asbestos-containing building materials and develop corrective action plans as required. This reassessment is only to be used for the purposes of long-term management and routine maintenance. The results of this reassessment are not to be used for construction, renovation, demolition or project tendering purposes.

### 1.1 Scope of Assessment

The objective of the reassessment was to evaluate the condition and quantity of previously reported asbestos-containing materials (ACM), and develop corrective action plans as required.

Refer to the Asbestos Building Materials Reassessment Methodology report and Annex A dated 2022, Pinchin File 303992.004, for the methodology used during the reassessment.

## 2.0 BACKGROUND INFORMATION

### 2.1 Building Year of Construction and Additions

Item	Details
Year of Construction	1957
Year(s) of Additions	1958, 1959, 1962, 1964, 1965, 2000

### 2.2 Existing Reports

#### 2.2.1 Review of Previous Reports

Pinchin previously prepared the following report, which has been reviewed and relied upon as part of this assessment:

- Asbestos Reassessment, Our Lady of Lourdes, 420 Mohawk Road East, Hamilton, Ontario, June 2020, Prepared by Pinchin Ltd., Pinchin File: 272113.
- Asbestos Reassessment, Our Lady of Lourdes, 420 Mohawk Road East, Hamilton, Ontario, June 2021, Prepared by Pinchin Ltd., Pinchin File: 286533.001.



### 3.0 FINDINGS

The following section summarizes the findings of the reassessment and provides a general description of the asbestos materials identified. For details on quantities, assessment, sample numbers, friability, condition, and locations of asbestos materials; refer to the Summary Report and All Data Report in Appendices III and IV.

Previous analytical sample results have been relied upon and were included in the original asbestos assessment report completed by MTE Consultants Inc. Additional samples results where collected by Pinchin have been included in Appendix I.


#### 3.1 Excluded Materials

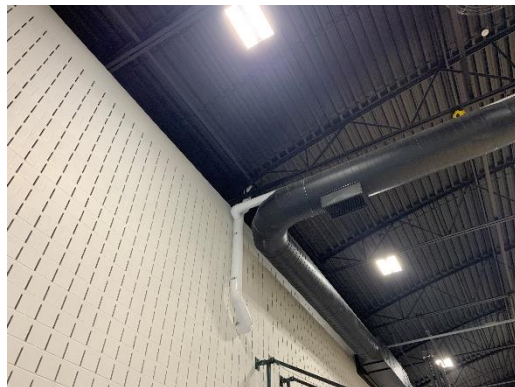


A number of materials which might contain asbestos were not sampled during this reassessment due to limitations in scope and methodology. Where present, these materials are assumed to contain asbestos until otherwise proven by sampling and analysis. These materials are not shown on the drawings in Appendix V. Excluded materials presumed to contain asbestos include:

Material	Friability
Roofing, felts and tar	Non-friable
Electrical components or wiring within control centers, breakers, motors or lights, insulation on wiring	Non-friable
Vermiculite in concrete block wall cavities	Friable
Adhesives and duct mastics	Non-friable
Caulking	Non-friable
Fibre reinforced paints and coatings	Non-friable
Paper products	Non-friable
Soffit and fascia boards	Non-friable
Mechanical packing, ropes and gaskets	Non-friable
Exterior cladding	Non-friable
Fire resistant doors or metal clad finishes	Non-friable
Stucco, plaster or other cementitious parge coatings	Potentially friable
Ceramic tile thin-set	Non-friable




### 3.2 Confirmed/Presumed Asbestos-Containing Materials and Confirmed Non-Asbestos Materials




This section includes materials that have been confirmed asbestos-containing by sample analysis or presumed asbestos-containing by visual identification. Refer to the drawings in Appendix V for the locations of confirmed and presumed ACMs indicated via hatching or symbols. The locations of samples from the historical assessments performed by Pinchin, have been included on the drawings.



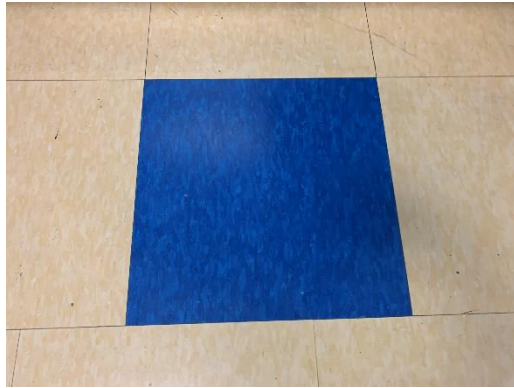
Material and Application	Asbestos Type/Friability	Photo
Parging cement is present on pipe fittings (elbows, valves, tees, hangers etc.)	Chrysotile/ Friable	
Remaining pipes are either uninsulated or insulated with non-asbestos fibreglass or elastomeric insulation (Armaflex).	None	
Ducts are either uninsulated or insulated with non-asbestos fibreglass (foil-faced or canvas).	None	
Mechanical equipment is either uninsulated or insulated with non-asbestos fibreglass.	None	
Ceiling tiles were determined to be non-asbestos by analysis.	None	
All other ceiling tiles are presumed to be non-asbestos based on the date of manufacture determined from the date stamp applied to the top of the tiles (2000).	None	



Material and Application	Asbestos Type/Friability	Photo
Non-asbestos drywall joint compound is present on wall and ceiling finishes.	None	
Transite pipe is present as rainwater leaders.	Presumed/Non-friable	
Vinyl floor tiles, 9"x9", beige with grey, yellow, brown streak, are present.	Chrysotile/Non-friable (tile) None (mastic)	
Vinyl floor tiles, 9"x9", white with black streak, are present.	Chrysotile/Non-friable (tile) None (mastic)	



Material and Application	Asbestos Type/Friability	Photo
Vinyl floor tiles, 9"x9" tan with brown and white streak are present.	Chrysotile/Non-friable (tile) None (mastic)	
Vinyl floor tiles, 9"x9" green with white streak are present.	Presumed/Non-friable (tile) Presumed/Non-friable (mastic)	
Vinyl floor tiles, 9"x9" blue with white streak are present.	Presumed/Non-friable (tile) None (mastic)	

Material and Application	Asbestos Type/Friability	Photo
Vinyl floor tiles, 12"x12" grey dense fleck are present.	Presumed/Non-friable (tile)  Presumed/Non-friable (mastic)	
Vinyl floor tiles, 12"x12" beige with grey and pink fleck are present.	Presumed/Non-friable (tile)  Presumed/Non-friable (mastic)	
Vinyl floor tiles, 12"x12" black are present.	Presumed/Non-friable (tile)  Presumed/Non-friable (mastic)	

Material and Application	Asbestos Type/Friability	Photo
Vinyl floor tiles, 12"x12" beige with grey and white marble are present.	None (tile) Presumed/Non-friable (mastic)	
Vinyl floor tiles, 12"x12" grey with white and black dense fleck are present.	None (tile) Presumed/Non-friable (mastic)	
Vinyl floor tiles, 12"x12" bright blue dense fleck are present.	None (tile) Presumed/Non-friable (mastic)	

Material and Application	Asbestos Type/Friability	Photo
Vinyl floor tiles, 12"x12" beige oatmeal are present.	None (tile) None (mastic)	
Paper heat shields in light fixtures are present.	Presumed/Non-friable	

Additional notes on the vinyl floor tiles and mastic discussed above:

- Mastic was analysed for asbestos content where it was present on the tiles, however a comprehensive testing program for mastic was not performed.

## 4.0 RECOMMENDATIONS

### 4.1 General

Perform a detailed intrusive assessment prior to building renovation or demolition operations. The assessment should include; destructive testing (i.e. coring and/or removal of building finishes and components), sampling of other hazardous materials (lead, mercury, PCBs, mould, etc.), and materials not tested in this study (i.e. excluded asbestos materials).

### 4.2 Remedial Work

Remedial work is not recommended.



### **4.3 On-going Management and Maintenance**

The following recommendations are made regarding on-going management and maintenance work involving the asbestos materials identified.

#### **4.3.1 Asbestos**

Maintain the Asbestos Management Program (AMP).

Perform a reassessment of asbestos materials on an annual basis.

Remove asbestos-containing materials (ACM) prior to alteration or maintenance work if ACM may be disturbed by the work. Follow appropriate asbestos precautions for the classification of work being performed.

Sample presumed ACM prior to alteration or maintenance work if the presumed ACM may be disturbed by the work.

Update the asbestos inventory report upon completion of any abatement and removal of asbestos-containing materials.

### **5.0 TERMS AND LIMITATIONS**

This work was performed subject to the Terms and Limitations presented or referenced in the proposal for this project.

Information provided by Pinchin is intended for Client use only. Pinchin will not provide results or information to any party unless disclosure by Pinchin is required by law. Any use by a third party of reports or documents authored by Pinchin or any reliance by a third party on or decisions made by a third party based on the findings described in said documents, is the sole responsibility of such third parties. Pinchin accepts no responsibility for damages suffered by any third party as a result of decisions made or actions conducted. No other warranties are implied or expressed.

### **6.0 REFERENCES**

The following legislation and documents were referenced in completing the assessment and this report:

1. Asbestos on Construction Projects and in Buildings and Repair Operations, Ontario Regulation 278/05.
2. Designated Substances, Ontario Regulation 490/09.

\\pinchin.com\ham\Job\303000s\0303992.000 HWCDSB,Various2022Projects,ASB,CONS\0303992.004  
HWCDSD,AllFacilities,2022,ASB,REASSMT\Deliverables\Elementary\Our Lady of Lourdes\Report\303992.004 Our Lady of Lourdes ACM Reassessment Report HWCDSD Aug  
23 2022.doc

Template: Master Report for Asbestos Reassessment, HAZ, April 23, 2019

**APPENDIX I**  
**Asbestos Analytical Certificates**





## Pinchin Ltd. Asbestos Laboratory Certificate of Analysis

**Project Name:** HWCDSB - Our Lady of Lourdes - 420 Mohawk Rd., Hamilton, ON  
**Project No.:** 0224334.000  
**Prepared For:** R. Bertin-Fenney / M. Maiorana  
**Lab Reference No.:** b193412  
**Analyst(s):** N. Barinque  
**Date Received:** July 19, 2018 **# Samples submitted:** 3  
**Date Analyzed:** July 26, 2018 **# Phases analyzed:** 1

### Method of Analysis:

**EPA 600/R-93/116 - Method for the Determination of Asbestos in Bulk Building Materials dated July, 1993**

Bulk samples are checked visually and scanned under a stereomicroscope. Slides are prepared and observed under a Polarized Light Microscope (PLM) at magnifications of 40X, 100X or 400X as appropriate. Asbestos fibres are identified by a combination of morphology, colour, refractive index, extinction, sign of elongation, birefringence and dispersion staining colours. A visual estimate is made of the percentage of asbestos present. A reported concentration of less than (<) the regulatory threshold (see chart below) indicates the presence of confirmed asbestos in trace quantities, limited to only a few fibres or fibre bundles in an entire sample. This method complies with provincial regulatory requirements where applicable. Multiple phases within a sample are analyzed and reported separately.

Provincial Jurisdiction	Regulatory Threshold	Provincial Jurisdiction	Regulatory Threshold
Ontario, British Columbia, Nova Scotia	0.5%	Alberta	Undefined
Quebec	0.1%	Saskatchewan	0.5% friable 1% non-friable
PEI, NWT, Yukon, Nunavut, Newfoundland and Labrador, and New Brunswick	1%	Manitoba	0.1% friable 1% non-friable

All bulk samples submitted to this laboratory for asbestos analysis are retained for a minimum of three months. Samples may be retrieved, upon request, for re-examination at any time during that period.

Pinchin Ltd. is accredited by the National Institute of Standards and Technology, National Voluntary Laboratory Accreditation Program (NVLAP Lab Code 101270-0) for the 'EPA-600/M4-82-020: Interim Method for the Determination of Asbestos in Bulk Insulation Samples,' and the 'EPA 600/R-93/116: Method for the Determination of Asbestos in Bulk Building Materials'; and meets all requirements of ISO/IEC 17025:2005.

This report relates only to the items tested.

**NOTE:** *This test report may not be reproduced, except in full, without the written approval of the laboratory. The client may not use this report to claim product endorsement by NVLAP or any agency of the U.S. Government. This report is valid only when signed in blue ink by the analyst. Vinyl asbestos floor tiles contain very fine fibres of asbestos and may be missed by some laboratories using the PLM method. Internal verification studies performed by Pinchin indicate that the chance of missing asbestos in floor tiles is no higher than about 2%. The vinyl tile study and laboratory documentation on measurement uncertainty is available upon request. The analysis of dust samples by PLM cannot be used as an indicator of past or present airborne asbestos fibre levels.*



**Pinchin Ltd. Asbestos Laboratory**  
***Certificate of Analysis***

**Project Name:** HWCDSB - Our Lady of Lourdes - 420 Mohawk Rd., Hamilton, ON  
**Project No.:** 0224334.000  
**Prepared For:** R. Bertin-Fenney / M. Maiorana

**Lab Reference No.:** b193412  
**Date Analyzed:** July 26, 2018

**BULK SAMPLE ANALYSIS**

SAMPLE IDENTIFICATION	SAMPLE DESCRIPTION	% COMPOSITION (VISUAL ESTIMATE)	
		ASBESTOS	OTHER
0001A Parging cement fitting, Classroom 11, Loc. 104	Homogeneous, grey, soft, parging cement.	Chrysotile > 75%	Non-Fibrous Material 10-25%
0001B Parging cement fitting, Classroom 11, Loc. 104			Not Analyzed
Comments:	Analysis was stopped due to a previous positive result.		
0001C Parging cement fitting, Classroom 11, Loc. 104			Not Analyzed
Comments:	Analysis was stopped due to a previous positive result.		

**Reviewed by:**

**Reporting Analyst:**





CC

Analyzed by: MB  
Reviewed by: MB  
Report Sent by: JK**Instructions:****Pinchin Ltd. - Asbestos Laboratory  
Internal Asbestos Bulk Sample Chain of Custody**

Client Name:	HWCDSD - Our Lady of Lourdes	Project Address:	420 Mohawk Rd, Hamilton, ON
Portfolio/Building No:		Pinchin File:	224334
Submitted by:	Robert Bertin-Fenney	Email:	<a href="mailto:rbertin-fenney@pinchin.com">rbertin-fenney@pinchin.com</a>
CC Results to:	Michael Maiorana	CC Email:	<a href="mailto:mmaioranan@pinchin.com">mmaioranan@pinchin.com</a>
Invoice to:	Accounts Payable	Invoice Email:	<a href="mailto:ap@pinchin.com">ap@pinchin.com</a>
Date Submitted:	July 17 2018	Required by:	July 25 2018
# of Samples:	3	Priority:	5 Day Turnaround
Year of Building Construction (Mandatory Field):			
Do NOT Stop on Positive (Sample Numbers):			
Pinchin Group Company (Mandatory Field):		Pinchin	

<b>To be Completed by Lab Personnel Only:</b>			
Lab Reference #:	0193412	Time:	24 hour clock
Received by:	JUL 19 2018 JK	Date:	Month Day Year
Name(s) of Analyst(s): <u>NB 18-07-26</u>			
Sample Prefix	Sample No.	Sample Suffix	Sample Description/Location (Mandatory)
	0001	A	Parging cement fitting, Classroom 11, Loc. 104 CH > 75%
	0001	B	Parging cement fitting, Classroom 11, Loc. 104 -ha
	0001	C	Parging cement fitting, Classroom 11, Loc. 104 -ha



## Pinchin Ltd. Asbestos Laboratory *Certificate of Analysis*

Project Name:	Hamilton-Wentworth Catholic School Board, Our Lady of Lourdes, 420 Mohawk Road East, Hamilton, Ontario		
Project No.:	0272113.000		
Prepared For:	E. Balfour / M. Maiorana		
Lab Reference No.:	b230648	Date Received:	May 21, 2020
Analyst(s):	K. Cockburn	Date Analyzed:	May 28, 2020
		# Samples submitted:	3
		# Phases analyzed:	1

---

### Method of Analysis:

#### **EPA 600/R-93/116 - Method for the Determination of Asbestos in Bulk Building Materials dated July, 1993**

Bulk samples are checked visually and scanned under a stereomicroscope. Slides are prepared and observed under a Polarized Light Microscope (PLM) at magnifications of 40X, 100X or 400X as appropriate. Asbestos fibres are identified by a combination of morphology, colour, refractive index, extinction, sign of elongation, birefringence and dispersion staining colours. A visual estimate is made of the percentage of asbestos present. A reported concentration of less than (<) the regulatory threshold (see chart below) indicates the presence of confirmed asbestos in trace quantities, limited to only a few fibres or fibre bundles in an entire sample. This method complies with provincial regulatory requirements where applicable. Multiple phases within a sample are analyzed and reported separately.

All bulk samples submitted to this laboratory for asbestos analysis are retained for a minimum of three months. Samples may be retrieved, upon request, for re-examination at any time during that period.

The Pinchin Ltd. Mississauga asbestos laboratory is accredited by the National Institute of Standards and Technology, National Voluntary Laboratory Accreditation Program (NVLAP Lab Code 101270-0) for the 'EPA – 40 CFR Appendix E to Subpart E of Part 763, Interim Method of the Determination of Asbestos in Bulk Insulation Samples,' and the 'EPA 600/R-93/116: Method for the Determination of Asbestos in Bulk Building Materials'; and meets all requirements of ISO/IEC 17025:2005.

This report relates only to the items tested.

**NOTE:** *This test report may not be reproduced, except in full, without the written approval of the laboratory. The client may not use this report to claim product endorsement by NVLAP or any agency of the U.S. Government. This report is valid only when signed in blue ink by the analyst. Vinyl asbestos floor tiles contain very fine fibres of asbestos and may be missed by some laboratories using the PLM method. Internal verification studies performed by Pinchin indicate that the chance of missing asbestos in floor tiles is no higher than about 2%. The vinyl tile study and laboratory documentation on measurement uncertainty is available upon request. The analysis of dust samples by PLM cannot be used as an indicator of past or present airborne asbestos fibre levels.*



**Pinchin Ltd. Asbestos Laboratory**  
***Certificate of Analysis***

**Project Name:** Hamilton-Wentworth Catholic School Board, Our Lady of Lourdes,  
**Project No.:** 0272113.000  
**Prepared For:** E. Balfour / M. Maiorana

**Lab Reference No.:** b230648  
**Date Analyzed:** May 28, 2020

**BULK SAMPLE ANALYSIS**

SAMPLE IDENTIFICATION	SAMPLE DESCRIPTION	% COMPOSITION (VISUAL ESTIMATE)	
		ASBESTOS	OTHER
S0016A Parging cement, Office, Location 100	Homogeneous, light grey, soft, parging cement.	Chrysotile > 75%	Non-Fibrous Material 10-25%
Comments:	Cotton fabric reinforcement is present on the surface of this sample.		
S0016B Parging cement, Bookroom 13, Location 103			Not Analyzed
Comments:	Analysis was stopped due to a previous positive result.		
S0016C Parging cement, Girl's Washroom, Location 119			Not Analyzed
Comments:	Analysis was stopped due to a previous positive result.		

**Reviewed by:**

**Reporting Analyst:**



Analyzed by: [Signature]  
Reviewed by: KB  
Report Sent by: 14



**Instructions:**

**Pinchin Ltd. - Asbestos Laboratory  
Internal Asbestos Bulk Sample Chain of Custody**

<b>Client Name:</b>	Hamilton-Wentworth Catholic School Board	<b>Project Address:</b>	420 Mohawk Road East, Hamilton, Ontario
<b>Portfolio/Building No:</b>	Our Lady of Lourdes	<b>Pinchin File:</b>	272113
<b>Submitted by:</b>	Emily Balfour	<b>Email:</b>	ebalfour@pinchin.com
<b>CC Results to:</b>	Michael Maiorana	<b>CC Email:</b>	mmaiiorana@pinchin.com
<b>Invoice to:</b>	Accounts Payable	<b>Invoice Email:</b>	ap@pinchin.com
<b>Date Submitted:</b>	May 19 2020	<b>Required by:</b>	May 26 2020
<b># of Samples:</b>	3	<b>Priority:</b>	5 Day Turnaround
<b>Year of Building Construction (Mandatory Field):</b>		1957	
<b>Do NOT Stop on Positive (Sample Numbers):</b>			
<b>Pinchin Group Company (Mandatory Field):</b>		Pinchin	

<b>To be Completed by Lab Personnel Only:</b>			
<b>Lab Reference #:</b>	MAY 21 2020		<b>Time:</b> 24 hour clock
<b>Received by:</b>			<b>Date:</b> Month Day Year
<b>Name(s) of Analyst(s):</b> KC 2020/05/28			
<b>Sample Prefix</b>	<b>Sample No.</b>	<b>Sample Suffix</b>	<b>Sample Description/Location (Mandatory)</b>
	S0016	A	Parging cement, Office, Location 100 CH 50 <sup>KC</sup> 7 > 75%
	S0016	B	Parging cement, Bookroom 13, Location 103 - NA -
	S0016	C	Parging cement, Girl's Washroom, Location 119 - NA -

**APPENDIX II**  
**Location List**

**Client:** Hamilton-Wentworth Catholic District Sch  
**Building Name:** Our Lady of Lourdes  
**Survey Date:** 2018-07-17

**Site:** 420 Mohawk Road East, Hamilton, ON  
**Last Re-Assessment:** 2022-05-11

Location No.	Name or Description	Area ft <sup>2</sup>	Floor No.	Bldg. Phase	Notes
1	General	0		A	
100	Office	0	1	A	
101	Foyer	0	1	A	
102	Corridor	0	1	A	
103	Storage	0	1	A	
104	Classroom 11	0	1	A	
105	Bookroom 13	0	1	A	
106	Storage 12	0	1	A	
107	Library	0	1	A	
108	Classroom 10	0	1	A	
109	Classroom 9	0	1	A	
110	Girls Washroom	0	1	A	
111	Storage	0	1	A	
112	Unknown	0	1	A	
113	Office	0	1	A	
114	Storage	0	1	A	
115	Foyer	0	1	A	
116	Corridor	0	1	A	
117	Boiler Room	0	1	A	
118	Staff Room	0	1	A	
119	Girls Washroom	0	1	A	
120	Boys Washroom	0	1	A	
121	Staff Room	0	1	A	
122	Classroom 7	0	1	A	
123	Classroom 5	0	1	A	
124	Classroom 6	0	1	A	
125	Classroom 4	0	1	A	
126	Corridor	0	1	A	
127	Foyer	0	1	A	
128	Classroom 3	0	1	A	
129	Storage	0	1	A	
130	Foyer	0	1	A	
131	Classroom 2	0	1	A	
132	Classroom 1	0	1	A	
133	Principal Office	0	1	A	
134	Janitor	0	1	A	
135	Stairs	0	1	A	
136	Girls Washroom	0	1	A	
137	Boys Washroom	0	1	A	
138	Classroom 14	0	1	A	
139	Corridor	0	1	A	
140	Classroom 15	0	1	A	
141	Unknown	0	1	A	
142	Classroom 17	0	1	A	
143	Stairs	0	1	A	
144	Gym Entrance	0	1	A	
145	Foyer	0	1	A	
146	Gym	0	1	A	
147	Gym Storage	0	1	A	
148	Change Room	0	1	A	
149	Change Room	0	1	A	
200	Staff Room	0	2	A	
201	Kindergarten	0	2	A	
202	Stairs	0	2	A	
203	Corridor	0	2	A	
204	Unknown	0	2	A	
205	Classroom 21	0	2	A	
206	Custodian Room	0	2	A	
207	Classroom 20	0	2	A	
208	Classroom 19	0	2	A	
209	Classroom 18	0	2	A	
210	Stairs	0	2	A	

**APPENDIX III**  
**Summary Report**

Client: Hamilton-Wentworth Catholic District Sch

Site: 420 Mohawk Road East, Hamilton, ON

Building Name: Our Lady of Lourdes

Survey Date: 2018-07-17

HAZMAT	Sample No	System/Component/Material/Sample Description	Locations	Bldg. Phase	LF	SF	EA	%	Type	Positive	Friability
Asbestos	S0001	Ceiling     Ceiling Tiles (lay-in)	200,203	A	0	0	0	0	None Detected	No	
Asbestos	S0002	Ceiling   Acoustic Tile   Ceiling Tiles (lay-in)   Mte Sample Id# 38313-100-s02 (sampled 16-jul-13)	101,143,201,202,203,204,205,206,207,208,209,210	A	0	0	0	0	None Detected	No	
Asbestos	S0003	Ceiling   Acoustic Tile   Ceiling Tiles (lay-in)   Mte Sample Id #38313-100-s03 (sampled 16-jul-13)	102,115,116,126,139	A	0	0	0	0	None Detected	No	
Asbestos	S0004	Ceiling     Ceiling Tiles (lay-in)   Mte Sample Id# 38313-100-s04 (sampled 16-jul-13)	107,127,130	A	0	0	0	0	None Detected	No	
Asbestos	S0005	Ceiling     Ceiling Tiles (lay-in)   Mte Sample Id# 38313-100-s05 (sampled 16-jul-13)	118,136,137	A	0	0	0	0	None Detected	No	
Asbestos	S0006	Ceiling     Ceiling Tiles (lay-in)   Mte Sample Id# 38313-100-s06 (sampled 16-jul-13)	133	A	0	0	0	0	None Detected	No	
Asbestos	S0010	Floor     Vinyl Floor Tile (no Mastic)   Agat# 16h147240 (sampled 2016)	105,106	A	0	0	0	0	None Detected	No	
Asbestos	V0011	Wall     Drywall And Joint Compound   Agat# 17h230171 (sampled 2017) Djc	106,118,121	A	0	0	0	100	None Detected	No	
Asbestos	V0012	Floor     Vinyl Floor Tile (no Mastic)   Agat#17h230171 (2017) Layer 1 12x12 Vft, Layer 2 Mastic	112	A	0	0	0	0	None Detected	No	
Asbestos	S0013	Floor     Vinyl Floor Tile (no Mastic)   Agat# 16h147239 (2016) Layer 1 9x9 White W Black Streak, Layer 2 Mastic	200,205,206	A	0	0	0	100	Asbestos Containing	Yes	NF
Asbestos	S0014	Ceiling     Ceiling Tiles (lay-in)   Hwcdsb Sample (2016)	144	A	0	0	0	0	None Detected	No	
Asbestos	S0015	Piping     Parging Cement   Pinchin Sample #0001 (analyzed 26-jul-18)	104	A	0	0	5	0	Chrysotile	Yes	F
Asbestos	S0016 ABC	Piping     Parging Cement	100,102,105,106,119,120,125,134,142,208,209	A	0	0	34	0	Chrysotile	Yes	F
Asbestos	V9000	Floor     Vinyl Floor Tile (no Mastic)   9x9 Beige With Grey, Yellow And Brown Streak, 9x9 Tan W Brown And White Streak	129,203	A	0	0	0	100	Confirmed Asbestos	Yes	NF
Asbestos	V9500	Floor     Mastic	100,105,107,108,109,111,113,114,121,122,123,124,125,134,135,140,141,142,144,146,148,149,201,202,204,207,208,209,210	A	0	0	0	100	Presumed Asbestos	Yes	NF
Asbestos	V9500	Floor     Vinyl Floor Tile (no Mastic)   12x12 Beige W Grey And Pink Fleck, 12x12 Beige With Grey And Pink Fleck, 12x12 Black, 12x12 Green Dense Fleck, 12x12 Grey Dense Fleck, 12x12 Grey With Dark Grey And Pink Fleck, 12x12 Lime Green With White Fleck, 12x12	104,107,108,109,111,112,121,122,123,124,125,135,140,141,142,148,149,201,202,203,204,205,206,207,208,209,210	A	0	0	0	100	Presumed Asbestos	Yes	NF



HAZMAT	Sample No	System/Component/Material/Sample Description	Locations	Bldg. Phase	LF	SF	EA	%	Type	Positive	Friability
		Pink Dense Fleck, 12x12 Pink And Red Dense Fleck, 12x12 White W Black Fleck, 12x12 White With Black Fleck, 9x9 Beige W Tan Streak, 9x9 Green W White Streak, 9x9 Blue W White Streak, 9x9 Blue With White Streak									
Asbestos	V9500	Floor     Vinyl Floor Tile And Mastic   12x12 Blue With Black And White Fleck	133	A	0	0	0	100	Presumed Asbestos	Yes	NF
Asbestos	V9500	Other   Door, Window   Caulking	1	A	0	0	0	100	Presumed Asbestos	Yes	NF
Asbestos	V9500	Other   Electrical Equipment   Cement Product   Transite Components On Electrical And Switchgear Equipment	1	A	0	0	0	100	Presumed Asbestos	Yes	NF
Asbestos	V9500	Other   Light Fixture   Paper   Heat Shield	129,204,205,206,207,208,209	A	0	0	12	0	Presumed Asbestos	Yes	NF
Asbestos	V9500	Other   Electrical Wire   Textile   Woven Jacketing And Insulation On Older Wiring	1	A	0	0	0	100	Presumed Asbestos	Yes	NF
Asbestos	V9500	Piping   Rain Water Leader   Cement Product	147	A	0	0	0	100	Presumed Asbestos	Yes	NF
Asbestos	V9500	Structure   Roof   Roofing Material	1	A	0	0	0	100	Presumed Asbestos	Yes	NF
Asbestos	V9500	Wall   Interior   Vermiculite/concrete Block Walls	1	A	0	0	0	100	Presumed Asbestos	Yes	F
Asbestos	V0000	Ceiling     Ceiling Tiles (lay-in)   2x2 Short Fissure Random Pinhole (date Stamp 2000)	145,148,149	A	0	0	0	100	Non Asbestos	No	
Asbestos	V0000	Ceiling     Concrete (precast)	100,103,104,105,106,108,109,110,111,112,113,114,117,119,120,122,123,124,125,128,129,131,132	A	0	0	0	0	Non Asbestos	No	
Asbestos	V0000	Floor     Carpet	106	A	0	0	0	0	Non Asbestos	No	
Asbestos	V0000	Floor     Ceramic Tiles	101,102,115,116,126,127,130,131,139,143,145,148,149	A	0	0	0	0	Non Asbestos	No	
Asbestos	V0000	Floor     Concrete (poured)	117,138,147	A	0	0	0	0	Non Asbestos	No	
Asbestos	V0000	Floor     Mastic	104,112,128,129,131,132,138,200,203,205,206	A	0	0	0	100	Non Asbestos	No	
Asbestos	V0000	Floor     Mastic   Sampled Agat 16h230171	118	A	0	0	0	0	Non Asbestos	No	
Asbestos	V0000	Floor     Terrazzo	110,119,120,136,137	A	0	0	0	0	Non Asbestos	No	
Asbestos	V0000	Floor     Vinyl Floor Tile (no Mastic)   12x12 Bright Blue Dense Fleck	114,146	A	0	0	0	0	Non Asbestos	No	
Asbestos	V0000	Floor     Vinyl Floor Tile (no Mastic)   12x12 Cream W White Fleck	144,146	A	0	0	0	0	Non Asbestos	No	
Asbestos	V0000	Floor     Vinyl Floor Tile (no Mastic)   12x12	128,131,132	A	0	0	0	0	Non	No	

HAZMAT	Sample No	System/Component/Material/Sample Description	Locations	Bldg. Phase	LF	SF	EA	%	Type	Positive	Friability
		Cream With White Fleck							Asbestos		
Asbestos	V0000	Floor     Vinyl Floor Tile (no Mastic)   12x12 Grey W White And Black Dense Fleck (hwcdsb Sample)	113	A	0	0	0	100	Non Asbestos	No	
Asbestos	V0000	Floor     Vinyl Floor Tile (no Mastic)   12x12 Grey W White And Black Dense Fleck, Previously Sampled Agat 17h230171	118	A	0	0	0	0	Non Asbestos	No	
Asbestos	V0000	Floor     Vinyl Floor Tile And Mastic   12 X 12 Beige Oatmeal	103	A	0	0	0	100	Non Asbestos	No	
Asbestos	V0000	Floor     Vinyl Floor Tile And Mastic   12x12 Grey Oatmeal	138	A	0	0	0	0	Non Asbestos	No	
Asbestos	V0000	Piping     Fibreglass	100,104,105,106,107,118,119,120,131	A	0	0	0	0	Non Asbestos	No	
Asbestos	V0000	Piping     Polyvinyl Chloride (pvc)	108,116,117,121,122,123,124,136,137,147	A	0	0	0	0	Non Asbestos	No	
Asbestos	V0000	Structure   Beam Deck Joist, Beam, Deck   Steel	134,135,138,146,147	A	0	0	0	0	Non Asbestos	No	
Asbestos	V0000	Wall   Exterior   Masonry	1,100,101,102,103,104,105,106,107,108,109,110,111,112,113,114,115,116,117,119,121,122,123,124,125,126,127,128,129,130,131,132,134,135,136,137,138,139,140,141,142,143,144,145,146,147,148,149,200,201,202,203,204,205,206,207,208,209,210	A	0	0	0	0	Non Asbestos	No	
Asbestos	V0000	Wall     Wood   Paneling	133	A	0	0	0	0	Non Asbestos	No	

## Legend:

Sample number	
S####	Asbestos sample collected
L####	Paint sample collected
P####	PCB sample collected
M####	Mould sample collected
V####	Material visually similar to numbered sample collected
V0000	Known non Hazardous Material
V9000	Material is visually identified as Hazardous Material
V9500	Material is presumed to be Hazardous Material
[Loc. No.]	Abated Material

Units	
SF	Square feet
LF	Linear feet
EA	Each
%	Percentage

NF	Non Friable material.
F	Friable material
PF	Potentially Friable material

**APPENDIX IV**  
**All Data Report**

# ALL DATA REPORT

**Client:** Hamilton-Wentworth Catholic District Sch  
**Location:** #1 : General  
**Survey Date:** 2018-07-17

**Site:** Elementary  
**Floor:**

**Building Name:** Our Lady of Lourdes  
**Room #:**  
**Last Re-Assessment:** 2022-05-11

**Area (sqft):** 0

ASBESTOS																
System	Component	Material	Item	Covering	A*	V*	AP*	Good	Fair	Poor	Unit	Sample	Asbestos Type	Amount	Hazard	Friable
Other	Door	Caulking			A	Y		100			%	V9500	Presumed Asbestos		Presumed Asbestos	NF
Other	Electrical Equipment	Cement Product, Transite components on electrical and switchgear equipment			B	N		100			%	V9500	Presumed Asbestos		Presumed Asbestos	NF
Other	Electrical Wire	Textile, Woven jacketing and insulation on older wiring			B	N		100			%	V9500	Presumed Asbestos		Presumed Asbestos	NF
Other	Window	Caulking			A	Y		100			%	V9500	Presumed Asbestos		Presumed Asbestos	NF
Structure	Roof	Roofing material			C	N		100			%	V9500	Presumed Asbestos		Presumed Asbestos	NF
Wall	Exterior	Masonry			A	Y						V0000	Non-Asbestos		None	
Wall	Interior	Vermiculite/concrete block walls			D	N		100			%	V9500	Presumed Asbestos		Presumed Asbestos	F

# ALL DATA REPORT

**Client:** Hamilton-Wentworth Catholic District Sch  
**Location:** #100 : Office  
**Survey Date:** 2018-07-17

**Site:** Elementary  
**Floor:** 1

**Building Name:** Our Lady of Lourdes  
**Room #:**  
**Last Re-Assessment:** 2022-05-11

**Area (sqft):** 0

ASBESTOS																
System	Component	Material	Item	Covering	A*	V*	AP*	Good	Fair	Poor	Unit	Sample	Asbestos Type	Amount	Hazard	Friable
Ceiling		Concrete (precast)			C	Y						V0000	Non-Asbestos		None	
Floor		Laminate			A	Y										
Floor		Mastic			D	N		100			%	V9500	Presumed Asbestos		Presumed Asbestos	NF
Piping		Fibreglass	Insulation		C	Y						V0000	Non-Asbestos		None	
Piping		Parging Cement	Fitting		C	Y		6			EA	S0016A	Chrysotile	>75%	Confirmed Asbestos	F
Wall		Masonry			A	Y						V0000	Non-Asbestos		None	

**Client:** Hamilton-Wentworth Catholic District Sch  
**Location:** #101 : Foyer  
**Survey Date:** 2018-07-17

**Site:** Elementary  
**Floor:** 1

**Building Name:** Our Lady of Lourdes  
**Room #:**  
**Last Re-Assessment:** 2022-05-11

**Area (sqft):** 0

ASBESTOS																
System	Component	Material	Item	Covering	A*	V*	AP*	Good	Fair	Poor	Unit	Sample	Asbestos Type	Amount	Hazard	Friable
Ceiling	Acoustic Tile	Ceiling Tiles (lay-in), 2x4 Large Pinhole			C	Y						V0002	None Detected		None	
Floor		Ceramic Tiles			A	Y						V0000	Non-Asbestos		None	
Wall		Masonry			A	Y						V0000	Non-Asbestos		None	

ALL DATA REPORT

**Client:** Hamilton-Wentworth Catholic District Sch  
**Location:** #102 : Corridor  
**Survey Date:** 2018-07-17

**Site:** Elementary  
**Floor:** 1

**Building Name:** Our Lady of Lourdes  
**Room #:**  
**Last Re-Assessment:** 2022-05-11

**Area (sqft):** 0

ASBESTOS																
System	Component	Material	Item	Covering	A*	V*	AP*	Good	Fair	Poor	Unit	Sample	Asbestos Type	Amount	Hazard	Friable
Ceiling	Acoustic Tile	Ceiling Tiles (lay-in), 2x4 Wide Fissure Random Pinhole			C	Y						S0003	None Detected		None	
Floor		Ceramic Tiles			A	Y						V0000	Non-Asbestos		None	
Piping		Parging Cement	Fitting		A	Y		3			EA	V0016	Chrysotile	>75%	Confirmed Asbestos	F
Wall		Masonry			A	Y						V0000	Non-Asbestos		None	

**Client:** Hamilton-Wentworth Catholic District Sch  
**Location:** #103 : Storage  
**Survey Date:** 2018-07-17

**Site:** Elementary  
**Floor:** 1

**Building Name:** Our Lady of Lourdes  
**Room #:**  
**Last Re-Assessment:** 2022-05-11

**Area (sqft):** 0

ASBESTOS																
System	Component	Material	Item	Covering	A*	V*	AP*	Good	Fair	Poor	Unit	Sample	Asbestos Type	Amount	Hazard	Friable
Ceiling		Concrete (precast)			C	Y						V0000	Non-Asbestos		None	
Floor		Vinyl Floor Tile and Mastic, 12 x 12 beige oatmeal			A	Y		100			%	V0000	Non-Asbestos		None	
Wall		Masonry			A	Y						V0000	Non-Asbestos		None	

# ALL DATA REPORT

**Client:** Hamilton-Wentworth Catholic District Sch  
**Location:** #104 : Classroom 11  
**Survey Date:** 2018-07-17

**Site:** Elementary  
**Floor:** 1

**Building Name:** Our Lady of Lourdes  
**Room #:**  
**Last Re-Assessment:** 2022-05-11

**Area (sqft):** 0

ASBESTOS																
System	Component	Material	Item	Covering	A*	V*	AP*	Good	Fair	Poor	Unit	Sample	Asbestos Type	Amount	Hazard	Friable
Ceiling		Concrete (precast)			C	Y						V0000	Non-Asbestos		None	
Floor		Mastic			D	N						V0000	Non-Asbestos		None	
Floor		Vinyl Floor Tile (No Mastic), 12x12 Grey Dense Fleck			A	Y		100			%	V9500	Presumed Asbestos		Presumed Asbestos	NF
Floor		Vinyl Floor Tile (No Mastic), 12x12 Beige w Grey and Pink Fleck			A	Y		100			%	V9500	Presumed Asbestos		Presumed Asbestos	NF
Piping		Fibreglass	Insulation		C	Y						V0000	Non-Asbestos		None	
Piping		Parging Cement	Fitting		C	Y		5			EA	S0015	Chrysotile	>75%	Confirmed Asbestos	F
Wall		Masonry			A	Y						V0000	Non-Asbestos		None	



# ALL DATA REPORT

**Client:** Hamilton-Wentworth Catholic District Sch  
**Location:** #105 : Bookroom 13  
**Survey Date:** 2018-07-17

**Site:** Elementary  
**Floor:** 1

**Building Name:** Our Lady of Lourdes  
**Room #:**  
**Last Re-Assessment:** 2022-05-11

**Area (sqft):** 0

ASBESTOS																
System	Component	Material	Item	Covering	A*	V*	AP*	Good	Fair	Poor	Unit	Sample	Asbestos Type	Amount	Hazard	Friable
Ceiling		Concrete (precast)			C	Y						V0000	Non-Asbestos		None	
Floor		Mastic			D	N		100			%	V9500	Presumed Asbestos		Presumed Asbestos	NF
Floor		Vinyl Floor Tile (No Mastic), 12x12 Beige w Grey and White Marble			A	Y						S0010	None Detected		None	
Piping		Fibreglass	Insulation		C	Y						V0000	Non-Asbestos		None	
Piping		Parging Cement	Fitting		C	Y		3			EA	S0016B	Chrysotile	>75%	Confirmed Asbestos	F
Wall		Masonry			A	Y						V0000	Non-Asbestos		None	

**Client:** Hamilton-Wentworth Catholic District Sch  
**Location:** #106 : Storage 12  
**Survey Date:** 2018-07-17

**Site:** Elementary  
**Floor:** 1

**Building Name:** Our Lady of Lourdes  
**Room #:**  
**Last Re-Assessment:** 2022-05-11

**Area (sqft):** 0

ASBESTOS																
System	Component	Material	Item	Covering	A*	V*	AP*	Good	Fair	Poor	Unit	Sample	Asbestos Type	Amount	Hazard	Friable
Ceiling		Concrete (precast)			C	Y						V0000	Non-Asbestos		None	
Floor		Carpet			A	Y						V0000	Non-Asbestos		None	
Floor		Mastic			D	N						S0010	None Detected		None	
Floor		Vinyl Floor Tile (No Mastic), 12x12 Beige w Grey and White Marble			A	Y						S0010	None Detected		None	
Piping		Fibreglass	Insulation		C	Y						V0000	Non-Asbestos		None	
Piping		Parging Cement	Fitting		C	Y		1			EA	V0016	Chrysotile	>75%	Confirmed Asbestos	F
Wall		Drywall and joint compound			A	Y						V0011	None Detected		None	
Wall		Masonry			A	Y						V0000	Non-Asbestos		None	

ALL DATA REPORT

**Client:** Hamilton-Wentworth Catholic District Sch  
**Location:** #107 : Library  
**Survey Date:** 2018-07-17

**Site:** Elementary  
**Floor:** 1

**Building Name:** Our Lady of Lourdes  
**Room #:**  
**Last Re-Assessment:** 2022-05-11

**Area (sqft):** 0

ASBESTOS																
System	Component	Material	Item	Covering	A*	V*	AP*	Good	Fair	Poor	Unit	Sample	Asbestos Type	Amount	Hazard	Friable
Ceiling		Ceiling Tiles (lay-in), 2x4 Short Fissure Random Pinhole			C	Y						S0004	None Detected		None	
Floor		Mastic			D	N		100			%	V9500	Presumed Asbestos		Presumed Asbestos	NF
Floor		Vinyl Floor Tile (No Mastic), 12x12 Grey Dense Fleck			A	Y		100			%	V9500	Presumed Asbestos		Presumed Asbestos	NF
Piping		Fibreglass	Insulation	Polyvinyl chloride (PVC)	C	N						V0000	Non-Asbestos		None	
Wall		Masonry			A	Y						V0000	Non-Asbestos		None	

**Client:** Hamilton-Wentworth Catholic District Sch  
**Location:** #108 : Classroom 10  
**Survey Date:** 2018-07-17

**Site:** Elementary  
**Floor:** 1

**Building Name:** Our Lady of Lourdes  
**Room #:**  
**Last Re-Assessment:** 2022-05-11

**Area (sqft):** 0

ASBESTOS																
System	Component	Material	Item	Covering	A*	V*	AP*	Good	Fair	Poor	Unit	Sample	Asbestos Type	Amount	Hazard	Friable
Ceiling		Concrete (precast)			C	Y						V0000	Non-Asbestos		None	
Floor		Mastic			D	N		100			%	V9500	Presumed Asbestos		Presumed Asbestos	NF
Floor		Vinyl Floor Tile (No Mastic), 12x12 Beige with Grey and Pink Fleck			A	Y		100			%	V9500	Presumed Asbestos		Presumed Asbestos	NF
Piping		Polyvinyl chloride (PVC)	Insulation	Fibreglass	C	N						V0000	Non-Asbestos		None	
Wall		Masonry			A	Y						V0000	Non-Asbestos		None	

ALL DATA REPORT

**Client:** Hamilton-Wentworth Catholic District Sch  
**Location:** #109 : Classroom 9  
**Survey Date:** 2018-07-17

**Site:** Elementary  
**Floor:** 1

**Building Name:** Our Lady of Lourdes  
**Room #:**  
**Last Re-Assessment:** 2022-05-11

**Area (sqft):** 0

ASBESTOS																
System	Component	Material	Item	Covering	A*	V*	AP*	Good	Fair	Poor	Unit	Sample	Asbestos Type	Amount	Hazard	Friable
Ceiling		Concrete (precast)			C	Y						V0000	Non-Asbestos		None	
Floor		Mastic			D	N		100			%	V9500	Presumed Asbestos		Presumed Asbestos	NF
Floor		Vinyl Floor Tile (No Mastic), 12x12 Grey with Dark Grey and Pink Fleck			A	Y		100			%	V9500	Presumed Asbestos		Presumed Asbestos	NF
Wall		Masonry			A	Y						V0000	Non-Asbestos		None	

**Client:** Hamilton-Wentworth Catholic District Sch  
**Location:** #110 : Girls Washroom  
**Survey Date:** 2018-07-17

**Site:** Elementary  
**Floor:** 1

**Building Name:** Our Lady of Lourdes  
**Room #:**  
**Last Re-Assessment:** 2022-05-11

**Area (sqft):** 0

ASBESTOS																
System	Component	Material	Item	Covering	A*	V*	AP*	Good	Fair	Poor	Unit	Sample	Asbestos Type	Amount	Hazard	Friable
Ceiling		Concrete (precast)			C	Y						V0000	Non-Asbestos		None	
Floor		Terrazzo			A	Y						V0000	Non-Asbestos		None	
Wall		Masonry			A	Y						V0000	Non-Asbestos		None	

ALL DATA REPORT

**Client:** Hamilton-Wentworth Catholic District Sch  
**Location:** #111 : Storage  
**Survey Date:** 2018-07-17

**Site:** Elementary  
**Floor:** 1

**Building Name:** Our Lady of Lourdes  
**Room #:**  
**Last Re-Assessment:** 2022-05-11

**Area (sqft):** 0

ASBESTOS																
System	Component	Material	Item	Covering	A*	V*	AP*	Good	Fair	Poor	Unit	Sample	Asbestos Type	Amount	Hazard	Friable
Ceiling		Concrete (precast)			C	Y						V0000	Non-Asbestos		None	
Floor		Mastic			D	N		100			%	V9500	Presumed Asbestos		Presumed Asbestos	NF
Floor		Vinyl Floor Tile (No Mastic), 12x12 Grey Dense Fleck			A	Y						V9500	Presumed Asbestos		Presumed Asbestos	NF
Wall		Masonry			A	Y						V0000	Non-Asbestos		None	

**Client:** Hamilton-Wentworth Catholic District Sch  
**Location:** #112 : Unknown  
**Survey Date:** 2018-07-17

**Site:** Elementary  
**Floor:** 1

**Building Name:** Our Lady of Lourdes  
**Room #:**  
**Last Re-Assessment:** 2022-05-11

**Area (sqft):** 0

ASBESTOS																
System	Component	Material	Item	Covering	A*	V*	AP*	Good	Fair	Poor	Unit	Sample	Asbestos Type	Amount	Hazard	Friable
Ceiling		Concrete (precast)			C	Y						V0000	Non-Asbestos		None	
Floor		Mastic			D	N						V0000	Non-Asbestos		None	
Floor		Vinyl Floor Tile (No Mastic), 12x12 Lime Green with White Fleck			A	Y		100			%	V9500	Presumed Asbestos		Presumed Asbestos	NF
Floor		Vinyl Floor Tile (No Mastic)			A	Y						V0012	None Detected		None	
Wall		Masonry			A	Y						V0000	Non-Asbestos		None	

ALL DATA REPORT

**Client:** Hamilton-Wentworth Catholic District Sch  
**Location:** #113 : Office  
**Survey Date:** 2018-07-17

**Site:** Elementary  
**Floor:** 1

**Building Name:** Our Lady of Lourdes  
**Room #:**  
**Last Re-Assessment:** 2022-05-11

**Area (sqft):** 0

ASBESTOS																
System	Component	Material	Item	Covering	A*	V*	AP*	Good	Fair	Poor	Unit	Sample	Asbestos Type	Amount	Hazard	Friable
Ceiling		Concrete (precast)			C	Y						V0000	Non-Asbestos		None	
Floor		Mastic			D	N		100			%	V9500	Presumed Asbestos		Presumed Asbestos	NF
Floor		Vinyl Floor Tile (No Mastic), 12x12 Grey w White and Black Dense Fleck (HWCDSD sample)			A	Y		100			%	V0000	Non-Asbestos		None	
Wall		Masonry			A	Y						V0000	Non-Asbestos		None	

**Client:** Hamilton-Wentworth Catholic District Sch  
**Location:** #114 : Storage  
**Survey Date:** 2018-07-17

**Site:** Elementary  
**Floor:** 1

**Building Name:** Our Lady of Lourdes  
**Room #:**  
**Last Re-Assessment:** 2022-05-11

**Area (sqft):** 0

ASBESTOS																
System	Component	Material	Item	Covering	A*	V*	AP*	Good	Fair	Poor	Unit	Sample	Asbestos Type	Amount	Hazard	Friable
Ceiling		Concrete (precast)			C	Y						V0000	Non-Asbestos		None	
Floor		Mastic			D	N		100			%	V9500	Presumed Asbestos		Presumed Asbestos	NF
Floor		Vinyl Floor Tile (No Mastic), 12x12 Bright Blue Dense Fleck			A	Y						V0000	Non-Asbestos		None	
Wall		Masonry			A	Y						V0000	Non-Asbestos		None	

# ALL DATA REPORT

**Client:** Hamilton-Wentworth Catholic District Sch  
**Location:** #115 : Foyer  
**Survey Date:** 2018-07-17

**Site:** Elementary  
**Floor:** 1

**Building Name:** Our Lady of Lourdes  
**Room #:**  
**Last Re-Assessment:** 2022-05-11

**Area (sqft):** 0

ASBESTOS																
System	Component	Material	Item	Covering	A*	V*	AP*	Good	Fair	Poor	Unit	Sample	Asbestos Type	Amount	Hazard	Friable
Ceiling		Ceiling Tiles (lay-in), 2x4 Wide Fissure Random Pinhole			C	Y						V0003	None Detected		None	
Floor		Ceramic Tiles			A	Y						V0000	Non-Asbestos		None	
Wall		Masonry			A	Y						V0000	Non-Asbestos		None	

**Client:** Hamilton-Wentworth Catholic District Sch  
**Location:** #116 : Corridor  
**Survey Date:** 2018-07-17

**Site:** Elementary  
**Floor:** 1

**Building Name:** Our Lady of Lourdes  
**Room #:**  
**Last Re-Assessment:** 2022-05-11

**Area (sqft):** 0

ASBESTOS																
System	Component	Material	Item	Covering	A*	V*	AP*	Good	Fair	Poor	Unit	Sample	Asbestos Type	Amount	Hazard	Friable
Ceiling		Ceiling Tiles (lay-in), 2x4 Wide Fissure Random Pinhole			C	Y						V0003	None Detected		None	
Floor		Ceramic Tiles			A	Y						V0000	Non-Asbestos		None	
Piping		Polyvinyl chloride (PVC)	Insulation	Fibreglass	C	N						V0000	Non-Asbestos		None	
Wall		Masonry			A	Y						V0000	Non-Asbestos		None	

# ALL DATA REPORT

**Client:** Hamilton-Wentworth Catholic District Sch  
**Location:** #117 : Boiler Room  
**Survey Date:** 2018-07-17

**Site:** Elementary  
**Floor:** 1

**Building Name:** Our Lady of Lourdes  
**Room #:**  
**Last Re-Assessment:** 2022-05-11

**Area (sqft):** 0

ASBESTOS																
System	Component	Material	Item	Covering	A*	V*	AP*	Good	Fair	Poor	Unit	Sample	Asbestos Type	Amount	Hazard	Friable
Ceiling		Concrete (precast)			C	Y						V0000	Non-Asbestos		None	
Floor		Concrete (poured)			A	Y						V0000	Non-Asbestos		None	
Piping		Polyvinyl chloride (PVC)	Insulation	Fibreglass	C	N						V0000	Non-Asbestos		None	
Wall		Masonry			A	Y						V0000	Non-Asbestos		None	

**Client:** Hamilton-Wentworth Catholic District Sch  
**Location:** #118 : Staff Room  
**Survey Date:** 2018-07-17

**Site:** Elementary  
**Floor:** 1

**Building Name:** Our Lady of Lourdes  
**Room #:**  
**Last Re-Assessment:** 2022-05-11

**Area (sqft):** 0

ASBESTOS																
System	Component	Material	Item	Covering	A*	V*	AP*	Good	Fair	Poor	Unit	Sample	Asbestos Type	Amount	Hazard	Friable
Ceiling		Ceiling Tiles (lay-in), 2x4 Long Fissure Random Pinhole			C	Y						S0005	None Detected		None	
Floor		Mastic, sampled AGAT 16H230171			D	N						V0000	Non-Asbestos		None	
Floor		Vinyl Floor Tile (No Mastic), 12x12 Grey w White and Black Dense Fleck, previously sampled AGAT 17H230171			A	Y						V0000	Non-Asbestos		None	
Piping		Fibreglass	Insulation	Polyvinyl chloride (PVC)	C	N						V0000	Non-Asbestos		None	
Wall		Drywall and joint compound			A	Y						V0011	None Detected		None	

# ALL DATA REPORT

**Client:** Hamilton-Wentworth Catholic District Sch  
**Location:** #119 : Girls Washroom  
**Survey Date:** 2018-07-17

**Site:** Elementary  
**Floor:** 1

**Building Name:** Our Lady of Lourdes  
**Room #:**  
**Last Re-Assessment:** 2022-05-11

**Area (sqft):** 0

ASBESTOS																
System	Component	Material	Item	Covering	A*	V*	AP*	Good	Fair	Poor	Unit	Sample	Asbestos Type	Amount	Hazard	Friable
Ceiling		Concrete (precast)			C	Y						V0000	Non-Asbestos		None	
Floor		Terrazzo			A	Y						V0000	Non-Asbestos		None	
Piping		Fibreglass	Insulation		C	Y						V0000	Non-Asbestos		None	
Piping		Parging Cement	Fitting		C	Y		6			EA	S0016C	Chrysotile	>75%	Confirmed Asbestos	F
Wall		Masonry			A	Y						V0000	Non-Asbestos		None	

**Client:** Hamilton-Wentworth Catholic District Sch  
**Location:** #120 : Boys Washroom  
**Survey Date:** 2018-07-17

**Site:** Elementary  
**Floor:** 1

**Building Name:** Our Lady of Lourdes  
**Room #:**  
**Last Re-Assessment:** 2022-05-11

**Area (sqft):** 0

ASBESTOS																
System	Component	Material	Item	Covering	A*	V*	AP*	Good	Fair	Poor	Unit	Sample	Asbestos Type	Amount	Hazard	Friable
Ceiling		Concrete (precast)			C	Y						V0000	Non-Asbestos		None	
Floor		Terrazzo			A	Y						V0000	Non-Asbestos		None	
Piping		Fibreglass	Insulation		C	Y						V0000	Non-Asbestos		None	
Piping		Parging Cement	Fitting		C	Y		3			EA	V0016	Chrysotile	>75%	Confirmed Asbestos	F
Wall		Masonry			A	Y										



# ALL DATA REPORT

**Client:** Hamilton-Wentworth Catholic District Sch  
**Location:** #121 : Staff Room  
**Survey Date:** 2018-07-17

**Site:** Elementary  
**Floor:** 1

**Building Name:** Our Lady of Lourdes  
**Room #:**  
**Last Re-Assessment:** 2022-05-11

**Area (sqft):** 0

ASBESTOS																
System	Component	Material	Item	Covering	A*	V*	AP*	Good	Fair	Poor	Unit	Sample	Asbestos Type	Amount	Hazard	Friable
Floor		Mastic			D	N		100			%	V9500	Presumed Asbestos		Presumed Asbestos	NF
Floor		Vinyl Floor Tile (No Mastic), 12x12 Black			A	Y		100			%	V9500	Presumed Asbestos		Presumed Asbestos	NF
Floor		Vinyl Floor Tile (No Mastic), 12x12 White w Black Fleck			A	Y		100			%	V9500	Presumed Asbestos		Presumed Asbestos	NF
Piping		Polyvinyl chloride (PVC)	Insulation	Fibreglass	C	N						V0000	Non-Asbestos		None	
Wall		Drywall and joint compound			A	Y		100			%	V0011	None Detected		None	
Wall		Masonry			A	Y						V0000	Non-Asbestos		None	

# ALL DATA REPORT

**Client:** Hamilton-Wentworth Catholic District Sch  
**Location:** #122 : Classroom 7  
**Survey Date:** 2018-07-17

**Site:** Elementary  
**Floor:** 1

**Building Name:** Our Lady of Lourdes  
**Room #:**  
**Last Re-Assessment:** 2022-05-11

**Area (sqft):** 0

ASBESTOS																
System	Component	Material	Item	Covering	A*	V*	AP*	Good	Fair	Poor	Unit	Sample	Asbestos Type	Amount	Hazard	Friable
Ceiling		Concrete (precast)			C	Y						V0000	Non-Asbestos		None	
Floor		Mastic			D	N		100			%	V9500	Presumed Asbestos		Presumed Asbestos	NF
Floor		Vinyl Floor Tile (No Mastic), 12x12 Pink and Red Dense Fleck			A	Y		100			%	V9500	Presumed Asbestos		Presumed Asbestos	NF
Piping		Polyvinyl chloride (PVC)	Insulation	Fibreglass	C	N						V0000	Non-Asbestos		None	
Wall		Masonry			A	Y						V0000	Non-Asbestos		None	

**Client:** Hamilton-Wentworth Catholic District Sch  
**Location:** #123 : Classroom 5  
**Survey Date:** 2018-07-17

**Site:** Elementary  
**Floor:** 1

**Building Name:** Our Lady of Lourdes  
**Room #:**  
**Last Re-Assessment:** 2022-05-11

**Area (sqft):** 0

ASBESTOS																
System	Component	Material	Item	Covering	A*	V*	AP*	Good	Fair	Poor	Unit	Sample	Asbestos Type	Amount	Hazard	Friable
Ceiling		Concrete (precast)			C	Y						V0000	Non-Asbestos		None	
Floor		Mastic			D	N		100			%	V9500	Presumed Asbestos		Presumed Asbestos	NF
Floor		Vinyl Floor Tile (No Mastic), 12x12 White w Black Fleck			A	Y		100			%	V9500	Presumed Asbestos		Presumed Asbestos	NF
Piping		Polyvinyl chloride (PVC)	Insulation	Fibreglass	C	N						V0000	Non-Asbestos		None	
Wall		Masonry			A	Y						V0000	Non-Asbestos		None	

# ALL DATA REPORT

**Client:** Hamilton-Wentworth Catholic District Sch  
**Location:** #124 : Classroom 6  
**Survey Date:** 2018-07-17

**Site:** Elementary  
**Floor:** 1

**Building Name:** Our Lady of Lourdes  
**Room #:**  
**Last Re-Assessment:** 2022-05-11

**Area (sqft):** 0

ASBESTOS																
System	Component	Material	Item	Covering	A*	V*	AP*	Good	Fair	Poor	Unit	Sample	Asbestos Type	Amount	Hazard	Friable
Ceiling		Concrete (precast)			C	Y						V0000	Non-Asbestos		None	
Floor		Mastic			D	N		100			%	V9500	Presumed Asbestos		Presumed Asbestos	NF
Floor		Vinyl Floor Tile (No Mastic), 12x12 Pink and Red Dense Fleck			A	Y		100			%	V9500	Presumed Asbestos		Presumed Asbestos	NF
Piping		Polyvinyl chloride (PVC)	Insulation	Fibreglass	C	N						V0000	Non-Asbestos		None	
Wall		Masonry			A	Y						V0000	Non-Asbestos		None	

**Client:** Hamilton-Wentworth Catholic District Sch  
**Location:** #125 : Classroom 4  
**Survey Date:** 2018-07-17

**Site:** Elementary  
**Floor:** 1

**Building Name:** Our Lady of Lourdes  
**Room #:**  
**Last Re-Assessment:** 2022-05-11

**Area (sqft):** 0

ASBESTOS																
System	Component	Material	Item	Covering	A*	V*	AP*	Good	Fair	Poor	Unit	Sample	Asbestos Type	Amount	Hazard	Friable
Ceiling		Concrete (precast)			C	Y						V0000	Non-Asbestos		None	
Floor		Mastic			D	N		100			%	V9500	Presumed Asbestos		Presumed Asbestos	NF
Floor		Vinyl Floor Tile (No Mastic), 12x12 White with Black Fleck			A	Y		100			%	V9500	Presumed Asbestos		Presumed Asbestos	NF
Piping		Parging Cement	Fitting		C	Y		2			EA	V0016	Chrysotile	>75%	Confirmed Asbestos	F
Wall		Masonry			A	Y						V0000	Non-Asbestos		None	

# ALL DATA REPORT

**Client:** Hamilton-Wentworth Catholic District Sch  
**Location:** #126 : Corridor  
**Survey Date:** 2018-07-17

**Site:** Elementary  
**Floor:** 1

**Building Name:** Our Lady of Lourdes  
**Room #:**  
**Last Re-Assessment:** 2022-05-11

**Area (sqft):** 0

ASBESTOS																
System	Component	Material	Item	Covering	A*	V*	AP*	Good	Fair	Poor	Unit	Sample	Asbestos Type	Amount	Hazard	Friable
Ceiling		Ceiling Tiles (lay-in), 2x4 Wide Fissure Random Pinhole			C	Y						V0003	None Detected		None	
Floor		Ceramic Tiles			A	Y						V0000	Non-Asbestos		None	
Wall		Masonry			A	Y						V0000	Non-Asbestos		None	

**Client:** Hamilton-Wentworth Catholic District Sch  
**Location:** #127 : Foyer  
**Survey Date:** 2018-07-17

**Site:** Elementary  
**Floor:** 1

**Building Name:** Our Lady of Lourdes  
**Room #:**  
**Last Re-Assessment:** 2022-05-11

**Area (sqft):** 0

ASBESTOS																
System	Component	Material	Item	Covering	A*	V*	AP*	Good	Fair	Poor	Unit	Sample	Asbestos Type	Amount	Hazard	Friable
Ceiling		Ceiling Tiles (lay-in), 2x4 Short Fissure Random Pinhole			C	Y						V0004	None Detected		None	
Floor		Ceramic Tiles			A	Y						V0000	Non-Asbestos		None	
Wall		Masonry			A	Y						V0000	Non-Asbestos		None	

ALL DATA REPORT

**Client:** Hamilton-Wentworth Catholic District Sch  
**Location:** #128 : Classroom 3  
**Survey Date:** 2018-07-17

**Site:** Elementary  
**Floor:** 1

**Building Name:** Our Lady of Lourdes  
**Room #:**  
**Last Re-Assessment:** 2022-05-11

**Area (sqft):** 0

ASBESTOS																
System	Component	Material	Item	Covering	A*	V*	AP*	Good	Fair	Poor	Unit	Sample	Asbestos Type	Amount	Hazard	Friable
Ceiling		Concrete (precast)			C	Y						V0000	Non-Asbestos		None	
Floor		Mastic			D	N		100			%	V0000	Non-Asbestos		None	
Floor		Vinyl Floor Tile (No Mastic), 12x12 Cream with White Fleck			A	Y						V0000	Non-Asbestos		None	
Wall		Masonry			A	Y						V0000	Non-Asbestos		None	

**Client:** Hamilton-Wentworth Catholic District Sch  
**Location:** #129 : Storage  
**Survey Date:** 2018-07-17

**Site:** Elementary  
**Floor:** 1

**Building Name:** Our Lady of Lourdes  
**Room #:**  
**Last Re-Assessment:** 2022-05-11

**Area (sqft):** 0

ASBESTOS																
System	Component	Material	Item	Covering	A*	V*	AP*	Good	Fair	Poor	Unit	Sample	Asbestos Type	Amount	Hazard	Friable
Ceiling		Concrete (precast)			C	Y						V0000	Non-Asbestos		None	
Floor		Mastic			D	N		100				V0000	Non-Asbestos		None	
Floor		Vinyl Floor Tile (No Mastic), 9x9 Beige with Grey, Yellow and Brown Streak			A	Y		100			%	V9000	Confirmed Asbestos		Confirmed Asbestos	NF
Other	Light Fixture	Paper			C	Y		2			EA	V9500	Presumed Asbestos		Presumed Asbestos	NF
Wall		Masonry			A	Y						V0000	Non-Asbestos		None	

# ALL DATA REPORT

**Client:** Hamilton-Wentworth Catholic District Sch  
**Location:** #130 : Foyer  
**Survey Date:** 2018-07-17

**Site:** Elementary  
**Floor:** 1

**Building Name:** Our Lady of Lourdes  
**Room #:**  
**Last Re-Assessment:** 2022-05-11

**Area (sqft):** 0

ASBESTOS																
System	Component	Material	Item	Covering	A*	V*	AP*	Good	Fair	Poor	Unit	Sample	Asbestos Type	Amount	Hazard	Friable
Ceiling		Ceiling Tiles (lay-in), 2x4 Short Fissure Random Pinhole			C	Y						V0004	None Detected		None	
Floor		Ceramic Tiles			A	Y						V0000	Non-Asbestos		None	
Wall		Masonry			A	Y						V0000	Non-Asbestos		None	

**Client:** Hamilton-Wentworth Catholic District Sch  
**Location:** #131 : Classroom 2  
**Survey Date:** 2018-07-17

**Site:** Elementary  
**Floor:** 1

**Building Name:** Our Lady of Lourdes  
**Room #:**  
**Last Re-Assessment:** 2022-05-11

**Area (sqft):** 0

ASBESTOS																
System	Component	Material	Item	Covering	A*	V*	AP*	Good	Fair	Poor	Unit	Sample	Asbestos Type	Amount	Hazard	Friable
Ceiling		Concrete (precast)			C	Y						V0000	Non-Asbestos		None	
Floor		Ceramic Tiles			A	Y						V0000	Non-Asbestos		None	
Floor		Mastic			D	N		100			%	V0000	Non-Asbestos		None	
Floor		Vinyl Floor Tile (No Mastic), 12x12 Cream with White Fleck			A	Y						V0000	Non-Asbestos		None	
Piping		Fibreglass	Insulation	Polyvinyl chloride (PVC)	C	N						V0000	Non-Asbestos		None	
Wall		Masonry			A	Y						V0000	Non-Asbestos		None	

ALL DATA REPORT

**Client:** Hamilton-Wentworth Catholic District Sch  
**Location:** #132 : Classroom 1  
**Survey Date:** 2018-07-17

**Site:** Elementary  
**Floor:** 1

**Building Name:** Our Lady of Lourdes  
**Room #:**  
**Last Re-Assessment:** 2022-05-11

**Area (sqft):** 0

ASBESTOS																
System	Component	Material	Item	Covering	A*	V*	AP*	Good	Fair	Poor	Unit	Sample	Asbestos Type	Amount	Hazard	Friable
Ceiling		Concrete (precast)			C	Y						V0000	Non-Asbestos		None	
Floor		Mastic			D	N						V0000	Non-Asbestos		None	
Floor		Vinyl Floor Tile (No Mastic), 12x12 Cream with White Fleck			A	Y						V0000	Non-Asbestos		None	
Wall		Masonry			A	Y						V0000	Non-Asbestos		None	

**Client:** Hamilton-Wentworth Catholic District Sch  
**Location:** #133 : Principal Office  
**Survey Date:** 2018-07-17

**Site:** Elementary  
**Floor:** 1

**Building Name:** Our Lady of Lourdes  
**Room #:**  
**Last Re-Assessment:** 2022-05-11

**Area (sqft):** 0

ASBESTOS																
System	Component	Material	Item	Covering	A*	V*	AP*	Good	Fair	Poor	Unit	Sample	Asbestos Type	Amount	Hazard	Friable
Ceiling		Ceiling Tiles (lay-in), 1x1 Small Fissure Large Pinhole			C	Y						S0006	None Detected		None	
Floor		Vinyl Floor Tile and Mastic, 12x12 blue with black and white fleck			A	Y		100			%	V9500	Presumed Asbestos		Presumed Asbestos	NF
Wall		Wood, Paneling			A	Y						V0000	Non-Asbestos		None	

# ALL DATA REPORT

**Client:** Hamilton-Wentworth Catholic District Sch  
**Location:** #134 : Janitor  
**Survey Date:** 2018-07-17

**Site:** Elementary  
**Floor:** 1

**Building Name:** Our Lady of Lourdes  
**Room #:**  
**Last Re-Assessment:** 2022-05-11

**Area (sqft):** 0

ASBESTOS																
System	Component	Material	Item	Covering	A*	V*	AP*	Good	Fair	Poor	Unit	Sample	Asbestos Type	Amount	Hazard	Friable
Ceiling		Abated Material													[Abated]	
Floor		Laminate			A	Y		100			%					
Floor		Mastic			D	N		100			%	V9500	Presumed Asbestos		Presumed Asbestos	NF
Piping		Parging Cement	Fitting		C	Y		2			EA	V0016	Chrysotile	>75%	Confirmed Asbestos	F
Structure	Beam Deck Joist	Steel			C	Y						V0000	Non-Asbestos		None	
Wall		Masonry			A	Y						V0000	Non-Asbestos		None	

**Client:** Hamilton-Wentworth Catholic District Sch  
**Location:** #135 : Stairs  
**Survey Date:** 2018-07-17

**Site:** Elementary  
**Floor:** 1

**Building Name:** Our Lady of Lourdes  
**Room #:**  
**Last Re-Assessment:** 2022-05-11

**Area (sqft):** 0

ASBESTOS																
System	Component	Material	Item	Covering	A*	V*	AP*	Good	Fair	Poor	Unit	Sample	Asbestos Type	Amount	Hazard	Friable
Floor		Mastic			D	N		100			%	V9500	Presumed Asbestos		Presumed Asbestos	NF
Floor		Vinyl Floor Tile (No Mastic), 12x12 Pink and Red Dense Fleck			A	Y		100			%	V9500	Presumed Asbestos		Presumed Asbestos	NF
Structure	Beam Deck Joist	Steel			C	Y						V0000	Non-Asbestos		None	
Wall		Masonry			A	Y						V0000	Non-Asbestos		None	



# ALL DATA REPORT

**Client:** Hamilton-Wentworth Catholic District Sch  
**Location:** #136 : Girls Washroom  
**Survey Date:** 2018-07-17

**Site:** Elementary  
**Floor:** 1

**Building Name:** Our Lady of Lourdes  
**Room #:**  
**Last Re-Assessment:** 2022-05-11

**Area (sqft):** 0

ASBESTOS																
System	Component	Material	Item	Covering	A*	V*	AP*	Good	Fair	Poor	Unit	Sample	Asbestos Type	Amount	Hazard	Friable
Ceiling		Ceiling Tiles (lay-in), 2x4 Long Fissure Random Pinhole			C	Y						V0005	None Detected		None	
Floor		Terrazzo			A	Y						V0000	Non-Asbestos		None	
Piping		Polyvinyl chloride (PVC)	Insulation	Fibreglass	C	N						V0000	Non-Asbestos		None	
Wall		Masonry			A	Y						V0000	Non-Asbestos		None	

**Client:** Hamilton-Wentworth Catholic District Sch  
**Location:** #137 : Boys Washroom  
**Survey Date:** 2018-07-17

**Site:** Elementary  
**Floor:** 1

**Building Name:** Our Lady of Lourdes  
**Room #:**  
**Last Re-Assessment:** 2022-05-11

**Area (sqft):** 0

ASBESTOS																
System	Component	Material	Item	Covering	A*	V*	AP*	Good	Fair	Poor	Unit	Sample	Asbestos Type	Amount	Hazard	Friable
Ceiling		Ceiling Tiles (lay-in), 2x4 Long Fissure Random Pinhole			C	Y						V0005	None Detected		None	
Floor		Terrazzo			A	Y						V0000	Non-Asbestos		None	
Piping		Polyvinyl chloride (PVC)	Insulation	Fibreglass	C	N						V0000	Non-Asbestos		None	
Wall		Masonry			A	Y						V0000	Non-Asbestos		None	

# ALL DATA REPORT

**Client:** Hamilton-Wentworth Catholic District Sch  
**Location:** #138 : Classroom 14  
**Survey Date:** 2018-07-17

**Site:** Elementary  
**Floor:** 1

**Building Name:** Our Lady of Lourdes  
**Room #:**  
**Last Re-Assessment:** 2022-05-11

**Area (sqft):** 0

ASBESTOS																
System	Component	Material	Item	Covering	A*	V*	AP*	Good	Fair	Poor	Unit	Sample	Asbestos Type	Amount	Hazard	Friable
Floor		Concrete (poured)			A	Y						V0000	Non-Asbestos		None	
Floor		Vinyl Floor Tile and Mastic, 12x12 grey oatmeal			A	Y						V0000	Non-Asbestos		None	
Floor		Mastic			D	N		100			%	V0000	Non-Asbestos		None	
Structure	Beam, Deck	Steel			C	Y						V0000	Non-Asbestos		None	
Wall		Masonry			A	Y						V0000	Non-Asbestos		None	

**Client:** Hamilton-Wentworth Catholic District Sch  
**Location:** #139 : Corridor  
**Survey Date:** 2018-07-17

**Site:** Elementary  
**Floor:** 1

**Building Name:** Our Lady of Lourdes  
**Room #:**  
**Last Re-Assessment:** 2022-05-11

**Area (sqft):** 0

ASBESTOS																
System	Component	Material	Item	Covering	A*	V*	AP*	Good	Fair	Poor	Unit	Sample	Asbestos Type	Amount	Hazard	Friable
Ceiling		Ceiling Tiles (lay-in), 2x4 Wide Fissure Random Pinhole			C	Y						V0003	None Detected		None	
Floor		Ceramic Tiles			A	Y						V0000	Non-Asbestos		None	
Wall		Masonry			A	Y						V0000	Non-Asbestos		None	

ALL DATA REPORT

**Client:** Hamilton-Wentworth Catholic District Sch  
**Location:** #140 : Classroom 15  
**Survey Date:** 2018-07-17

**Site:** Elementary  
**Floor:** 1

**Building Name:** Our Lady of Lourdes  
**Room #:**  
**Last Re-Assessment:** 2022-05-11

**Area (sqft):** 0

ASBESTOS																
System	Component	Material	Item	Covering	A*	V*	AP*	Good	Fair	Poor	Unit	Sample	Asbestos Type	Amount	Hazard	Friable
Floor		Mastic			D	N		100			%	V9500	Presumed Asbestos		Presumed Asbestos	NF
Floor		Vinyl Floor Tile (No Mastic), 12x12 Pink and Red Dense Fleck			A	Y		100			%	V9500	Presumed Asbestos		Presumed Asbestos	NF
Wall		Masonry			A	Y						V0000	Non-Asbestos		None	

**Client:** Hamilton-Wentworth Catholic District Sch  
**Location:** #141 : Unknown  
**Survey Date:** 2018-07-17

**Site:** Elementary  
**Floor:** 1

**Building Name:** Our Lady of Lourdes  
**Room #:**  
**Last Re-Assessment:** 2022-05-11

**Area (sqft):** 0

ASBESTOS																
System	Component	Material	Item	Covering	A*	V*	AP*	Good	Fair	Poor	Unit	Sample	Asbestos Type	Amount	Hazard	Friable
Floor		Mastic			D	N		100			%	V9500	Presumed Asbestos		Presumed Asbestos	NF
Floor		Vinyl Floor Tile (No Mastic), 12x12 Beige w Grey and Pink Fleck			A	Y		97	3		%	V9500	Presumed Asbestos		Presumed Asbestos	NF
Wall		Masonry			A	Y						V0000	Non-Asbestos		None	

# ALL DATA REPORT

**Client:** Hamilton-Wentworth Catholic District Sch  
**Location:** #142 : Classroom 17  
**Survey Date:** 2018-07-17

**Site:** Elementary  
**Floor:** 1

**Building Name:** Our Lady of Lourdes  
**Room #:**  
**Last Re-Assessment:** 2022-05-11

**Area (sqft):** 0

ASBESTOS																
System	Component	Material	Item	Covering	A*	V*	AP*	Good	Fair	Poor	Unit	Sample	Asbestos Type	Amount	Hazard	Friable
Floor		Mastic			D	N		100			%	V9500	Presumed Asbestos		Presumed Asbestos	NF
Floor		Vinyl Floor Tile (No Mastic), 12x12 Pink and Red Dense Fleck			A	Y		100			%	V9500	Presumed Asbestos		Presumed Asbestos	NF
Piping		Parging Cement	Fitting		C	Y		4			EA	V0016	Chrysotile	>75%	Confirmed Asbestos	F
Wall		Masonry			A	Y						V0000	Non-Asbestos		None	

**Client:** Hamilton-Wentworth Catholic District Sch  
**Location:** #143 : Stairs  
**Survey Date:** 2018-07-17

**Site:** Elementary  
**Floor:** 1

**Building Name:** Our Lady of Lourdes  
**Room #:**  
**Last Re-Assessment:** 2022-05-11

**Area (sqft):** 0

ASBESTOS																
System	Component	Material	Item	Covering	A*	V*	AP*	Good	Fair	Poor	Unit	Sample	Asbestos Type	Amount	Hazard	Friable
Ceiling		Ceiling Tiles (lay-in), 2x4 Large Pinhole			C	Y						V0002	None Detected		None	
Floor		Ceramic Tiles			A	Y						V0000	Non-Asbestos		None	
Wall		Masonry			A	Y						V0000	Non-Asbestos		None	

ALL DATA REPORT

**Client:** Hamilton-Wentworth Catholic District Sch  
**Location:** #144 : Gym Entrance  
**Survey Date:** 2018-07-17

**Site:** Elementary  
**Floor:** 1

**Building Name:** Our Lady of Lourdes  
**Room #:**  
**Last Re-Assessment:** 2022-05-11

**Area (sqft):** 0

ASBESTOS																
System	Component	Material	Item	Covering	A*	V*	AP*	Good	Fair	Poor	Unit	Sample	Asbestos Type	Amount	Hazard	Friable
Ceiling		Ceiling Tiles (lay-in), 2x4 Short Fissure Random Pinhole			C	Y						S0014	None Detected		None	
Floor		Mastic			D	N		100			%	V9500	Presumed Asbestos		Presumed Asbestos	NF
Floor		Vinyl Floor Tile (No Mastic), 12x12 Cream w White Fleck			A	Y						V0000	Non-Asbestos		None	
Wall		Masonry			A	Y						V0000	Non-Asbestos		None	

**Client:** Hamilton-Wentworth Catholic District Sch  
**Location:** #145 : Foyer  
**Survey Date:** 2018-07-17

**Site:** Elementary  
**Floor:** 1

**Building Name:** Our Lady of Lourdes  
**Room #:**  
**Last Re-Assessment:** 2022-05-11

**Area (sqft):** 0

ASBESTOS																
System	Component	Material	Item	Covering	A*	V*	AP*	Good	Fair	Poor	Unit	Sample	Asbestos Type	Amount	Hazard	Friable
Ceiling		Ceiling Tiles (lay-in), 2x2 Short Fissure Random Pinhole (date stamp 2000)			C	Y						V0000	Non-Asbestos		None	
Floor		Ceramic Tiles			A	Y						V0000	Non-Asbestos		None	
Wall		Masonry			A	Y						V0000	Non-Asbestos		None	

ALL DATA REPORT

**Client:** Hamilton-Wentworth Catholic District Sch  
**Location:** #146 : Gym  
**Survey Date:** 2018-07-17

**Site:** Elementary  
**Floor:** 1

**Building Name:** Our Lady of Lourdes  
**Room #:**  
**Last Re-Assessment:** 2022-05-11

**Area (sqft):** 0

ASBESTOS																
System	Component	Material	Item	Covering	A*	V*	AP*	Good	Fair	Poor	Unit	Sample	Asbestos Type	Amount	Hazard	Friable
Floor		Mastic			D	N						V9500	Presumed Asbestos		Presumed Asbestos	NF
Floor		Vinyl Floor Tile (No Mastic), 12x12 Cream w White Fleck			A	Y						V0000	Non-Asbestos		None	
Floor		Vinyl Floor Tile (No Mastic), 12x12 Bright Blue Dense Fleck			A	Y						V0000	Non-Asbestos		None	
Structure	Beam Deck Joist	Steel			C	Y						V0000	Non-Asbestos		None	
Wall		Masonry			A	Y						V0000	Non-Asbestos		None	

**Client:** Hamilton-Wentworth Catholic District Sch  
**Location:** #147 : Gym Storage  
**Survey Date:** 2018-07-17

**Site:** Elementary  
**Floor:** 1

**Building Name:** Our Lady of Lourdes  
**Room #:**  
**Last Re-Assessment:** 2022-05-11

**Area (sqft):** 0

ASBESTOS																
System	Component	Material	Item	Covering	A*	V*	AP*	Good	Fair	Poor	Unit	Sample	Asbestos Type	Amount	Hazard	Friable
Floor		Concrete (poured)			A	Y						V0000	Non-Asbestos		None	
Piping		Polyvinyl chloride (PVC)	Insulation	Fibreglass	C	N						V0000	Non-Asbestos		None	
Piping	Rain Water Leader	Cement Product			C	Y		100			%	V9500	Presumed Asbestos		Presumed Asbestos	NF
Structure	Beam Deck Joist	Steel			C	Y						V0000	Non-Asbestos		None	
Wall		Masonry			A	Y						V0000	Non-Asbestos		None	

# ALL DATA REPORT

**Client:** Hamilton-Wentworth Catholic District Sch  
**Location:** #148 : Change Room  
**Survey Date:** 2018-07-17

**Site:** Elementary  
**Floor:** 1

**Building Name:** Our Lady of Lourdes  
**Room #:**  
**Last Re-Assessment:** 2022-05-11

**Area (sqft):** 0

ASBESTOS																
System	Component	Material	Item	Covering	A*	V*	AP*	Good	Fair	Poor	Unit	Sample	Asbestos Type	Amount	Hazard	Friable
Ceiling		Ceiling Tiles (lay-in), 2x2 Short Fissure Random Pinhole (date stamp 2000)			C	Y		100			%	V0000	Non-Asbestos		None	
Floor		Ceramic Tiles			A	Y						V0000	Non-Asbestos		None	
Floor		Mastic			D	N		100			%	V9500	Presumed Asbestos		Presumed Asbestos	NF
Floor		Vinyl Floor Tile (No Mastic), 12x12 Grey Dense Fleck			A	Y		100			%	V9500	Presumed Asbestos		Presumed Asbestos	NF
Floor		Vinyl Floor Tile (No Mastic), 12x12 Green Dense Fleck			A	Y		100			%	V9500	Presumed Asbestos		Presumed Asbestos	NF
Wall		Masonry			A	Y						V0000	Non-Asbestos		None	

# ALL DATA REPORT

**Client:** Hamilton-Wentworth Catholic District Sch  
**Location:** #149 : Change Room  
**Survey Date:** 2018-07-17

**Site:** Elementary  
**Floor:** 1

**Building Name:** Our Lady of Lourdes  
**Room #:**  
**Last Re-Assessment:** 2022-05-11

**Area (sqft):** 0

ASBESTOS																
System	Component	Material	Item	Covering	A*	V*	AP*	Good	Fair	Poor	Unit	Sample	Asbestos Type	Amount	Hazard	Friable
Ceiling		Ceiling Tiles (lay-in), 2x2 Short Fissure Random Pinhole (date stamp 2000)			C	Y						V0000	Non-Asbestos		None	
Floor		Ceramic Tiles			A	Y						V0000	Non-Asbestos		None	
Floor		Mastic			D	N		100			%	V9500	Presumed Asbestos		Presumed Asbestos	NF
Floor		Vinyl Floor Tile (No Mastic), 12x12 Grey Dense Fleck			A	Y		100			%	V9500	Presumed Asbestos		Presumed Asbestos	NF
Floor		Vinyl Floor Tile (No Mastic), 12x12 Green Dense Fleck			A	Y		100			%	V9500	Presumed Asbestos		Presumed Asbestos	NF
Wall		Masonry			A	Y						V0000	Non-Asbestos		None	



# ALL DATA REPORT

**Client:** Hamilton-Wentworth Catholic District Sch  
**Location:** #200 : Staff Room  
**Survey Date:** 2018-07-17

**Site:** Elementary  
**Floor:** 2

**Building Name:** Our Lady of Lourdes  
**Room #:**  
**Last Re-Assessment:** 2022-05-11

**Area (sqft):** 0

ASBESTOS																
System	Component	Material	Item	Covering	A*	V*	AP*	Good	Fair	Poor	Unit	Sample	Asbestos Type	Amount	Hazard	Friable
Ceiling		Ceiling Tiles (lay-in), 2x4 Textured Pinhole			C	Y						V0001	None Detected		None	
Floor		Mastic			D	N						V0000	Non-Asbestos		None	
Floor		Vinyl Floor Tile (No Mastic), 9x9 White w Black Streak			A	Y		100			%	V0013	Asbestos Containing	0.5-5%	Confirmed Asbestos	NF
Wall		Masonry			A	Y						V0000	Non-Asbestos		None	

**Client:** Hamilton-Wentworth Catholic District Sch  
**Location:** #201 : Kindergarten  
**Survey Date:** 2018-07-17

**Site:** Elementary  
**Floor:** 2

**Building Name:** Our Lady of Lourdes  
**Room #:**  
**Last Re-Assessment:** 2022-05-11

**Area (sqft):** 0

ASBESTOS																
System	Component	Material	Item	Covering	A*	V*	AP*	Good	Fair	Poor	Unit	Sample	Asbestos Type	Amount	Hazard	Friable
Ceiling		Ceiling Tiles (lay-in), 2x4 Large Pinhole			C	Y						V0002	None Detected		None	
Floor		Mastic			D	N		100			%	V9500	Presumed Asbestos		Presumed Asbestos	NF
Floor		Vinyl Floor Tile (No Mastic), 12x12 Pink Dense Fleck			A	Y		100			%	V9500	Presumed Asbestos		Presumed Asbestos	NF
Wall		Masonry			A	Y						V0000	Non-Asbestos		None	

ALL DATA REPORT

**Client:** Hamilton-Wentworth Catholic District Sch  
**Location:** #202 : Stairs  
**Survey Date:** 2018-07-17

**Site:** Elementary  
**Floor:** 2

**Building Name:** Our Lady of Lourdes  
**Room #:**  
**Last Re-Assessment:** 2022-05-11

**Area (sqft):** 0

ASBESTOS																
System	Component	Material	Item	Covering	A*	V*	AP*	Good	Fair	Poor	Unit	Sample	Asbestos Type	Amount	Hazard	Friable
Ceiling		Ceiling Tiles (lay-in), 2x4 Large Pinhole			C	Y						V0002	None Detected		None	
Floor		Mastic			D	N		100			%	V9500	Presumed Asbestos		Presumed Asbestos	NF
Floor		Vinyl Floor Tile (No Mastic), 9x9 Beige w Tan Streak			A	Y		100			%	V9500	Presumed Asbestos		Presumed Asbestos	NF
Wall		Masonry			A	Y						V0000	Non-Asbestos		None	

**Client:** Hamilton-Wentworth Catholic District Sch  
**Location:** #203 : Corridor  
**Survey Date:** 2018-07-17

**Site:** Elementary  
**Floor:** 2

**Building Name:** Our Lady of Lourdes  
**Room #:**  
**Last Re-Assessment:** 2022-05-11

**Area (sqft):** 0

ASBESTOS																
System	Component	Material	Item	Covering	A*	V*	AP*	Good	Fair	Poor	Unit	Sample	Asbestos Type	Amount	Hazard	Friable
Ceiling		Ceiling Tiles (lay-in), 2x4 Textured Pinhole			C	Y						S0001	None Detected		None	
Ceiling		Ceiling Tiles (lay-in), 2x4 Large Pinhole			C	Y						S0002	None Detected		None	
Floor		Mastic			D	N						V0000	Non-Asbestos		None	
Floor		Vinyl Floor Tile (No Mastic), 9x9 Beige w Tan Streak			A	Y		100			%	V9500	Presumed Asbestos		Presumed Asbestos	NF
Floor		Vinyl Floor Tile (No Mastic), 9x9 Tan w Brown and White Streak			A	Y		100			%	V9000	Confirmed Asbestos		Confirmed Asbestos	NF
Wall		Masonry			A	Y						V0000	Non-Asbestos		None	

# ALL DATA REPORT

**Client:** Hamilton-Wentworth Catholic District Sch  
**Location:** #204 : Unknown  
**Survey Date:** 2018-07-17

**Site:** Elementary  
**Floor:** 2

**Building Name:** Our Lady of Lourdes  
**Room #:**  
**Last Re-Assessment:** 2022-05-11

**Area (sqft):** 0

ASBESTOS																
System	Component	Material	Item	Covering	A*	V*	AP*	Good	Fair	Poor	Unit	Sample	Asbestos Type	Amount	Hazard	Friable
Ceiling		Ceiling Tiles (lay-in), 2x4 Large Pinhole			C	Y						V0002	None Detected		None	
Floor		Mastic			D	N		100			%	V9500	Presumed Asbestos		Presumed Asbestos	NF
Floor		Vinyl Floor Tile (No Mastic), 9x9 Beige w Tan Streak			A	Y		100			%	V9500	Presumed Asbestos		Presumed Asbestos	NF
Floor		Vinyl Floor Tile (No Mastic), 9x9 Green w White Streak			A	Y		98	2		%	V9500	Presumed Asbestos		Presumed Asbestos	NF
Other	Light Fixture	Paper, heat shield			C	N		1			EA	V9500	Presumed Asbestos		Presumed Asbestos	NF
Wall		Masonry			A	Y						V0000	Non-Asbestos		None	

# ALL DATA REPORT

**Client:** Hamilton-Wentworth Catholic District Sch  
**Location:** #205 : Classroom 21  
**Survey Date:** 2018-07-17

**Site:** Elementary  
**Floor:** 2

**Building Name:** Our Lady of Lourdes  
**Room #:**  
**Last Re-Assessment:** 2022-05-11

**Area (sqft):** 0

ASBESTOS																
System	Component	Material	Item	Covering	A*	V*	AP*	Good	Fair	Poor	Unit	Sample	Asbestos Type	Amount	Hazard	Friable
Ceiling		Ceiling Tiles (lay-in), 2x4 Large Pinhole			C	Y						V0002	None Detected		None	
Floor		Mastic			D	N		100			%	V0000	Non-Asbestos		None	
Floor		Vinyl Floor Tile (No Mastic), 9x9 blue with white streak			A	Y		98	2		%	V9500	Presumed Asbestos		Presumed Asbestos	NF
Floor		Vinyl Floor Tile (No Mastic), 9x9 white with black streak			A	Y		100			%	V0013	Asbestos Containing	0.5-5%	Confirmed Asbestos	NF
Other	Light Fixture	Paper, heat shield			C	N		2			EA	V9500	Presumed Asbestos		Presumed Asbestos	NF
Wall		Masonry			A	Y						V0000	Non-Asbestos		None	

**Client:** Hamilton-Wentworth Catholic District Sch  
**Location:** #206 : Custodian Room  
**Survey Date:** 2018-07-17

**Site:** Elementary  
**Floor:** 2

**Building Name:** Our Lady of Lourdes  
**Room #:**  
**Last Re-Assessment:** 2022-05-11

**Area (sqft):** 0

ASBESTOS																
System	Component	Material	Item	Covering	A*	V*	AP*	Good	Fair	Poor	Unit	Sample	Asbestos Type	Amount	Hazard	Friable
Ceiling		Ceiling Tiles (lay-in), 2x4 Large Pinhole			C	Y						V0002	None Detected		None	
Floor		Mastic			D	N						V0000	Non-Asbestos		None	
Floor		Vinyl Floor Tile (No Mastic), 9x9 White w Black Streak			A	Y		100			%	S0013	Asbestos Containing	0.5-5%	Confirmed Asbestos	NF
Floor		Vinyl Floor Tile (No Mastic), 9x9 blue w white streak			A	Y						V9500	Presumed Asbestos		Presumed Asbestos	NF
Other	Light Fixture	Paper, heat shield			C	N		1			EA	V9500	Presumed Asbestos		Presumed Asbestos	NF
Wall		Masonry			A	Y						V0000	Non-Asbestos		None	

# ALL DATA REPORT

**Client:** Hamilton-Wentworth Catholic District Sch  
**Location:** #207 : Classroom 20  
**Survey Date:** 2018-07-17

**Site:** Elementary  
**Floor:** 2

**Building Name:** Our Lady of Lourdes  
**Room #:**  
**Last Re-Assessment:** 2022-05-11

**Area (sqft):** 0

ASBESTOS																
System	Component	Material	Item	Covering	A*	V*	AP*	Good	Fair	Poor	Unit	Sample	Asbestos Type	Amount	Hazard	Friable
Ceiling		Ceiling Tiles (lay-in), 2x4 Large Pinhole			C	Y						V0002	None Detected		None	
Floor		Mastic			D	N		100			%	V9500	Presumed Asbestos		Presumed Asbestos	NF
Floor		Vinyl Floor Tile (No Mastic), 9x9 Beige w Tan Streak			A	Y		100			%	V9500	Presumed Asbestos		Presumed Asbestos	NF
Floor		Vinyl Floor Tile (No Mastic), 9x9 Green w White Streak			A	Y		100			%	V9500	Presumed Asbestos		Presumed Asbestos	NF
Other	Light Fixture	Paper, heat shield			C	N		2			EA	V9500	Presumed Asbestos		Presumed Asbestos	NF
Wall		Masonry			A	Y						V0000	Non-Asbestos		None	

ALL DATA REPORT

**Client:** Hamilton-Wentworth Catholic District Sch  
**Location:** #208 : Classroom 19  
**Survey Date:** 2018-07-17

**Site:** Elementary  
**Floor:** 2

**Building Name:** Our Lady of Lourdes  
**Room #:**  
**Last Re-Assessment:** 2022-05-11

**Area (sqft):** 0

ASBESTOS																
System	Component	Material	Item	Covering	A*	V*	AP*	Good	Fair	Poor	Unit	Sample	Asbestos Type	Amount	Hazard	Friable
Ceiling		Ceiling Tiles (lay-in), 2x4 Large Pinhole			C	Y						V0002	None Detected		None	
Floor		Mastic			D	N		100			%	V9500	Presumed Asbestos		Presumed Asbestos	NF
Floor		Vinyl Floor Tile (No Mastic), 9x9 Beige w Tan Streak			A	Y		100			%	V9500	Presumed Asbestos		Presumed Asbestos	NF
Other	Light Fixture	Paper, heat shield			C	N		2			EA	V9500	Presumed Asbestos		Presumed Asbestos	NF
Piping		Parging Cement	Fitting		C	Y		2			EA	V0016	Chrysotile	>75%	Confirmed Asbestos	F
Wall		Masonry			A	Y						V0000	Non-Asbestos		None	

**Client:** Hamilton-Wentworth Catholic District Sch  
**Location:** #209 : Classroom 18  
**Survey Date:** 2018-07-17

**Site:** Elementary  
**Floor:** 2

**Building Name:** Our Lady of Lourdes  
**Room #:**  
**Last Re-Assessment:** 2022-05-11

**Area (sqft):** 0

ASBESTOS																
System	Component	Material	Item	Covering	A*	V*	AP*	Good	Fair	Poor	Unit	Sample	Asbestos Type	Amount	Hazard	Friable
Ceiling		Ceiling Tiles (lay-in), 2x4 Large Pinhole			C	Y						V0002	None Detected		None	
Floor		Mastic			D	N		100			%	V9500	Presumed Asbestos		Presumed Asbestos	NF
Floor		Vinyl Floor Tile (No Mastic), 9x9 Beige w Tan Streak			A	Y		100			%	V9500	Presumed Asbestos		Presumed Asbestos	NF
Floor		Vinyl Floor Tile (No Mastic), 9x9 Green w White Streak			A	Y		100			%	V9500	Presumed Asbestos		Presumed Asbestos	NF
Other	Light Fixture	Paper, heat shield			C	N		2			EA	V9500	Presumed Asbestos		Presumed Asbestos	NF
Piping		Parging Cement	Fitting		C	Y		2			EA	V0016	Chrysotile	>75%	Confirmed Asbestos	F
Wall		Masonry			A	Y						V0000	Non-Asbestos		None	

# ALL DATA REPORT

**Client:** Hamilton-Wentworth Catholic District Sch  
**Location:** #210 : Stairs  
**Survey Date:** 2018-07-17

**Site:** Elementary  
**Floor:** 2

**Building Name:** Our Lady of Lourdes  
**Room #:**  
**Last Re-Assessment:** 2022-05-11

**Area (sqft):** 0

ASBESTOS																
System	Component	Material	Item	Covering	A*	V*	AP*	Good	Fair	Poor	Unit	Sample	Asbestos Type	Amount	Hazard	Friable
Ceiling		Ceiling Tiles (lay-in), 2x4 Large Pinhole			C	Y						V0002	None Detected		None	
Floor		Mastic			D	N		100			%	V9500	Presumed Asbestos		Presumed Asbestos	NF
Floor		Vinyl Floor Tile (No Mastic), 9x9 Beige w Tan Streak			A	Y		100			%	V9500	Presumed Asbestos		Presumed Asbestos	NF
Wall		Masonry			A	Y						V0000	Non-Asbestos		None	

## Legend:

Sample number		Units		Other	
S####	Asbestos sample collected	SF	Square feet	A	Access
V####	Material visually similar to numbered sample collected	LF	Linear feet	V	Visible
V0000	Known non-asbestos material	EA	Each	AP	Air Plenum
V9000	Visually identified as an asbestos material	%	Percentage	F	Friable material
V9500	Material is presumed to be an asbestos material			NF	Non Friable material
				PF	Potentially Friable material

### Access

A	Accessible to all building occupants
B	Accessible to maintenance and operations staff without a ladder
C	Accessible to maintenance and operations staff with a ladder. Also rarely entered, locked areas
D	Not normally accessible

### Condition

Good	No visible damage or deterioration
Fair	Minor, repairable damage, cracking, delamination or deterioration
Poor	Irreparable damage or deterioration with exposed and missing material

### Visible

Y	The material is visible when standing on the floor of the room, without the removal or opening of other building components (e.g. ceiling tiles or access panels).
N	The material is not visible to view when standing on the floor of the room and requires the removal of a building component (e.g. ceilings tiles or access panels) to view and access. Includes rarely entered crawlspaces, attic spaces, etc. Observations will be limited to the extent visible from the access points.

### Air Plenum

Yes or No	The material is in a return air plenum or in a direct airstream or there is evidence of air erosion (e.g. duct for heating or cooling blowing directly on or across an ACM). This field is only completed where Air Plenum consideration is required by regulation.
-----------	---

### Colour Coding

	The material is known to contain regulated concentrations of asbestos; either by analytical results or visible identification (use of the V9000 code).
	The material is presumed to contain asbestos; based on visual appearances; typically a material known to historically contain asbestos; however, not sampled due to limited access or the destructive nature of the sampling.

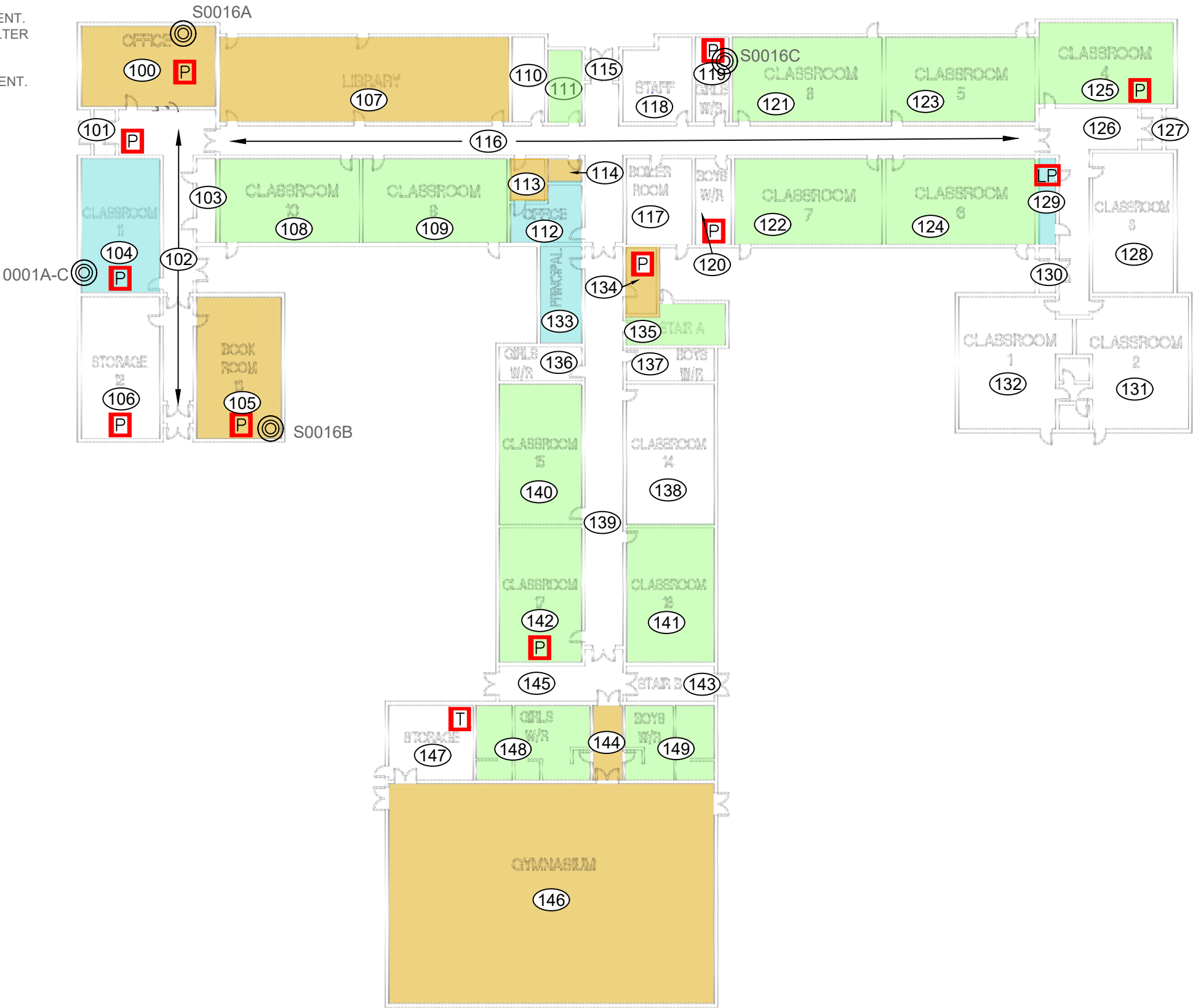


**APPENDIX V**  
**Drawings**

NOT ALL KNOWN OR SUSPECTED ASBESTOS BUILDING MATERIALS MAY BE DEPICTED ON THE DRAWING. REFER TO THE ASBESTOS REASSESSMENT REPORT FOR A COMPLETE LIST OF KNOWN AND SUSPECTED ASBESTOS BUILDING MATERIALS.

LEGEND IS COLOUR DEPENDENT. NON-COLOUR COPIES MAY ALTER INTERPRETATION.

BASE PLAN PROVIDED BY CLIENT.



905-577-6206 [www.pinchin.com](http://www.pinchin.com)

- LEGEND:
- (X) LOCATION NUMBER
  - ⊙ ASBESTOS BULK SAMPLE
- ASBESTOS-CONTAINING MATERIALS:
- P PARGING CEMENT
  - T TRANSITE DRAIN
  - VINYL FLOOR TILES
  - VINYL FLOOR TILES & MASTIC
  - MASTIC
  - LP LIGHT PAPER

CLIENT

Hamilton-Wentworth  
Catholic District School Board  
*Believing. Achieving. Serving*

LOCATION:  
OUR LADY OF LOURDES  
420 MOHAWK ROAD EAST  
HAMILTON, ONTARIO

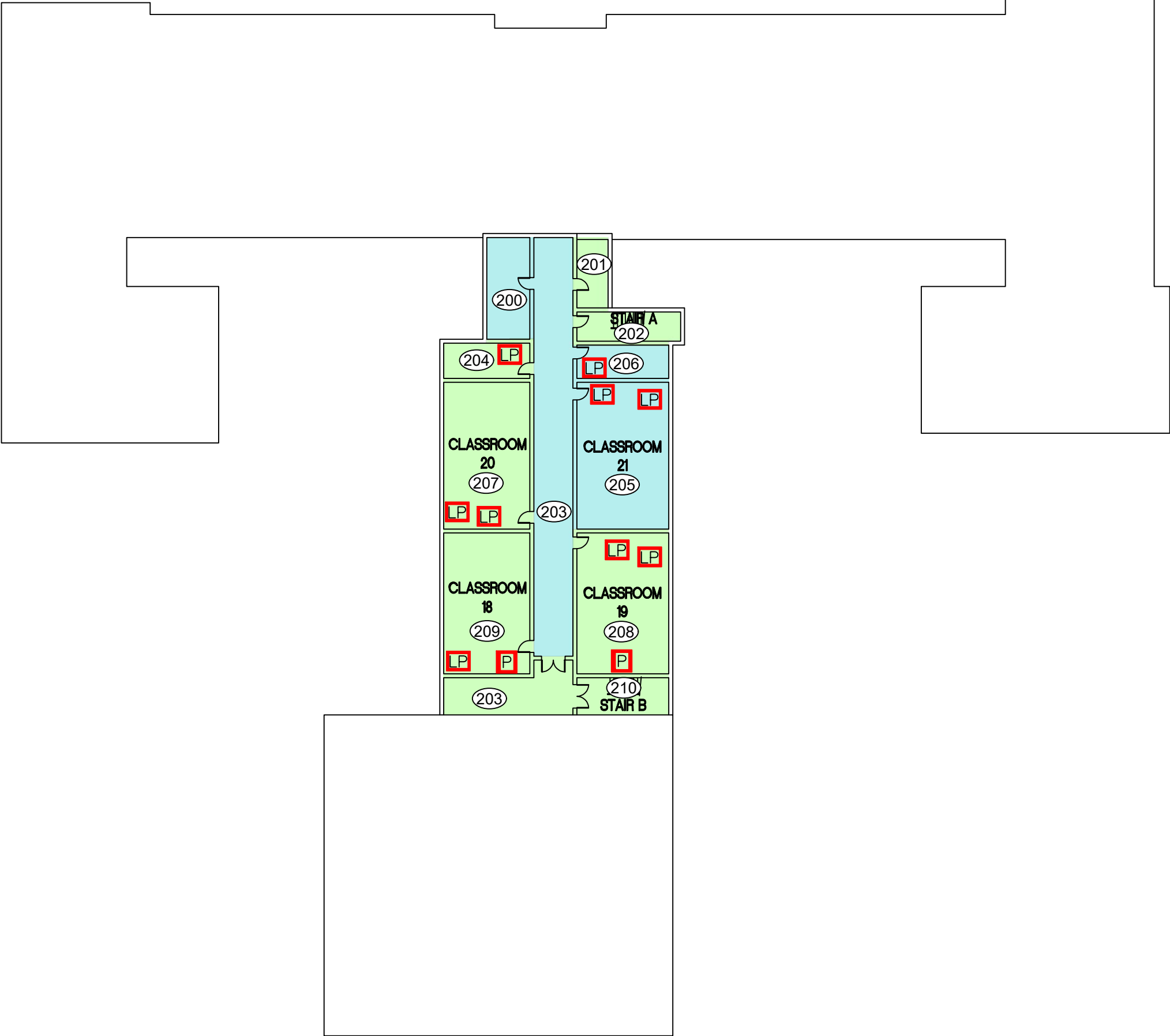
TITLE:  
ASBESTOS REASSESSMENT  
FLOOR LEVEL 1

DATE: AUGUST 2022	PROJECT # : 303992.004
DRAWN BY: EB	DRAWING:  1 OF 2
CHECKED BY: EB	
SCALE: NTS	

NOT ALL KNOWN OR SUSPECTED ASBESTOS BUILDING MATERIALS MAY BE DEPICTED ON THE DRAWING. REFER TO THE ASBESTOS REASSESSMENT REPORT FOR A COMPLETE LIST OF KNOWN AND SUSPECTED ASBESTOS BUILDING MATERIALS.

LEGEND IS COLOUR DEPENDENT. NON-COLOUR COPIES MAY ALTER INTERPRETATION.

BASE PLAN PROVIDED BY CLIENT.



905-577-6206      www.pinchin.com

- LEGEND:
- (X) LOCATION NUMBER
  - ⊙ ASBESTOS BULK SAMPLE
- ASBESTOS-CONTAINING MATERIALS:
- P** PARGING CEMENT
  - T** TRANSITE DRAIN
  - V** VINYL FLOOR TILES
  - VT** VINYL FLOOR TILES & MASTIC
  - M** MASTIC
  - LP** LIGHT PAPER

CLIENT:



Hamilton-Wentworth  
Catholic District School Board  
*Believing. Achieving. Serving*

LOCATION:  
OUR LADY OF LOURDES  
420 MOHAWK ROAD EAST  
HAMILTON, ONTARIO

TITLE:  
  
ASBESTOS REASSESSMENT  
FLOOR LEVEL 2

DATE: AUGUST 2022	PROJECT # : 303992.004
DRAWN BY: EB	DRAWING:  2 OF 2
CHECKED BY: EB	
SCALE: NTS	