



# Asbestos Reassessment

Our Lady of the Assumption  
20 Highway 55, Stoney Creek,  
Ontario

Prepared for:

**Hamilton-Wentworth Catholic  
District School Board**

90 Mulberry Street  
Hamilton, Ontario, L8N 3R9

August 12, 2022

Pinchin File: 303992.004



**Asbestos Reassessment**

Our Lady of the Assumption, 20 Highway 55, Stoney Creek, Ontario  
Hamilton-Wentworth Catholic District School Board

August 12, 2022  
Pinchin File: 303992.004

**Issued to:** Hamilton-Wentworth Catholic District  
School Board

**Issued on:** August 12, 2022

**Pinchin File:** 303992.004

**Issuing Office:** Hamilton, ON

**Pinchin Contact:** Emily Balfour, Project Manager  
365.889.5147  
[ebalfour@pinchin.com](mailto:ebalfour@pinchin.com)

---



Author: \_\_\_\_\_

Emily Balfour  
Project Manager  
335.889.5147  
[ebalfour@pinchin.com](mailto:ebalfour@pinchin.com)

Reviewer: \_\_\_\_\_

Damian Palus, C.E.T.  
Operations Manager  
289.678.0694  
[dpalus@pinchin.com](mailto:dpalus@pinchin.com)



## **EXECUTIVE SUMMARY**

Hamilton-Wentworth Catholic District School Board (Client) retained Pinchin Ltd. (Pinchin) to conduct an asbestos building materials reassessment at the subject building.

The objective of the reassessment was to evaluate the condition and quantity of previously reported asbestos-containing materials (ACM) and develop corrective action plans as required for the purposes of long-term management. The results of this reassessment are not intended for construction, renovation, demolition or project tendering purposes.

### **Summary of Recommendations**

The following is a summary of significant recommendations; refer to the body of the report for detailed recommendations:

- Perform a reassessment of asbestos materials on an annual basis.
- Perform a pre-construction assessment and remove all asbestos-containing materials (ACM) prior to alteration or maintenance work if ACM may be disturbed by the work.
- Follow appropriate safe work procedures when handling or disturbing asbestos.
- Sample any presumed ACM prior to alteration or maintenance work if presumed ACM may be disturbed by the work.
- Remediate the materials as described in Section 4.2.

*This Executive Summary is subject to the same standard limitations as contained in the report and must be read in conjunction with the entire report.*



## Asbestos Reassessment

Our Lady of the Assumption, 20 Highway 55, Stoney Creek, Ontario  
Hamilton-Wentworth Catholic District School Board

August 12, 2022  
Pinchin File: 303992.004

### TABLE OF CONTENTS

1.0	INTRODUCTION AND SCOPE .....	1
1.1	Scope of Assessment .....	1
2.0	BACKGROUND INFORMATION .....	1
2.1	Building Year of Construction and Additions .....	1
2.2	Existing Reports .....	1
3.0	FINDINGS .....	2
3.1	Excluded Asbestos Materials .....	2
3.2	Confirmed/Presumed Asbestos-Containing Materials and Confirmed Non-Asbestos Materials .....	3
4.0	RECOMMENDATIONS .....	9
4.1	General .....	9
4.2	Remedial Work .....	9
4.3	On-going Management and Maintenance .....	10
5.0	TERMS AND LIMITATIONS .....	10
6.0	REFERENCES .....	11

### APPENDICES

APPENDIX I	Asbestos Analytical Certificates
APPENDIX II	Location List
APPENDIX III	Hazardous Materials Summary / Sample Log Report
APPENDIX IV	All Data Report
APPENDIX V	Drawings



## Asbestos Reassessment

Our Lady of the Assumption, 20 Highway 55, Stoney Creek, Ontario  
Hamilton-Wentworth Catholic District School Board

August 12, 2022  
Pinchin File: 303992.004

## 1.0 INTRODUCTION AND SCOPE

Hamilton-Wentworth Catholic District School Board (Client) retained Pinchin Ltd. (Pinchin) to conduct an asbestos building materials reassessment at Our Lady of the Assumption located at 20 Highway 55, Stoney Creek, Ontario.

The reassessment was performed by Emily Balfour, Project Manager on May 10, 2022.

The objectives of the reassessment were to document the locations, quantities and conditions of previously identified asbestos-containing building materials and develop corrective action plans as required. This reassessment is only to be used for the purposes of long-term management and routine maintenance. The results of this reassessment are not to be used for construction, renovation, demolition or project tendering purposes.

### 1.1 Scope of Assessment

The objective of the reassessment was to evaluate the condition and quantity of previously reported asbestos-containing materials (ACM's), and develop corrective action plans as required.

Additional objectives included sampling of presumed asbestos-containing wall and ceiling finishes (i.e. plaster and drywall joint compound).

Refer to the Asbestos Building Materials Reassessment Methodology report and Annex A dated 2022, Pinchin File 303992.004, for the methodology used during the reassessment.

## 2.0 BACKGROUND INFORMATION

### 2.1 Building Year of Construction and Additions

Item	Details
Year of Construction	1962
Year of Additions	1966

### 2.2 Existing Reports

#### 2.2.1 Review of Previous Reports

Pinchin was provided with the following report, which has been reviewed and relied upon as part of this assessment:

- Asbestos Reassessment Report, Our Lady of the Assumption, 55 Highway 20 South, Stoney Creek, ON, August 2020, Prepared by Pinchin Ltd., Pinchin File: 272113.



## Asbestos Reassessment

Our Lady of the Assumption, 20 Highway 55, Stoney Creek, Ontario  
Hamilton-Wentworth Catholic District School Board

August 12, 2022  
Pinchin File: 303992.004

- Asbestos Reassessment Report, Our Lady of the Assumption, 55 Highway 20 South, Stoney Creek, ON, July 2021, Prepared by Pinchin Ltd., Pinchin File: 286533.001.

### 3.0 FINDINGS

The following section summarizes the findings of the reassessment and provides a general description of the asbestos materials identified. For details on quantities, assessment, sample numbers, friability, condition, and locations of asbestos materials; refer to the Hazardous Materials Summary / Sample Log Report and All Data Report in Appendices III and IV, respectively.

#### 3.1 Excluded Asbestos Materials

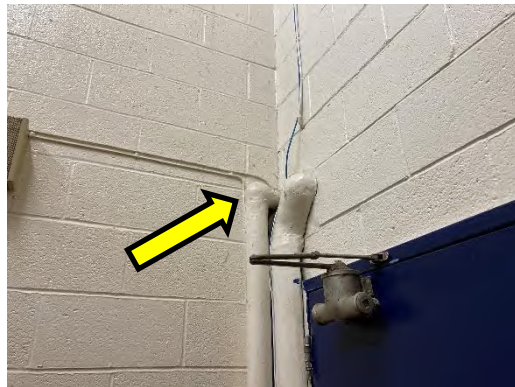
A number of materials which might contain asbestos were not sampled during this reassessment due to limitations in scope and methodology. Where present, these materials are assumed to contain asbestos until otherwise proven by sampling and analysis. These materials are not shown on the drawings in Appendix V. Excluded materials presumed to contain asbestos include:




Material	Friability
Roofing, felts and tar	Non-friable
Concrete floor levelling compound	Non-friable
Electrical components or wiring within control centers, breakers, motors or lights, insulation on wiring	Non-friable
Vermiculite in concrete block wall cavities	Friable
Adhesives and duct mastics	Non-friable
Caulking and butyl seals	Non-friable
Fibre reinforced paints and coatings	Non-friable
Paper products	Non-friable
Soffit and fascia boards	Non-friable
Mechanical packing, ropes and gaskets	Non-friable
Vinyl baseboards	Non-friable
Exterior cladding	Non-friable
Fire resistant doors or metal clad finishes	Non-friable

Material	Friability
Vibration dampers on HVAC equipment	Non-friable
Ceramic tile thin-set	Non-friable

### 3.2 Confirmed/Presumed Asbestos-Containing Materials and Confirmed Non-Asbestos Materials




This section includes materials that have been confirmed asbestos-containing by sample analysis or presumed asbestos-containing by visual identification. Refer to the drawings in Appendix V for the locations of confirmed and presumed ACMs indicated via hatching or symbols. The locations of samples from the historical assessments performed by Pinchin, have been included on the drawings.




Material and Application	Asbestos Type/Friability	Photo
Parging cement is present on pipe fittings (elbows, valves, tees, hangers etc.)	Chrysotile/Friable	
Sweatwrap insulation (brown layered paper) is present on straight sections of pipes.	None	
Remaining pipes are either uninsulated or insulated with non-asbestos fibreglass or elastomeric insulation (Armaflex).	None	
Ducts are either uninsulated or insulated with non-asbestos fibreglass.	None	
Mechanical equipment is either uninsulated or insulated with non-asbestos fibreglass.	None	

Material and Application	Asbestos Type/Friability	Photo
24"x48" lay-in ceiling tiles, with a short fissure random pattern are present in the Gymnasium (Location 101).	Presumed/Non-friable	
Remaining ceiling tiles are presumed to be non-asbestos based on previous sampling or the material of manufacture (fibreglass).	None	
Plaster present on walls and ceilings does not contain asbestos.	None	
Drywall joint compound is present on wall and ceiling finishes.	Chrysotile/Non-friable	
Vinyl floor tiles, 9"x9" red with white streak are present.	Chrysotile/Non-friable (tile) Presumed/Non-friable (mastic)	



Material and Application	Asbestos Type/Friability	Photo
Vinyl floor tiles, 9"x9" brown with white fleck are present.	Presumed/Non-friable (tile) Presumed/Non-friable (mastic)	
Vinyl floor tiles, 9"x9" blue with white streak are present.	Presumed/Non-friable (tile) Presumed/Non-friable (mastic)	
Vinyl floor tiles, 9"x9" tan with white streak are present.	Presumed/Non-friable (tile) Presumed/Non-friable (mastic)	

Material and Application	Asbestos Type/Friability	Photo
Vinyl floor tiles, 9"x9" grey with white and black fleck are present.	Presumed/Non-friable (tile)  Presumed/Non-friable (mastic)	
Vinyl floor tiles, 12"x12" cream with rose fleck are present.	Presumed/Non-friable (tile)  Presumed/Non-friable (mastic)	
Vinyl floor tiles, 12"x12" black dense fleck are present.	Presumed/Non-friable (tile)  Presumed/Non-friable (mastic)	

Material and Application	Asbestos Type/Friability	Photo
Vinyl floor tiles, 12"x12" beige with brown and white streak are present.	Presumed/Non-friable (tile)  Presumed/Non-friable (mastic)	
Vinyl floor tiles, 12"x12" white with black streak are present.	Presumed/Non-friable (tile)  Presumed/Non-friable (mastic)	
Vinyl floor tiles, 12"x12" white with black and grey fleck are present.	Presumed/Non-friable (tile)  Presumed/Non-friable (mastic)	

Material and Application	Asbestos Type/Friability	Photo
Vinyl floor tiles, 12"x12" aqua dense fleck are present.	Presumed/Non-friable (tile)  Presumed/Non-friable (mastic)	
Vinyl floor tiles, 12"x12" grey dense fleck are present.	None (tile)  Presumed/Non-friable (mastic)	
Vinyl floor tiles, 12"x12" beige dense fleck are present.	None (tile)  Presumed/Non-friable (mastic)	



Material and Application	Asbestos Type/Friability	Photo
Paper heat shields are present in light fixtures.	Presumed/Non-friable	

Additional notes on the asbestos-containing drywall joint compound discussed above:

- Drywall (gypsum board) and drywall joint compound is present as a wall and ceiling finish in the school. As per the methodology, drywall joint compound is sampled at exterior walls, columns or other locations that are unlikely to have been renovated in an attempt to determine the presence of asbestos in the original drywall compound. A total of 3 samples of drywall joint compound were collected (samples S0008A-C) and it was found that 1 sample contains chrysotile asbestos. The asbestos-positive results indicate that at minimum, the original drywall joint compound application contains asbestos and all drywall joint compound should be presumed to contain asbestos. Further sampling may be considered in an attempt to delineate asbestos-containing drywall compound from newer, non-asbestos drywall compound.

## 4.0 RECOMMENDATIONS

### 4.1 General

Perform a detailed intrusive assessment prior to building renovation or demolition operations. The assessment should include; destructive testing (i.e. coring and/or removal of building finishes and components), sampling of other hazardous materials (lead, mercury, PCBs, mould, etc.), and materials not tested in this study (i.e. excluded asbestos materials).

### 4.2 Remedial Work

The following remedial work is recommended.

Material, Quantity, Condition and Photo #	Location Name (Location #)	Recommended Procedure
Pipe insulation, 1 fitting, poor condition, Photo 1	Corridor (Location 102)	Asbestos precautions for entry into ceiling space which may disturb asbestos in poor condition.

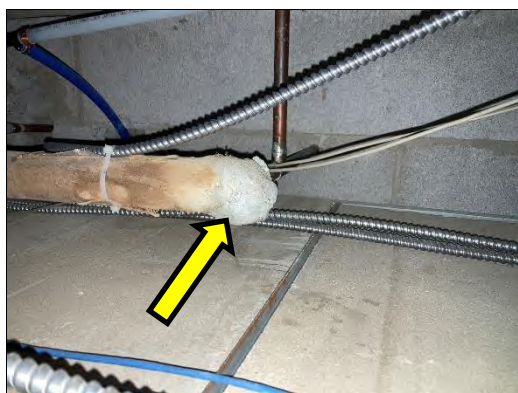


Photo 1

### 4.3 On-going Management and Maintenance

The following recommendations are made regarding on-going management and maintenance work involving the asbestos materials identified.

#### 4.3.1 Asbestos

Maintain the Asbestos Management Program (AMP).

Perform a reassessment of asbestos materials on an annual basis.

Remove asbestos-containing materials (ACM) prior to alteration or maintenance work if ACM may be disturbed by the work. Follow appropriate asbestos precautions for the classification of work being performed.

Sample presumed ACM prior to alteration or maintenance work if the presumed ACM may be disturbed by the work.

Update the asbestos inventory report upon completion of any abatement and removal of asbestos-containing materials.

### 5.0 TERMS AND LIMITATIONS

This work was performed subject to the Terms and Limitations presented or referenced in the proposal for this project.



Information provided by Pinchin is intended for Client use only. Pinchin will not provide results or information to any party unless disclosure by Pinchin is required by law. Any use by a third party of reports or documents authored by Pinchin or any reliance by a third party on or decisions made by a third party based on the findings described in said documents, is the sole responsibility of such third parties. Pinchin accepts no responsibility for damages suffered by any third party as a result of decisions made or actions conducted. No other warranties are implied or expressed.

## **6.0 REFERENCES**

The following legislation and documents were referenced in completing the assessment and this report:

1. Asbestos on Construction Projects and in Buildings and Repair Operations, Ontario Regulation 278/05.
2. Designated Substances, Ontario Regulation 490/09.

\\pinchin.com\ham\Job\303000s\0303992.000 HWCDSB, Various2022Projects, ASB, CONS\0303992.004  
HWCDSB, AllFacilities, 2022, ASB, REASSMT\Deliverables\Elementary\Our Lady of Assumption\Report\303992.004 OLA ACM Reassessment Report HWCDSB August 12  
2022.docx

Template: Master Report for Asbestos Reassessment, HAZ, April 23, 2019

**APPENDIX I**  
**Asbestos Analytical Certificates**





## Pinchin Ltd. Asbestos Laboratory *Certificate of Analysis*

**Project Name:** Hamilton-Wentworth Catholic School Board  
Our Lady of the Assumption, 55 Highway 20 South, Hamilton, ON

**Project No.:** 0272113.000

**Prepared For:** E. Balfour / M. Maiorana

**Lab Reference No.:** b235659

**Analyst(s):** J. Dacquel

**Date Received:** August 13, 2020      **# Samples submitted:** 11

**Date Analyzed:** August 21, 2020      **# Phases analyzed:** 18

---

### Method of Analysis:

#### **EPA 600/R-93/116 - Method for the Determination of Asbestos in Bulk Building Materials dated July, 1993**

Bulk samples are checked visually and scanned under a stereomicroscope. Slides are prepared and observed under a Polarized Light Microscope (PLM) at magnifications of 40X, 100X or 400X as appropriate. Asbestos fibres are identified by a combination of morphology, colour, refractive index, extinction, sign of elongation, birefringence and dispersion staining colours. A visual estimate is made of the percentage of asbestos present. A reported concentration of less than (<) the regulatory threshold (see chart below) indicates the presence of confirmed asbestos in trace quantities, limited to only a few fibres or fibre bundles in an entire sample. This method complies with provincial regulatory requirements where applicable. Multiple phases within a sample are analyzed and reported separately.

All bulk samples submitted to this laboratory for asbestos analysis are retained for a minimum of three months. Samples may be retrieved, upon request, for re-examination at any time during that period.

The Pinchin Ltd. Mississauga asbestos laboratory is accredited by the National Institute of Standards and Technology, National Voluntary Laboratory Accreditation Program (NVLAP Lab Code 101270-0) for the 'EPA – 40 CFR Appendix E to Subpart E of Part 763, Interim Method of the Determination of Asbestos in Bulk Insulation Samples,' and the 'EPA 600/R-93/116: Method for the Determination of Asbestos in Bulk Building Materials'; and meets all requirements of ISO/IEC 17025:2005.

This report relates only to the items tested.

**NOTE:** *This test report may not be reproduced, except in full, without the written approval of the laboratory. The client may not use this report to claim product endorsement by NVLAP or any agency of the U.S. Government. This report is valid only when signed in blue ink by the analyst. Vinyl asbestos floor tiles contain very fine fibres of asbestos and may be missed by some laboratories using the PLM method. Internal verification studies performed by Pinchin indicate that the chance of missing asbestos in floor tiles is no higher than about 2%. The vinyl tile study and laboratory documentation on measurement uncertainty is available upon request. The analysis of dust samples by PLM cannot be used as an indicator of past or present airborne asbestos fibre levels.*



**Pinchin Ltd. Asbestos Laboratory**  
***Certificate of Analysis***

**Project Name:** Hamilton-Wentworth Catholic School Board  
Our Lady of the Assumption, 55 Highway 20 South, Hamilton, ON  
**Project No.:** 0272113.000  
**Prepared For:** E. Balfour / M. Maiorana  
**Lab Reference No.:** b235659  
**Date Analyzed:** August 21, 2020

**BULK SAMPLE ANALYSIS**

SAMPLE IDENTIFICATION	SAMPLE DESCRIPTION	% COMPOSITION (VISUAL ESTIMATE)	
		ASBESTOS	OTHER
S0007A Smooth plaster on ceiling, location 105	2 Phases: a) Homogeneous, grey, hard, cementitious, plaster base coat.	None Detected	Non-Fibrous Material > 75%
	b) Homogeneous, white, layered, hard, cementitious, plaster top coat.	None Detected	Non-Fibrous Material > 75%
Comments:	Phase a) is small in size. For more reliable results, a larger sample is required.		
S0007B Smooth plaster on ceiling, location 106	2 Phases: a) Homogeneous, grey, hard, cementitious, plaster base coat.	None Detected	Non-Fibrous Material > 75%
	b) Homogeneous, white, hard, cementitious, plaster top coat.	None Detected	Non-Fibrous Material > 75%
Comments:	Phase a) is small in size. For more reliable results, a larger sample is required.		
S0007C Smooth plaster on ceiling, location 107	2 Phases: a) Homogeneous, grey, hard, cementitious, plaster base coat.	Chrysotile < 0.5%	Non-Fibrous Material > 75%
	b) Homogeneous, white, hard, cementitious, plaster top coat.	None Detected	Non-Fibrous Material > 75%
Comments:	Phase a) is small in size. For more reliable results, a larger sample is required.		



## Pinchin Ltd. Asbestos Laboratory Certificate of Analysis

**Project Name:** Hamilton-Wentworth Catholic School Board  
 Our Lady of the Assumption, 55 Highway 20 South, Hamilton, ON  
**Project No.:** 0272113.000  
**Prepared For:** E. Balfour / M. Maiorana  
  
**Lab Reference No.:** b235659  
**Date Analyzed:** August 21, 2020

### BULK SAMPLE ANALYSIS

SAMPLE IDENTIFICATION	SAMPLE DESCRIPTION	% COMPOSITION (VISUAL ESTIMATE)	
		ASBESTOS	OTHER
S0007D Smooth plaster on wall, location 108	2 Phases: a) Homogeneous, grey, hard, cementitious, plaster base coat. b) Homogeneous, white, hard, cementitious, plaster top coat.	None Detected  None Detected	Non-Fibrous Material > 75%  Non-Fibrous Material > 75%
Comments:	Synthetic fibres are present on the surface of this sample.		
S0007E Smooth plaster on wall, location 212	3 Phases: a) Homogeneous, grey, hard, cementitious, plaster base coat. b) Homogeneous, white, hard, cementitious, plaster top coat.  c) Homogeneous, white, drywall joint compound.	None Detected  None Detected  None Detected	Non-Fibrous Material > 75%  Non-Fibrous Material > 75%  Non-Fibrous Material > 75%
S0008A Drywall joint compound on ceiling, location 132	Homogeneous, beige, layered, drywall joint compound.	Chrysotile 0.5-5%	Non-Fibrous Material > 75%
Comments:	Drywall is present on the surface of this sample.		
S0008B Drywall joint compound on ceiling, location 132			Not Analyzed
Comments:	Analysis was stopped due to a previous positive result.		



## Pinchin Ltd. Asbestos Laboratory Certificate of Analysis

**Project Name:** Hamilton-Wentworth Catholic School Board  
 Our Lady of the Assumption, 55 Highway 20 South, Hamilton, ON  
**Project No.:** 0272113.000  
**Prepared For:** E. Balfour / M. Maiorana  
  
**Lab Reference No.:** b235659  
**Date Analyzed:** August 21, 2020

### BULK SAMPLE ANALYSIS

SAMPLE IDENTIFICATION	SAMPLE DESCRIPTION	% COMPOSITION (VISUAL ESTIMATE)	
		ASBESTOS	OTHER
S0008C Drywall joint compound on wall, location 200			Not Analyzed
Comments:	Analysis was stopped due to a previous positive result.		
S0009A Sweatwrap, location 201	2 Phases: a) Homogeneous, black, tar-impregnated, compressed, fibrous material. b) Homogeneous, beige, layered paper.	None Detected  None Detected	Cellulose 50-75% Tar and other non-fibrous 25-50%  Cellulose > 75% Non-Fibrous Material 0.5-5%
S0009B Sweatwrap, location 201	2 Phases: a) Homogeneous, black, tar-impregnated, compressed, fibrous material. b) Homogeneous, beige, layered paper.	None Detected  None Detected	Cellulose 50-75% Tar and other non-fibrous 25-50%  Cellulose > 75% Non-Fibrous Material 0.5-5%
S0009C Sweatwrap, location 201	2 Phases: a) Homogeneous, black, tar-impregnated, compressed, fibrous material. b) Homogeneous, beige, layered paper.	None Detected  None Detected	Cellulose 50-75% Tar and other non-fibrous 25-50%  Cellulose > 75% Non-Fibrous Material 0.5-5%

Reviewed by:

Reporting Analyst:



Analyzed by: *[Signature]*  
Reviewed by: *[Signature]*  
Report by: *[Signature]*

MEMBER OF  
**PG**  
THE PINCHIN GROUP

(18)

**Instructions:**

**Pinchin Ltd. - Asbestos Laboratory  
Internal Asbestos Bulk Sample Chain of Custody**

Client Name:	Hamilton-Wentworth Catholic School Board	Project Address:	55 Highway 20 South, Hamilton, Ontario
Portfolio/Building No:	Our Lady of the Assumption	Pinchin File:	272113
Submitted by:	Emily Balfour	Email:	ebalfour@pinchin.com
CC Results to:	Michael Maiorana	CC Email:	mmaiorana@pinchin.com
Invoice to:	Accounts Payable	Invoice Email:	ap@pinchin.com
Date Submitted:	August 12 2020	Required by:	August 19 2020
# of Samples:	11	Priority:	5 Day Turnaround
Year of Building Construction (Mandatory Field):		1962	
Do NOT Stop on Positive (Sample Numbers):			
Pinchin Group Company (Mandatory Field):		Pinchin	

**To be Completed by Lab Personnel Only:**

Lab Reference #:	b235659		Time:	24 hour clock		
Received by:	DS	AUG 13 2020	Date:	Month	Day	Year
Name(s) of Analyst(s):	J. Macquarrie		AUG. 31, 2020			
Sample Prefix	Sample No.	Sample Suffix	Sample Description/Location (Mandatory)			
	S0007	A	Smooth plaster on ceiling, location 105 a.) NID b.) NID			
	S0007	B	Smooth plaster on ceiling, location 106 a.) NID b.) NID			
	S0007	C	Smooth plaster on ceiling, location 107 a.) NID CH < 0.5% b.) NID			
	S0007	D	Smooth plaster on wall, location 108 a.) NID b.) NID			
	S0007	E	Smooth plaster on wall, location 212 a.) NID b.) NID c.) NID			
	S0008	A	Drywall joint compound on ceiling, location 132 CH 0.5-5%			

(12)

BARK

**APPENDIX II**  
**Location List**

Client: Hamilton-Wentworth Catholic District Sch  
Building Name: Our Lady of the Assumption  
Survey Date: 2020-08-12

Site: 55 Highway 20, Stoney Creek, ON  
Last Re-Assessment: 2021-05-17

Location No.	Name or Description	Area ft <sup>2</sup>	Floor No.	Bldg. Phase	Notes
1	Presumed ACM	0		A	
100	Stage	0		A	
101	Gymnasium	0		A	
102	Corridor	0		A	
103	Gym Storage	0		A	
104	Foyer	0		A	
105	Kitchen	0		A	
106	Girl's Washroom	0		A	
107	Boy's Washroom	0		A	
108	Foyer	0		A	
109	Kindergarten	0		A	
110	Washroom	0		A	
111	Washroom	0		A	
112	Entrance	0		A	
113	Kindergarten 2	0		A	
114	Boiler Room	0		A	
115	Custodian Washroom	0		A	
116	Custodian	0		A	
117	Vestibule	0		A	
118	Closet	0		A	
119	Conference Room	0		A	
120	Front Entrance	0		A	
121	Front Entrance	0		A	
122	Unknown	0		A	
123	Closet	0		A	
124	Main Office	0		A	
125	Girl's Washroom	0		A	
126	Boy's Washroom	0		A	
127	Classroom 3	0		A	
128	Classroom 4	0		A	
129	Classroom 5	0		A	
130	Side Entrance	0		A	
131	Storage	0		A	
132	Stairwell Storage	0		A	
200	Special Ed 7	0		A	
201	Corridor	0		A	
202	Classroom 6	0		A	
203	Classroom 8	0		A	
204	Classroom 9	0		A	
205	Storage	0		A	
206	Storage	0		A	
207	Washroom	0		A	
209	Foyer	0		A	
210	Workroom	0		A	
211	Stairwell	0		A	
212	Staff Room	0		A	
213	Washroom	0		A	
214	Classroom 12	0		A	
215	Supply Room	0		A	
216	Classroom 13	0		A	
217	Stairwell	0		A	
218	Stairwell	0		A	

**APPENDIX III**

**Hazardous Materials Summary / Sample Log Report**



Client: Hamilton-Wentworth Catholic District Sch

Site: 55 Highway 20, Stoney Creek, ON

Building Name: Our Lady of the Assumption

Survey Date: 2020-08-12

HAZMAT	Sample No	System/Component/Material/Sample Description	Locations	Bldg. Phase	LF	SF	EA	%	Type	Positive	Friability
Asbestos	V0001	Ceiling   Acoustic Tile   Ceiling Tiles (lay-in)   2x4 Medium Fissure Random Pinhole (mte Sample 38313-100-s01)	102,201	A	0	0	0	0	None Detected	No	
Asbestos	V0002	Ceiling   Acoustic Tile   Ceiling Tiles (lay-in)   2x4 Textured Pinhole (mte Sample 38313-100-s02)	104,130,212	A	0	0	0	0	None Detected	No	
Asbestos	V0003	Ceiling   Acoustic Tile   Ceiling Tiles (lay-in)   2x4 Short Fissure Random Pinhole (mte Sample 38313-100-s03)	115,116	A	0	0	0	0	None Detected	No	
Asbestos	V0004	Floor     Vinyl Floor Tile   9x9 Red With White Streak (mte Sample 38981-100-s03)	116,117,202,209	A	0	0	0	100	Chrysotile	Yes	NF
Asbestos	V0005	Floor     Vinyl Floor Tile   12x12 Grey Dense Fleck (mte 38981-100-s02)	124,127,204	A	0	0	0	0	None Detected	No	
Asbestos	V0006	Piping     Parging Cement   (mte Sample 38981-100-s06)	100,102,103,127,201,215	A	0	0	94	0	Chrysotile	Yes	F
Asbestos	S0007 ABCDE	Ceiling, Wall, Ceiling, Wall   Bulkhead   Plaster   Smooth	105,106,107,108,110,111,131,212,213,217	A	0	0	0	0	Chrysotile	No	
Asbestos	S0008 ABC	Ceiling, Wall     Drywall And Joint Compound	132,200	A	0	0	0	0	Chrysotile	Yes	NF
Asbestos	S0009 ABC	Piping     Sweatwrap	201	A	30	0	0	0	None Detected	No	
Asbestos	V9500	Ceiling   Acoustic Tile   Ceiling Tiles (lay-in)   2x4 Short Fissure Random Pinhole	101	A	0	0	0	0	Presumed Asbestos	Yes	PF
Asbestos	V9500	Floor     Mastix	116,117,124,127,204,209,218	A	0	0	0	0	Presumed Asbestos	Yes	NF
Asbestos	V9500	Floor     Vinyl Floor Tile And Mastix   12x12 Aqua Dense Fleck, 12x12 Beige With Brown And White Streak, 12x12 Beige With Brown Streak, 12x12 Black Dense Fleck, 12x12 Cream With Rose Fleck, 12x12 Grey With White And Black Fleck, 12x12 Salmon, 12x12 Tan With White Streak, 12x12 White With Black And Grey Fleck, 12x12 White With Black Streak, 9x9 Blue With White Streak, 9x9 Blue With White Streaks, 9x9 Brown With White Fleck, 9x9 Grey With White And Black Fleck, 9x9 Tan With White Streak	100,101,103,109,113,119,123,128,200,201,202,203,207,210,211,212,214,215,216,217	A	0	0	0	100	Presumed Asbestos	Yes	NF
Asbestos	V9500	Other   Light Fixture   Paper   Heat Shield	117,207,209	A	0	0	3	0	Presumed Asbestos	Yes	NF
Asbestos	V9500	Wall     Drywall And Joint Compound   Partition Wall	127	A	0	0	0	0	Presumed Asbestos	Yes	NF
Asbestos	V0000	Ceiling   Acoustic Tile   Ceiling Tiles (lay-in)   2x4 Fibreglass	109,112,117,118,122,130,207,209	A	0	0	0	0	Non Asbestos	No	

HAZMAT	Sample No	System/Component/Material/Sample Description	Locations	Bldg. Phase	LF	SF	EA	%	Type	Positive	Friability
Asbestos	V0000	Floor     Vinyl Floor Tile   12x12 Beige With Dense Fleck (installed 2014)	218	A	0	0	0	0	Non Asbestos	No	
Asbestos	V0000	Floor     Vinyl Floor Tile And Mastic   12x12 Beige Dense Fleck (installed 2014)	129	A	0	0	0	0	Non Asbestos	No	

## Legend:

Sample number		Units			
S####	Asbestos sample collected	SF	Square feet	NF	Non Friable material.
L####	Paint sample collected	LF	Linear feet	F	Friable material
P####	PCB sample collected	EA	Each	PF	Potentially Friable material
M####	Mould sample collected	%	Percentage		
V####	Material visually similar to numbered sample collected				
V0000	Known non Hazardous Material				
V9000	Material is visually identified as Hazardous Material				
V9500	Material is presumed to be Hazardous Material				
[Loc. No.]	Abated Material				

**APPENDIX IV**  
**All Data Report**

ALL DATA REPORT

**Client:** Hamilton-Wentworth Catholic District Sch  
**Location:** #100 : Stage  
**Survey Date:** 2020-08-12

**Site:** Elementary  
**Floor:**

**Building Name:** Our Lady of the Assumption  
**Room #:**  
**Last Re-Assessment:** 2021-05-17

**Area (sqft):** 0

ASBESTOS																
System	Component	Material	Item	Covering	A*	V*	AP*	Good	Fair	Poor	Unit	Sample	Asbestos Type	Amount	Hazard	Friable
Duct		Not Insulated			C	Y										
Floor		Wood			A	Y										
Floor		Vinyl Floor Tile and Mastic, 9x9 brown with white fleck			A	Y		100(7)			%	V9500	Presumed Asbestos		Presumed Asbestos	NF
Piping		Parging Cement	Fitting		C	Y		7(7)			EA	V0006	Chrysotile	50-75%	Confirmed Asbestos	F
Structure	Deck	Concrete (poured)			C	Y										
Wall		Masonry, concrete block			A	Y										

**Client:** Hamilton-Wentworth Catholic District Sch  
**Location:** #101 : Gymnasium  
**Survey Date:** 2020-08-12

**Site:** Elementary  
**Floor:**

**Building Name:** Our Lady of the Assumption  
**Room #:**  
**Last Re-Assessment:** 2021-05-17

**Area (sqft):** 0

ASBESTOS																
System	Component	Material	Item	Covering	A*	V*	AP*	Good	Fair	Poor	Unit	Sample	Asbestos Type	Amount	Hazard	Friable
Ceiling	Acoustic Tile	Ceiling Tiles (lay-in), 2x4 short fissure random pinhole			C	Y						V9500	Presumed Asbestos		Presumed Asbestos	PF
Floor		Vinyl Floor Tile and Mastic, 9x9 brown with white fleck			A	Y		100(7)			%	V9500	Presumed Asbestos		Presumed Asbestos	NF
Floor		Vinyl Floor Tile and Mastic, 12x12 cream with rose fleck			A	Y						V9500	Presumed Asbestos		Presumed Asbestos	NF
Structure		Concrete (poured)			C	Y										
Wall		Masonry, concrete block			A	Y										

ALL DATA REPORT

**Client:** Hamilton-Wentworth Catholic District Sch  
**Location:** #102 : Corridor  
**Survey Date:** 2020-08-12

**Site:** Elementary  
**Floor:**

**Building Name:** Our Lady of the Assumption  
**Room #:**  
**Last Re-Assessment:** 2021-05-17

**Area (sqft):** 0

ASBESTOS																
System	Component	Material	Item	Covering	A*	V*	AP*	Good	Fair	Poor	Unit	Sample	Asbestos Type	Amount	Hazard	Friable
Ceiling	Acoustic Tile	Ceiling Tiles (lay-in), 2x4 medium fissure random pinhole			C	Y						V0001	None Detected	N.D.	None	
Floor		Terrazzo			A	Y										
Piping		Parging Cement	Fitting		C	N		49(7)	8(7)	1(4)	EA	V0006	Chrysotile	50-75%	Confirmed Asbestos	F
Wall		Masonry, concrete block			A	Y										

**Client:** Hamilton-Wentworth Catholic District Sch  
**Location:** #103 : Gym Storage  
**Survey Date:** 2020-08-12

**Site:** Elementary  
**Floor:**

**Building Name:** Our Lady of the Assumption  
**Room #:**  
**Last Re-Assessment:** 2021-05-17

**Area (sqft):** 0

ASBESTOS																
System	Component	Material	Item	Covering	A*	V*	AP*	Good	Fair	Poor	Unit	Sample	Asbestos Type	Amount	Hazard	Friable
Ceiling		Masonry, concrete block			C	Y										
Floor		Vinyl Floor Tile and Mastic, 12x12 cream with rose fleck			A	Y						V9500	Presumed Asbestos		Presumed Asbestos	NF
Piping		Parging Cement	Fitting		C	N		18(7)			EA	V0006	Chrysotile	50-75%	Confirmed Asbestos	F
Wall		Masonry, concrete block			A	Y										

# ALL DATA REPORT

**Client:** Hamilton-Wentworth Catholic District Sch  
**Location:** #104 : Foyer  
**Survey Date:** 2020-08-12

**Site:** Elementary  
**Floor:**

**Building Name:** Our Lady of the Assumption  
**Room #:**  
**Last Re-Assessment:** 2021-05-17

**Area (sqft):** 0

ASBESTOS																
System	Component	Material	Item	Covering	A*	V*	AP*	Good	Fair	Poor	Unit	Sample	Asbestos Type	Amount	Hazard	Friable
Ceiling	Acoustic Tile	Ceiling Tiles (lay-in), 2x4 textured pinhole			C	Y						V0002	None Detected	N.D.	None	
Floor		Terrazzo			A	Y										
Wall		Masonry, concrete block			A	Y										

**Client:** Hamilton-Wentworth Catholic District Sch  
**Location:** #105 : Kitchen  
**Survey Date:** 2020-08-12

**Site:** Elementary  
**Floor:**

**Building Name:** Our Lady of the Assumption  
**Room #:**  
**Last Re-Assessment:** 2021-05-17

**Area (sqft):** 0

ASBESTOS																
System	Component	Material	Item	Covering	A*	V*	AP*	Good	Fair	Poor	Unit	Sample	Asbestos Type	Amount	Hazard	Friable
Ceiling		Plaster, Smooth			C	Y						S0007A	Chrysotile	<0.5%	None	
Floor		Terrazzo			A	Y										
Wall		Plaster, Smooth			A	Y						V0007	Chrysotile	<0.5%	None	
Wall		Masonry, concrete block			A	Y										

# ALL DATA REPORT

**Client:** Hamilton-Wentworth Catholic District Sch  
**Location:** #106 : Girl's Washroom  
**Survey Date:** 2020-08-12

**Site:** Elementary  
**Floor:**

**Building Name:** Our Lady of the Assumption  
**Room #:**  
**Last Re-Assessment:** 2021-05-17

**Area (sqft):** 0

ASBESTOS																
System	Component	Material	Item	Covering	A*	V*	AP*	Good	Fair	Poor	Unit	Sample	Asbestos Type	Amount	Hazard	Friable
Ceiling		Plaster, Smooth			C	Y						S0007B	Chrysotile	<0.5%	None	
Floor		Terrazzo			A	Y										
Wall		Plaster, Smooth			A	Y						V0007	Chrysotile	<0.5%	None	
Wall		Masonry, concrete block			A	Y										

**Client:** Hamilton-Wentworth Catholic District Sch  
**Location:** #107 : Boy's Washroom  
**Survey Date:** 2020-08-12

**Site:** Elementary  
**Floor:**

**Building Name:** Our Lady of the Assumption  
**Room #:**  
**Last Re-Assessment:** 2021-05-17

**Area (sqft):** 0

ASBESTOS																
System	Component	Material	Item	Covering	A*	V*	AP*	Good	Fair	Poor	Unit	Sample	Asbestos Type	Amount	Hazard	Friable
Ceiling		Plaster, Smooth			C	Y						S0007C	Chrysotile	<0.5%	None	
Floor		Terrazzo			A	Y										
Wall		Plaster, Smooth			A	Y						V0007	Chrysotile	<0.5%	None	
Wall		Masonry, concrete block			A	Y										



# ALL DATA REPORT

**Client:** Hamilton-Wentworth Catholic District Sch  
**Location:** #108 : Foyer  
**Survey Date:** 2020-08-12

**Site:** Elementary  
**Floor:**

**Building Name:** Our Lady of the Assumption  
**Room #:**  
**Last Re-Assessment:** 2021-05-17

**Area (sqft):** 0

ASBESTOS																
System	Component	Material	Item	Covering	A*	V*	AP*	Good	Fair	Poor	Unit	Sample	Asbestos Type	Amount	Hazard	Friable
Ceiling		Masonry, concrete block			C	Y										
Floor		Terrazzo			A	Y										
Wall		Plaster, Smooth, above door			C	Y						S0007D	Chrysotile	<0.5%	None	
Wall		Masonry, concrete block			A	Y										

**Client:** Hamilton-Wentworth Catholic District Sch  
**Location:** #109 : Kindergarten  
**Survey Date:** 2020-08-12

**Site:** Elementary  
**Floor:**

**Building Name:** Our Lady of the Assumption  
**Room #:**  
**Last Re-Assessment:** 2021-05-17

**Area (sqft):** 0

ASBESTOS																
System	Component	Material	Item	Covering	A*	V*	AP*	Good	Fair	Poor	Unit	Sample	Asbestos Type	Amount	Hazard	Friable
Ceiling	Acoustic Tile	Ceiling Tiles (lay-in), 2x4 fibreglass			C	Y						V0000	Non-Asbestos		None	
Ceiling		Masonry, concrete block			C	Y										
Floor		Vinyl Floor Tile and Mastic, 12x12 cream with rose fleck			A	Y						V9500	Presumed Asbestos		Presumed Asbestos	NF
Floor		Vinyl Floor Tile and Mastic, 12x12 black dense fleck			A	Y						V9500	Presumed Asbestos		Presumed Asbestos	NF
Floor		Vinyl Floor Tile and Mastic, 12x12 beige with brown and white streak			A	Y						V9500	Presumed Asbestos		Presumed Asbestos	NF
Wall		Masonry, concrete block			A	Y										

# ALL DATA REPORT

**Client:** Hamilton-Wentworth Catholic District Sch  
**Location:** #110 : Washroom  
**Survey Date:** 2020-08-12

**Site:** Elementary  
**Floor:**

**Building Name:** Our Lady of the Assumption  
**Room #:**  
**Last Re-Assessment:** 2021-05-17

**Area (sqft):** 0

ASBESTOS																
System	Component	Material	Item	Covering	A*	V*	AP*	Good	Fair	Poor	Unit	Sample	Asbestos Type	Amount	Hazard	Friable
Ceiling		Plaster			C	Y						V0007	Chrysotile	<0.5%	None	
Floor		Terrazzo			A	Y										
Wall		Plaster			A	Y						V0007	Chrysotile	<0.5%	None	
Wall		Masonry, concrete block			A	Y										

**Client:** Hamilton-Wentworth Catholic District Sch  
**Location:** #111 : Washroom  
**Survey Date:** 2020-08-12

**Site:** Elementary  
**Floor:**

**Building Name:** Our Lady of the Assumption  
**Room #:**  
**Last Re-Assessment:** 2021-05-17

**Area (sqft):** 0

ASBESTOS																
System	Component	Material	Item	Covering	A*	V*	AP*	Good	Fair	Poor	Unit	Sample	Asbestos Type	Amount	Hazard	Friable
Ceiling		Plaster			C	Y						V0007	Chrysotile	<0.5%	None	
Floor		Terrazzo			A	Y										
Wall		Plaster			A	Y						V0007	Chrysotile	<0.5%	None	
Wall		Masonry, concrete block			A	Y										

# ALL DATA REPORT

**Client:** Hamilton-Wentworth Catholic District Sch  
**Location:** #112 : Entrance  
**Survey Date:** 2020-08-12

**Site:** Elementary  
**Floor:**

**Building Name:** Our Lady of the Assumption  
**Room #:**  
**Last Re-Assessment:** 2021-05-17

**Area (sqft):** 0

ASBESTOS																
System	Component	Material	Item	Covering	A*	V*	AP*	Good	Fair	Poor	Unit	Sample	Asbestos Type	Amount	Hazard	Friable
Ceiling	Acoustic Tile	Ceiling Tiles (lay-in), 2x4 fibreglass			C	Y						V0000	Non-Asbestos		None	
Floor		Ceramic Tiles			A	Y										
Floor		Terrazzo			A	Y										
Wall		Masonry, concrete block			A	Y										

**Client:** Hamilton-Wentworth Catholic District Sch  
**Location:** #113 : Kindergarten 2  
**Survey Date:** 2020-08-12

**Site:** Elementary  
**Floor:**

**Building Name:** Our Lady of the Assumption  
**Room #:**  
**Last Re-Assessment:** 2021-05-17

**Area (sqft):** 0

ASBESTOS																
System	Component	Material	Item	Covering	A*	V*	AP*	Good	Fair	Poor	Unit	Sample	Asbestos Type	Amount	Hazard	Friable
Ceiling		Masonry, concrete block			C	Y										
Floor		Vinyl Floor Tile and Mastic, 12x12 cream with rose fleck			A	Y						V9500	Presumed Asbestos		Presumed Asbestos	NF
Floor		Vinyl Floor Tile and Mastic, 12x12 black dense fleck			A	Y						V9500	Presumed Asbestos		Presumed Asbestos	NF
Floor		Vinyl Floor Tile and Mastic, 12x12 beige with brown and white streak			A	Y						V9500	Presumed Asbestos		Presumed Asbestos	NF
Other	Sink	Mastic, Gold, undercoating			A	N		1			EA	V9500	[None]		[Abated]	
Wall		Masonry, concrete block			A	Y										

# ALL DATA REPORT

**Client:** Hamilton-Wentworth Catholic District Sch  
**Location:** #114 : Boiler Room  
**Survey Date:** 2020-08-12

**Site:** Elementary  
**Floor:**

**Building Name:** Our Lady of the Assumption  
**Room #:**  
**Last Re-Assessment:** 2021-05-17

**Area (sqft):** 0

ASBESTOS																
System	Component	Material	Item	Covering	A*	V*	AP*	Good	Fair	Poor	Unit	Sample	Asbestos Type	Amount	Hazard	Friable
Ceiling		Masonry, concrete block			C	Y										
Floor		Concrete (poured)			A	Y										
Piping		Fibreglass	Insulation		C	Y										
Wall		Masonry, concrete block			A	Y										

**Client:** Hamilton-Wentworth Catholic District Sch  
**Location:** #115 : Custodian Washroom  
**Survey Date:** 2020-08-12

**Site:** Elementary  
**Floor:**

**Building Name:** Our Lady of the Assumption  
**Room #:**  
**Last Re-Assessment:** 2021-05-17

**Area (sqft):** 0

ASBESTOS																
System	Component	Material	Item	Covering	A*	V*	AP*	Good	Fair	Poor	Unit	Sample	Asbestos Type	Amount	Hazard	Friable
Ceiling	Acoustic Tile	Ceiling Tiles (lay-in), 2x4 short fissure random pinhole			C	Y						V0003	None Detected	N.D.	None	
Floor		Terrazzo			A	Y										
Wall		Masonry, concrete block			A	Y										

ALL DATA REPORT

**Client:** Hamilton-Wentworth Catholic District Sch  
**Location:** #116 : Custodian  
**Survey Date:** 2020-08-12

**Site:** Elementary  
**Floor:**

**Building Name:** Our Lady of the Assumption  
**Room #:**  
**Last Re-Assessment:** 2021-05-17

**Area (sqft):** 0

ASBESTOS																
System	Component	Material	Item	Covering	A*	V*	AP*	Good	Fair	Poor	Unit	Sample	Asbestos Type	Amount	Hazard	Friable
Ceiling	Acoustic Tile	Ceiling Tiles (lay-in), 2x4 short fissure random pinhole			C	Y						V0003	None Detected	N.D.	None	
Ceiling		Masonry, concrete block			C	Y										
Floor		Mastic		Vinyl Floor Tile	D	N						V9500	Presumed Asbestos		Presumed Asbestos	NF
Floor		Vinyl Floor Tile, 9x9 red with white streak			A	Y		100(7)			%	V0004	Chrysotile	0.5-5%	Confirmed Asbestos	NF
Wall		Masonry, concrete block			A	Y										

**Client:** Hamilton-Wentworth Catholic District Sch  
**Location:** #117 : Vestibule  
**Survey Date:** 2020-08-12

**Site:** Elementary  
**Floor:**

**Building Name:** Our Lady of the Assumption  
**Room #:**  
**Last Re-Assessment:** 2021-05-17

**Area (sqft):** 0

ASBESTOS																
System	Component	Material	Item	Covering	A*	V*	AP*	Good	Fair	Poor	Unit	Sample	Asbestos Type	Amount	Hazard	Friable
Ceiling	Acoustic Tile	Ceiling Tiles (lay-in), 2x4 fibreglass			C	Y						V0000	Non-Asbestos		None	
Floor		Mastic		Vinyl Floor Tile	D	N						V9500	Presumed Asbestos		Presumed Asbestos	NF
Floor		Vinyl Floor Tile, 9x9 red with white streak			A	Y		100(7)			%	V0004	Chrysotile	0.5-5%	Confirmed Asbestos	NF
Other	Light Fixture	Paper, heat shield			C	Y		1(7)			EA	V9500	Presumed Asbestos		Presumed Asbestos	NF
Wall		Masonry, concrete block			A	Y										

# ALL DATA REPORT

**Client:** Hamilton-Wentworth Catholic District Sch  
**Location:** #118 : Closet  
**Survey Date:** 2020-08-12

**Site:** Elementary  
**Floor:**

**Building Name:** Our Lady of the Assumption  
**Room #:**  
**Last Re-Assessment:** 2021-05-17

**Area (sqft):** 0

ASBESTOS																
System	Component	Material	Item	Covering	A*	V*	AP*	Good	Fair	Poor	Unit	Sample	Asbestos Type	Amount	Hazard	Friable
Ceiling	Acoustic Tile	Ceiling Tiles (lay-in), 2x4 fibreglass			C	Y						V0000	Non-Asbestos		None	
Floor		Terrazzo			A	Y										
Wall		Masonry, concrete block			A	Y										

**Client:** Hamilton-Wentworth Catholic District Sch  
**Location:** #119 : Conference Room  
**Survey Date:** 2020-08-12

**Site:** Elementary  
**Floor:**

**Building Name:** Our Lady of the Assumption  
**Room #:**  
**Last Re-Assessment:** 2021-05-17

**Area (sqft):** 0

ASBESTOS																
System	Component	Material	Item	Covering	A*	V*	AP*	Good	Fair	Poor	Unit	Sample	Asbestos Type	Amount	Hazard	Friable
Ceiling		Masonry, concrete block			C	Y										
Floor		Vinyl Floor Tile and Mastic, 9x9 blue with white streak			A	Y						V9500	Presumed Asbestos		Presumed Asbestos	NF
Wall		Masonry, concrete block			A	Y										

# ALL DATA REPORT

**Client:** Hamilton-Wentworth Catholic District Sch  
**Location:** #120 : Front Entrance  
**Survey Date:** 2020-08-12

**Site:** Elementary  
**Floor:**

**Building Name:** Our Lady of the Assumption  
**Room #:**  
**Last Re-Assessment:** 2021-05-17

**Area (sqft):** 0

ASBESTOS																
System	Component	Material	Item	Covering	A*	V*	AP*	Good	Fair	Poor	Unit	Sample	Asbestos Type	Amount	Hazard	Friable
Ceiling		Masonry, concrete block			C	Y										
Floor		Terrazzo			A	Y										
Wall		Masonry, concrete block			A	Y										

**Client:** Hamilton-Wentworth Catholic District Sch  
**Location:** #121 : Front Entrance  
**Survey Date:** 2020-08-12

**Site:** Elementary  
**Floor:**

**Building Name:** Our Lady of the Assumption  
**Room #:**  
**Last Re-Assessment:** 2021-05-17

**Area (sqft):** 0

ASBESTOS																
System	Component	Material	Item	Covering	A*	V*	AP*	Good	Fair	Poor	Unit	Sample	Asbestos Type	Amount	Hazard	Friable
Ceiling		Masonry, concrete block			C	Y										
Floor		Terrazzo			A	Y										
Wall		Masonry, concrete block			A	Y										

# ALL DATA REPORT

**Client:** Hamilton-Wentworth Catholic District Sch  
**Location:** #122 : Unknown  
**Survey Date:** 2020-08-12

**Site:** Elementary  
**Floor:**

**Building Name:** Our Lady of the Assumption  
**Room #:**  
**Last Re-Assessment:** 2021-05-17

**Area (sqft):** 0

ASBESTOS																
System	Component	Material	Item	Covering	A*	V*	AP*	Good	Fair	Poor	Unit	Sample	Asbestos Type	Amount	Hazard	Friable
Ceiling	Acoustic Tile	Ceiling Tiles (lay-in), 2x4 fibreglass			C	Y						V0000	Non-Asbestos		None	
Floor		Terrazzo			A	Y										
Wall		Masonry, concrete block			A	Y										

**Client:** Hamilton-Wentworth Catholic District Sch  
**Location:** #123 : Closet  
**Survey Date:** 2020-08-12

**Site:** Elementary  
**Floor:**

**Building Name:** Our Lady of the Assumption  
**Room #:**  
**Last Re-Assessment:** 2021-05-17

**Area (sqft):** 0

ASBESTOS																
System	Component	Material	Item	Covering	A*	V*	AP*	Good	Fair	Poor	Unit	Sample	Asbestos Type	Amount	Hazard	Friable
Ceiling		Masonry, concrete block			C	Y										
Floor		Vinyl Floor Tile and Mastic, 9x9 blue with white streak			A	Y						V9500	Presumed Asbestos		Presumed Asbestos	NF
Wall		Masonry, concrete block			A	Y										



ALL DATA REPORT

**Client:** Hamilton-Wentworth Catholic District Sch  
**Location:** #124 : Main Office  
**Survey Date:** 2020-08-12

**Site:** Elementary  
**Floor:**

**Building Name:** Our Lady of the Assumption  
**Room #:**  
**Last Re-Assessment:** 2021-05-17

**Area (sqft):** 0

ASBESTOS																
System	Component	Material	Item	Covering	A*	V*	AP*	Good	Fair	Poor	Unit	Sample	Asbestos Type	Amount	Hazard	Friable
Ceiling		Masonry, concrete block			C	Y										
Floor		Mastic		Vinyl Floor Tile	D	N						V9500	Presumed Asbestos		Presumed Asbestos	NF
Floor		Vinyl Floor Tile, 12x12 grey dense fleck										V0005	None Detected	N.D.	None	
Wall		Masonry, concrete block			A	Y										

**Client:** Hamilton-Wentworth Catholic District Sch  
**Location:** #125 : Girl's Washroom  
**Survey Date:** 2020-08-12

**Site:** Elementary  
**Floor:**

**Building Name:** Our Lady of the Assumption  
**Room #:**  
**Last Re-Assessment:** 2021-05-17

**Area (sqft):** 0

ASBESTOS																
System	Component	Material	Item	Covering	A*	V*	AP*	Good	Fair	Poor	Unit	Sample	Asbestos Type	Amount	Hazard	Friable
Ceiling		Masonry, concrete block			C	Y										
Floor		Terrazzo			A	Y										
Wall		Masonry, concrete block			A	Y										

# ALL DATA REPORT

**Client:** Hamilton-Wentworth Catholic District Sch  
**Location:** #126 : Boy's Washroom  
**Survey Date:** 2020-08-12

**Site:** Elementary  
**Floor:**

**Building Name:** Our Lady of the Assumption  
**Room #:**  
**Last Re-Assessment:** 2021-05-17

**Area (sqft):** 0

ASBESTOS																
System	Component	Material	Item	Covering	A*	V*	AP*	Good	Fair	Poor	Unit	Sample	Asbestos Type	Amount	Hazard	Friable
Ceiling		Masonry, concrete block			C	Y										
Floor		Terrazzo			A	Y										
Wall		Masonry, concrete block			A	Y										

**Client:** Hamilton-Wentworth Catholic District Sch  
**Location:** #127 : Classroom 3  
**Survey Date:** 2020-08-12

**Site:** Elementary  
**Floor:**

**Building Name:** Our Lady of the Assumption  
**Room #:**  
**Last Re-Assessment:** 2021-05-17

**Area (sqft):** 0

ASBESTOS																
System	Component	Material	Item	Covering	A*	V*	AP*	Good	Fair	Poor	Unit	Sample	Asbestos Type	Amount	Hazard	Friable
Ceiling		Masonry, concrete block			C	Y										
Floor		Mastic		Vinyl Floor Tile	D	N						V9500	Presumed Asbestos		Presumed Asbestos	NF
Floor		Vinyl Floor Tile, 12x12 grey dense fleck										V0005	None Detected	N.D.	None	
Piping		Parging Cement	Fitting		C	Y		4(7)			EA	V0006	Chrysotile	50-75%	Confirmed Asbestos	F
Wall		Drywall and joint compound, partition wall			A	Y						V9500	Presumed Asbestos		Presumed Asbestos	NF
Wall		Masonry, concrete block			A	Y										

# ALL DATA REPORT

**Client:** Hamilton-Wentworth Catholic District Sch  
**Location:** #128 : Classroom 4  
**Survey Date:** 2020-08-12

**Site:** Elementary  
**Floor:**

**Building Name:** Our Lady of the Assumption  
**Room #:**  
**Last Re-Assessment:** 2021-05-17

**Area (sqft):** 0

ASBESTOS																
System	Component	Material	Item	Covering	A*	V*	AP*	Good	Fair	Poor	Unit	Sample	Asbestos Type	Amount	Hazard	Friable
Ceiling		Masonry, concrete block			C	Y										
Floor		Vinyl Floor Tile and Mastic, 12x12 black dense fleck			A	Y						V9500	Presumed Asbestos		Presumed Asbestos	NF
Floor		Vinyl Floor Tile and Mastic, 12x12 white with black streak			A	Y						V9500	Presumed Asbestos		Presumed Asbestos	NF
Floor		Vinyl Floor Tile and Mastic, 12x12 white with black and grey fleck			A	Y						V9500	Presumed Asbestos		Presumed Asbestos	NF
Wall		Masonry, concrete block			A	Y										

**Client:** Hamilton-Wentworth Catholic District Sch  
**Location:** #129 : Classroom 5  
**Survey Date:** 2020-08-12

**Site:** Elementary  
**Floor:**

**Building Name:** Our Lady of the Assumption  
**Room #:**  
**Last Re-Assessment:** 2021-05-17

**Area (sqft):** 0

ASBESTOS																
System	Component	Material	Item	Covering	A*	V*	AP*	Good	Fair	Poor	Unit	Sample	Asbestos Type	Amount	Hazard	Friable
Ceiling		Masonry, concrete block			C	Y										
Floor		Vinyl Floor Tile and Mastic, 12x12 beige dense fleck (installed 2014)			A	Y						V0000	Non-Asbestos		None	
Wall		Masonry, concrete block			A	Y										

ALL DATA REPORT

**Client:** Hamilton-Wentworth Catholic District Sch  
**Location:** #130 : Side Entrance  
**Survey Date:** 2020-08-12

**Site:** Elementary  
**Floor:**

**Building Name:** Our Lady of the Assumption  
**Room #:**  
**Last Re-Assessment:** 2021-05-17

**Area (sqft):** 0

ASBESTOS																
System	Component	Material	Item	Covering	A*	V*	AP*	Good	Fair	Poor	Unit	Sample	Asbestos Type	Amount	Hazard	Friable
Ceiling	Acoustic Tile	Ceiling Tiles (lay-in), 2x4 fibreglass			C	Y						V0000	Non-Asbestos		None	
Ceiling	Acoustic Tile	Ceiling Tiles (lay-in), 2x4 textured pinhole			C	Y						V0002	None Detected	N.D.	None	
Floor		Terrazzo			A	Y										
Wall		Masonry, concrete block			A	Y										

**Client:** Hamilton-Wentworth Catholic District Sch  
**Location:** #131 : Storage  
**Survey Date:** 2020-08-12

**Site:** Elementary  
**Floor:**

**Building Name:** Our Lady of the Assumption  
**Room #:**  
**Last Re-Assessment:** 2021-05-17

**Area (sqft):** 0

ASBESTOS																
System	Component	Material	Item	Covering	A*	V*	AP*	Good	Fair	Poor	Unit	Sample	Asbestos Type	Amount	Hazard	Friable
Ceiling		Plaster			C	Y						V0007	Chrysotile	<0.5%	None	
Floor		Terrazzo			A	Y										
Wall		Plaster			A	Y						V0007	Chrysotile	<0.5%	None	
Wall		Ceramic Tiles			A	Y										

# ALL DATA REPORT

**Client:** Hamilton-Wentworth Catholic District Sch  
**Location:** #132 : Stairwell Storage  
**Survey Date:** 2020-08-12

**Site:** Elementary  
**Floor:**

**Building Name:** Our Lady of the Assumption  
**Room #:**  
**Last Re-Assessment:** 2021-05-17

**Area (sqft):** 0

ASBESTOS																
System	Component	Material	Item	Covering	A*	V*	AP*	Good	Fair	Poor	Unit	Sample	Asbestos Type	Amount	Hazard	Friable
Ceiling		Drywall and joint compound			C	Y						S0008AB	Chrysotile	0.5-5%	Confirmed Asbestos	NF
Floor		Concrete (poured)			A	Y										
Wall		Masonry, concrete block			A	Y										

**Client:** Hamilton-Wentworth Catholic District Sch  
**Location:** #200 : Special Ed 7  
**Survey Date:** 2020-08-12

**Site:** Elementary  
**Floor:**

**Building Name:** Our Lady of the Assumption  
**Room #:**  
**Last Re-Assessment:** 2021-05-17

**Area (sqft):** 0

ASBESTOS																
System	Component	Material	Item	Covering	A*	V*	AP*	Good	Fair	Poor	Unit	Sample	Asbestos Type	Amount	Hazard	Friable
Ceiling		Masonry, concrete block			C	Y										
Floor		Vinyl Floor Tile and Mastic, 12x12 white with black and grey fleck			A	Y						V9500	Presumed Asbestos		Presumed Asbestos	NF
Wall		Drywall and joint compound			A	Y						S0008C	Chrysotile	0.5-5%	Confirmed Asbestos	NF
Wall		Masonry, concrete block			A	Y										

ALL DATA REPORT

**Client:** Hamilton-Wentworth Catholic District Sch  
**Location:** #201 : Corridor  
**Survey Date:** 2020-08-12

**Site:** Elementary  
**Floor:**

**Building Name:** Our Lady of the Assumption  
**Room #:**  
**Last Re-Assessment:** 2021-05-17

**Area (sqft):** 0

ASBESTOS																
System	Component	Material	Item	Covering	A*	V*	AP*	Good	Fair	Poor	Unit	Sample	Asbestos Type	Amount	Hazard	Friable
Ceiling	Acoustic Tile	Ceiling Tiles (lay-in), 2x4 medium fissure random pinhole			C	Y						V0001	None Detected	N.D.	None	
Floor		Vinyl Floor Tile and Mastic, 12x12 aqua dense fleck			A	Y						V9500	Presumed Asbestos		Presumed Asbestos	NF
Floor		Vinyl Floor Tile and Mastic, 12x12 beige with brown streak			A	Y						V9500	Presumed Asbestos		Presumed Asbestos	NF
Floor		Vinyl Floor Tile and Mastic, 9x9 tan with white streak			A	Y						V9500	Presumed Asbestos		Presumed Asbestos	NF
Piping		Parging Cement	Fitting		C	N		1(7)			EA	V0006	Chrysotile	50-75%	Confirmed Asbestos	F
Piping		Sweatwrap	Insulation		C	N		30			LF	S0009ABC	None Detected	N.D.	None	
Wall		Masonry, concrete block			A	Y										

**Client:** Hamilton-Wentworth Catholic District Sch  
**Location:** #202 : Classroom 6  
**Survey Date:** 2020-08-12

**Site:** Elementary  
**Floor:**

**Building Name:** Our Lady of the Assumption  
**Room #:**  
**Last Re-Assessment:** 2021-05-17

**Area (sqft):** 0

ASBESTOS																
System	Component	Material	Item	Covering	A*	V*	AP*	Good	Fair	Poor	Unit	Sample	Asbestos Type	Amount	Hazard	Friable
Ceiling		Masonry, concrete block			C	Y										
Floor		Vinyl Floor Tile and Mastic, 12x12 white with black and grey fleck			A	Y						V9500	Presumed Asbestos		Presumed Asbestos	NF
Floor		Vinyl Floor Tile, 9x9 red with white streak			A	Y						V0004	Chrysotile	0.5-5%	Confirmed Asbestos	NF
Wall		Masonry, concrete block			A	Y										

ALL DATA REPORT

**Client:** Hamilton-Wentworth Catholic District Sch  
**Location:** #203 : Classroom 8  
**Survey Date:** 2020-08-12

**Site:** Elementary  
**Floor:**

**Building Name:** Our Lady of the Assumption  
**Room #:**  
**Last Re-Assessment:** 2021-05-17

**Area (sqft):** 0

ASBESTOS																
System	Component	Material	Item	Covering	A*	V*	AP*	Good	Fair	Poor	Unit	Sample	Asbestos Type	Amount	Hazard	Friable
Ceiling		Masonry, concrete block			C	Y										
Floor		Vinyl Floor Tile and Mastic, 12x12 white with black and grey fleck			A	Y						V9500	Presumed Asbestos		Presumed Asbestos	NF
Floor		Carpet			A	Y										
Wall		Masonry, concrete block			A	Y										

**Client:** Hamilton-Wentworth Catholic District Sch  
**Location:** #204 : Classroom 9  
**Survey Date:** 2020-08-12

**Site:** Elementary  
**Floor:**

**Building Name:** Our Lady of the Assumption  
**Room #:**  
**Last Re-Assessment:** 2021-05-17

**Area (sqft):** 0

ASBESTOS																
System	Component	Material	Item	Covering	A*	V*	AP*	Good	Fair	Poor	Unit	Sample	Asbestos Type	Amount	Hazard	Friable
Ceiling		Masonry, concrete block			C	Y										
Floor		Mastic		Vinyl Floor Tile	D	N						V9500	Presumed Asbestos		Presumed Asbestos	NF
Floor		Vinyl Floor Tile, 12x12 grey dense fleck			A	Y						V0005	None Detected	N.D.	None	
Wall		Masonry, concrete block			A	Y										

# ALL DATA REPORT

**Client:** Hamilton-Wentworth Catholic District Sch  
**Location:** #205 : Storage  
**Survey Date:** 2020-08-12

**Site:** Elementary  
**Floor:**

**Building Name:** Our Lady of the Assumption  
**Room #:**  
**Last Re-Assessment:** 2021-05-17

**Area (sqft):** 0

ASBESTOS																
System	Component	Material	Item	Covering	A*	V*	AP*	Good	Fair	Poor	Unit	Sample	Asbestos Type	Amount	Hazard	Friable
Ceiling		Masonry, concrete block			C	Y										
Floor		Concrete (poured)			A	Y										
Wall		Masonry, concrete block			A	Y										

**Client:** Hamilton-Wentworth Catholic District Sch  
**Location:** #206 : Storage  
**Survey Date:** 2020-08-12

**Site:** Elementary  
**Floor:**

**Building Name:** Our Lady of the Assumption  
**Room #:**  
**Last Re-Assessment:** 2021-05-17

**Area (sqft):** 0

ASBESTOS																
System	Component	Material	Item	Covering	A*	V*	AP*	Good	Fair	Poor	Unit	Sample	Asbestos Type	Amount	Hazard	Friable
Ceiling		Masonry, concrete block			C	Y										
Floor		Concrete (poured)			A	Y										
Wall		Masonry, concrete block			A	Y										



ALL DATA REPORT

**Client:** Hamilton-Wentworth Catholic District Sch  
**Location:** #207 : Washroom  
**Survey Date:** 2020-08-12

**Site:** Elementary  
**Floor:**

**Building Name:** Our Lady of the Assumption  
**Room #:**  
**Last Re-Assessment:** 2021-05-17

**Area (sqft):** 0

ASBESTOS																
System	Component	Material	Item	Covering	A*	V*	AP*	Good	Fair	Poor	Unit	Sample	Asbestos Type	Amount	Hazard	Friable
Ceiling	Acoustic Tile	Ceiling Tiles (lay-in), 2x4 fibreglass			C	Y						V0000	Non-Asbestos		None	
Floor		Vinyl Floor Tile and Mastic, 9x9 blue with white streaks			A	Y						V9500	Presumed Asbestos		Presumed Asbestos	NF
Other	Light Fixture	Paper, heat shield			C	Y		1(7)			EA	V9500	Presumed Asbestos		Presumed Asbestos	NF
Wall		Masonry, concrete block			A	Y										

**Client:** Hamilton-Wentworth Catholic District Sch  
**Location:** #209 : Foyer  
**Survey Date:** 2020-08-12

**Site:** Elementary  
**Floor:**

**Building Name:** Our Lady of the Assumption  
**Room #:**  
**Last Re-Assessment:** 2021-05-17

**Area (sqft):** 0

ASBESTOS																
System	Component	Material	Item	Covering	A*	V*	AP*	Good	Fair	Poor	Unit	Sample	Asbestos Type	Amount	Hazard	Friable
Ceiling	Acoustic Tile	Ceiling Tiles (lay-in), 2x4 fibreglass			C	Y						V0000	Non-Asbestos		None	
Floor		Mastic		Vinyl Floor Tile	D	N						V9500	Presumed Asbestos		Presumed Asbestos	NF
Floor		Vinyl Floor Tile, 9x9 red with white streak			A	Y		100(7)			%	V0004	Chrysotile	0.5-5%	Confirmed Asbestos	NF
Other	Light Fixture	Paper, heat shield			C	Y		1(7)			EA	V9500	Presumed Asbestos		Presumed Asbestos	NF
Wall		Masonry, concrete block			A	Y										

# ALL DATA REPORT

**Client:** Hamilton-Wentworth Catholic District Sch  
**Location:** #210 : Workroom  
**Survey Date:** 2020-08-12

**Site:** Elementary  
**Floor:**

**Building Name:** Our Lady of the Assumption  
**Room #:**  
**Last Re-Assessment:** 2021-05-17

**Area (sqft):** 0

ASBESTOS																
System	Component	Material	Item	Covering	A*	V*	AP*	Good	Fair	Poor	Unit	Sample	Asbestos Type	Amount	Hazard	Friable
Ceiling		Masonry, concrete block			C	Y										
Floor		Vinyl Floor Tile and Mastic, 12x12 white with black and grey fleck			A	Y						V9500	Presumed Asbestos		Presumed Asbestos	NF
Wall		Masonry, concrete block			A	Y										

**Client:** Hamilton-Wentworth Catholic District Sch  
**Location:** #211 : Stairwell  
**Survey Date:** 2020-08-12

**Site:** Elementary  
**Floor:**

**Building Name:** Our Lady of the Assumption  
**Room #:**  
**Last Re-Assessment:** 2021-05-17

**Area (sqft):** 0

ASBESTOS																
System	Component	Material	Item	Covering	A*	V*	AP*	Good	Fair	Poor	Unit	Sample	Asbestos Type	Amount	Hazard	Friable
Ceiling		Masonry, concrete block			C	Y										
Floor		Vinyl Floor Tile and Mastic, 9x9 grey with white and black fleck			A	Y						V9500	Presumed Asbestos		Presumed Asbestos	NF
Floor		Vinyl Floor Tile and Mastic, 12x12 tan with white streak			A	Y						V9500	Presumed Asbestos		Presumed Asbestos	NF
Wall		Masonry, concrete block			A	Y										

ALL DATA REPORT

**Client:** Hamilton-Wentworth Catholic District Sch  
**Location:** #212 : Staff Room  
**Survey Date:** 2020-08-12

**Site:** Elementary  
**Floor:**

**Building Name:** Our Lady of the Assumption  
**Room #:**  
**Last Re-Assessment:** 2021-05-17

**Area (sqft):** 0

ASBESTOS																
System	Component	Material	Item	Covering	A*	V*	AP*	Good	Fair	Poor	Unit	Sample	Asbestos Type	Amount	Hazard	Friable
Ceiling	Acoustic Tile	Ceiling Tiles (lay-in), 2x4 textured pinhole			C	Y						V0002	None Detected	N.D.	None	
Ceiling	Bulkhead	Plaster, Smooth			C	Y						V0007	Chrysotile	<0.5%	None	
Floor		Vinyl Floor Tile and Mastic, 12x12 cream with rose fleck			A	Y						V9500	Presumed Asbestos		Presumed Asbestos	NF
Wall		Plaster, Smooth			A	Y						S0007E	Chrysotile	<0.5%	None	
Wall		Masonry, concrete block			A	Y										

**Client:** Hamilton-Wentworth Catholic District Sch  
**Location:** #213 : Washroom  
**Survey Date:** 2020-08-12

**Site:** Elementary  
**Floor:**

**Building Name:** Our Lady of the Assumption  
**Room #:**  
**Last Re-Assessment:** 2021-05-17

**Area (sqft):** 0

ASBESTOS																
System	Component	Material	Item	Covering	A*	V*	AP*	Good	Fair	Poor	Unit	Sample	Asbestos Type	Amount	Hazard	Friable
Ceiling		Plaster			C	Y						V0007	Chrysotile	<0.5%	None	
Floor		Terrazzo			A	Y										
Other	Light Fixture	Paper, heat shield			C	Y		1			EA	V9500	[None]		[Abated]	
Wall		Plaster			A	Y						V0007	Chrysotile	<0.5%	None	
Wall		Masonry, concrete block			A	Y										

ALL DATA REPORT

**Client:** Hamilton-Wentworth Catholic District Sch  
**Location:** #214 : Classroom 12  
**Survey Date:** 2020-08-12

**Site:** Elementary  
**Floor:**

**Building Name:** Our Lady of the Assumption  
**Room #:**  
**Last Re-Assessment:** 2021-05-17

**Area (sqft):** 0

ASBESTOS																
System	Component	Material	Item	Covering	A*	V*	AP*	Good	Fair	Poor	Unit	Sample	Asbestos Type	Amount	Hazard	Friable
Ceiling		Masonry, concrete block			C	Y										
Floor		Vinyl Floor Tile and Mastic, 12x12 black dense fleck			A	Y						V9500	Presumed Asbestos		Presumed Asbestos	NF
Floor		Vinyl Floor Tile and Mastic, 12x12 beige with brown and white streak			A	Y						V9500	Presumed Asbestos		Presumed Asbestos	NF
Floor		Vinyl Floor Tile and Mastic, 12x12 grey with white and black fleck			A	Y						V9500	Presumed Asbestos		Presumed Asbestos	NF
Wall		Masonry, concrete block			A	Y										

**Client:** Hamilton-Wentworth Catholic District Sch  
**Location:** #215 : Supply Room  
**Survey Date:** 2020-08-12

**Site:** Elementary  
**Floor:**

**Building Name:** Our Lady of the Assumption  
**Room #:**  
**Last Re-Assessment:** 2021-05-17

**Area (sqft):** 0

ASBESTOS																
System	Component	Material	Item	Covering	A*	V*	AP*	Good	Fair	Poor	Unit	Sample	Asbestos Type	Amount	Hazard	Friable
Ceiling		Masonry, concrete block			C	Y										
Floor		Vinyl Floor Tile and Mastic, 12x12 cream with rose fleck			A	Y						V9500	Presumed Asbestos		Presumed Asbestos	NF
Piping		Parging Cement	Fitting		A	Y		6(5)			EA	V0006	Chrysotile	50-75%	Confirmed Asbestos	F
Wall		Masonry, concrete block			A	Y										

ALL DATA REPORT

**Client:** Hamilton-Wentworth Catholic District Sch  
**Location:** #216 : Classroom 13  
**Survey Date:** 2020-08-12

**Site:** Elementary  
**Floor:**

**Building Name:** Our Lady of the Assumption  
**Room #:**  
**Last Re-Assessment:** 2021-05-17

**Area (sqft):** 0

ASBESTOS																
System	Component	Material	Item	Covering	A*	V*	AP*	Good	Fair	Poor	Unit	Sample	Asbestos Type	Amount	Hazard	Friable
Ceiling		Masonry, concrete block			C	Y										
Floor		Vinyl Floor Tile and Mastic, 12x12 black dense fleck			A	Y						V9500	Presumed Asbestos		Presumed Asbestos	NF
Floor		Vinyl Floor Tile and Mastic, 12x12 beige with brown and white streak			A	Y						V9500	Presumed Asbestos		Presumed Asbestos	NF
Floor		Vinyl Floor Tile and Mastic, 12x12 grey with white and black fleck			A	Y						V9500	Presumed Asbestos		Presumed Asbestos	NF
Wall		Masonry, concrete block			A	Y										

**Client:** Hamilton-Wentworth Catholic District Sch  
**Location:** #217 : Stairwell  
**Survey Date:** 2020-08-12

**Site:** Elementary  
**Floor:**

**Building Name:** Our Lady of the Assumption  
**Room #:**  
**Last Re-Assessment:** 2021-05-17

**Area (sqft):** 0

ASBESTOS																
System	Component	Material	Item	Covering	A*	V*	AP*	Good	Fair	Poor	Unit	Sample	Asbestos Type	Amount	Hazard	Friable
Ceiling		Plaster			C	Y						V0007	Chrysotile	<0.5%	None	
Ceiling		Masonry, concrete block			C	Y										
Floor		Vinyl Floor Tile and Mastic, 9x9 tan with white streak			A	Y						V9500	Presumed Asbestos		Presumed Asbestos	NF
Floor		Vinyl Floor Tile and Mastic, 12x12 salmon			A	Y						V9500	Presumed Asbestos		Presumed Asbestos	NF
Floor		Terrazzo			A	Y										
Wall		Masonry, concrete block			A	Y										

# ALL DATA REPORT

**Client:** Hamilton-Wentworth Catholic District Sch  
**Location:** #218 : Stairwell  
**Survey Date:** 2020-08-12

**Site:** Elementary  
**Floor:**

**Building Name:** Our Lady of the Assumption  
**Room #:**  
**Last Re-Assessment:** 2021-05-17

**Area (sqft):** 0

ASBESTOS																
System	Component	Material	Item	Covering	A*	V*	AP*	Good	Fair	Poor	Unit	Sample	Asbestos Type	Amount	Hazard	Friable
Floor		Mastic		Vinyl Floor Tile	D	N						V9500	Presumed Asbestos		Presumed Asbestos	NF
Floor		Vinyl Floor Tile, 12x12 beige with dense fleck (installed 2014)			A	Y						V0000	Non-Asbestos		None	
Structure		Concrete (precast)			C	Y										
Wall		Masonry, Concrete block			A	Y										

## Legend:



Sample number		Units		Other	
S####	Asbestos sample collected	SF	Square feet	A	Access
V####	Material visually similar to numbered sample collected	LF	Linear feet	V	Visible
V0000	Known non-asbestos material	EA	Each	AP	Air Plenum
V9000	Visually identified as an asbestos material	%	Percentage	F	Friable material
V9500	Material is presumed to be an asbestos material			NF	Non Friable material
				PF	Potentially Friable material

Access	
A	Accessible to all building occupants
B	Accessible to maintenance and operations staff without a ladder
C	Accessible to maintenance and operations staff with a ladder. Also rarely entered, locked areas
D	Not normally accessible

Condition	
Good	No visible damage or deterioration
Fair	Minor, repairable damage, cracking, delamination or deterioration
Poor	Irreparable damage or deterioration with exposed and missing material

Visible	
Y	The material is visible when standing on the floor of the room, without the removal or opening of other building components (e.g. ceiling tiles or access panels).
N	The material is not visible to view when standing on the floor of the room and requires the removal of a building component (e.g. ceilings tiles or access panels) to view and access. Includes rarely entered crawlspaces, attic spaces, etc. Observations will be limited to the extent visible from the access points.

Air Plenum	
Yes or No	The material is in a return air plenum or in a direct airstream or there is evidence of air erosion (e.g. duct for heating or cooling blowing directly on or across an ACM). This field is only completed where Air Plenum consideration is required by regulation.

Colour Coding	
	The material is known to contain regulated concentrations of asbestos; either by analytical results or visible identification (use of the V9000 code).
	The material is presumed to contain asbestos; based on visual appearances; typically a material known to historically contain asbestos; however, not sampled due to limited access or the destructive nature of the sampling.

Action					
(1)	Clean up of ACM Debris	(2)	Precautions for Access Which may Disturb ACM Debris	(3)	ACM removal
(4)	Precautions for Work Which may Disturb ACM in Poor Condition	(5)	Proactive ACM removal (Minimum repair required for fair condition)	(6)	ACM repair
(7)	Management program and surveillance				

**APPENDIX V**  
**Drawings**



NOT ALL KNOWN OR SUSPECTED ASBESTOS BUILDING MATERIALS MAY BE DEPICTED ON THE DRAWING. REFER TO THE ASBESTOS REASSESSMENT REPORT FOR A COMPLETE LIST OF KNOWN AND SUSPECTED ASBESTOS BUILDING MATERIALS.

LEGEND IS COLOUR DEPENDENT. NON-COLOUR COPIES MAY ALTER INTERPRETATION.

BASE PLAN PROVIDED BY CLIENT.



905-577-6206      www.pinchin.com

LEGEND:

- (X) LOCATION NUMBER
- ⊙ ASBESTOS BULK SAMPLE

ASBESTOS-CONTAINING MATERIALS:

- P** PIPE INSULATION
- S** SINK UNDERCOATING
- PHS** PAPER HEAT SHIELD
- ACOUSTIC CEILING TILES
- VINYL FLOOR TILES & MASTIC
- MASTIC

FOR CLARITY, THE FOLLOWING ASBESTOS-CONTAINING MATERIALS ARE PRESENT BUT NOT DEPICTED ON THE DRAWINGS

- DRYWALL JOINT COMPOUND

CLIENT:



Hamilton-Wentworth  
Catholic District School Board  
*Believing. Achieving. Serving*

LOCATION:

OUR LADY OF THE ASSUMPTION  
55 HIGHWAY 20 SOUTH  
STONE CREEK, ONTARIO

TITLE:

ASBESTOS ASSESSMENT  
GROUND FLOOR

DATE:

AUGUST 2022

PROJECT # :

303992.004

DRAWN BY:

EB

CHECKED BY:

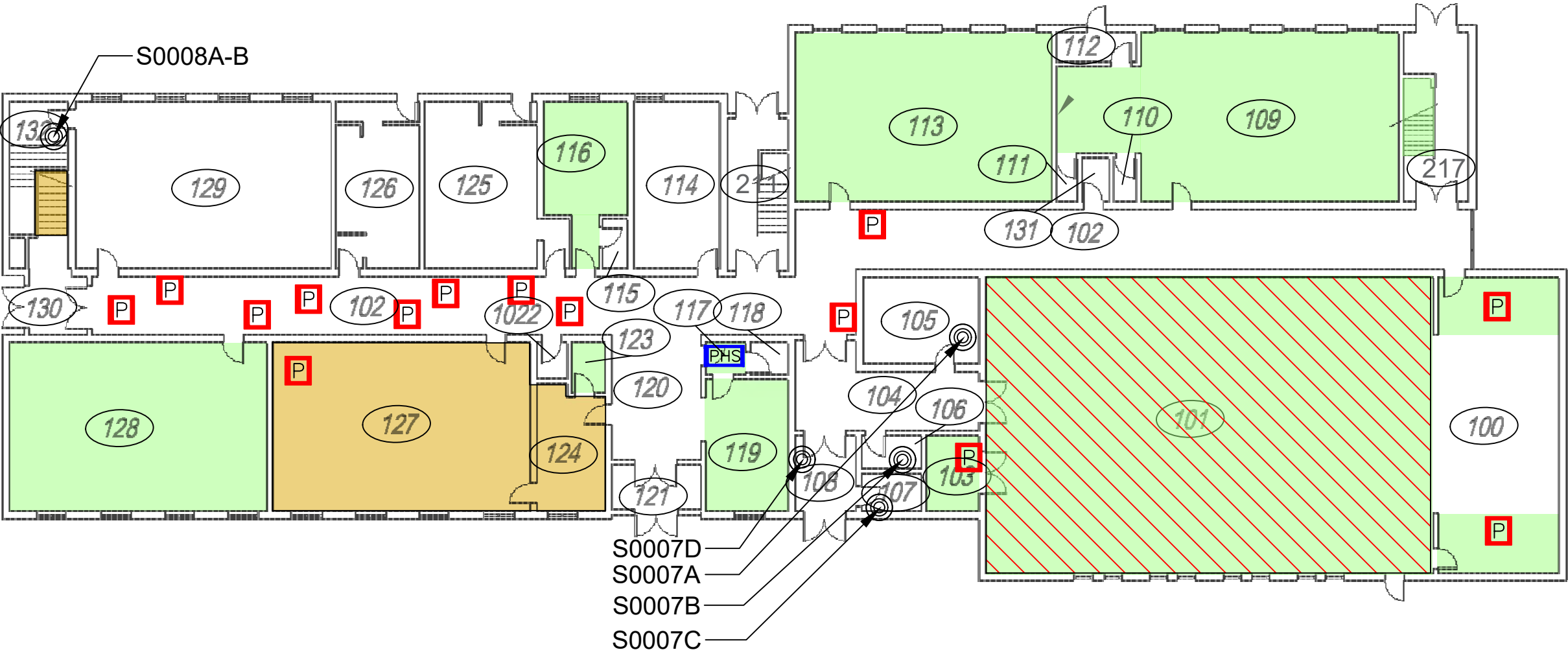
EB

SCALE:

NTS

DRAWING:

1 OF 2



BASE PLAN PROVIDED BY CLIENT.



www.pinchin.com

(X) LOCATION NUMBER

 ASBESTOS BULK SAMPLE

**P** PIPE INSULATION

**S** SINK UNDERCOATING

**PHS** PAPER HEAT SHIELD

 ACOUSTIC CEILING TILES

 VINYL FLOOR TILES & MASTIC

MASTIC

FOR CLARITY, THE FOLLOWING  
ASBESTOS-CONTAINING MATERIALS ARE  
PRESENT BUT NOT DEPICTED ON THE  
DRAWINGS

- DRYWALL JOINT COMPOUND

*Believing, Achieving, Serving*

OUR LADY OF THE ASSUMPTION  
55 HIGHWAY 20 SOUTH  
STONEY CREEK, ONTARIO

ASBESTOS ASSESSMENT  
SECOND FLOOR

PROJECT #:	303992.004
------------	------------

EB

EB

SCALE: NTS

2 OF 2

